



# SMART METERING

IoT sensor



## Features

The MR1 is the basic single input version of the ACW Metering range, it allows the remote reading of a pulse output meter or the reporting of the status of a dry contact.

The input can be configured alternatively in counting or Boolean state. The cycle time is adjustable from 5min to 24h.

The information collected is regularly transmitted via the Sigfox or LoRaWAN networks or locally by installing one or more gateways on the site.

On this simplified version, all the settings are done remotely from the network, by downlink messages.

### SEE ALSO

ACW/MR4 : 4 inputs ToR / Counting version

ACW/MR2-Ex : Atex zone 2 version



1 digital or pulse metering input



IP65 protection rating



1 transmission of pulse metering consumption per hour  
Sigfox 4+ years\*  
LoRa 10+ years\*



Interchangeable batteries



Setup via Downlink



Plug & Play



Accessories in option: light guide for LED meters or industrial magnetic sensors

## References

Part number	Technology	
ACW/MR1	Sigfox	LoRaWAN

## Options

LED head for electric meters	Opening /closing doors magnetic head
CAPT-OPTO	CAPT-DOCK

\* Subjected to the environment conditions

# ENERGY AND SECURITY MANAGEMENT WITHIN A BUILDING



Smart Building



Smart City

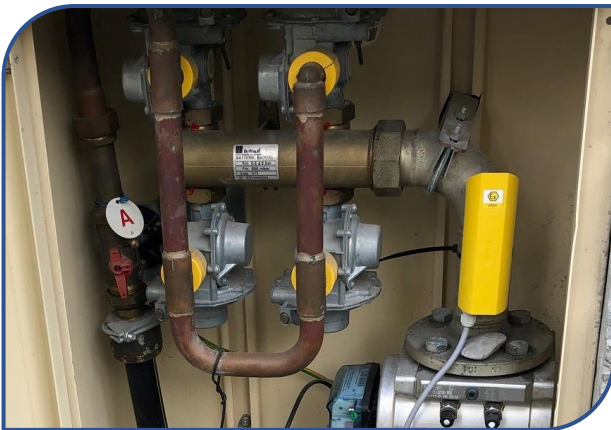


Smart Industry



Utilities

- Monitor the consumption index of your electricity or water meters in real time.
- Analyse data and detect peaks in consumption.
- Identify the most energy-intensive workstations or sectors and develop an appropriate action plan to reduce consumption.
- Identify water leaks with an alert in the event of abnormal consumption.



- Monitor the consumption index of your gas meters in real time.
- Quickly identify a gas leak in the event of unusual consumption.
- React quickly to avoid the risks associated with this leak.

- Connect the opening and closing system of a secured door to monitor a limited access site such as a warehouse.
- Detect an intrusion or an opening outside of common time slots.

