



# Dual Gas Transmitter E2660-CO-NO2



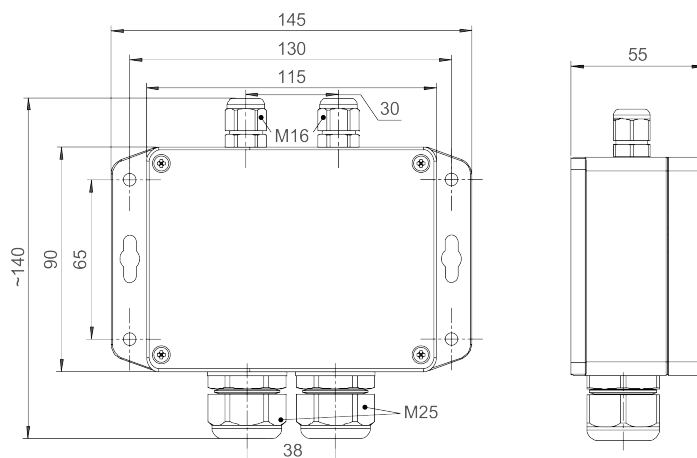
## Features

- CO and NO<sub>2</sub> monitoring in underground garages
- Two analog outputs 4-20 mA and 0-10 V
- RS485 Modbus RTU digital interface
- Wall mount IP65 protected housing
- Attached or remote sensor

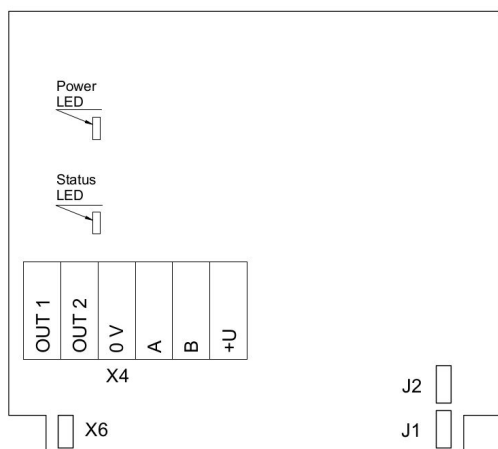
## Specifications

	CO	NO <sub>2</sub>
Sensor type	Electrochemical	Electrochemical
Sampling method	Diffusion	Diffusion
Detection ranges	0...300 ppm, 0...1000 ppm (option) CO	0...20 ppm, 0...200 ppm NO <sub>2</sub>
Max. overload	2000 ppm	100 ppm 1000 ppm
Resolution	1 ppm	0.1 ppm 1 ppm
Response time T90	ca. 30 s	< 60 s <40 s
Maintenance interval	6 months	6 months
Sensor lifetime	> 6 years	> 2 years
Signal update	Every 1 second	
Self-diagnostics	Full functionality check at start-up	
Warm-up time	≤ 1 min	
Power supply	11...30 VDC (default), 24 VAC or 90...265 VAC	
Power consumption	< 2 VA	
Digital interface	RS485, Modbus RTU protocol	
Analog outputs	2 × 4-20 mA / 0-10 V, user settable	
Output scale width	Recommended: 20-100% of the range; > 10 × resolution in any case	
Enclosure	Light grey ABS plastic, wall mount, protection class IP65	
Dimensions	H90 × W145 × D55 mm	
Sensor heads	M25	
Remote sensor probe	Protection IP65, shielded cable default cable length 3.0 m	
Operating conditions	Explosion-safe areas; Non-aggressive atmosphere without condensation; 0,9...1,1 atm; -20...+50 °C, 0...85 %RH <b>NOTE!</b> we offer technical solutions for extreme humidity, please contact us for details.	

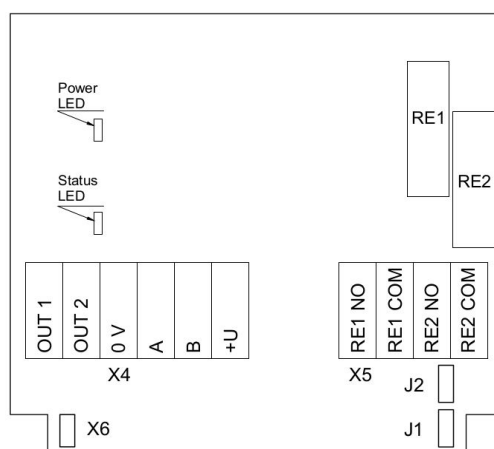
## Dimensions



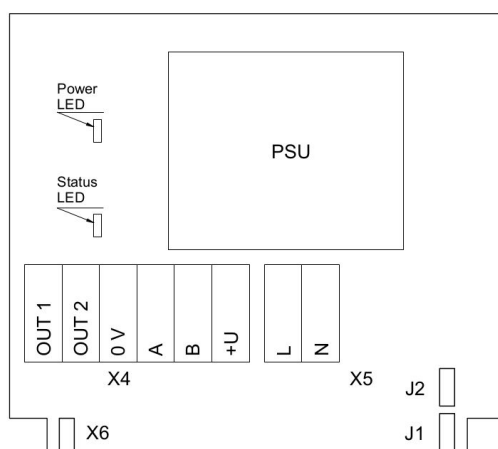
## Connection diagram



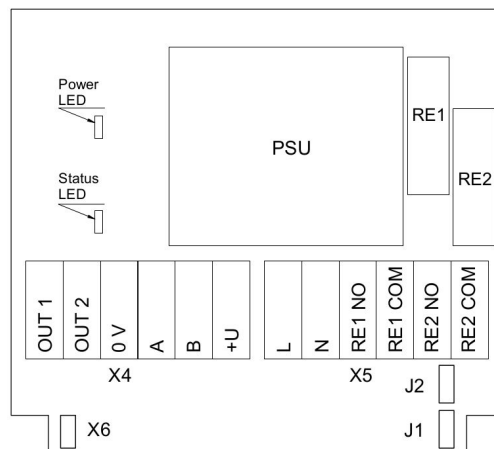
Version without PSU and relays



Version without PSU and with relays

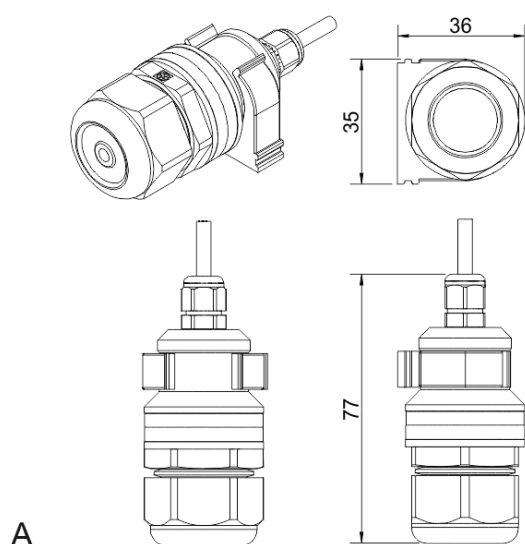


Version with PSU and without relays



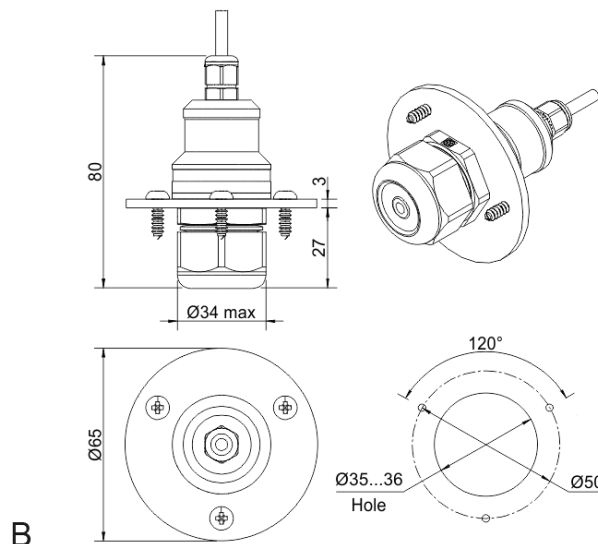
Version with PSU and relays

## Remote probe



A

Wall mount remote probe with fixing clamp (default version)



B

Remote probe with rubber flange and three self-tapping screws (on request)

