

UPLOAD DATA VIA WIFI WITHOUT COMPUTER



LTI-WIFI

Desktop WiFi Interface Cradle

LogTag Recorders



The LogTag LTI-WiFi wireless interface is a high-speed 802.11/b/g/n compatible device that connects to your WiFi network.

The LogTag® LTI-WiFi interface cradle allows download of standard LogTag loggers with 3 silver contact pins and uploads data to LogTag Online, LogTag's secure cloud server.

*TRED30-16R and external probe in the image sold separately

Features



Connects to LogTag Online, a cloud server solution for viewing, analyzing and storing data.



Easily set up to work with your WiFi network.



Buffers up to 48 full memory logger downloads during loss of network connectivity.



Uploaded data is immediately available for viewing in LogTag Online.



Downloaded data is fully encrypted and automatically uploaded to a secure LogTag cloud server.



Inbuilt LED indicators show data download and network access status.

Applications



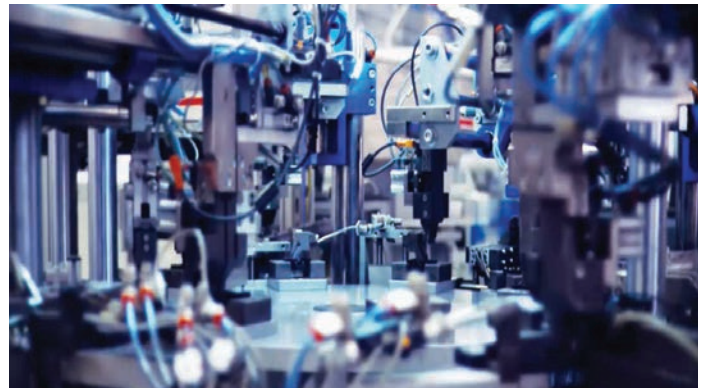
Healthcare



Clinic



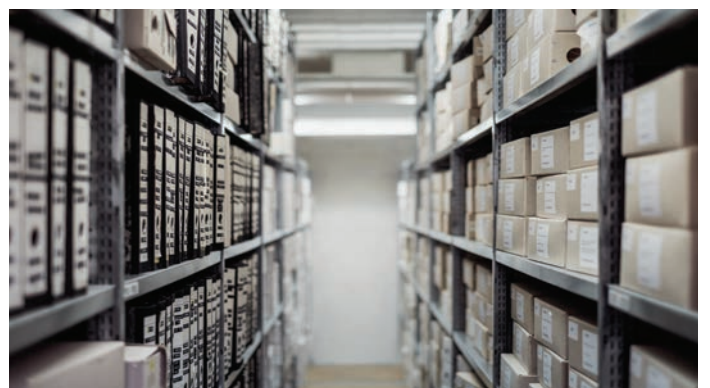
Transportation



Industrial



Chemicals



Indoor Spaces

Specifications

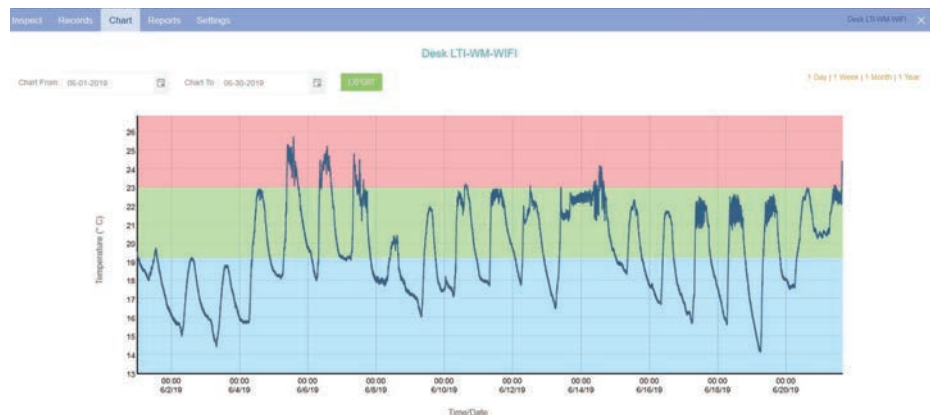
Product Model	LTI-WIFI
Operating Temperature Range	0°C to +40°C
Storage Temperature Range	-40°C to +70°C
USB Standard	2.0
Logger buffer	Up to 48 logger downloads can be buffered
Wireless Standard	2.4GHz 802.11 b/g/n. High sensitivity internal antenna
Network Security	WPA/WPA2-PSK
Environmental	IP50 (Rated for indoor use only)
Software Compatibility	LTA 2.9r2, LTA 3.0r8, LTX 1.1r1 LogTag Online
Indicators	Green 'Activity' LED. Red 'Busy/Error' LED. Blue/Red dual colour 'Network Activity' LED
Power Source	5V/5W (Computer, power bank or USB wall charger)
Size	45mm(h) x 85mm(W) x 71mm(D), excluding cable
Weight	74g, excluding cable
Case Material	Polycarbonate, ABS
Connection	USB Micro
Range (Clear Line of Sight)	40m
Accessories	2.0m USB Cable



Connection Software

Data automatically uploaded via WiFi to the LogTag Online cloud.

For more information on LogTag Online, please visit our website:



www.logtag-recorders.com/en/software