



## EnGenius Cloud-managed VPN Firewall

Higher efficiency, enhanced security, and unified Cloud management

The EnGenius Cloud-managed VPN Firewall Series delivers more simplicity and security to business networks by providing the IT team with an effortless setup, enterprise-level security, and an end-to-end Cloud-managed network solution. The Cloud-managed VPN Firewall are the crucial first line of defense—improving network traffic flow while offering an extra layer of network protection and can be cloud-managed from anywhere.

**Auto VPN for Site-to-site and Client** - The VPN connection can be activated in a few clicks without configuration hassle for site-to-site or client. The AUTO VPN will update related VPN information to all peers for continuous VPN connection if the WAN IP/Ports are changed due to ISP or Router configuration.

**Dual WAN Ports for Load Balance and Failover** - The dual-ports for both WAN and LAN ensure a smooth and reliable connection for external and in-line networking without any bottleneck. The dual WAN ports can be used for load balancing or failover, and the USB interface for mobile wireless dongles is designed to seamlessly back up when both WANs fail.

**High-Throughput Stateful Firewall** - The firewall feature of Cloud-managed VPN Firewall offers protection against network threats by enforcing company security policies and filtering malicious internet traffic in real-time while delivering a significantly high throughput.

**Integrated and Easy Management with Cloud** - The Cloud-managed VPN Firewall allow users to set up quickly and manage their entire network from anywhere using a central cloud interface or mobile app. The end-to-end solution will also offer core functionalities through a cloud-based network security system that allows customers greater visibility across its line of access points, PoE switches, and a fully operative security gateway.

### Features & Benefits

- Auto-VPN and NAT traversal
- Network topology and VPN status
- Site-to-site VPN and client VPN
- Stateful firewall and firewall policy applies to all
- Dual-Wan load balance and failover
- Touchless system maintenance and automatic updates
- Multi-mode passthrough and routing options
- Unified with EnGenius Cloud management
- Management on the go with Cloud To-Go



ESG320



ESG510



ESG610

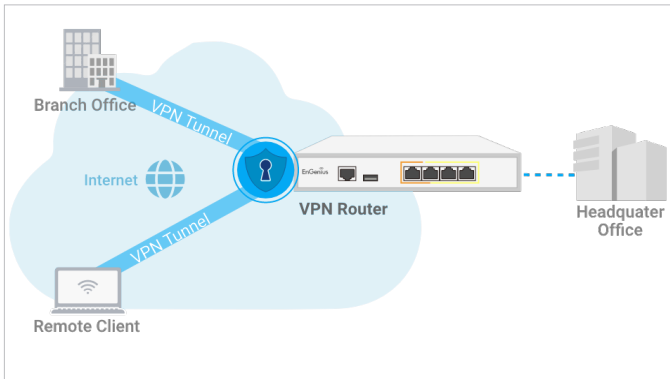


ESG620

## Benefits for Your Business

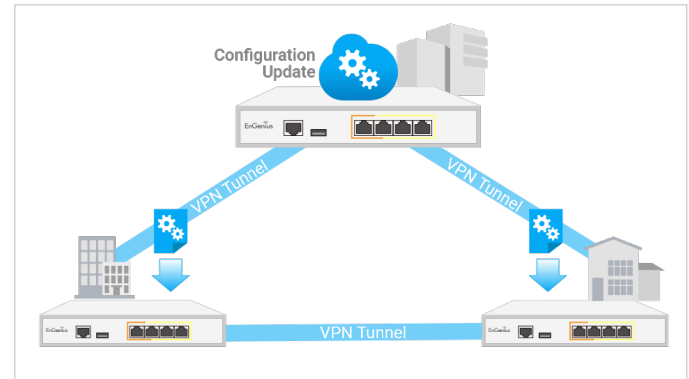
### Easy setup and Secure SD-WAN connections for Branch Sites

Streamline your remote work and communication with site-to-site and client VPN. Forget the complexity of traditional VPN configurations and embrace effortless, secure, and private connections for your business.



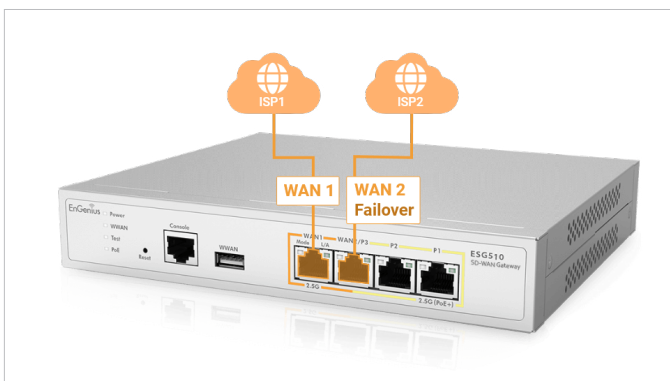
### Effortlessly Maintain Network Connections with Self-healing Auto VPN

EnGenius Cloud automatically updates related VPN parameters to all peers, ensuring a seamless and secure connection even in case of WAN IP address reassignment or forwarding port changes.



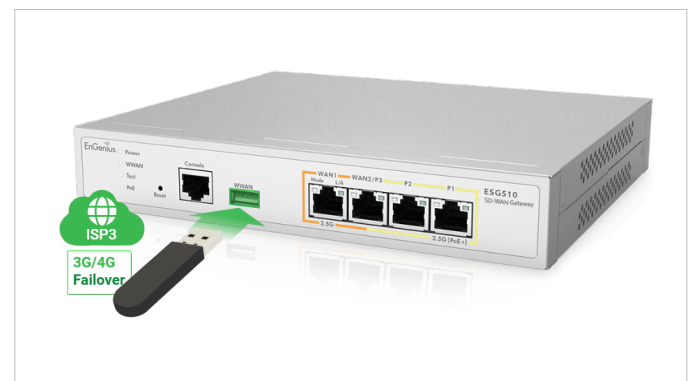
### Achieve Flexible Connectivity through Dual WAN Ports Integration

The Cloud-managed VPN Firewall is capable of highly efficient load-balancing and redundancy, optimizing traffic by utilizing all available paths among multiple sites.



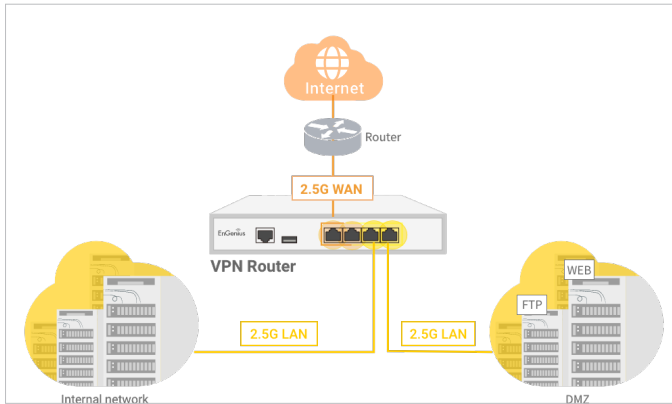
### Uninterrupted Internet Connection with Cellular Failover

The advanced cellular WAN failover automatically switches to a redundant connection in case of interruption on all your WAN ports.



## Achieve exceptional performance with 2.5 Gigabit WAN and LAN

EnGenius Cloud-managed VPN Firewall boosts four powerful 2.5G ports for your networks, is ideally suited for high-speed WAN environments, and offers in-line architecture design for seamless 2.5G uplink to your existing router.



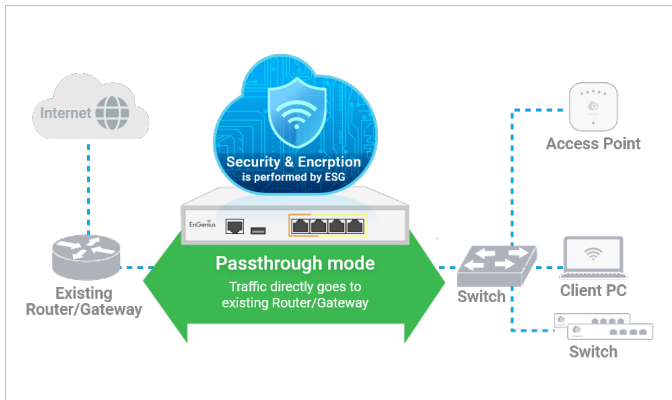
## Protect Networks with High-throughput Stateful Firewall

Safeguard your business from potential threats and attacks with the stateful firewall that integrates robust corporate security policies and real-time filtering of malicious internet traffic, all while maintaining optimal network performance.



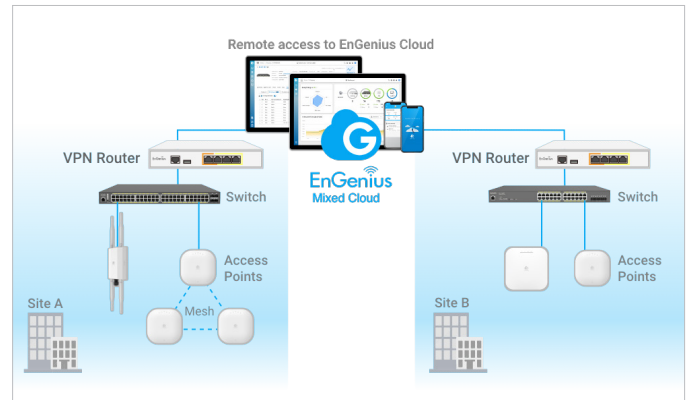
## Passthrough Mode for Existing Network Gateway or Router

Maintain current routing settings and enhance security and monitoring capabilities with EnGenius Cloud-managed VPN Firewall's 'Passthrough' mode, seamlessly integrating with existing routers or gateways without disrupting your network configurations.



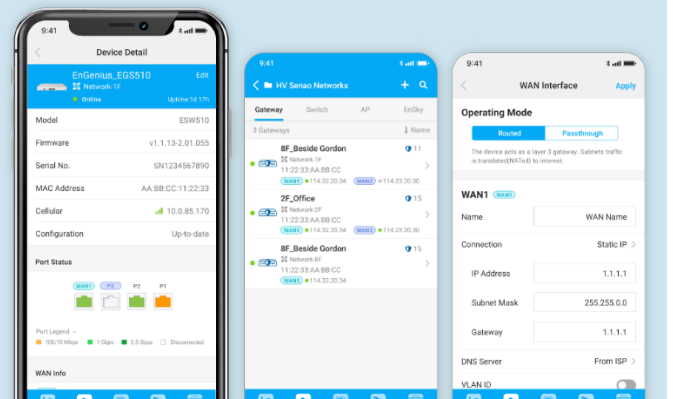
## Unified Cloud-Management Integrating with APs and Switches

Experience effortless network management with EnGenius Cloud-managed and unified integration with Cloud-managed VPN Firewalls, APs, and switches. Monitor and control all your network devices with ease through a centralized, user-friendly interface.







## Remotely Manage VPN Firewall On-the-Go

Easily take control of your network from anywhere, anytime, with EnGenius Cloud-managed VPN Firewall. Seamless setup and centralized management of your networks with the Cloud To-Go mobile app.



## EnGenius Cloud-managed VPN Firewall

Cloud-managed VPN Firewall				
				
Model Name	Gateway3 4G 1SFP	Gateway5 4mG	Gateway6 4mG	Gateway6 8mG 2SFP+
Model Number	ESG320	ESG510	ESG610	ESG620
Processor	Dual Core	Quad Core	Quad Core	Quad Core
Operating Frequency	2.1GHz	1.6GHz	2.2GHz	2.2GHz
Memory	4GB	4GB	8GB	8GB
Flash	8GB	8GB	8GB	16GB
RJ-45 Interface	4x1G	4x 2.5G	4x 2.5G	8x 2.5G
SFP interface	1xSFP	-	-	2x SFP+
PoE ports	1	1	1	4
PoE Standard	802.3 af/at	802.3 af/at	802.3 af/at	802.3 af/at
I/O Interfaces	1 x RJ-45 console/1 x USB 3.0	1 x RJ-45 console/1 x USB 3.0	1 x RJ-45 console/1 x USB 3.0	1 x RJ-45 console/1 x USB 3.0
Mounting Method	Wall mount	Wall mount	Wall mount	Rack mount
Security	TPM	TPM	TPM	TPM
Firewall (SPI throughput)	3G(*)	4G(*)	6.8G(*)	7.7G(*)
VPN throughput	900M(*)	970M(*)	1.5G(*)	1.5G(*)
Max. Concurrent VPN Tunnels	100(*)	200(*)	300(*)	300(*)
Max. Concurrent VPN Users	50(*)	250(*)	380(*)	380(*)
Max. TCP Concurrent Sessions	1,000,000	1,000,000	1,250,000	1,250,000
Max VLAN	16(*)	96(*)	160(*)	160(*)
Power	54V/1.2A	54V/1.2A	54V/1.2A	internal 300w power
Dimensions	210 x 179.5 x 35 mm	210 x 179.5 x 35 mm	210 x 179.5 x 35 mm	330 x 230 x 44 mm

\*Note : The performance no are estimated number for reference only.

Technical Specifications

CPU Processor
ESG320
Dual Core
ESG510/ESG610/ESG620
Quad Core
Operating Frequency
ESG320
2.1GHz
ESG510
1.6GHz
ESG610/ESG620
2.2GHz
Memory
ESG320/ESG510
4GB
ESG610/ESG620
8GB
Flash Storage
ESG320/ESG510/ESG610
8GB
ESG620
16GB
RJ-45 Interface
ESG320
4 x 1G
ESG510/ESG610
4 x 2.5G
ESG620
8 x 2.5G
SFP interface
ESG320
1 x SFP
ESG510/ESG610
-
ESG620
2 x SFP+
PoE Ports
ESG320/ESG510/ESG610
1
ESG620
4
PoE Standard
ESG320/ESG510/ESG610/ESG620
802.3 af/at
I/O Interfaces

ESG320/ESG510/ESG610/ESG620
1 x RJ-45 console/1 x USB 3.0
Mounting Method
ESG320/ESG510/ESG610
Wall mount
ESG620
Rack mount
Security
ESG320/ESG510/ESG610/ESG620
TPM

Perfomance & Capacity

Firewall (SPI throughput)
ESG320
3 Gbps
ESG510
4G
ESG610
6.8G
ESG620
7.7G
VPN Throughput
ESG320
900M
ESG510
970M
ESG610/ESG620
1.5G
Max. Concurrent VPN Tunnels
ESG320
100
ESG510
200
ESG610/ESG620
300
Max. Concurrent VPN Users
ESG320
50
ESG510
250
ESG610/ESG620
380
Max. TCP Concurrent Sessions
ESG320/ESG510
1,000,000

<b>ESG610/ESG620</b>
1,250,000
<b>Max VLAN</b>
<b>ESG320</b>
16
<b>ESG510</b>
96
<b>ESG610/ESG620</b>
160

## Firewall

<b>Firewall Features</b>
<b>ESG320/ESG510/ESG610/ESG620</b>
Stateful Packet Inspection
Policy Rules
Port Forwarding
1:1 NAT
Allow Inbound Services
Layer 7 Application Firewall

## VPN

<b>Site-to-Site VPN</b>
<b>ESG320/ESG510/ESG610/ESG620</b>
Mesh VPN/ Hub-and-Spoke
<b>Encryption</b>
<b>ESG320/ESG510/ESG610/ESG620</b>
3DES, AES (256/192/128-bit)
<b>Authentication</b>
<b>ESG320/ESG510/ESG610/ESG620</b>
MD5, SHA1, SHA2 (256-bit)
<b>Key Management</b>
<b>ESG320/ESG510/ESG610/ESG620</b>
IKEv1 (x-auth, mode-config)
IKEv2 (EAP, configuration payload)
<b>VPN Features</b>
<b>ESG320/ESG510/ESG610/ESG620</b>
Site-to-Site VPN
Client VPN(IPsec/SecuPoint SSL)
Policy-based VPN
IPSec NAT traversal (NAT-T)
Dead Peer Detection (DPD)
Auto-VPN Connection
Auto NAT traversal

## Networking

<b>Operation Mode</b>
<b>ESG320/ESG510/ESG610/ESG620</b>
Routed/Passthrough
<b>Multiple WANs</b>
<b>ESG320/ESG510/ESG610/ESG620</b>
Dual
<b>Bandwidth Limit</b>
<b>ESG320/ESG510/ESG610/ESG620</b>
Per client/Per Interface
<b>Traffic Load Balancing</b>
<b>ESG320/ESG510/ESG610/ESG620</b>
WAN load balancing with WRR
<b>Networking Features</b>
<b>ESG320/ESG510/ESG610/ESG620</b>
Static Route
Multiple WANs
USB Cellular
User Authentication
PPPoE
VLAN Tagging
Captive Portal
Custom Splash Page
Bandwidth Limit
Traffic Load Balancing
DHCP client/server/relay
Dynamic DNS support
Policy Based Routing

## Environmental & Physical

<b>Power</b>
<b>ESG320/ESG510/ESG610</b>
54V/1.2A
<b>ESG620</b>
internal 300w power
<b>Operation Temperature</b>
<b>ESG320/ESG510/ESG610/ESG620</b>
0°C to 40°C
<b>Humidity (non-condensing)</b>
<b>ESG320/ESG510/ESG610/ESG620</b>
5 to 95% non-condensing

## Dimensions & Weight

### Dimensions

#### ESG320/ESG510/ESG610

210 x 179.5 x 35 mm

#### ESG620

330 x 230 x 44 mm

### Package Contents

#### ESG320/ESG510/ESG610

Power adapter

Power cord

RJ-45 Console Cable

Wall Mount Kit

Product Card

#### ESG620

Power cord

RJ-45 Console Cable

Rack Mount Kit

Product Card

## Compliance & Warranty

### Regulatory Compliance

#### ESG320/ESG510/ESG610/ESG620

FCC Part 15 (Class B)

IC

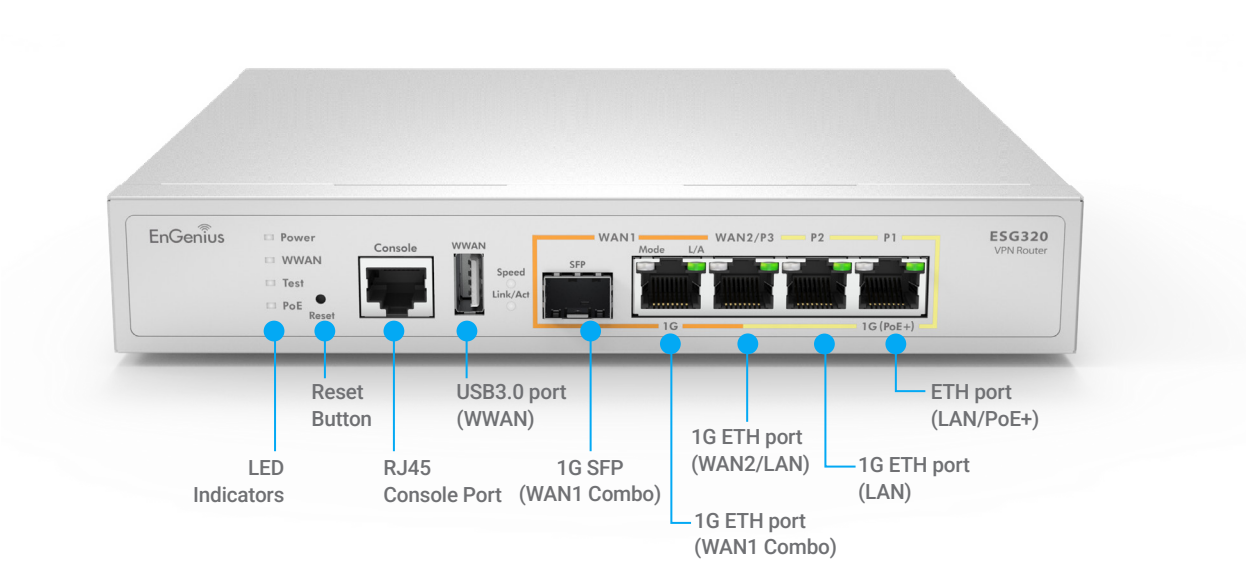
CE EMC

CB

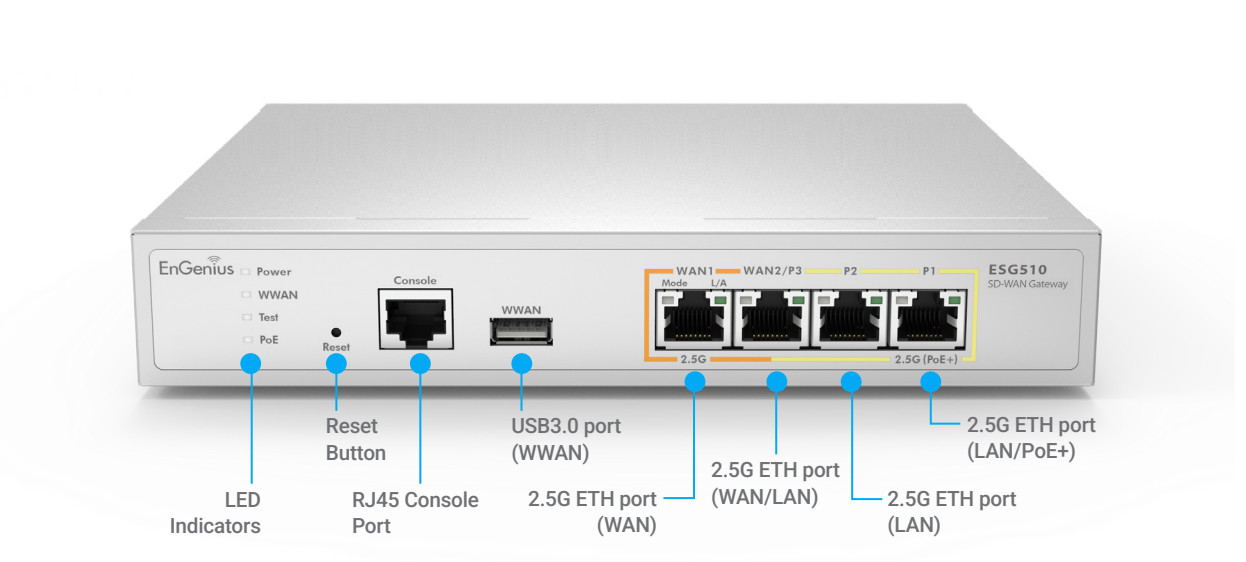
UL

Maximum data rates are based on IEEE 802.11 standards. Actual throughput and range may vary depending on distance between devices or traffic and bandwidth load in the network.

ESG320 Hardware Overview

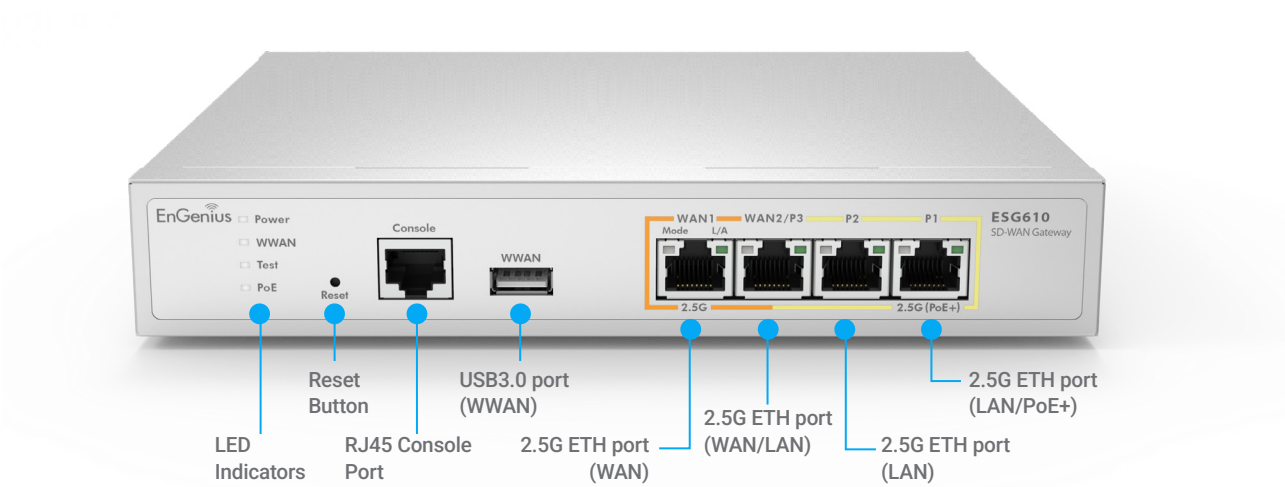


ESG510 Hardware Overview

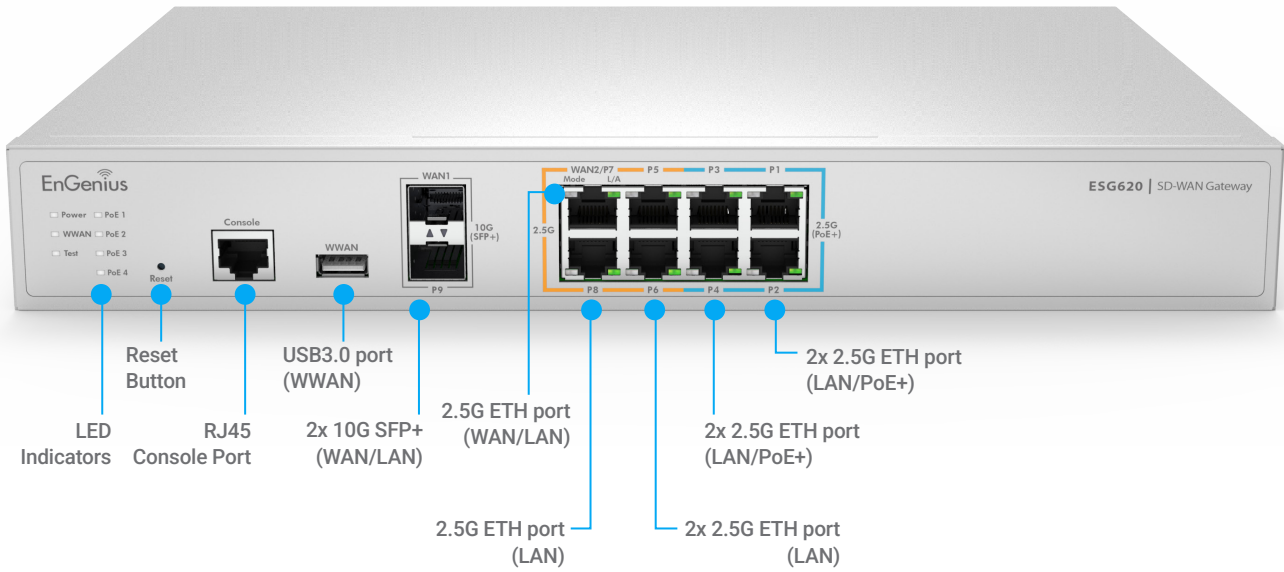




ESG610 Hardware Overview



ESG620 Hardware Overview



## Plug & Play with Zero Configuration



EnGenius Networks Japan 株式会社 | Tokyo, Japan

Email: [jp.support@engeniustech.com](mailto:jp.support@engeniustech.com)  
Website: [www.engeniustech.com/jp](http://www.engeniustech.com/jp)  
Local contact: (+81) 3 6809 6608

EnGenius Networks Europe B.V. | Eindhoven, Netherlands

Email: [support@engeniustech.com](mailto:support@engeniustech.com)  
Website: [www.engeniustech.com/eu](http://www.engeniustech.com/eu)  
Local contact: (+31) 40 8200 887

恩碩科技股份有限公司 | Taiwan, R.O.C.

Email: [sales@engeniustech.com.tw](mailto:sales@engeniustech.com.tw)  
Website: [www.engeniustech.com/tw](http://www.engeniustech.com/tw)  
Local contact: (+886) 933 250 628

EnGenius Technologies | Costa Mesa, California, USA

Email: [support@engeniustech.com](mailto:support@engeniustech.com)  
Website: [www.engeniustech.com](http://www.engeniustech.com)  
Local contact: (+1) 714 432 8668

EnGenius Networks Singapore Pte Ltd. | Singapore

Email: [techsupport-sg@engeniustech.com](mailto:techsupport-sg@engeniustech.com)  
Website: [www.engeniustech.com/apac](http://www.engeniustech.com/apac)  
Local contact: (+65) 6227 1088

EnGenius Technologies Canada | Ontario, Canada

Email: [support@engeniustech.com](mailto:support@engeniustech.com)  
Website: [www.engeniustech.com](http://www.engeniustech.com)  
Local contact: (+1) 905 940 8181

EnGenius Networks Dubai | Dubai, UAE

Email: [support-me@engeniustech.com](mailto:support-me@engeniustech.com)  
Website: [www.engeniustech.com/apac](http://www.engeniustech.com/apac)  
Local contact: (+971) 4 339 1227