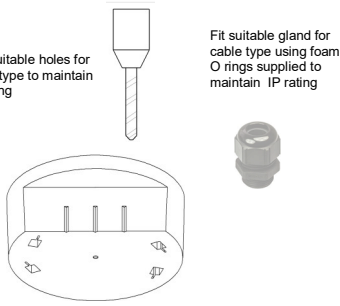


NS100, NSF100 & ENB100 Installation

1.

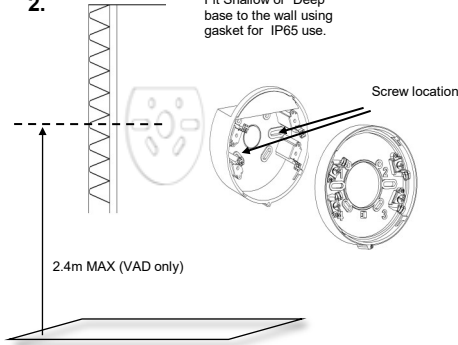
Drill suitable holes for gland type to maintain IP rating



Fit suitable gland for cable type using foam O rings supplied to maintain IP rating

2.

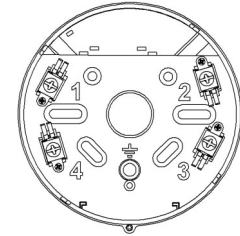
Fit Shallow or Deep base to the wall using gasket for IP65 use.



2.4m MAX (VAD only)

Wiring connections

3.

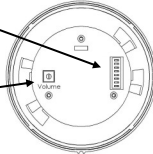


Terminal No.	NS100 & NSF100	ENB100
1	+ve IN	+ve IN
2	-ve IN / OUT	-ve IN / OUT
3	2nd Tone -ve IN/OUT	N/A
4	+ve OUT	+ve OUT

4.

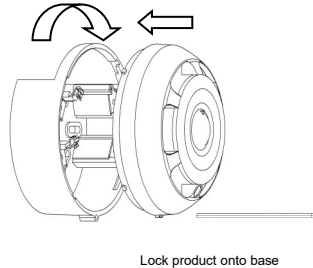
Set operating mode switches

Leave Volume control on MAX volume for EN54 specification.



5.

Fit product to base



Lock product onto base

SPECIFICATION

Switch Number	Description	Default settings NS100	Default settings NSF100	Default settings ENB100
1	Flash select	N/A	OFF	OFF
2	Flash select	N/A	ON	ON
3	Flash select	N/A	ON	ON
4	Tone selection	OFF	OFF	N/A
5	Tone selection	ON	ON	N/A
6	Tone selection	OFF	OFF	N/A
7	Tone selection	OFF	OFF	N/A
8	Tone selection	OFF	OFF	N/A

	Specification	Max rating/ peak
Supply voltage	Nominal range 18V to 56V DC (12 to 18V reduced output)	56V DC
VAD Current consumption	13mA to 28mA setting dependant	28mA @ 24Vdc
Sounder Current consumption	Average 14mA : 8mA to 30mA depending on tone	25mA @24Vdc
Max Power	NS100 (0.45W@24Vdc typical) NSF100 (1.2W@24Vdc typical) ENB100 (0.45W@24Vdc typical)	1.2W 2.4W 1.2W
Protection	Reverse polarity protected on Alarm and Pre-alarm channels	
Monitoring	Use reverse polarity and End of line device	
Temperature range	-25 to +70	
Material	V0 ABS / PC	
Category / IP rating	Type B (IP65 deep base) (IP33C shallow base)	IP65

Maintenance: No regular maintenance required but checking for damage or obstructions is recommended periodically.

Flash selection

Switch Number	Function	NSF100 Combined sounder / VAD EN54-23 code / coverage volume				ENB100 VAD EN54-23 code / coverage volume			
		WHITE flash	RED flash	mA @ 24V	mA @ 48V	WHITE flash	RED flash	mA @ 24V	mA @ 48V
0 0 0	1s Low power	W-2.4-5.6/75m ³	W-2.4-5/60m ³	18mA	13mA	W-2.4-6/86m ³	W-2.4-5/60m ³	18mA	13mA
0 0 1	1s High power	W-2.4-7.6/138m ³	W-2.4-6.5/101m ³	30mA	19mA	W-2.4-7.6/138m ³	W-2.4-6.2/92m ³	30mA	19mA
0 1 0	2s Low power	W-2.4-5.6/75m ³	W-2.4-5/60m ³	12mA	11mA	W-2.4-6/86m ³	W-2.4-5/60m ³	12mA	11mA
0 1 1	2s High power	W-2.4-7.6/138m ³	W-2.4-6.5/101m ³	19mA	13mA	W-2.4-7.6/138m ³	W-2.4-6.2/92m ³	19mA	13mA

Tone selection (For sound output polar plot data see Data sheet DS45-0010 A)

Tone Number	Tone description	Switch number	Typical SPL @ 1m	EN54 -3 SPL	2 nd tone
1	800 & 1000Hz, Alternating (250ms – 250ms)	00000	103		21
2	660Hz, Intermittent (1.8s ON – 1.8s OFF)	00001	103		2
3	2400 & 2900Hz, Alternating (250ms – 250ms)	00010	110		22
4	1000Hz Intermittent (0.5s ON, 0.5s OFF X3, 1s OFF) ISO 8201	00011	100		18
5	2400 – 2900Hz Sweep, (7Hz)	00100	110		22
6	660Hz, Intermittent (0.5s ON – 0.5s OFF)	00101	103	103	None
7	1000Hz Intermittent (0.25s ON, 1s OFF)	00110	100		21
8	800 - 1000Hz, Sweep, (1Hz)	01000	103	103	21
9	660Hz, Continuous	01001	103		9
10	800 & 1000Hz, Alternating (0.5s – 0.5s)	01010	103		21
11	1400 – 2000Hz, Sweep (10Hz)	01011	102		11
12	500 -1200Hz, Sweep, (3.5s ON -0.5s OFF)	01100	103	103	21
13	800 - 1000Hz, Buzz (Sweep at 50Hz)	01101	100		21
14	440Hz (100ms) and 554Hz (400ms), Alternating	01110	103		21
15	800 – 1000Hz, Fast Sweep, (7Hz)	10000	103		21
16	660Hz, Intermittent (6.5s ON – 13s OFF)	10001	103		16
17	1000Hz, Intermittent (1s ON – 1s OFF)	10010	100		21
18	2900Hz Intermittent (0.5s ON, 0.5s OFF X3, 1s OFF) ISO 8201	10011	106		4
19	2400 – 2900Hz, Sweep, (1Hz)	10100	108		22
20	2900Hz Intermittent (150ms ON, 100ms OFF)	10101	104		21
21	1000Hz, Continuous	10110	100		21
22	2900Hz, Continuous	11000	105		21
23	NO SOUND OUTPUT – MUTE OPTION	11001	0		1
24	2900Hz, Intermittent (1s ON – 1s OFF)	11010	105		22
25	800 & 1000Hz, Alternating (0.5s – 0.5s)	11011	103		22
26	1200 - 500Hz, Sweep, (1Hz), DIN tone	11100	103		21
27	2400 – 2900Hz, Buzz (Sweep at 50Hz)	11101	108		22
28	660Hz, Intermittent (150ms ON – 150ms OFF)	11110	103		28
29	990 - 660Hz, Alternating (0.5s - 0.5s)	00111	101		6
30	910 - 685Hz, Alternating (250ms - 250ms)	01111	100		6
31	750 - 1000Hz, Alternating (0.5s - 0.5s)	10111	98		17
32	925 - 628Hz, Alternating (250ms - 250ms)	11111	100		6

NS100 / NSF100 / ENB100 range – LED VAD's and Sounders



D.o.P. number: 0010

EN54-3: 2011 - Type A & B Fire alarm Sounder

EN54-23: 2010 – Type A & B Fire alarm VAD

For use with Alarm systems including Fire alarm systems

Supply Voltage: 18 to 56 V d.c.

Alarm Current: 8mA to 50mA (depending on model and settings).

Technical Data Sheet: DS45-0010 A