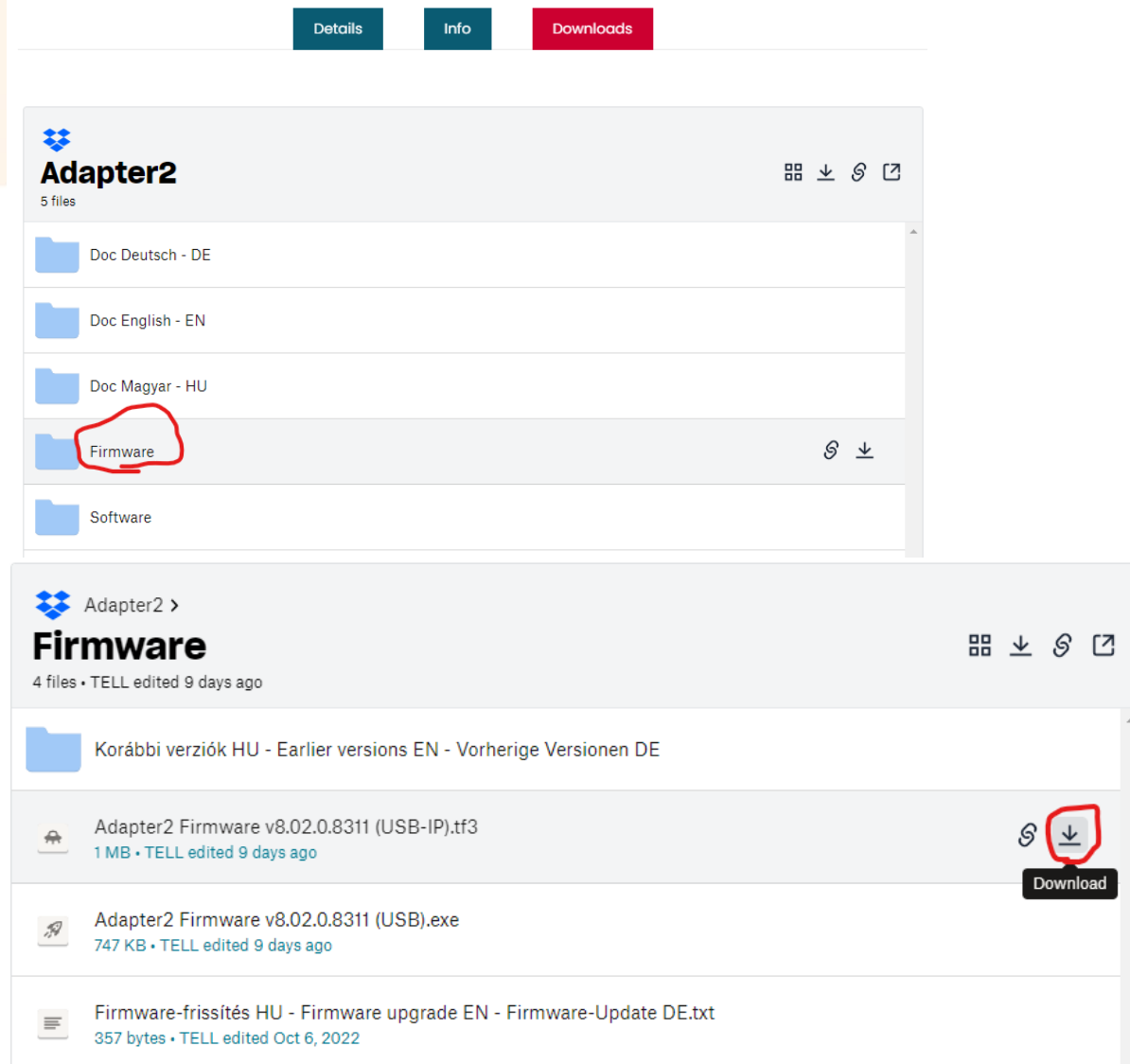


## Instruktion för uppgradering av firmware i Adapter2

Detta dokument förutsätter att programvaran för konfiguration av Adapter2 redan är installerad.

Surfa till <https://www.tell.hu/en/Adapter2-4G-IN4-R1>

Skrolla ner och ladda ner senaste Firmware (.tf3-filen).



Details Info Downloads

**Adapter2**  
5 files

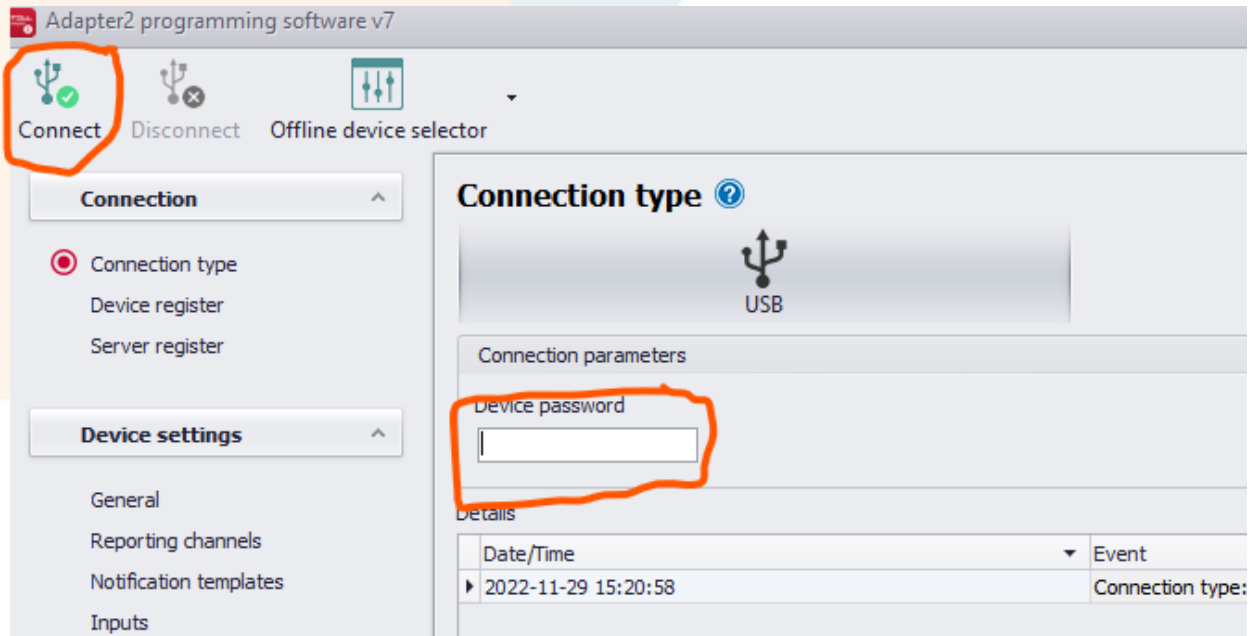
- Doc Deutsch - DE
- Doc English - EN
- Doc Magyar - HU
- Firmware**
- Software

**Adapter2 >**  
**Firmware**  
4 files • TELL edited 9 days ago

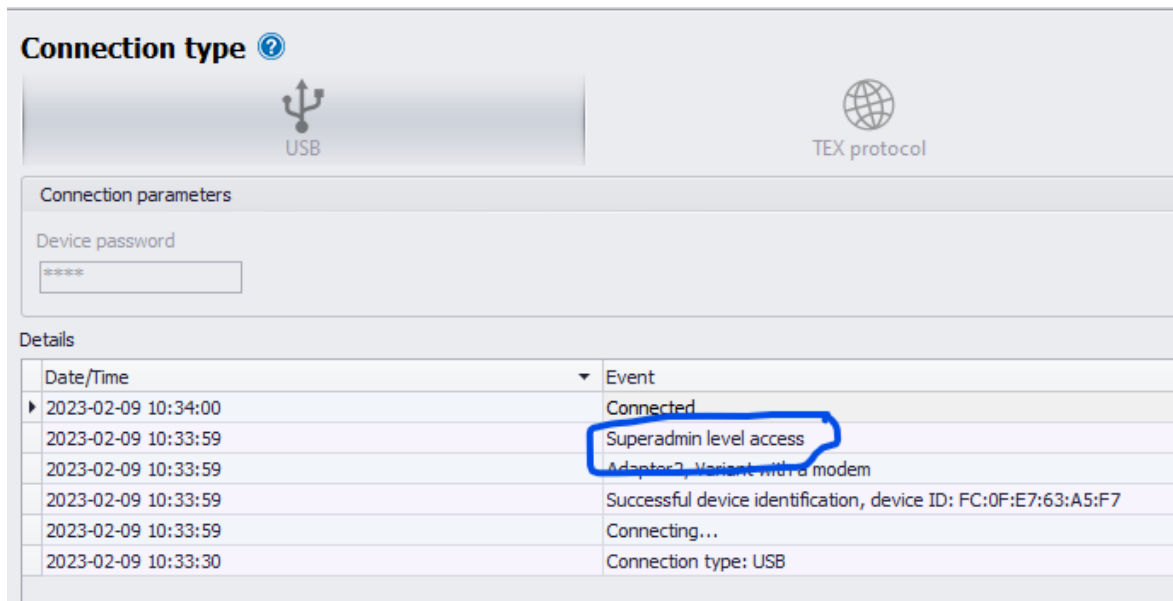
- Korábbi verziók HU - Earlier versions EN - Vorherige Versionen DE
- Adapter2 Firmware v8.02.0.8311 (USB-IP).tf3**  
1 MB • TELL edited 9 days ago
- Adapter2 Firmware v8.02.0.8311 (USB).exe  
747 KB • TELL edited 9 days ago
- Firmware-frissítés HU - Firmware upgrade EN - Firmware-Update DE.txt  
357 bytes • TELL edited Oct 6, 2022

Anslut till enheten med en USB-kabel och starta programvaran "Adapter2...".

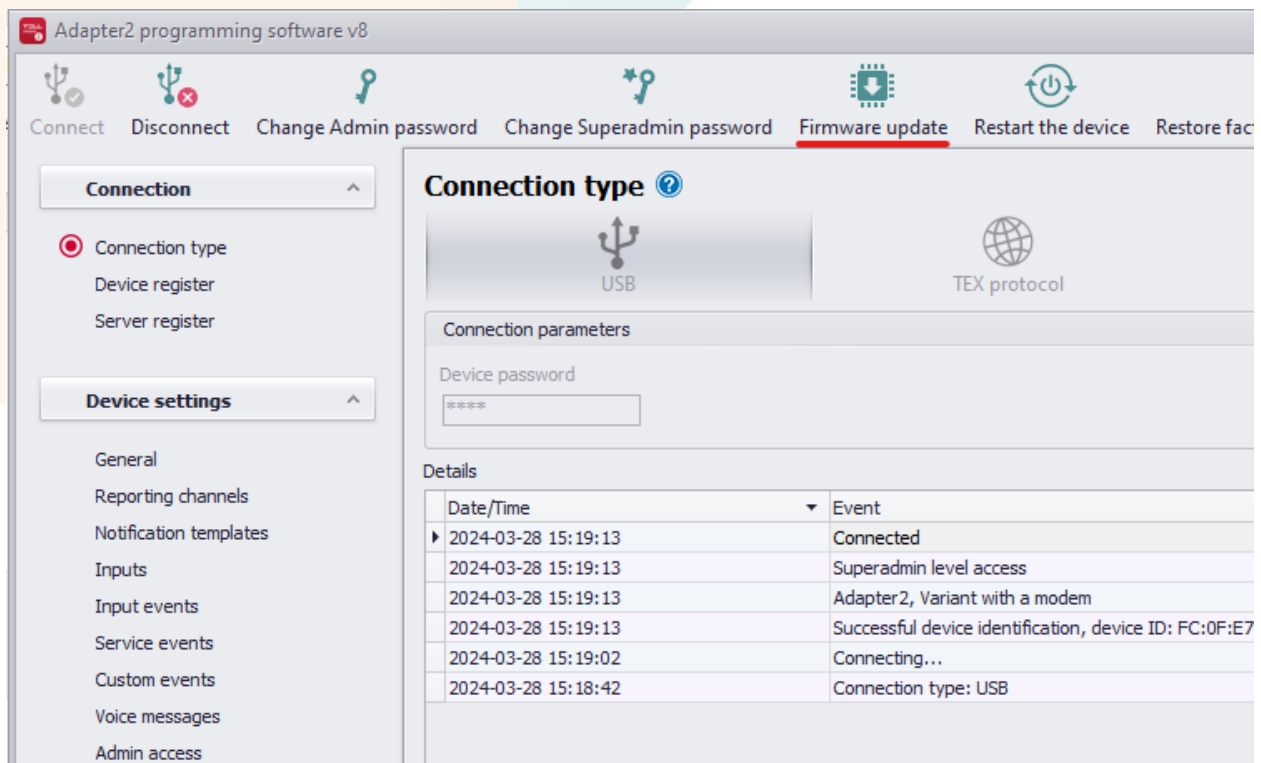
Ange device password 1234 och välj Connect.



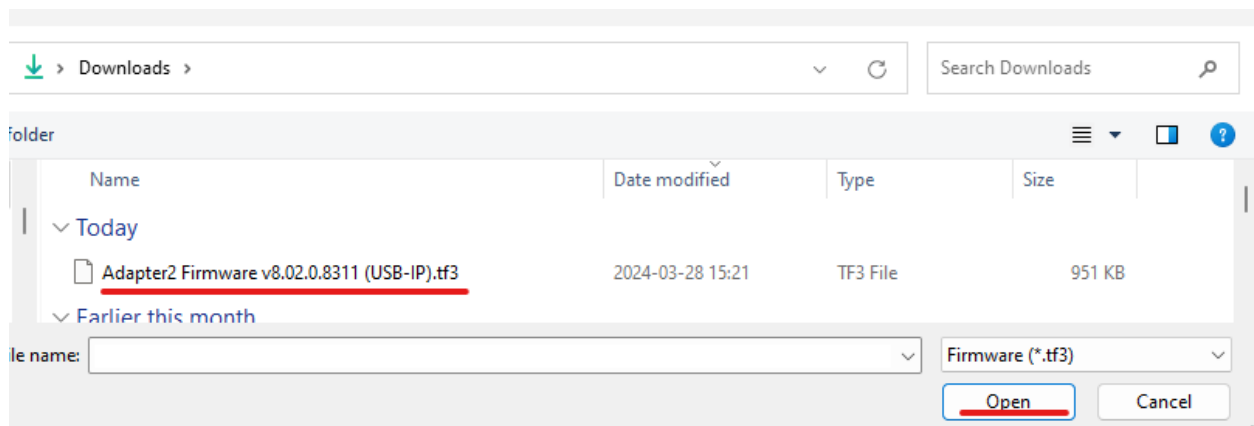
Därefter ska du vara ansluten som superadmin.



Klicka sedan på Firmware update.....

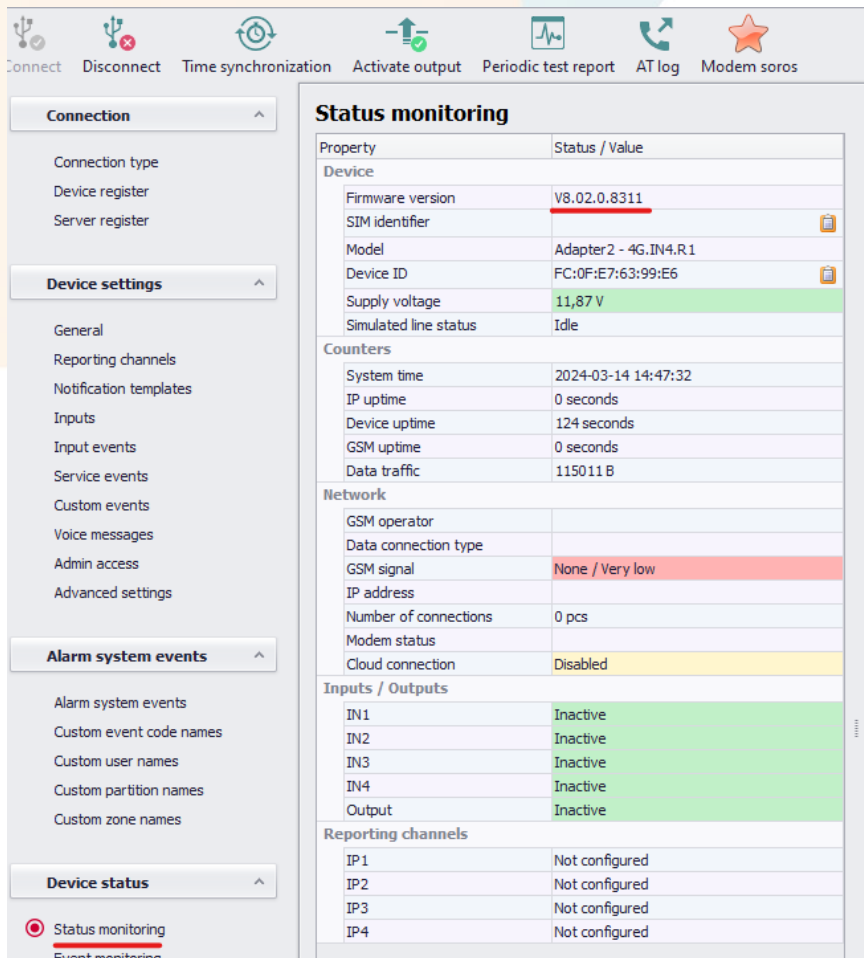


... och välj filen som du laddade ner nyss



Därefter installeras den nya firmwares, enheten startar om och programvaran ansluter igen när det är klart. Den processen tar några minuter.

När den är klar välj Status Monitoring och kontrollera att enheten har den senaste firmware-versionen.



The screenshot shows the ACANDIA Status Monitoring interface. The top navigation bar includes icons for Connect, Disconnect, Time synchronization, Activate output, Periodic test report, AT log, and Modem soros. The left sidebar has sections for Connection, Device settings, Alarm system events, and Device status. The main content area is titled 'Status monitoring' and displays a table of device properties and status.

Property	Status / Value
<b>Device</b>	
Firmware version	V8.02.0.8311
SIM identifier	
Model	Adapter2 - 4G.IN4.R.1
Device ID	FC:0F:E7:63:99:E6
Supply voltage	11,87 V
Simulated line status	Idle
<b>Counters</b>	
System time	2024-03-14 14:47:32
IP uptime	0 seconds
Device uptime	124 seconds
GSM uptime	0 seconds
Data traffic	115011 B
<b>Network</b>	
GSM operator	
Data connection type	
GSM signal	None / Very low
IP address	
Number of connections	0 pcs
Modem status	
Cloud connection	Disabled
<b>Inputs / Outputs</b>	
IN1	Inactive
IN2	Inactive
IN3	Inactive
IN4	Inactive
Output	Inactive
<b>Reporting channels</b>	
IP1	Not configured
IP2	Not configured
IP3	Not configured
IP4	Not configured

Klart!