

# Opal8GV

## 8 Port Entry-level Unmanaged DIN-Rail Switch



### » Overview

Opal8GV series are Kyland produced unmanaged 8-port switches, providing 2 100/1000 SFP port and 6 10/100/1000Base-TX ports. Opal8GV supports wide operating temperature range from -40°C to 75°C, metal housing with IP30 protection class and redundant power inputs, becoming an economical and harsh-environment-resistant solution for video surveillance applications.

### » Key Features

8 10/100/1000Base-TX ports; 2 100/1000 SFP, 6 10/100/1000Base-TX ports

Wide temperature -40°C ~ +75°C

IP30

EMC level 3

CE, FCC

### » Product Specifications

>Technical Specification  
-Standard

IEEE802.3

IEEE802.3u

IEEE802.3ab

IEEE802.3z

IEEE802.3x

IEEE802.1p

IEEE 802.3az

### **-Switch Properties**

MAC Table 8K

Packet Buffer 4Mbit

Packet Forwarding Rate 1.5Mpps

Switching Delay <15 $\mu$ s

Jumbo Frame 9K

Storm control

Multicast/ Broadcast/ Flooding storm

Flow control

802.3x (full duplex) and Back-Pressure (half duplex)

QoS

IEEE 802.1p

### **-Interface**

Port

100/1000 SFP

10/100/1000Base-T(X), RJ45 port

### **-LED**

LEDs on Front Panel

Power LED:PWR1,PWR2

Interface LED:Link & Speed

### **-Power Requirements**

Power Input 12-58VDC

Power Consumption <3W

Reverse protection Support

Redundancy protection Support

**-Physical Characteristics**

Housing Metal

Cooling Natural convection, fanless

Protection Class IP30

Dimension 39mmx118mmx97mm(W×H×D)

Weight 395g

Mounting DIN-Rail or Panel Mounting

**-Environmental Limits**

Operating Temperature -40°C ~ +75°C

Storage Temperature -40°C ~ +85°C

Ambient Relative Humidity 5 ~ 95% (non-condensing)

**-Warranty**

MTBF >25years

Warranty 5 years

**-Approvals**

CE,FCC

**-Industry Standards**

EMI

FCC CFR47 Part 15,EN55022/CISPR22,Class A

EMS

IEC61000-4-2(ESD) ±6kV(contact),±8kV(air)

IEC61000-4-3(RS) 10V/m(80MHz ~ 2GHz)

IEC61000-4-4(EFT) Power Port:±2kV;Data Port:±1kV

IEC61000-4-5(Surge)

Power Port:±1kV/DM,±2kV/CM;Data Port:±2kV

IEC61000-4-6(CS) 10V(150kHz ~ 80MHz)

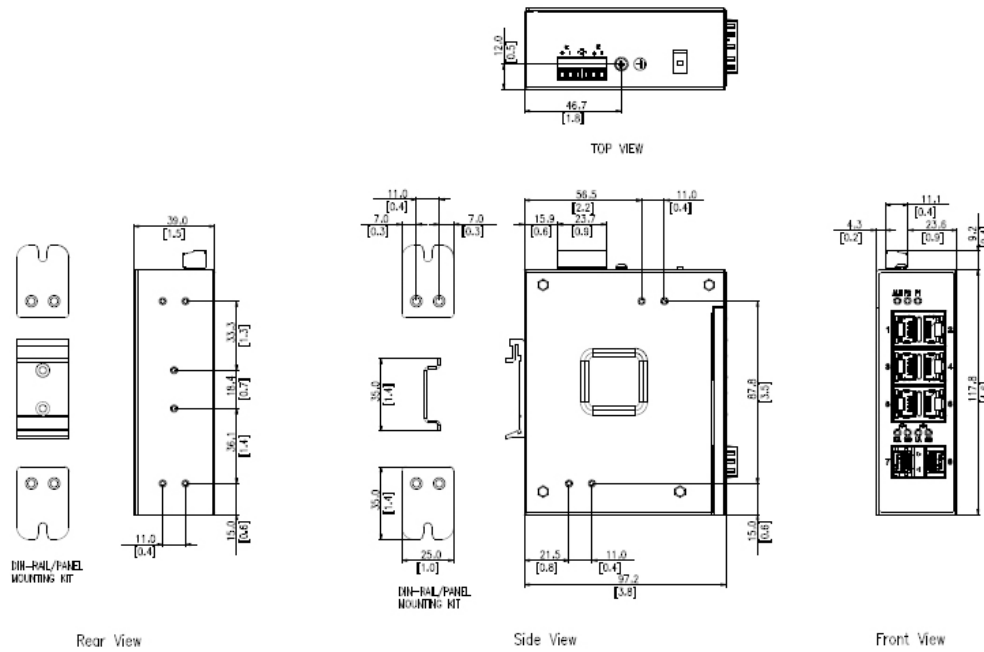
Machinery

IEC60068-2-27 (Vibration)

IEC60068-2-32 (Shock)

IEC60068-2-6 (Free Fall)

## » Mechanical Drawing



## » Ordering Information

Opal8GV-2GX6GE-L15-L15: 2 x 100/1000Base-X, SFP; 6 x 10/100/1000Base-T(X) ports, 12-58VDC, redundant power inputs

Opal8GV-8GE-L15-L15: 8 x 10/100/1000Base-T(X) ports, 12-58VDC, redundant power inputs

Version:2017-07-07 13:36:50