

Mounting instructions

Industrial pressure transmitter CCA-P / CCA-K
screw-in transmitter CPA-P / CPA-K
and OEM pressure transmitter CCE

CCA-K-331, CCA-K-331P, CCA-K-351, CCA-K-351P
CCA-P-331, CCA-P-331i, CCA-P-331P, CCA-P-331Pi
CCA-P-333, CCA-P-333i, CCA-P-334, CCA-P-334i, CCA-P-343
CPA-K-331, CPA-K-351, CPA-P-331, CPA-P-331i,
CCE-17.6XXG, CCE-18.6XXG,
CCE-26.6XXG, CCE-30.6XXG



CCA-P-331



Version: MA_CCA_CCE_CPA_INSSXEN_v.1.00.000

SIMEX Sp. z o.o. - All rights reserved

These mounting instructions are an excerpt from the complete operating manual. It may be downloaded from our homepage, if you are not familiar with the device.

www.simex.pl

- Technical modifications reserved -

WARNING! In order to avoid hazards to operators and damages to the device, the following instructions have to be performed by qualified technical personnel.

WARNING! Adhere to the safety and operating instructions stated in the operation manual. Effective regulations on occupational safety, accident prevention as well as national installation standards and approved engineering techniques must in addition be complied with.

Limitation of liability

If the instructions in the operating manual are not adhered to or if the device is inappropriately used, modified or damaged, liability is not assumed and warranty claims will be excluded.

Intended use

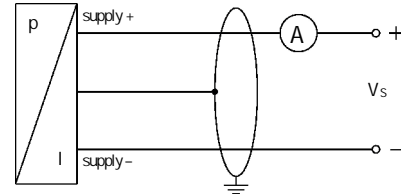
Ensure that the medium is compatible with the media wetted parts and that the device is suitable for the application without restrictions. The technical data listed in the current data sheet is binding and must definitely be observed.

Product identification

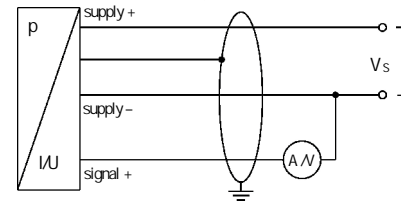
nominal pressure range	designation	ordering code	serial number
SIMEX Sp. z o.o., 80-556 Gdańsk, ul. Wielopole 11 Poland, tel. (+48 58) 762-0777, www.simex.pl			
CCA-P-331	500-1001-1-2-100-C61-1-1-2-000	SN: 12345678	
Input: 0... 1 bar gauge	Output: 4... 20 mA / 2 wire	Supply: 8... 32V DC	Connector Pinout: Vs+: wh Vs-: bn Shield: gn/ye
signal	supply	connector pinout	

Wiring diagrams

2-wire-system (current)



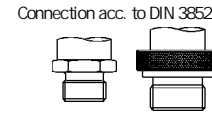
3-wire-system (current/Supply)



For the electrical connection, a shielded and twisted multicore cable is recommended.

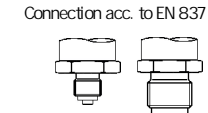
Mounting

- WARNING!** Install the device only in depressurized and currentless state!
- WARNING!** Use a suitable seal, corresponding to the medium and the pressure input



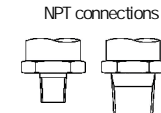
knurled ring: tighten by hand only
wrench size of plastic: max. 3 Nm

- G1/4" steel: approx. 5 Nm
- G1/2" steel: approx. 10 Nm
- G3/4" steel: approx. 15 Nm
- G1" steel: approx. 20 Nm
- G1 1/2" steel: approx. 25 Nm



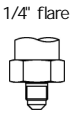
Connection acc. to EN 837

- G1/4": approx. 20 Nm
 - G1/2": approx. 50 Nm
- Note: permitted pressure ranges and materials according to EN 837.



NPT connections

- 1/4" NPT: approx. 30 Nm
- 1/2" NPT: approx. 70 Nm



1/4" flare

max. 10 Nm

Dairy pipe connection



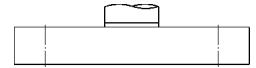
- Centre the connection in the mounting part
- Screw the cup nut onto the mounting part
- Then tighten it with a hook wrench

Clamp and Varivent connection



- Centre the connection in the mounting part
- Fix the device with a suitable fastening element (e.g. semi-ring or retractable ring clamp) according to the supplier's instructions.

Flange connection



Fasten the flange with 4 resp. 8 screws (depending on flange version) on the counter flange.



Internal threads M20x1.5 and 9/16" UNF (for CCA-P-334 / CCA-P-334i)
Screw your high pressure connection into the internal thread of the CCA-P-334 / CCA-P-334i according to the manufacturer's description and tighten it properly.

DANGER! The high pressure tube seals metal-to-metal in the chamfer of the pressure port. No further seal is permitted on this high pressure connection. A wrong installation can cause enormous danger!

Pin-configuration

Electrical connections	ISO 4400	Binder 723 (5-pin)	Binder 723 (7-pin)	M12x1 / metal (4-pin)	field-housing	cable-colours (DIN47100)	Buccaneer (4-pin)	TRIMTRIO (4-pin)
supply +	1	3	3	1	IN +	wh (white)	1	1
supply -	2	4	1	2	IN -	bn (brown)	2	2
signal + (only for 3-wire)	3	1	6	3	OUT +	gn (green)	3	3
shield	ground pin	5	2	4	≡	ye/gn (yellow / green)	4	4
communication-interface	RxD	-	4	-	-	-	-	-
	TxD	-	5	-	-	-	-	-
	GND	-	7	-	-	-	-	-
digital signal RS485	supply +	-	3	1	-	wh (white)	-	-
	GND	-	4	3	-	bn (brown)	-	-
	pin A	-	1	2	-	ye (yellow)	-	-
	pin B	-	2	4	-	pk (pink)	-	-
shield	-	5	-	pressure port	-	ye/gn (yellow / green)	-	-
Electrical connections	Bayonet ML-C-26482 (10-6)							
		2-wire		3-wire				
supply +	A	A						
supply -	B	D						
signal + (only for 3-wire)	-	B						
shield	pressure port							