

Gate Control smartphone application for GSM Gate Control Pro 20/1000 modules

USER'S GUIDE

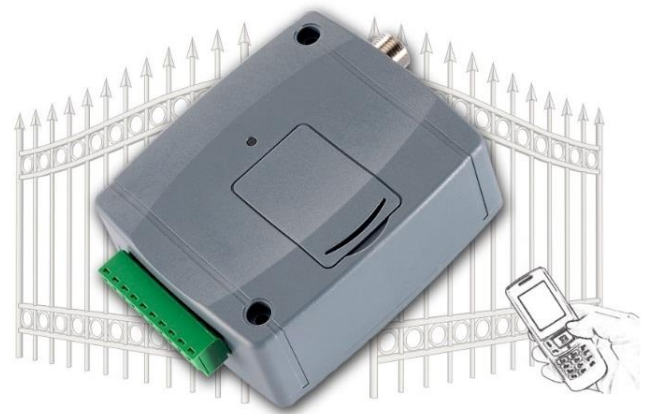
for application version v2.0.0 and newer

Document version: v1.8 23.05.2017

• Brief description of the product

The **GSM Gate Control Pro** device is a GSM-based remote control for electric gates and barriers. The **Gate Control** smartphone application helps you to control your gate/barrier using your smartphone by a simple button tap or GSM call.

The application makes it possible to download logs about control events and to read, change or delete users and settings. You can find detailed information about queries and other operations in the chapters below. Queries and operations (reading, writing, deleting) are only available with the appropriate permissions. The software is available for 3 platforms (Android, Windows Phone, iOS). The pictures found in this document illustrate the usage with an Android smart device.



• System requirements

- Minimum Android version: 4.0
- Minimum Windows Phone version: 8.0
- Minimum iOS version: 7.0

• Data traffic

Warning! Controls, data sending and downloading are done over the internet, therefore the application generates data traffic during use. Regarding data traffic, please use the online camera image viewing function with special care.

• Permissions

The user may have one of the following permissions: User or Administrator. This document presents the full functionality. Certain functions are only available for users who have **Super admin** or **Admin** (administrator) permission.



• Assignment request

Within the program, each gate/barrier is represented on the main screen by a control button (object), to which an icon can be added. The number of control buttons to be added is not limited in the application, which makes it possible to assign and control any number of **GSM Gate Control Pro** devices with the application. New control button can be added by sending an assignment request, and if this is approved, the control button will be created automatically on the main screen. The assignment request can be sent over the Internet using Push notification or by SMS. (The Push Notification system is a notification application which makes it possible to send messages as notifications).

Table of contents

1	ONVIF camera test	3
2	Quick start guide	5
2.1	First steps, if no users are added yet to the system	5
2.2	If you wish to assign first a smart device which is not capable to send SMS, then after step no. 3 of the previous chapter please continue with the following steps:	8
2.3	Adding further users through the <i>Gate Control</i> smartphone application	11
2.4	Receiving and approving or refusing the assignment request on the admin side.....	15
3	Important notes	16
4	The main screen	16
4.1	The main screen in case of using two-gate control mode	19
4.2	The main screen in case of connecting the gate's position limit switch.....	19
5	The right side menu.....	20
6	The left side menu.....	22
6.1	Event log.....	23
6.2	Access templates.....	24
6.3	Global rule	25
6.4	Timed control	26
6.5	Users.....	27
6.6	Holidays	28
7	Differences between platforms	28

1 ONVIF camera test

The **Gate Control** smartphone application is able to display the still and the video image of at most two IP cameras per **Gate Control Pro** device, which support the ONVIF standart. Permission for viewing the images can be configured for each user separately and per camera in the **Gate Control Pro** programming software in the user editing section.

This function works only with cameras that support the ONVIF standard! The manufacturer does not guarantee that the Gate Control Pro can be used with any IP camera, therefore, still before purchasing the **Gate Control Pro** device, the smartphone application assures possibility to test the camera in advance and make sure that your camera works properly with the **Gate Control** smartphone application. The list of ONVIF cameras tested by the manufacturer is available at www.tell.hu at the **Gate Control Pro** product's downloads.

To test an ONVIF camera, tap the **"ONVIF camera test"** button on the **"Assigning the mobile device to the Gate Control device"** page, enter or copy the rtsp URL of the camera into the text field (e.g. you can send over the URL to your smart device by email, then copy and paste), select the desired video player, then tap the **"Test camera"** button.

The URL should be entered using the following format:

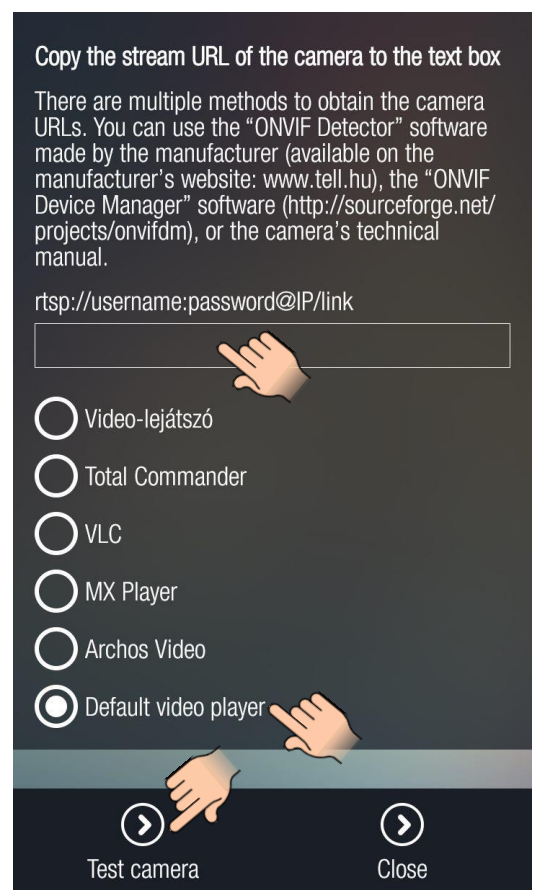
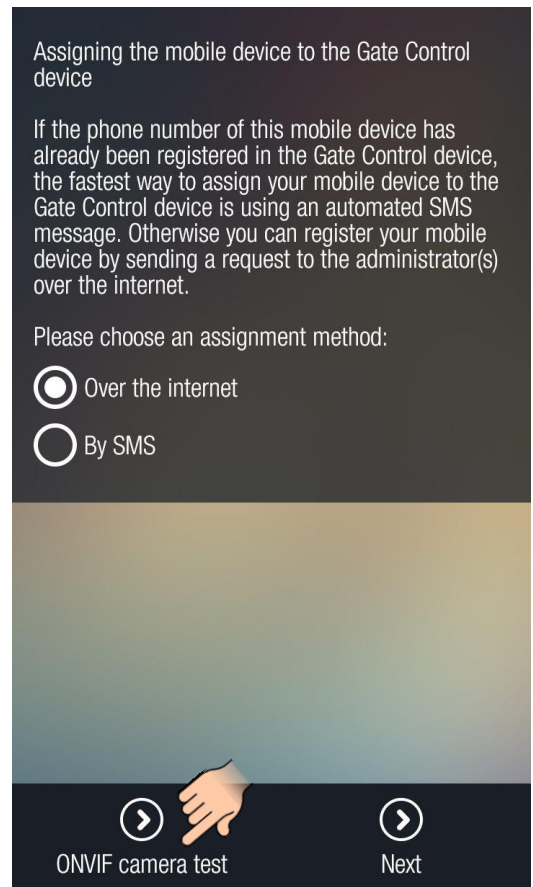
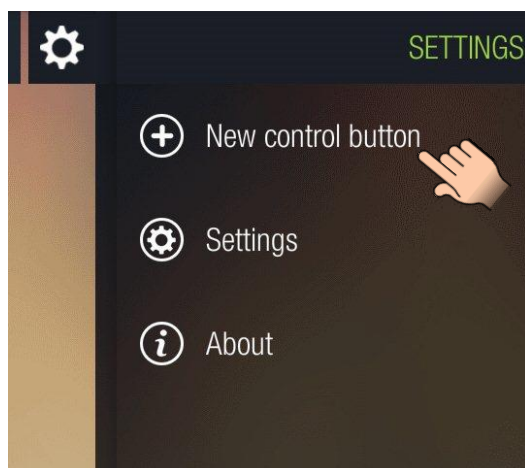
rtsp://username:password@IP/link

If the camera does not request a username and password, use the following format:

rtsp://IP/link

The application lists the video players available on the given smart device. If the video image of the camera is not displayed properly, please choose another video player.

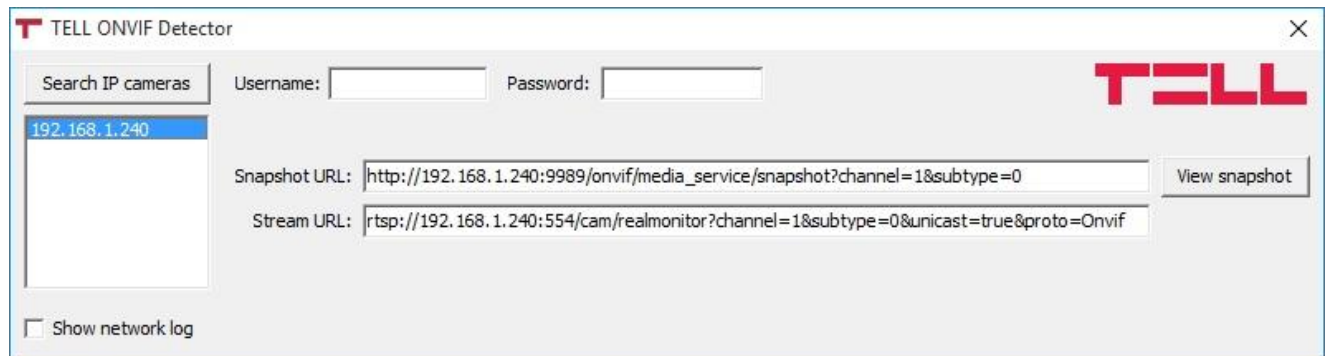
If a **Gate Control Pro** device has already been assigned to the smartphone application, the **"Assigning the mobile device to the Gate Control device"** page can be accessed by tapping the **"Settings"** icon (or selecting the right-side menu by swiping) and then choosing the **"New control button"** option.



There are multiple methods to obtain the camera URLs. You can use the “**ONVIF Detector**” software made by the manufacturer (available on the manufacturer’s website: www.tell.hu), the “**ONVIF Device Manager**” software (<http://sourceforge.net/projects/onvifdm>), or the camera’s technical manual.

Usage of the “**ONVIF Detector**” software made by the manufacturer:

- if the camera requests a username and password for accessing the picture, enter this username and password in the “Username” and “Password” fields
- click on “**Search IP cameras**”
- the program shows the found camera IP addresses in the field below the button
- click on the desired camera IP
- the program shows the snapshot (picture) and the stream URLs in the corresponding URL fields
- by clicking on “**View snapshot**”, the program opens the still picture of the camera in your Internet browser, which helps identifying the camera and checking if the URL works.



If the camera URLs are not shown after clicking on the camera IP, please check the camera settings if there is a profile configured (for snapshot /still picture/ and stream /video/).

The smartphone application includes an RTSP player, therefore the system works with RTSP stream only.

The ONVIF URL detector programs show the local IP addresses of the cameras. In order to access the camera pictures on your smart device from outside your local network (from mobile Internet, or other external WiFi networks) as well, port forwarding should be done in your router regarding the IP addresses of the cameras (forwarding the local IP and port of the cameras to the external (WAN) IP of your router and desired external port). At port forwarding, if using only one camera, regarding the stream port you can leave both the local and external port at 554 (this is the default ONVIF stream port). If using multiple cameras, the local port can remain 554 and for selective access of the cameras you can choose the external ports at will. Please note that the camera may use a different port. In this case please check the port number in the URL obtained with the used ONVIF detector program or in the camera’s technical manual.

Regarding the snapshot port, the local and external ports can be also chosen at will.

In addition to this, for accessing the camera pictures from outside your local network it is necessary to replace the local IP address and port in the URL obtained using the ONVIF URL detector program with the external (WAN) IP address of your router and the external port, and after this enter the modified URL in the Gate Control application.

Example for modification of the stream URL, if using only one camera:

Original URL: `rtsp://192.168.1.240:554/cam/realmonitor?channel=1&subtype=0&unicast=true&proto=Onvif`

Modified URL in case of using static IP address:

`rtsp://WAN IP:554/cam/realmonitor?channel=1&subtype=0&unicast=true&proto=Onvif`

Modified URL in case of using static IP address and username/password:

`rtsp://username:password@WAN IP:554/cam/realmonitor?channel=1&subtype=0&unicast=true&proto=Onvif`

Modified URL in case of using domain name:

`rtsp://domain name:554/cam/realmonitor?channel=1&subtype=0&unicast=true&proto=Onvif`

Modified URL in case of using domain name and username/password:

`rtsp://username:password@domain name:554/cam/realmonitor?channel=1&subtype=0&unicast=true&proto=Onvif`

2 Quick start guide

2.1 First steps, if no users are added yet to the system

1. Configure the following settings using the **Gate Control Pro** PC software (you can find detailed description about the usage of the **Gate Control Pro** PC software in the **GSM Gate Control Pro 20/1000** installation and application manual):
 - Select the “**Settings**” menu and configure the following settings:
 - **APN, server address, server port** (settings necessary for establishing the server connection)
 - **Device name, Phone number** (settings necessary for identification of the Gate Control device)
 - **Time zone** (settings necessary for adjusting the system time)
 - Enable “**Online mode**”

Explanation:

APN: the APN name necessary to connect to the internet. (Ask for this at the GSM service provider of the SIM card inserted in the **Gate Control Pro** module.)

To establish the connection over the Internet, an intermediary server is also necessary, where both the module and the client applications connect, through which this way the connection can be established between the module and the client applications.

The manufacturer of the product provides a server for this purpose available 24 hours a day, which can be used free of charge.

The availabilities of the server provided by the manufacturer are the following:

Server IP address: 54.75.242.103

Server port: 2016

- It is necessary to add at least one user with administrator permission, who uses the **Gate Control** smartphone application and further manages through this the assignment requests sent via smartphone application by new users who wish to join the system (receives notification about assignment requests and can approve or refuse these requests). Select the “**Users**” menu and add yourself with **Super admin** or **Admin** permission, and also enter the phone number of your smartphone on which you wish to use the application.

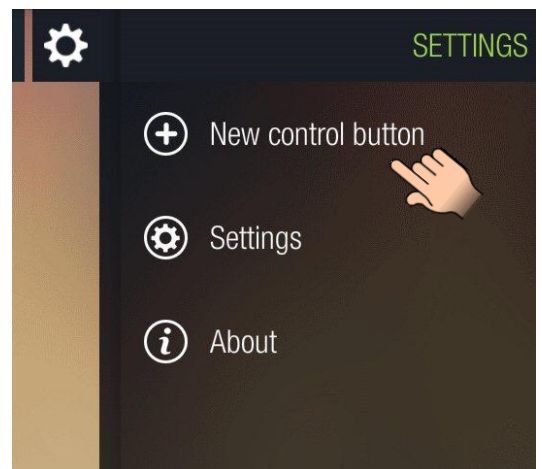
2. Install the **Gate Control** application onto your smartphone. Depending on the platform of your smart device, the application can be downloaded free of charge from **Google Play, App Store, or Windows Phone Store**.

Attention! For **GSM Gate Control Pro** devices with firmware version v2.00.2532 or newer the smartphone application version v2.0.0 or newer should be installed!

The application’s exact name is: **GATE Control**

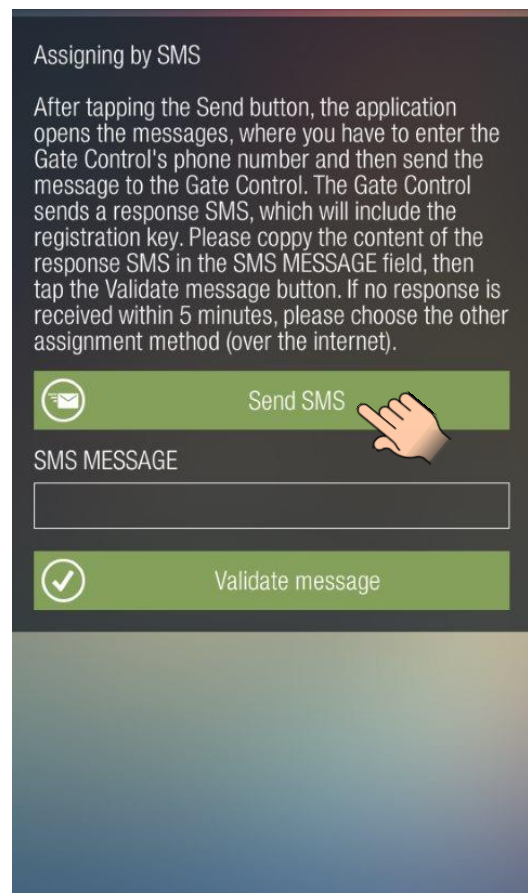
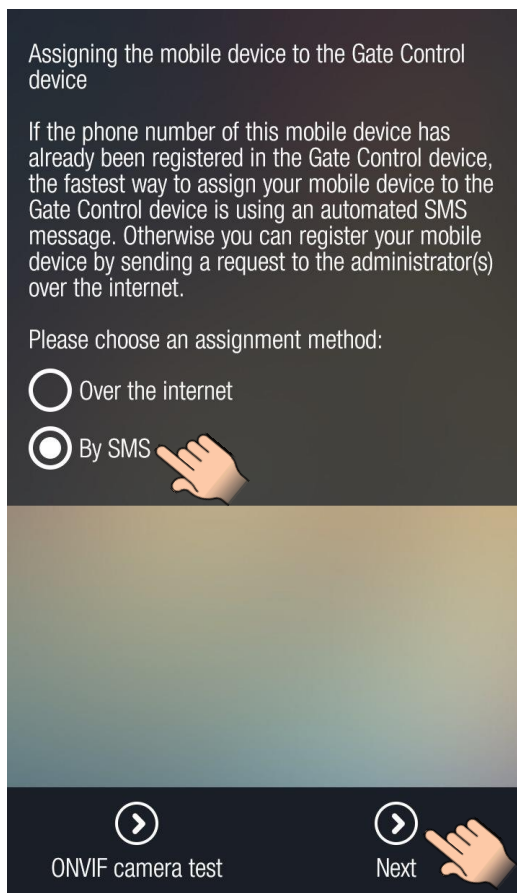
The developer’s name is: **T.E.L.L. Software Hungaria Kft.**

Application icon:

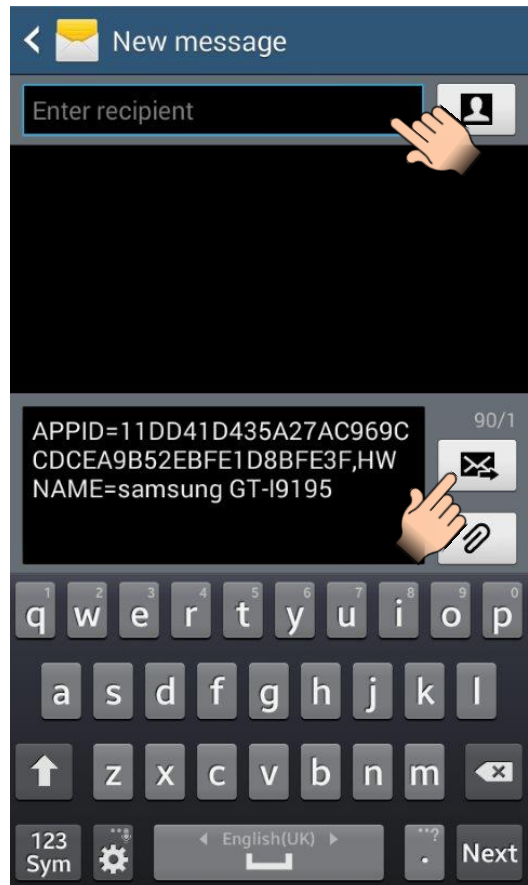


3. Open the application. At first startup the “**Assigning the mobile device to the Gate Control device**” page is shown, until at least one **Gate Control Pro** device is assigned to the application. Later this page can be accessed by tapping the “**Settings**” icon and then selecting the “**New control button**” option.

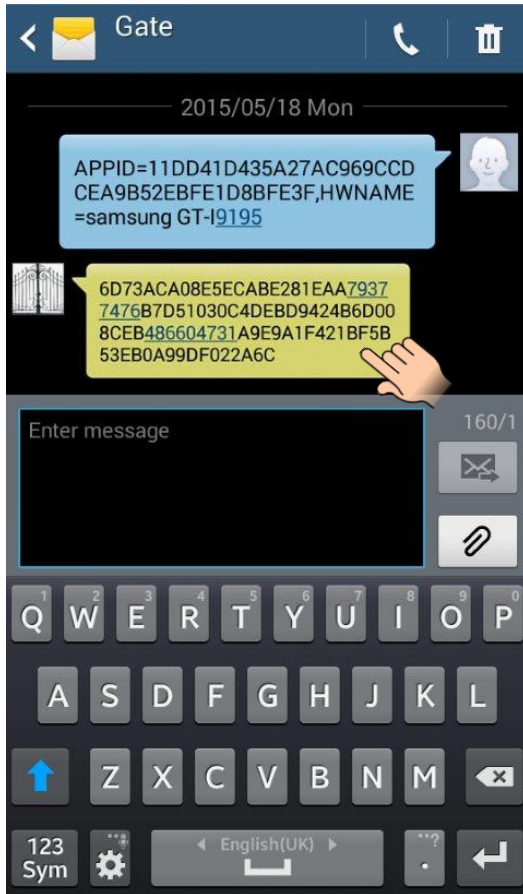
4. For assignment method choose the SMS option, then tap the “Next” button.



5. Tap the “Send SMS” button. The **Gate Control** application will open the phone’s default SMS sending application and will insert automatically in the message window the message to be sent. Do not modify the message! Enter the **Gate Control Pro** module’s phone number as the recipient and send the message. The **Gate Control Pro** module will send a response in a few seconds.



- Copy the response message, go back to the **Gate Control** application, paste the copied message into the “SMS MESSAGE” field, then tap the “Validate message” button.

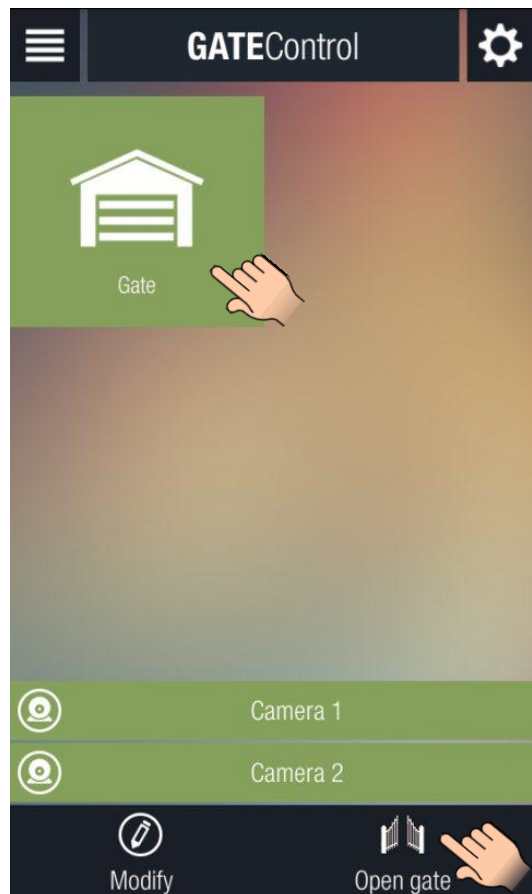


- Thereafter the application connects to the **Gate Control Pro** module over the Internet and validates the assignment, then it adds the control button to the main screen.

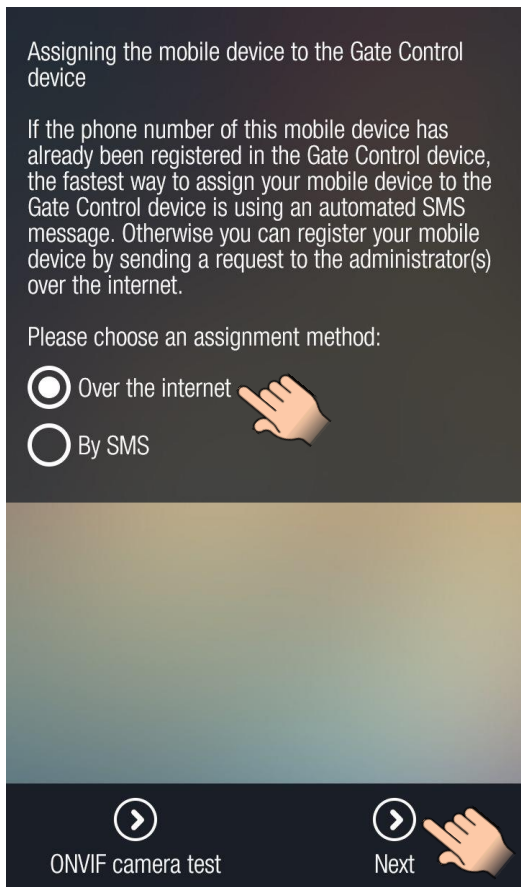
- To control your gate/barrier, select the control button by a short tap, then tap on the “Open gate” button.

Widget support:

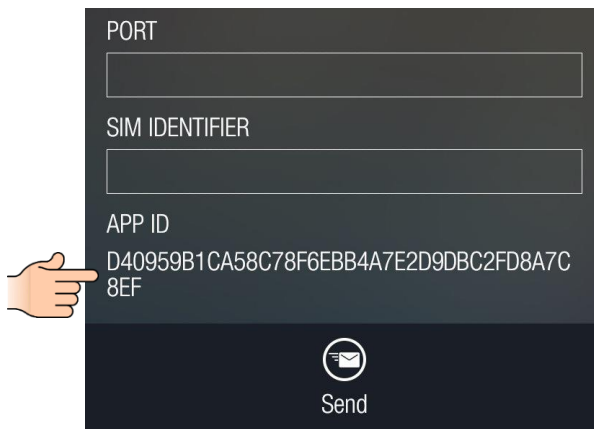
The application also supports widgets. You can add a widget to your smart device’s home screen for each control button, through which you can control your gate/barrier by a single tap. You can find the widget adding option in the “Applications and widgets” menu of your smart device with the name and icon shown in the picture below.



2.2 If you wish to assign first a smart device which is not capable to send SMS, then after step no. 3 of the previous chapter please continue with the following steps:



4. For assignment method choose the assignment over the Internet, then tap the “Next” button. The application navigates to the next page where at the bottom of the page you can find the application identifier of your smart device in the “APP ID” section.



Do not close the application yet, because after the next two steps you will have to return to this page you have opened.

5. Edit the added user in the **Gate Control Pro** PC software. Click on the “New” button in the “Client identifiers” section of the user’s setup window. This will open the client identifier window. Enter a name for your smart device in the “Name” field, then in the “APP ID” field enter the application identifier displayed in the “APP ID” section of the **Gate Control** smartphone application as mentioned above, then click on the “Write” button. By this step you have assigned the given smart device to the user. (You can find detailed description about the usage of the **Gate Control Pro** PC software in the **GSM Gate Control Pro 20/1000** installation and application manual.)
6. By connecting the **Gate Control Pro** module to the computer via USB, the **Gate Control Pro** PC software reads the identifier of the SIM card installed into the connected module automatically and in the “Connection” menu it prepares the QR code that includes the three connection data (server IP address, port number and SIM identifier). You have an option to read the QR code in the **Gate Control** smartphone application, thereby you will not need to type these when required.



7. Return to the smartphone application to the “Assigning over the Internet” page opened previously.

8. In the “USERNAME” field enter the user name which you have added in the **Gate Control Pro** PC software, then tap the “Read QR code” button and read the QR code generated by the PC software directly from the computer’s monitor. By this the IP address, port and SIM identifier fields will be filled in automatically. Tap the “Send” button to send the assignment request.

The QR code belonging to the connected device: {54.75.242.103,2016,8936200005150663860F}



If the QR code cannot be read for any reason, you can also require the IP address, port number and SIM identifier data from the **Gate Control Pro** module by SMS. For this, instead of “Read QR code” button use the “Send SMS to the Gate Control” button. The **Gate Control** application will open the phone’s default SMS sending application and will insert automatically in the message window the message to be sent. Do not modify the message! Enter the **Gate Control Pro** module’s phone number as the recipient and send the message. The **Gate Control Pro** module will send a response in a few seconds that will include the IP address, port number and SIM identifier, which you can copy one by one from the received message and paste into the appropriate fields in the **Gate Control** application.

Assigning over the internet

After filling in the fields and tapping the Next button, an assignment request will be sent to the administrator(s). You can use the Gate Control as soon as an administrator approves your request.

Attention! If there is no smartphone application assigned to any administrator yet in the Gate Control device, the administrator cannot receive your request. In this case please contact the Gate Control's operator and ask for assigning your application manually.

Explanatory notes
Filling in the username is necessary.
Filling in the phone number is not necessary, but the administrator can call you back on the given number and also you can control the Gate Control device by call from this phone number.
IP address / Port / SIM identifier: these data you can provide in three ways:
1. by reading the Gate Control device's QR code (the fields will be filled in automatically)
2. by sending SMS to the Gate Control device (you have to copy the data from the response sent by the Gate Control and paste in the fields)
3. by typing the data manually if you know the information

USERNAME
PETER

OWN PHONE NUMBER
+36301234567

Read QR code

Send SMS to the Gate Control

IP ADDRESS

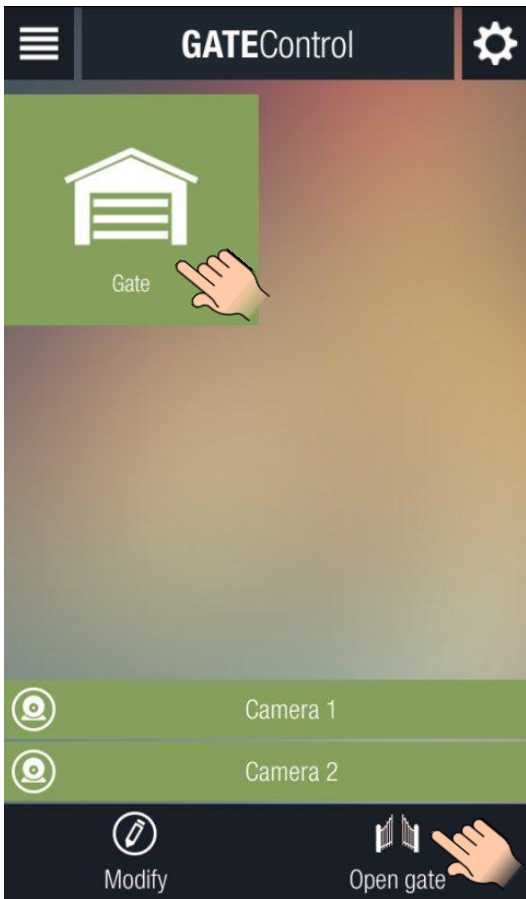
PORT

SIM IDENTIFIER

APP ID
D40959B1 CA58C78F6EBB4A7E2D9DBC2FD8A7C8EF

Send

9. In a few seconds you will receive your own assignment request on your smart device by Push notification. Tap the incoming notification on the notification panel of your smart device. The assignment request form will pop up. If needed, configure the user settings (permission, access templates, options), then tap the “**Approve**” button.
10. Thereafter the application will send the approval to the **Gate Control Pro** module, then it adds the control button to the main screen.
11. To control your gate/barrier, select the control button by a short tap, then tap on the “**Open gate**” button.



Widget support:

The application also supports widgets. You can add a widget to your smart device’s home screen for each control button, through which you can control your gate/barrier by a single tap. You can find the widget adding option in the “**Applications and widgets**” menu of your smart device with the name and icon shown in the picture below.



Existing user's assignment request

NAME

PHONE NUMBER

AUTHORIZER

PERMISSION

TEMPLATES

WEEKDAYS
 AFTERNOON
 MORNING
 WEEKEND

Callback requested
 SMS response requested
 Camera 1
 Camera 2
 Output 1
 Output 2
 Output 1 by phone call
 Output 2 by phone call
 Push notification (doorbell)
 Push notification (technical error)
 Push notification (gate limit error)
 SMS notification (gate limit error)

CUSTOM RULES

AUTHORIZER

From Until

Comment

2.3 Adding further users through the *Gate Control* smartphone application

Further users can be added by following the instruction below:

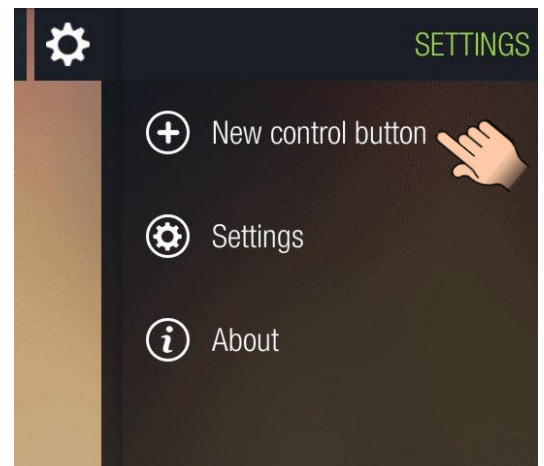
1. As a new user, install the **Gate Control** smartphone application. Depending on the platform of your smart device, the application can be downloaded free of charge from **Google Play, App Store, or Windows Phone Store**.

Attention! For **GSM Gate Control Pro** devices with firmware version v2.00.2532 or newer the smartphone application version v2.0.0 or newer should be installed!

The application's exact name is: **GATE Control**

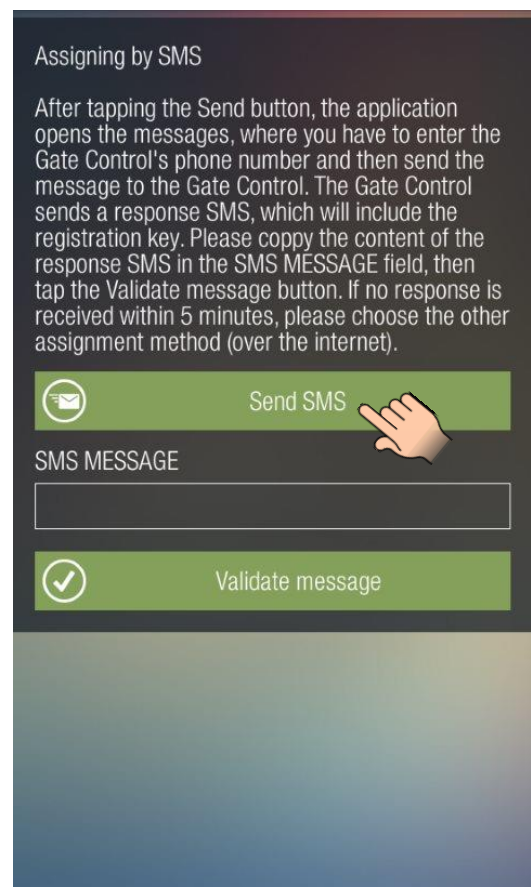
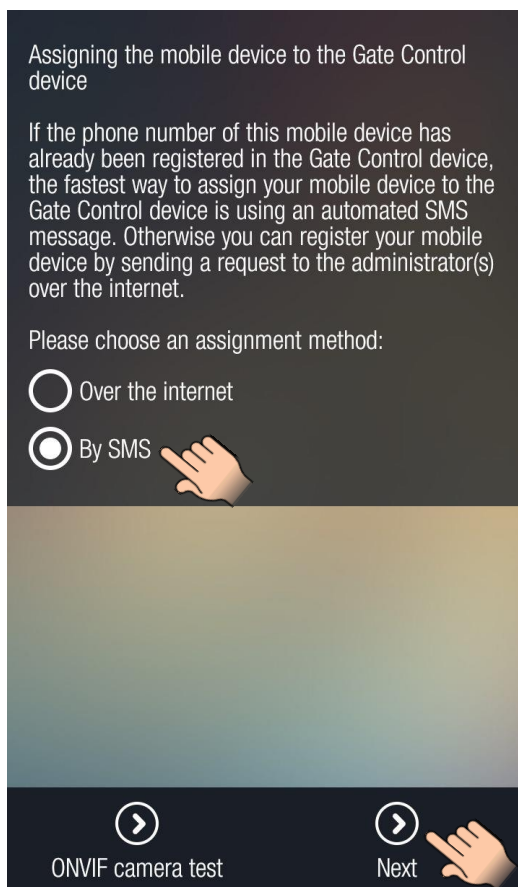
The developer's name is: **T.E.L.L. Software Hungaria Kft.**

Application icon:

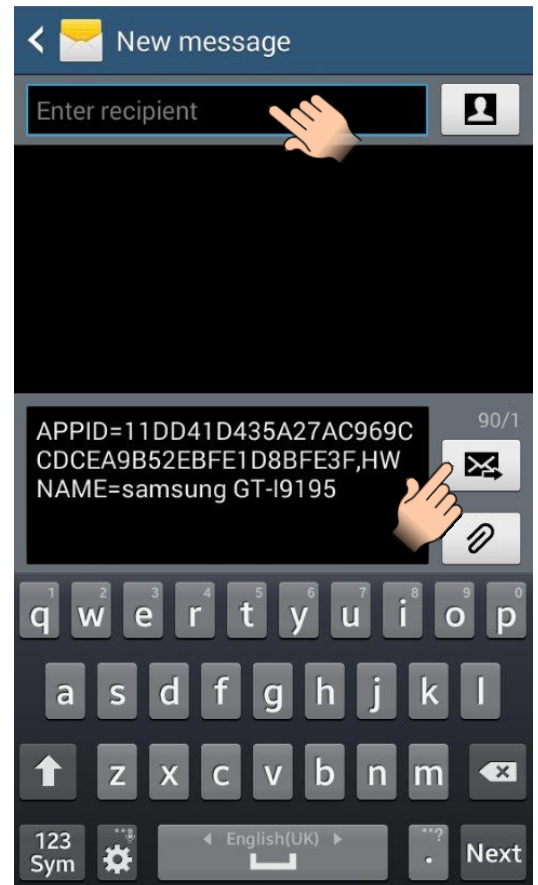


2. Open the application. At first startup the “**Assigning the mobile device to the Gate Control device**” page is shown until at least one **Gate Control Pro** device is assigned to the application. Later this page can be accessed by tapping the “**Settings**” icon and then selecting the “**New control button**” option.
3. If you are already registered in the system (your phone number has already been added) and only wish to assign the **Gate Control** application, then you can choose the assignment by SMS. In this case the assignment is done directly in the **Gate Control Pro** module, therefore there is no need to wait for an administrator to approve the request. To assign the smart device by SMS, follow the steps below:

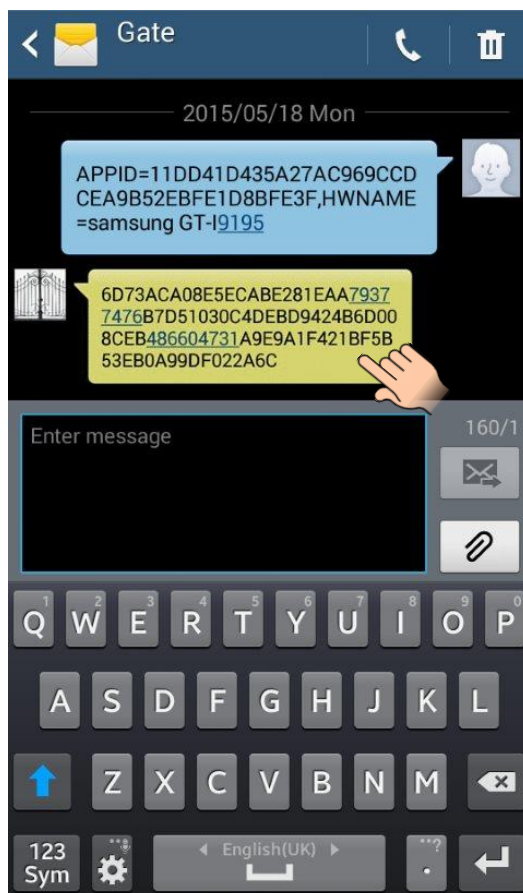
- For assignment method choose the SMS option, then tap the “**Next**” button.



- Tap the “Send SMS” button. The **Gate Control** application will open the phone’s default SMS sending application and will insert automatically in the message window the message to be sent. Do not modify the message! Enter the **Gate Control Pro** module’s phone number as the recipient and send the message. The **Gate Control Pro** module will send a response in a few seconds



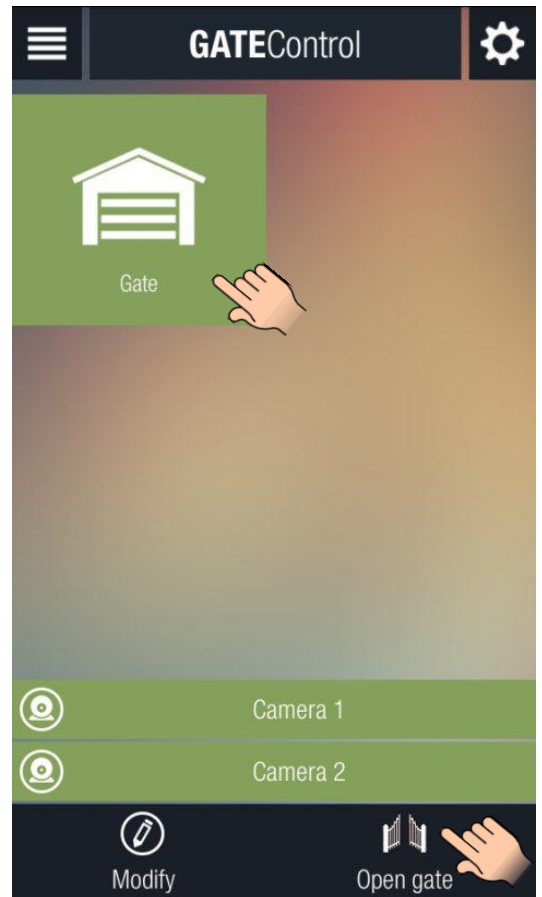
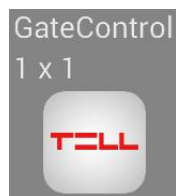
- Copy the response message, go back to the **Gate Control** application, paste the copied message into the “SMS MESSAGE” field, then tap the “Validate message” button.



- Thereafter the application connects to the **Gate Control Pro** module over the Internet and validates the assignment, then it adds the control button to the main screen.
- To control your gate/barrier, select the control button by a short tap, then tap on the **“Open gate”** button.

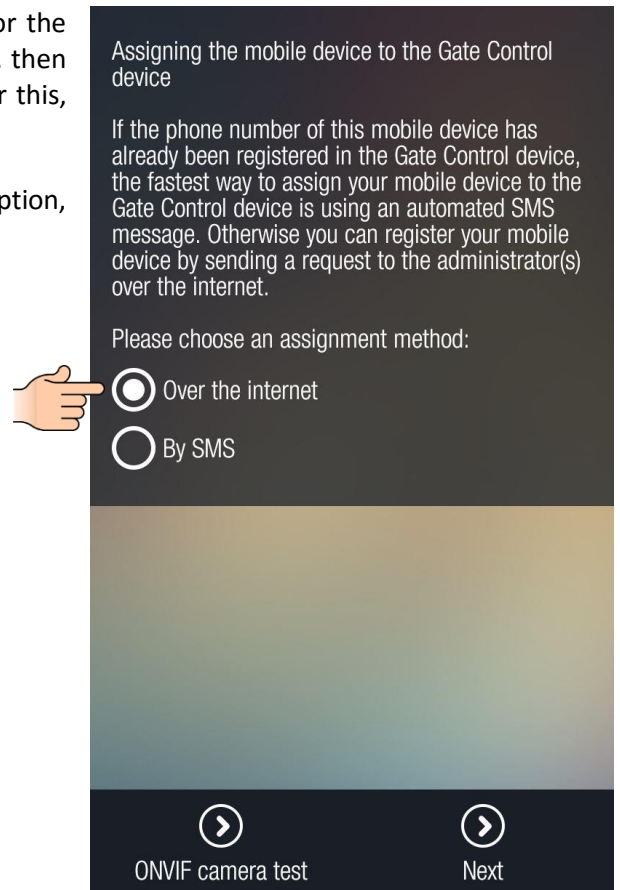
Widget support:

The application also supports widgets. You can add a widget to your smart device’s home screen for each control button, through which you can control your gate/barrier by a single tap. You can find the widget adding option in the **“Applications and widgets”** menu of your smart device with the name and icon shown in the picture below.



4. If you are a new user (do not exist in the system yet) or the smart device to be assigned is not capable to send SMS, then the assignment can be done over the Internet only. For this, follow the steps below:

- For assignment method choose the Internet option, then tap the **“Next”** button.



- Enter a username for yourself in the “**USERNAME**” field. The user name should not exceed 40 characters. The user name is case sensitive. Entering a user name is mandatory. Attention! The following characters should not be used: ~ ^ < > = ' " , | \$ &
- Entering your phone number in the “**OWN PHONE NUMBER**” field is not mandatory, but the administrator can call you back on the provided phone number if necessary and also you can control the **Gate Control Pro** device by call from this phone number if controlling over the internet fails for any reason. Therefore it is recommended to enter the phone number.
- Entering the IP address, port number and SIM identifier is necessary. You can provide these data in three ways:
 - If there is a QR code available for the given **Gate Control Pro** device which includes the data, tap the “**Read QR code**” button and read the QR code. In this case the fields will be filled in automatically with the appropriate data.
 - If no QR code is available, but you know the phone number of the **Gate Control Pro** device, you can send an SMS to the **Gate Control Pro** to send you the data. For this tap the “**Send SMS to the Gate Control**” button. The **Gate Control** application will open the phone’s default SMS sending application and will insert automatically in the message window the message to be sent. Do not modify the message! Enter the **Gate Control Pro** module’s phone number as the recipient and send the message. The **Gate Control Pro** module will send a response in a few seconds that will include the IP address, port number and SIM identifier, which you can copy one by one from the received message and paste into the appropriate fields in the **Gate Control** application.
 - If you know the requested data, type the data into the appropriate fields.

- After filling in the fields tap the “**Send**” button.

- The system will send the request to the administrator(s). The system will inform you by Push notification as soon as an administrator approves your request. By tapping the received notification the **Gate Control** application will open automatically and (or if it was already open, it will appear in the foreground) will add the control button to the main screen.

Assigning over the internet

After filling in the fields and tapping the Next button, an assignment request will be sent to the administrator(s). You can use the Gate Control as soon as an administrator approves your request.

Attention! If there is no smartphone application assigned to any administrator yet in the Gate Control device, the administrator cannot receive your request. In this case please contact the Gate Control's operator and ask for assigning your application manually.

Explanatory notes
 Filling in the username is necessary.
 Filling in the phone number is not necessary, but the administrator can call you back on the given number and also you can control the Gate Control device by call from this phone number.
 IP address / Port / SIM identifier: these data you can provide in three ways:
 1. by reading the Gate Control device's QR code (the fields will be filled in automatically)
 2. by sending SMS to the Gate Control device (you have to copy the data from the response sent by the Gate Control and paste in the fields)
 3. by typing the data manually if you know the information

USERNAME
 PETER

OWN PHONE NUMBER
 +36301234567

Read QR code

Send SMS to the Gate Control

IP ADDRESS

PORT

SIM IDENTIFIER

APP ID
 D40959B1CA58C78F6EBB4A7E2D9DBC2FD8A7C8EF

Send

2.4 Receiving and approving or refusing the assignment request on the admin side

The administrator(s) will be responsible for receiving, approving or refusing the assignment requests. When a new user sends an assignment request by Push notification over the Internet, the administrator's smart device will receive the notification in the device's notification bar. By tapping the received notification, the **Gate Control** application opens the assignment request form automatically which the administrator can approve or refuse.

When refusing, filling in the comment field is mandatory. If not filled in, an error message will show up.

The picture on the right shows the assignment request form.

The **"NAME"** and **"PHONE NUMBER"** fields indicate the data entered by the applicant. The **"PERMISSION"** section includes a drop-down menu where you can select a permission level for the applicant who wants to control the **GSM Gate Control Pro** device. Below the permission section you can select which access templates to be assigned to the user and still below the control confirmation options (callback, SMS response), the ONVIF camera access options and the doorbell (Push Notification) function (assigned by factory default to input IN1 of the **GSM Gate Control Pro** device) can be enabled. If the **GSM Gate Control Pro** device is configured to use control mode no. 2, then selecting the output control permissions (Output 1 and Output 2) will also be available. The **GSM Gate Control Pro** can notify the user by Push Notification and/or by SMS in case that the gate fails to open or close. This can be configured by the options related to gate position limit error. In order to use this function it is necessary to connect the gate's limit position switch to the module. The **"CUSTOM RULES"** option can be used to override the access templates, to grant or deny entry for a given period of time. The **"Comment"** field must be filled in if the administrator refuses the request.

Attention! The following characters should not be used:
~ ^ < > = ' " , | \$ &

After tapping the **"Approve"** or **"Refuse"** button, the applicant will receive a Push notification about the decision. If the request has been approved, the control button will automatically be added to the **Gate Control** application's main screen on the applicant's smart device.

If the administrator needs further information in order to approve or refuse the request, may call the applicant by tapping on the **"Call"** button (only if the applicant has provided his/her phone number when filling in the assignment request form).

Existing user's assignment request

NAME
PETER

PHONE NUMBER
+36301234567

AUTHORIZER
Software

PERMISSION
Super administrator

TEMPLATES

- WEEKDAYS
- AFTERNOON
- MORNING
- WEEKEND

- Callback requested
- SMS response requested
- Camera 1
- Camera 2
- Output 1
- Output 2
- Output 1 by phone call
- Output 2 by phone call
- Push notification (doorbell)
- Push notification (technical error)
- Push notification (gate limit error)
- SMS notification (gate limit error)

CUSTOM RULES
None

AUTHORIZER

From: 2015.05.18 10:10 Until: 2015.05.18 10:10

Comment

Approve Call Refuse

3 Important notes

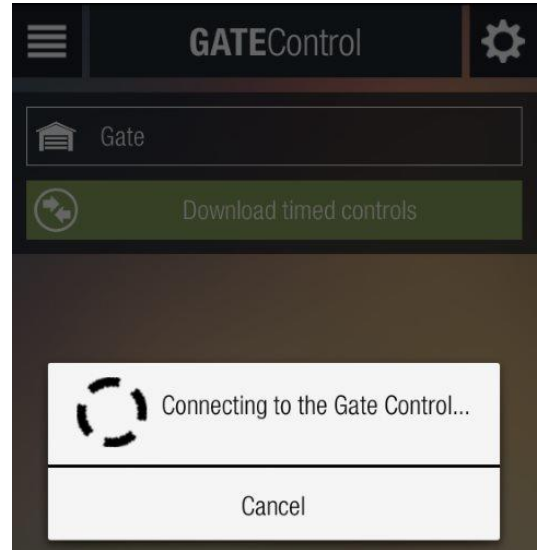
- General information regarding navigation

When navigating on the main screen, if you have the appropriate permission level you can open the left or right menu by dragging the page from the left side to the right or from the right to the left, or by tapping the icons at the top corners of the main screen. The left menu is not available for users who have “User” permission level in the system, only for the ones with “Admin” or “Super admin” permission.

- Information related to data query

Data queries are performed directly from the **GSM Gate Control Pro** module.

Data query from the device is done through GPRS connection, therefore in case of some data queries (see later) it might take minutes until all data are displayed. During data queries it is indicated by a pop-up window that the program works in the background. The “Cancel” button can be used to cancel the communication process. For data queries the program must establish the connection with the system and the “Cancel” button appears only when this is done. If you tap the “Cancel” button, the program cancels the data query, but it displays the data downloaded before the process was cancelled.

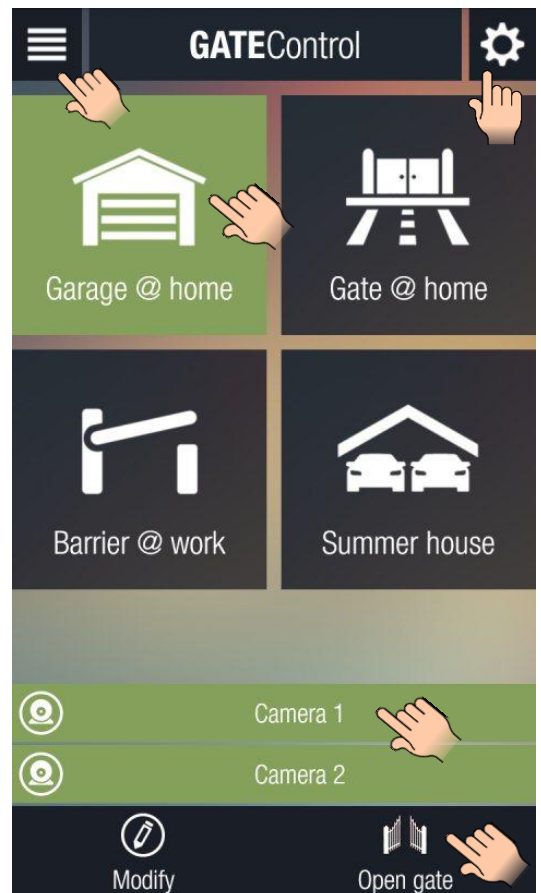
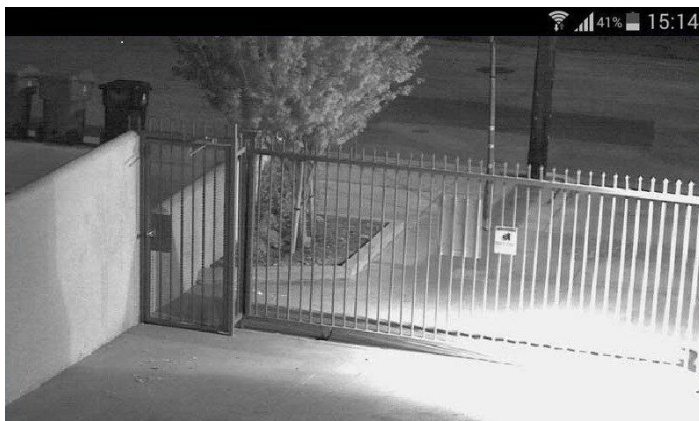


4 The main screen

After assigning your smart device to the **GSM Gate Control Pro** device, the control button is added automatically to your main screen as shown in the picture on the right side. The icons placed at the top left and right corners can be used to open the menus.

Opening your gate/barrier: tap to select the control button, then tap the “Open gate” button.

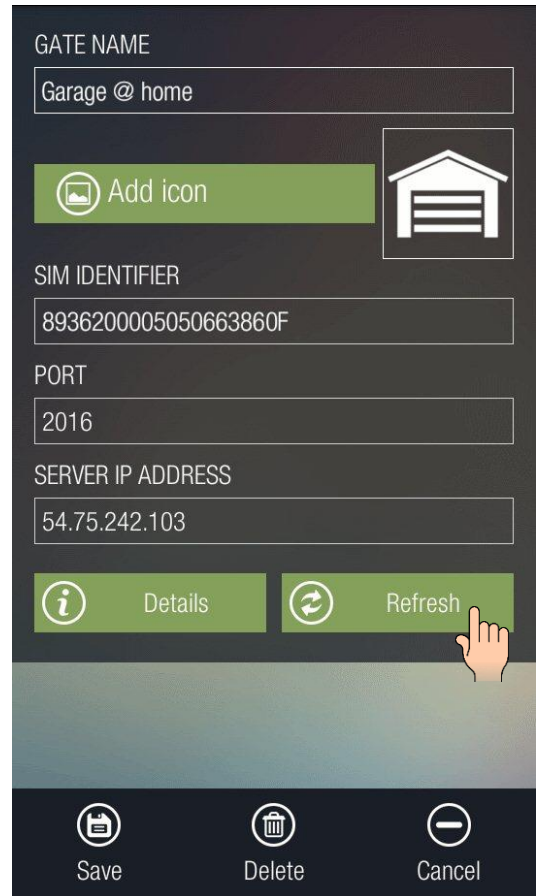
The “Camera 1” and “Camera 2” buttons can be used to view the images of two cameras, if ONVIF camera availabilities have been provided when the **GSM Gate Control Pro** was configured, and if the given user’s permissions allow viewing the cameras.



Viewing the details and the connection information of the object and refreshing the basic information and permissions are available after selecting the object and tapping the “**Modify**” button. After tapping the button, the page shown in the picture on the right side opens.

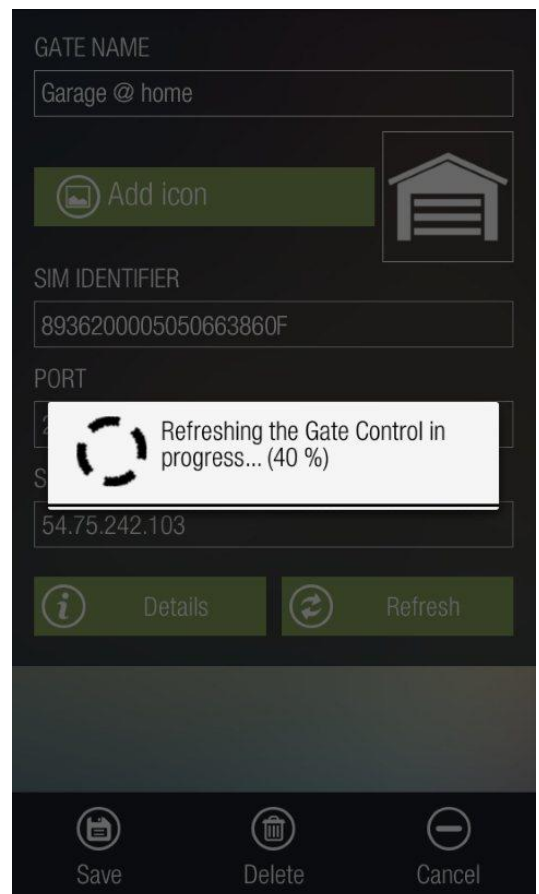
In the “**GATE NAME**” and “**Add icon**” sections you can enter a custom name for your gate/barrier and select an icon. The changes can be saved and applied by tapping the “**Save**” button.

The “**Delete**” button can be used to delete the selected control button.



After tapping the “**Refresh**” button, the application reconnects to the system and updates all data and permissions. Refreshing is necessary if the permissions of the user have been changed (with an(other) administrator level smartphone application or with the PC programming software), because in this case the application is not informed about the changes and operates with the permissions configured earlier. The refreshing progress status is indicated as shown in the picture on the right side. This process cannot be cancelled, you have to wait until it finishes, else it may cause malfunction in the operation of the functions.

It is important to mention that if you experience problems with any operation related to modifications or data query, refreshing the control button of the given GSM Gate Control Pro may solve the problem.



Details about the object (control button) representing the given **GSM Gate Control Pro** device are available by tapping on the “**Details**” button. This opens the page shown in the picture on the right side.

This option provides information about the connection status, the settings and the names of files used for synchronization.

GATE CONTROL NAME
Garage @ home

AUTHENTICATION
Connecting to server successful.

GC CHANNEL
Connecting to server successful.

IP ADDRESS
54.75.242.103

PORT
2016

SERVER TIMEOUT
20

SIM IDENTIFIER
8936200005050663860F

NUMBER OF INCOMING SMS MESSAGES
5

NUMBER OF SENT SMS MESSAGES
5

FIRST DAY OF THE WEEK
mon

USER TABLE
USER


TEMPLATES TABLE
SCHEMAS

EVENT LOG TABLE
LOG

CUSTOMIZE TABLE
TRANSL

HOLIDAYS TABLE
HOL

TIMED CONTROL TABLE
FSCH

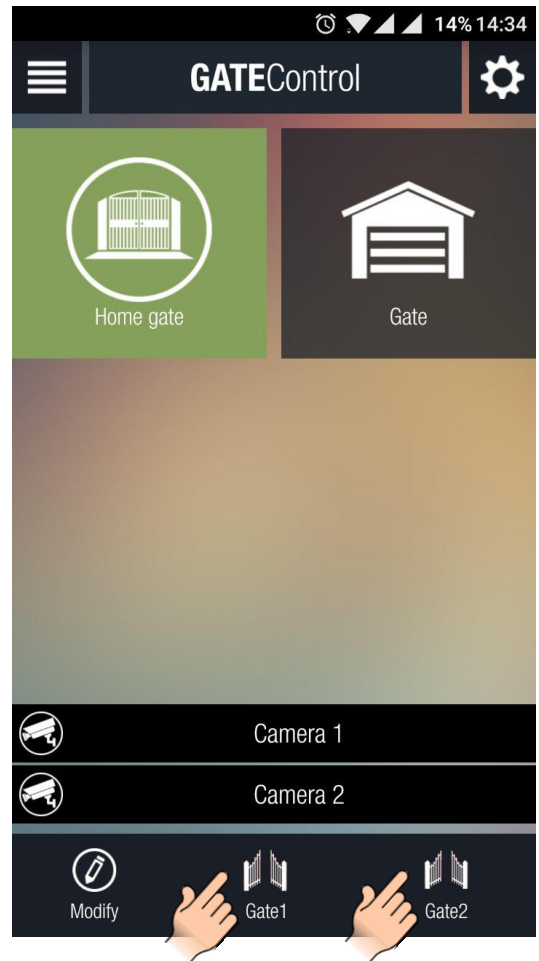

Cancel

4.1 The main screen in case of using two-gate control mode

Using the smartphone application, the **GSM Gate Control Pro** is able to control two different gates selectively. Attention! The module makes possible controlling two gates in control modes 1 and 2 only, since for all other control modes both outputs are used to control a single gate. You can find details about control modes and their configuration options in the **GSM Gate Control Pro 20/1000** installation and application manual.

So if using control mode 1 or 2, you have possibility to control two gates with a single **GSM Gate Control Pro** device. In the "Users" menu of the **GSM Gate Control Pro** PC software you can configure which user should be able to control which gate. Of course, permission can be granted to control both gates as well.

If using the proper control mode and the user has the necessary permissions, two control buttons will show up in the smartphone application. The two buttons (from left to right) will control the gate connected to output 1 and respectively to output 2.



4.2 The main screen in case of connecting the gate's position limit switch

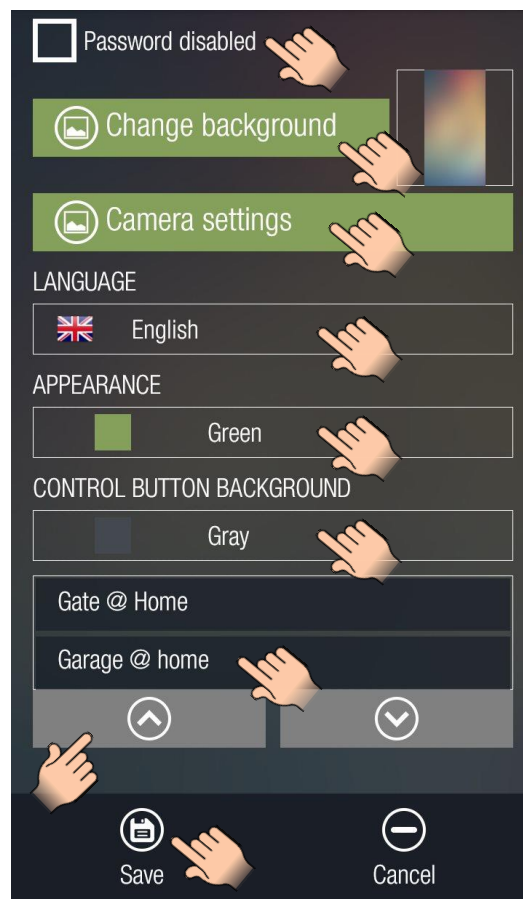
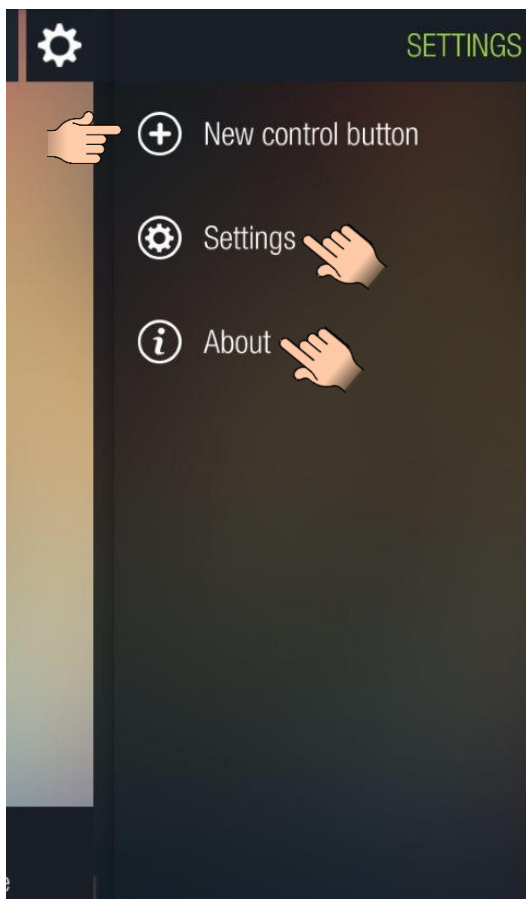
You can connect the position limit switch of the gate to the GSM Gate Control Pro device. In case of doing so, the module can notify the user by Push Notification and/or by SMS in case that the gate fails to open or close.



You can find details on how to connect and configure the position limit switch(es) in the GSM Gate Control Pro 20/1000 installation and application manual.

The open and closed states of the position limit switch(es) and thereby of the gate(s) are represented in the application by the "lockpad" icon. The opened red lockpad means that the gate is open, while the closed black lockpad means that the gate is closed.

5 The right side menu



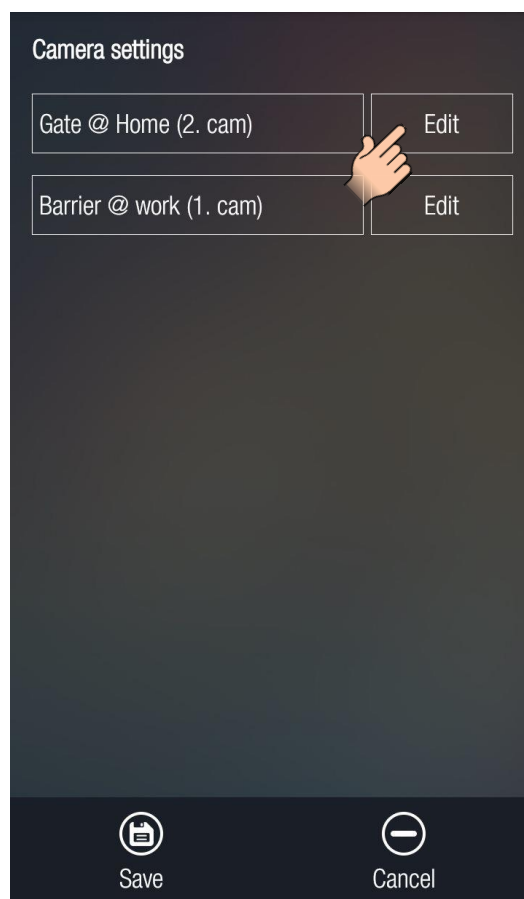
The “**New control button**” option helps you return to the assignment page, if you wish to add a new control button by sending an assignment request by Push notification over the internet or by SMS.

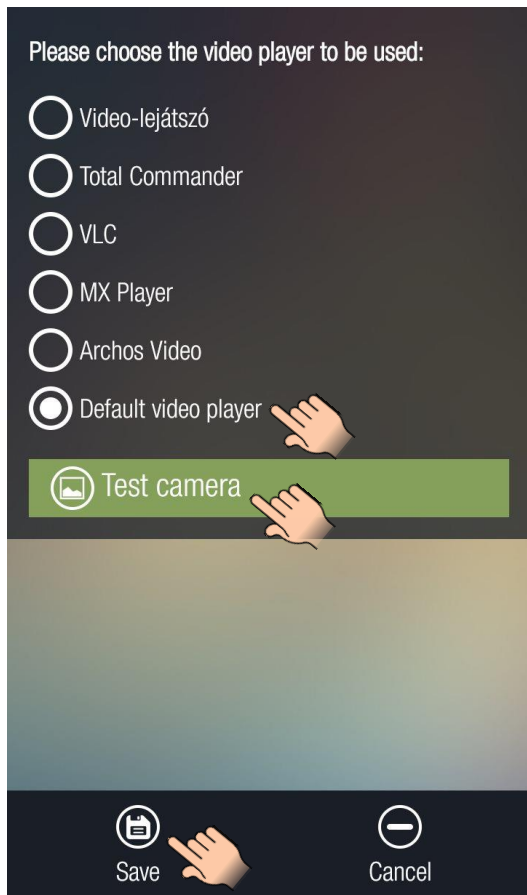
The “**Settings**” option allows for changing the application’s settings, e.g. you can configure a password, change the background picture, change the settings of the assigned ONVIF cameras, select the language of the user interface, choose the color for selected items (appearance) and for the control buttons. To save the changes tap the “**Save**” button.

If you enable the “**Password**” option, you can enter a password which will be requested each time when opening the application. The application cannot be opened if the wrong password is entered.

If you have more than one control button on the main screen, you can reorder the control buttons in the section below the color settings. To change the order, select the object to be moved by keeping your finger on it, then use the buttons marked with up and down arrows to move the selected object.

The “**Camera settings**” option allows for changing the settings of the ONVIF cameras assigned to the **Gate Control Pro** device(s). The list shows only the objects to which a video stream, i.e. rtsp URL has been assigned. To change the settings, tap the “**Edit**” button of the camera you wish to edit.



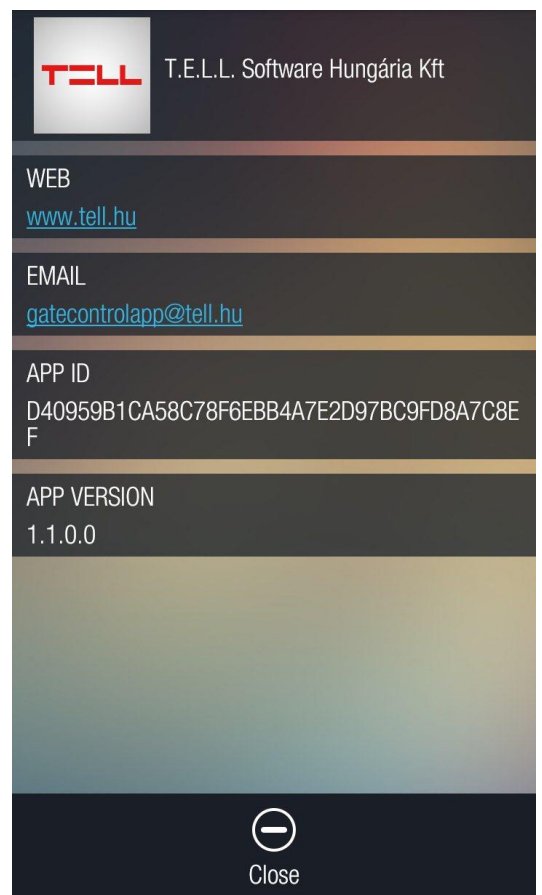


On this page you can choose the video player to be used for playing the camera stream, as well as you can test the camera with the selected video player. The application lists the video players available on the given smart device.

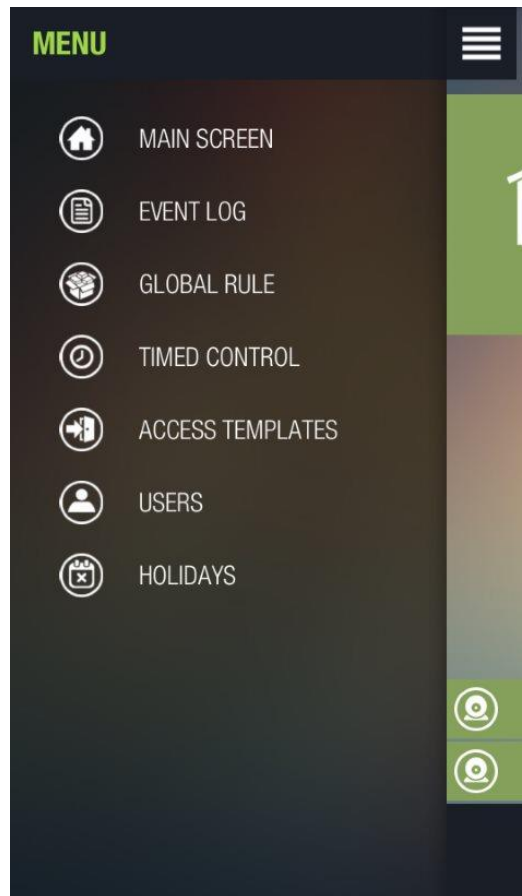
Select the desired video player, then tap the “**Test camera**” button. If the camera works properly with the selected player, you can save the settings by tapping the “**Save**” button, otherwise please choose another video player and repeat the test.

By tapping the “**About**” option, the availabilities of the manufacturer and information related to the application is shown.

APP ID: the individual identifier of the application which is used by the system to identify the smart device on which the application is used.



6 The left side menu

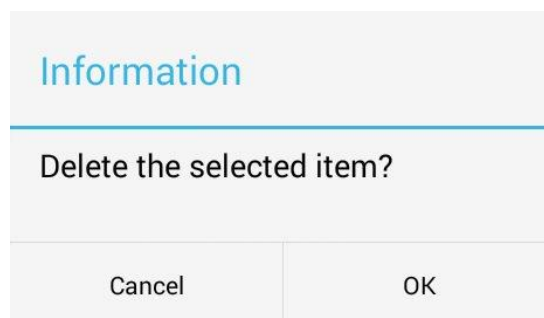


- **Writing, modifying, deleting**

Writing will be discussed separately in the next chapters.

The “**Modify**” option makes possible in each case modification of some properties of one element selected from the list loaded on the interface, which can be finally saved using the “**Save**” button.

The “**Delete**” option makes possible deleting the element selected on the interface. When deleting an element, a confirmation window pops up as shown in the picture below.



- **Settings**

Detailed description about the settings and parameters available within the menu items of the left side menu you can find in the **GSM Gate Control Pro 20/1000** installation and application manual.

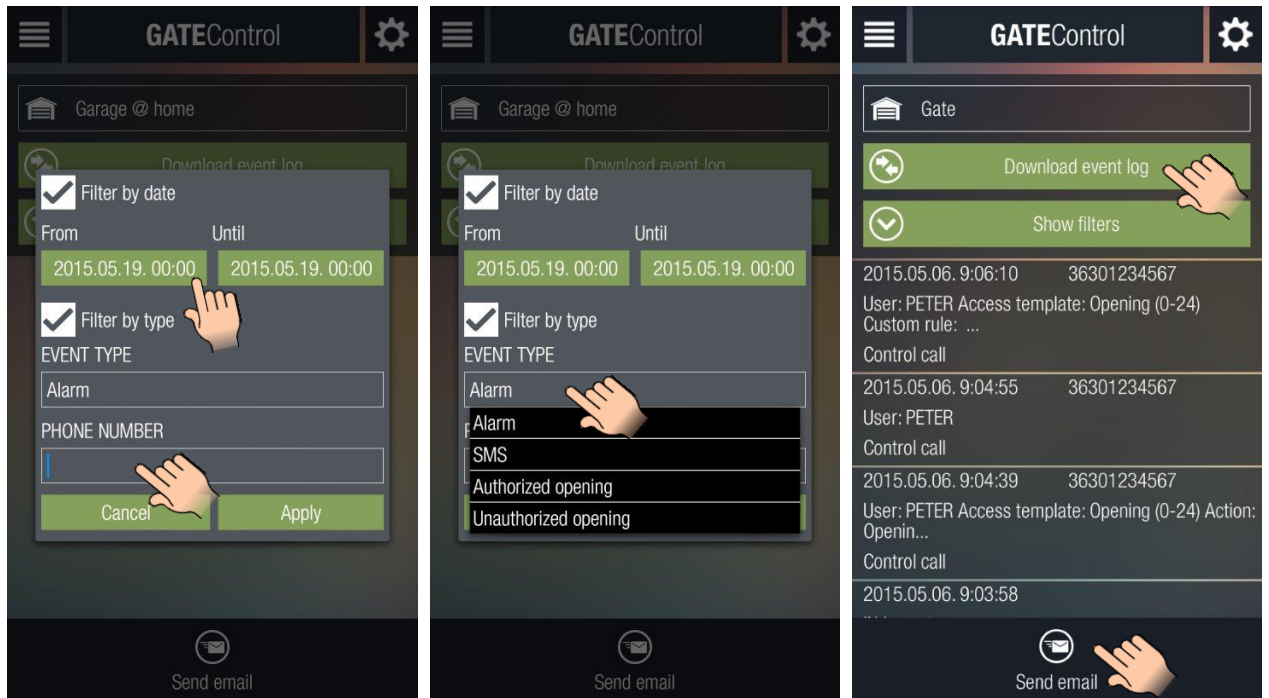
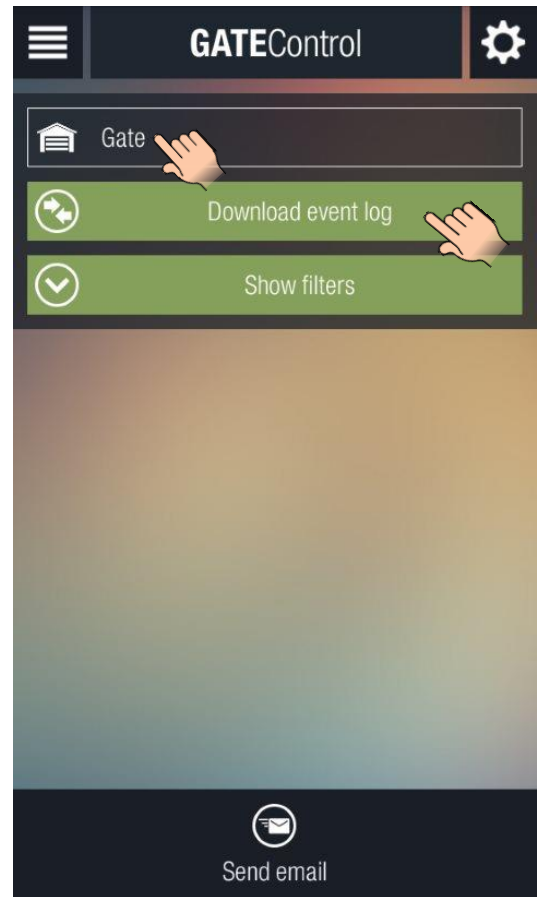
6.1 Event log

Makes possible downloading and filtering the data stored in the event log.

The drop-down menu at the top contains the **GSM Gate Control Pro** devices assigned to the application and this is where you can select from which one you wish to download the event log. If the program detects after selecting the device that in the meantime the user's permissions have changed for the given **GSM Gate Control Pro** (have been changed with an(other) administrator level smartphone application or with the PC programming software) and therefore this page should not be available any longer, the program cancels the process and displays the main screen.

By tapping the “**Download event log**” button the entire event log will be downloaded and displayed as a list.

By tapping the “**Show filters**” button you can filter the events by date, event type (alarm, SMS, authorized or unauthorized opening) or by user phone number. The filter can also be used if you do not download the entire event log. In this case only the events matching the filter criteria will be downloaded.



The first two pictures above show the interface of the filters while the last one shows a downloaded event log.

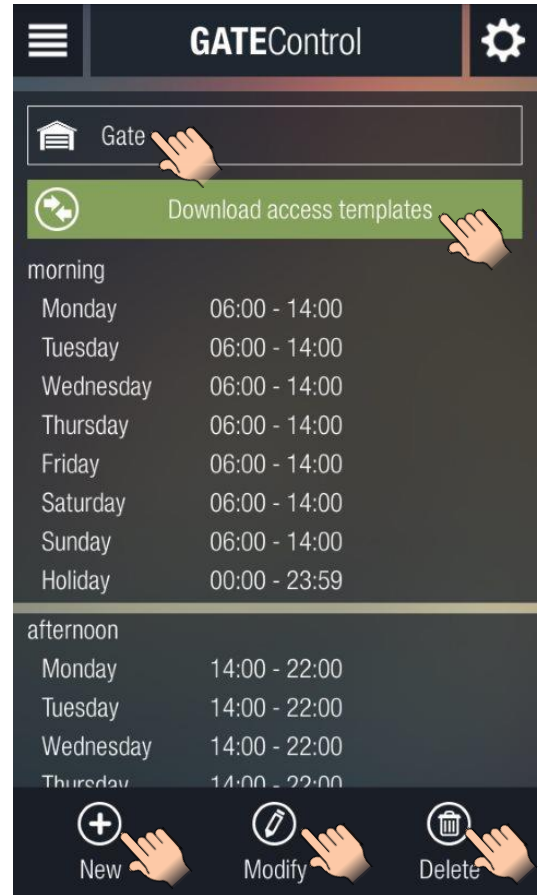
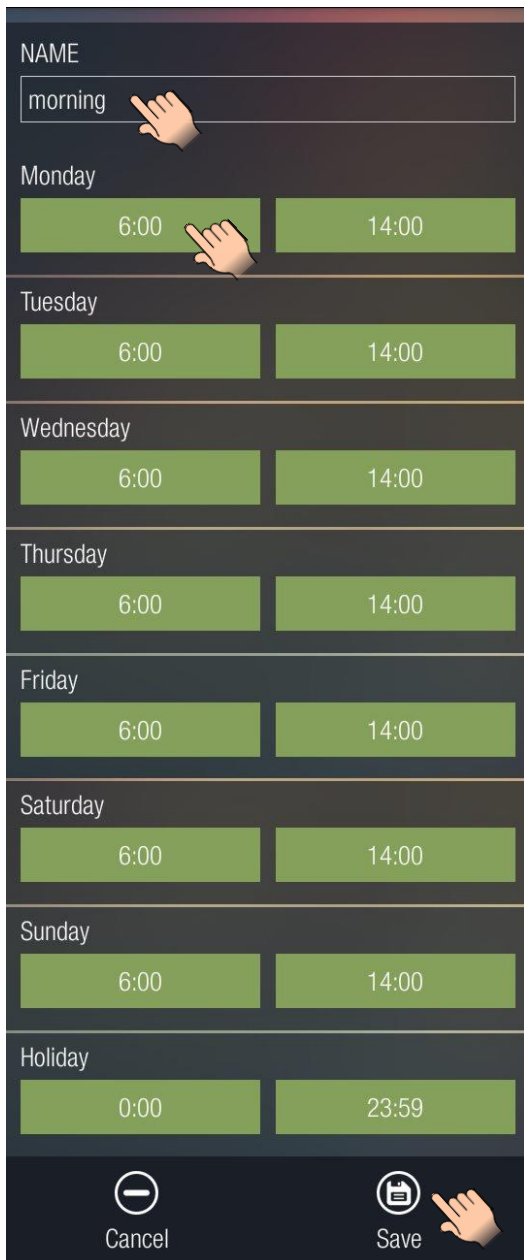
If you tap the “**Send email**” button, you can send the downloaded event log by email using the emailing application of your smart device.

6.2 Access templates

Makes possible downloading the access templates, adding new templates and modifying or deleting existing templates.

The drop-down menu at the top contains the **GSM Gate Control Pro** devices assigned to the application and this is where you can select from which one you wish to download the access templates. If the program detects after selecting the device that in the meantime the user's permissions have changed for the given **GSM Gate Control Pro** (have been changed with an(other) administrator level smartphone application or with the PC programming software) and therefore this page should not be available any longer, the program cancels the process and displays the main screen.

The access templates can be downloaded by tapping the **"Download access templates"** button.



To add a new access template tap the **"New"** button. When adding a new template, it is mandatory to enter a name for the template in the **"NAME"** section. The template name should not exceed 15 characters.

Attention! The following characters should not be used:
~ ^ < > = ' " , | \$ &

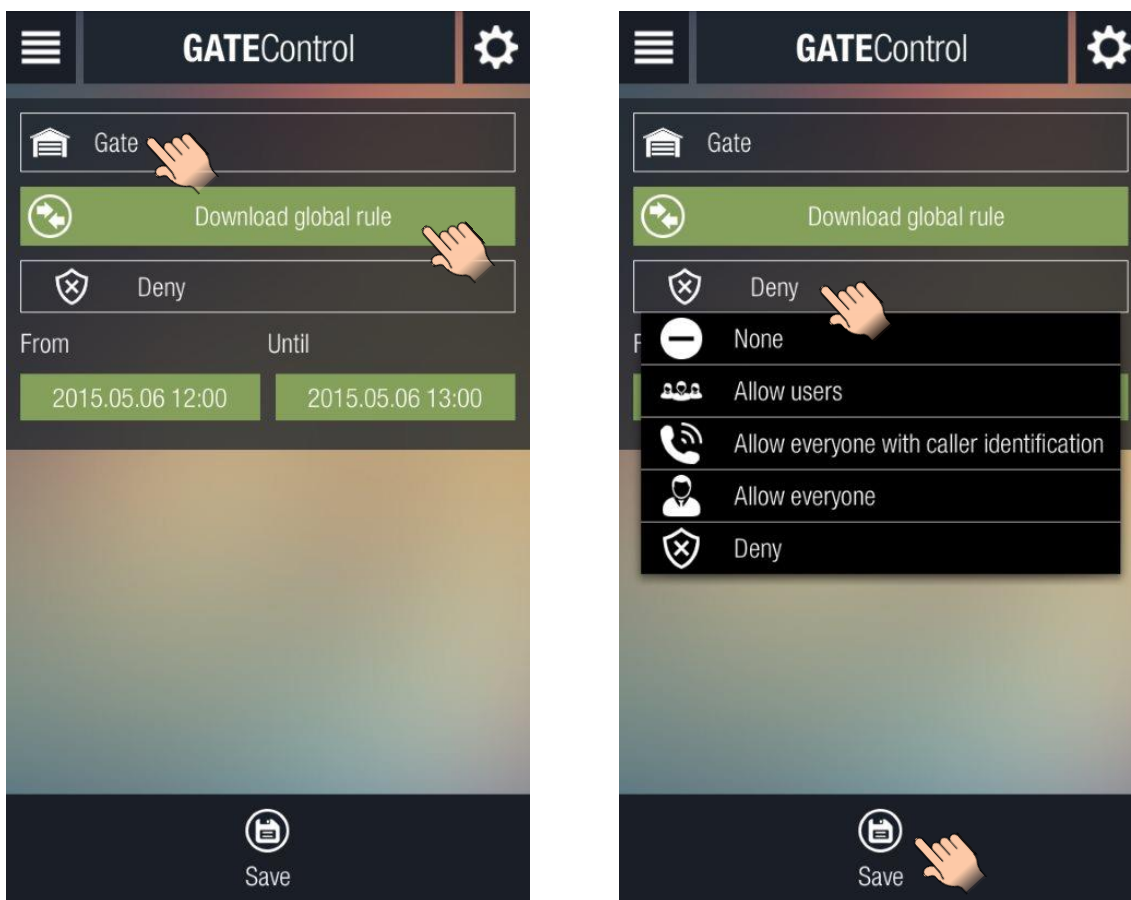
The new template can be saved by tapping the **"Save"** button.

To modify a template tap on the template to select it, then tap the **"Modify"** button. To save the changes tap the **"Save"** button. The interface will be similar to the one when you add a new template, but the current values of the template to be modified will be loaded in the appropriate sections.

To delete a template tap on the template to select it, then tap the **"Delete"** button.

6.3 Global rule

Makes it possible to download and change the global rule settings.



The drop-down menu at the top contains the **GSM Gate Control Pro** devices assigned to the application and this is where you can select from which one you wish to download the global rule settings. If the program detects after selecting the device that in the meantime the user's permissions have changed for the given **GSM Gate Control Pro** (have been changed with an(other) administrator level smartphone application or with the PC programming software) and therefore this page should not be available any longer, the program cancels the process and displays the main screen.

When tapping the "**Download global rule**" button, the actual global rule settings will be downloaded and updated on the user interface.

To change the global rule settings select the desired rule from the drop-down menu, select the start and end date and time in the "**From**" and "**Until**" sections, then tap "**Save**" to save the changes.

6.4 Timed control

Makes possible downloading the automatic timed control templates, adding new templates and modifying or deleting existing templates.

The drop-down menu at the top contains the **GSM Gate Control Pro** devices assigned to the application and this is where you can select from which one you wish to download the timed control templates. If the program detects after selecting the device that in the meantime the user's permissions have changed for the given **GSM Gate Control Pro** (have been changed with an(other) administrator level smartphone application or with the PC programming software) and therefore this page should not be available any longer, the program cancels the process and displays the main screen.

The timed control templates can be downloaded by tapping the **“Download timed controls”** button.

To add a new timed control template tap the **“New”** button. When adding a new template, it is mandatory to enter a name for the template in the **“NAME”** section. The template name should not exceed 15 characters. Attention! The following characters should not be used: `~ ^ < > = ' " , | $ &`

In case of using a two-gate control mode (mode 1 or 2), it can be configured using the checkboxes below the template name, which output to be controlled by the automatic timed control function (Output 1, Output 2 or both).

The new template can be saved by tapping the **“Save”** button.

To modify a template tap on the template to select it, then tap the **“Modify”** button. To save the changes tap the **“Save”** button. The interface will be similar to the one when you add a new template, but the current values of the template to be modified will be loaded in the appropriate sections.

To delete a template tap on the template to select it, then tap the **“Delete”** button.

6.5 Users

Makes possible downloading the user list, adding new users and modifying or deleting existing users.

The drop-down menu at the top contains the **GSM Gate Control Pro** devices assigned to the application and this is where you can select from which one you wish to download the user list. If the program detects after selecting the device that in the meantime the user's permissions have changed for the given **GSM Gate Control Pro** (have been changed with an(other) administrator level smartphone application or with the PC programming software) and therefore this page should not be available any longer, the program cancels the process and displays the main screen.

NAME
PETER

PHONE NUMBER
36301234567

RECORDER
Szoftver

PERMISSION
Administrator

TEMPLATES

morning

afternoon

night

Callback requested

SMS response requested

Camera 1

Camera 2

Output 1

Output 2

Output 1 by phone call

Output 2 by phone call

Push notification (doorbell)

Push notification (technical error)

Push notification (gate limit error)

SMS notification (gate limit error)

CUSTOM RULES
None

AUTHORIZER

From 0001.01.01 00:00 Until 0001.01.01 00:00

Save Cancel

The user list can be downloaded by tapping the **"Download users"** button.

To add a new user, tap the **"New"** button.

Entering a user name in the **"NAME"** section is mandatory. The user name should not exceed 40 characters. The user name is case sensitive.

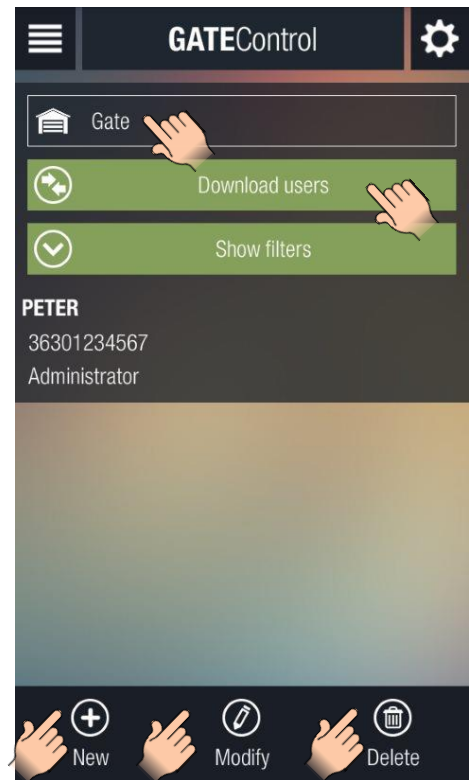
Attention! The following characters should not be used:
~ ^ < > = ' " , | \$ &

The new user can be saved by tapping the **"Save"** button.

To modify a user tap on the user to select it, then tap the **"Modify"** button. To save the changes tap the **"Save"** button. The interface will be similar to the one when you add a new user, but the current settings will be loaded in the appropriate sections.

To delete a user tap on the user to select it, then tap the **"Delete"** button.

The **"Show filters"** option can be used to filter the user list by username, phone number, access template or by custom rule. The filter can also be used if you do not download the entire user list. In this case only the users matching the filter criteria will be downloaded.



The picture above shows the modification page of a user, while the one on the right shows the interface of the filters.

6.6 Holidays

Makes it possible to download the configured holidays, add new holidays or delete existing ones.

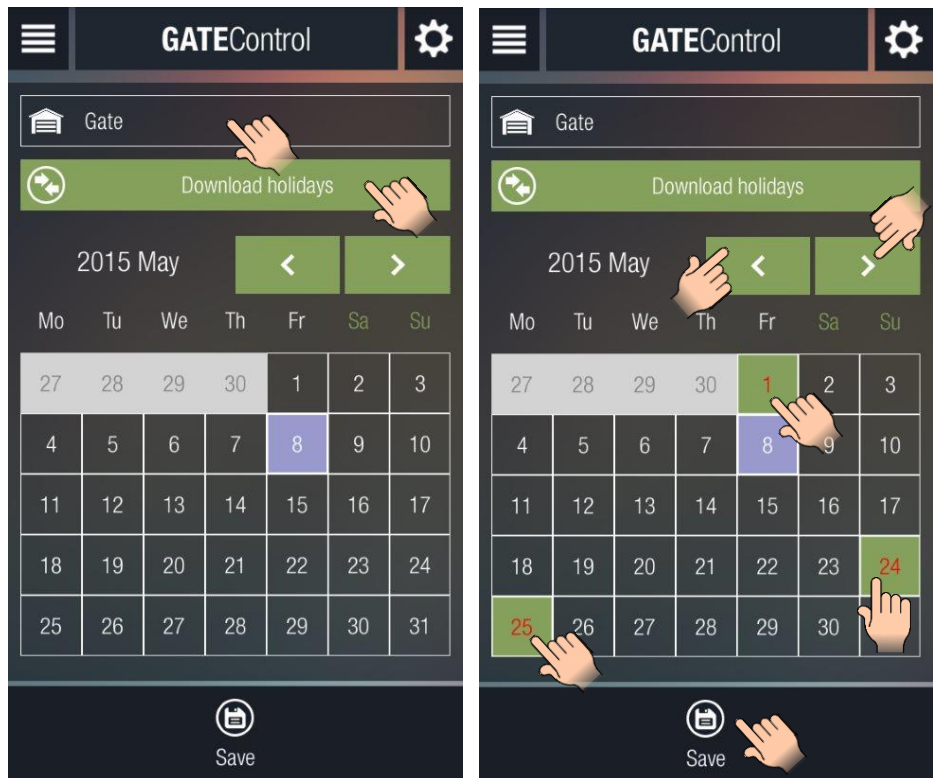
The drop-down menu at the top contains the **GSM Gate Control Pro** devices assigned to the application and this is where you can select from which one you wish to download the holidays. If the program detects after selecting the device that in the meantime the user's permissions have changed for the given **GSM Gate Control Pro** (have been changed with an(other) administrator level smartphone application or with the PC programming software) and therefore this page should not be available any longer, the program cancels the process and displays the main screen.

By tapping the **"Download holidays"** button the configured holidays will be downloaded and displayed in the calendar with a different color than the other days.

Adding or deleting holidays can be done by selecting or deselecting the desired days and saving by tapping the **"Save"** button.

If you wish to add a day as holiday, select it, or if it was selected, leave it selected. If you wish to delete a holiday, deselect it. Save when finished.

You can navigate in the calendar between the months of the year using the buttons marked with right and left arrows.



7 Differences between platforms

The application was designed to be similar on the 3 platforms, however, in are some cases there might be minor differences in usage or appearance.

1. The calendar component is a bit different on each platform, but regarding the functionality each version operates similarly.
2. For iOS unfortunately there is no "back" button, therefore if you wish to return to the previous screen, you have to use the **"Cancel"** button.
3. Certain control components
 - a. Date selectors
 - b. Drop-down menus
 - c. Time selectors
4. Menu operation
5. Event query
 - a. Double tapping
 - b. Single tapping
 - c. Dragging
6. Pop-up windows
7. Loading screens
8. Navigation (back/return)