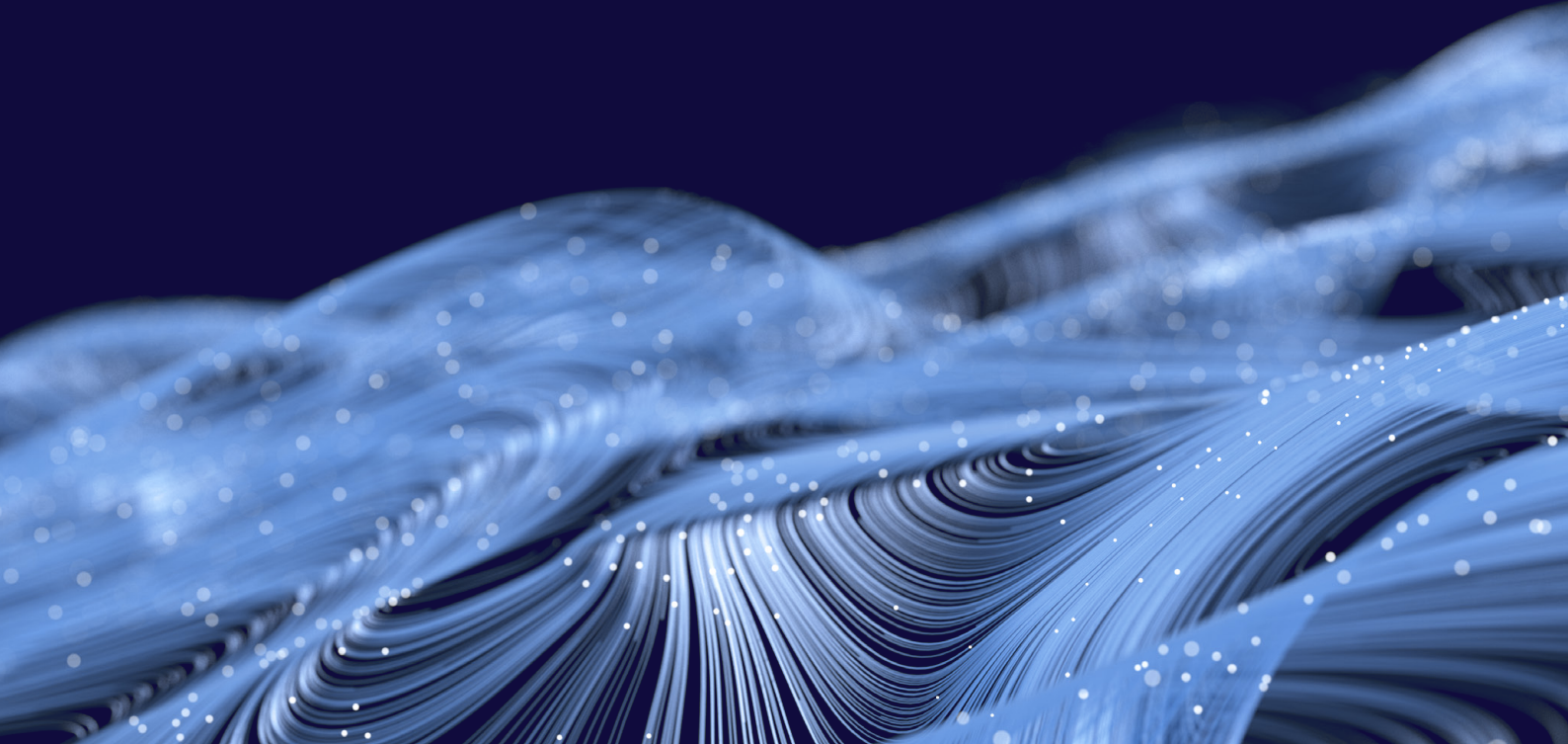




Sense  
**Anywhere**  
SIMPLY SMARTER



# TURN KEY MONITORING SOLUTION



Measure  
temperature



Measure  
humidity



Track  
motion



Secure & Redundant  
Cloud storage



Anytime accessible  
from any smart device



Alarm users  
if necessary

*SenseAnywhere*, a leading manufacturer of wireless data loggers for pharmaceutical products and cold chain distribution, has developed a next generation of long battery life sensors able to last up to ten years and to accurately track temperature, humidity and motion.

# APPLICATIONS



○ PHARMA



○ COLD CHAIN



○ MAPPING



○ LABORATORY



○ FOOD

# FEATURES

---



## Alarms

Receive notifications per email, SMS or through voice when limits are exceeded



## Real-time

24/7 monitoring gives you a complete audit trail of your products



## Seamless Roaming

Automatic network discovery, no pairing required



## Security

Wireless communication is a secure 2-way communication



## Ultra-low power

Our unique and efficient wireless protocol allows you to receive >1 million measurements in the Cloud; the battery lasts for 10 years



## Interactive display

By scanning the devices unique QR code you can immediately view your data in the Cloud

# WHAT MAKES US UNIQUE?

## Easy to install



Register + connect = ready!



Fast installation



No cables or software

## Easy to use



Cloud based



For all industries



Accessible from any device

## Easy to maintain



Lifetime battery



Automatic back-ups



No maintenance required

*SenseAnywhere* data loggers are also perfectly suited for replacing USB loggers in shipments. They are always on and collect and transfer data automatically without the need of human intervention. This means there is no training of staff needed, eliminating the risk of human error.



# HOW IT WORKS

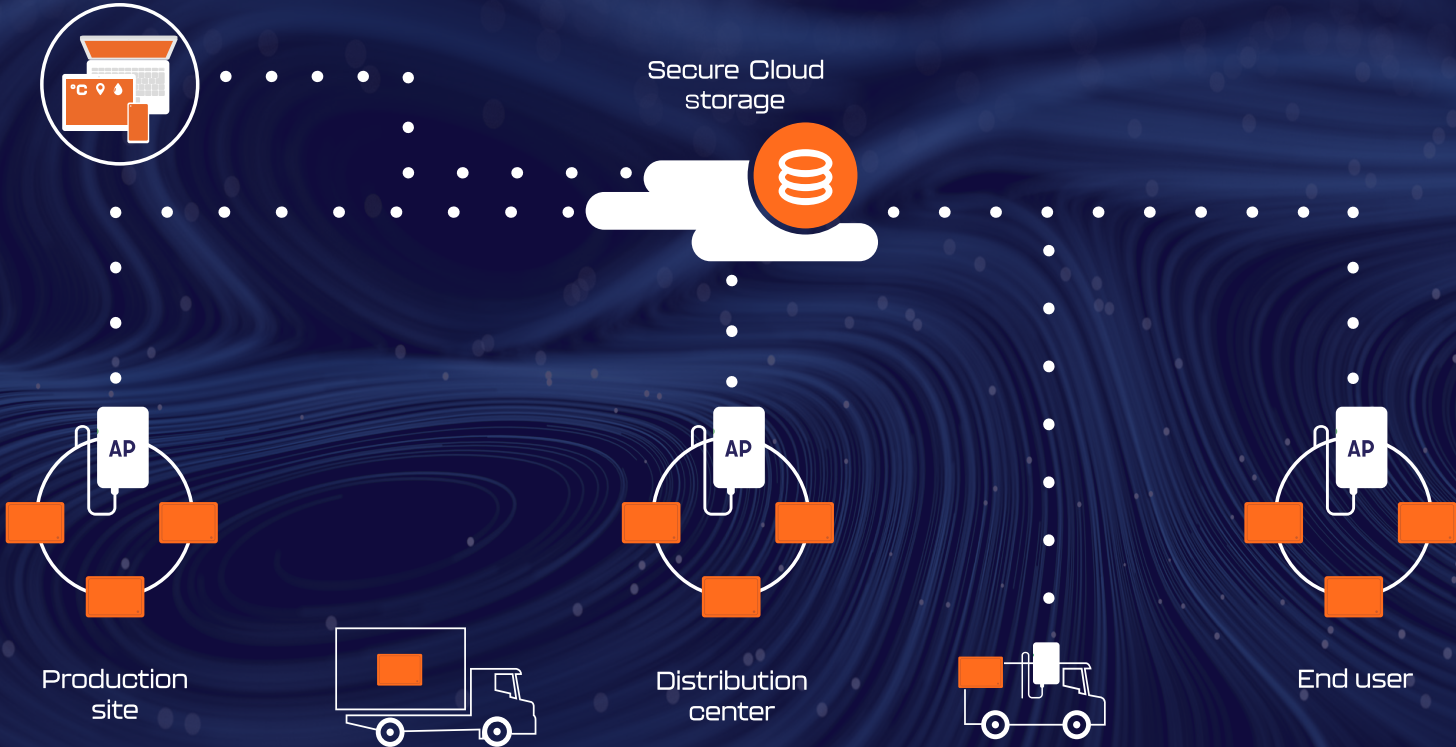


Our data loggers discover an AccessPoint automatically and send data to our secure Cloud database. The data collected can be accessed by the user from any smart device at anytime and anywhere.

You can access data and edit the settings of your data loggers in the [SenseAnywhere](#) Client portal. Our software and data storage are FDA Compliant and the software is continuously being extended with features.

In the portal you are able to: manage settings, view graphs and data, set alarm profiles, schedule and download reports and many more.

# THE BIG PICTURE



# OUR PRODUCTS

## AiroSensor

- Monitor temperatures between  $-40^{\circ}\text{C}$  and  $+70^{\circ}\text{C}$
- Highly accurate measurements ( $\pm 0.10^{\circ}\text{C}$ )
- Humidity range: 0 - 99% RH, non-condensing

The **AiroSensor** is ideal for use in freezers, cool boxes, refrigerators, cool trailers, incubators and lab or storage rooms.



## AiroSensor with Pt100

- Monitor ULT from  $-200^{\circ}\text{C}$  to  $+200^{\circ}\text{C}$
- Ideal for monitoring cryogenic applications
- Pt100 module can be calibrated as an individual device

The **Pt100 probe** is specifically designed for use in ultra-low temperature environments.





# OUR PRODUCTS

## Input Modules

- Limitless measurement possibilities
- Transforms analogue measurements into digital data
- Real-time digital measurements with alarm functions
- Can be calibrated as individual device
- Connected to AiroSensor 20-20-43 and third-party sensors



## Temp+RH and Temp Only Modules

- Perfect fit for dynamic environments
- Validation measurements
- Reference measurements
- Fits narrow locations with poor internet connection
- Accurate temperature and relative humidity monitoring
- Meets the highest accuracy class (0.2°C) of the EN1230:2018 standard

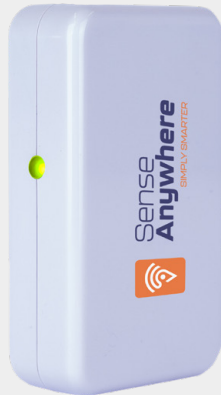


# OUR PRODUCTS

## AccessPoint

Indoor/ Outdoor

- Connects AiroSensors to SenseAnywhere's Cloud infrastructure
- Seamless roaming enables AiroSensors to connect to the AccessPoint automatically and without pairing
- Safe and encrypted two-way data communication
- Reliable plug and play device
- No limits to the number of AiroSensors



## Mobile AccessPoint

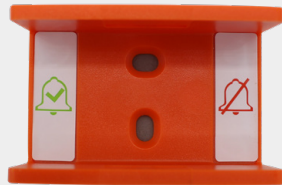
- Connects AiroSensors to SenseAnywhere's Cloud service at remote locations without stable internet connections
- Real-time data when in transport
- When connecting to a local network is not desired
- Connectable to 2G, 3G and 4G networks
- No limits to the number of AiroSensors



# OUR PRODUCTS

## SwitchHolder

- With the SwitchHolder, you can generate transport alarms
- Enable/disable transport alarms by turning SwitchHolder to on/off
- Compatibility: AiroSensor models 20-20-2x, AiroSensor models 20-20-3x
- Perfectly suitable accessory to monitor medical samples during cold chain distribution



## AssetTag

- Hot Swapping to easily replace data logger
- Data loggers can be switched at any time
- Complete Temp/RH history of assets without any monitoring-gaps
- No reconfiguration needed (alarms, reports etc.)
- Complete audit trail
- You can set up alarms, generate reports and view charts



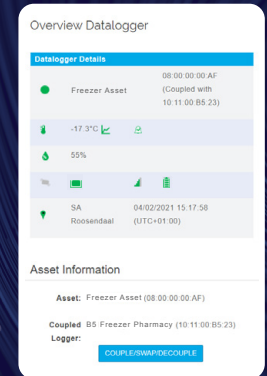
# ASSET TAGGING



Refrigerator  
with AssetTag



Scan the  
QR code



Overview data

Asset tagging prevents the occurrence of monitoring-gaps when your data loggers are sent to the lab for recalibration.

Scan the AssetTag QR code and get direct access to temperature/RH data! See the state of the asset and see which device is attached.

# HOW DOES THE ASSETTAG WORK



AssetTag card



QR code on refrigerator



Swappen



Barcode



AssetTag barcode on holder



Freshly calibrated logger



To be recalibrated logger



# TRANSPORT ALARMS

**SenseAnywhere** offers three types of automatic transport alarms, which can be used under different circumstances. These alarms ensure that your goods are kept in the right conditions at all times, guaranteeing the quality of sensitive products.

## Routes

- You need a designated AccessPoint at the beginning and end of the route so that the data logger, when it reaches its destination, shows when alarm parameters are exceeded.

## SwitchHolder

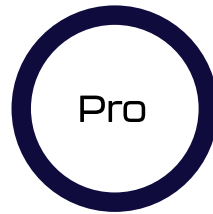
- If no designated AccessPoints are available, the SwitchHolder offers a perfect solution for generating transport alarms on route. The transport alarm can be started by sliding the AiroSensor in the SwitchHolder to "on" and be disabled by sliding the AiroSensor to "off".

## QR Scan

- If you are using a sealed box where the logger is not accessible after packaging, the SwitchHolder is not an option. QR transport can be used in these situations. By scanning the QR code, alarms can be enabled or disabled from outside the box.



# SUBSCRIPTIONS



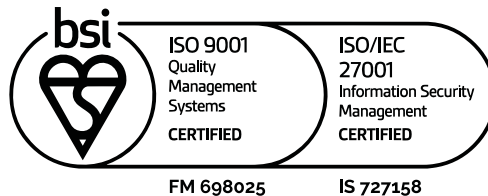
## MOST POPULAR

## BEST VALUE

- ✓ Web-based software
- ✓ Cloud-based infrastructure
- ✓ Data storage period 5 years
- ✓ Scheduled reports
- ✓ 10 users
- ✓ Replicate read-only database
- ✓ FDA 21 CFR part 11 compliant

- ✓ Standard subscription features
- ✓ Generate reports on demand
- ✓ Data storage period 10 years
- ✓ Scheduled alarm profiles
- ✓ 25 users
- ✓ Transport alarm: trip ok/not ok
- ✓ Full Audit Trail

- ✓ Standard+Pro subscription features
- ✓ Hierarchical divisions
- ✓ Data storage period 15 years
- ✓ 5 alarm profiles per logger
- ✓ Unlimited users
- ✓ Events Webhook (Push API)
- ✓ Complete Enterprise overview



# QUALITY

## Quality is key at SenseAnywhere:

- SenseAnywhere is ISO 9001 and ISO 27001 certified;
- We offer products and services that meet customer and regulatory requirements;
- Our system enables you to set up and implement a GxP compliant temperature monitoring solution;
- Our temperature data loggers meet the most stringent class of the EU regulation for data loggers EN12830:2018 accuracy class 0.2;
- Our AiroSensors have a battery life of 10 years;
- Our quality is continuously improved.



# SOFTWARE

---

Our software is validated, we follow the rules of GxP and we offer customers tools to become GxP compliant. Our Validation package contains a Design Qualification (DQ), Manufacturer Software Validation (MSV), Installation Qualification (IQ) and Operational Qualification (OQ).

## Reliability:

- Software is developed according to the GAMP5 rules;
- We comply with the requirements of FDA 21 CFR part 11;
- The communication of the data loggers as well as our portal have been penetration tested.



# DATA SECURITY

## Security with Microsoft Azure

The collected data is securely stored in one of the most advanced Cloud infrastructures: Microsoft Azure. The data is encrypted, stored in real-time and backed up every five minutes. Primary and secondary copies of the database are located on different servers in Europe, adding an extra layer of security. [SenseAnywhere](#) also provides data retention for up to 15 years.

### Highlights data storage:

- SLA uptime 99,99% of the database;
- Highly scalable;
- Replicate read-only database;
- Data centres located in Europe.





# SIMPLY SMARTER

---



We offer data loggers with a 10 year battery life, and our AiroSensors produce 30x less electronic and chemical waste during its 10 year life compared to third-party data loggers!

**SENSEANYWHERE** SIMPLY SMARTER

# CONTACT DETAILS



**SenseAnywhere B.V.**

Bergrand 218  
4707 AT Roosendaal  
The Netherlands



senseanywhere



@senseanywhere



info@senseanywhere.com



www.senseanywhere.com



+31 165560088

