



control solutions

TERACOM

TCW220

Ethernet data logger



Overview

TCW220 is an Ethernet data logger for general data acquisition applications.

Its analog inputs, with 10-bit resolution, can be used for monitoring of 0-10 V and 4-20 mA sensors. Digital „dry contact“ inputs can monitor discrete detectors – door sensor, smoke detector, AC voltage presence etc.

TCW220 supports up to 8 TERACOM 1-Wire sensors for temperature, humidity, carbon dioxide, 0-20mA, AC/DC current, etc.

The Ethernet data logger has 2 relays with normally open and normally close contacts.

All monitored parameters can be logged on previous set time interval and/or on alarm condition. In the internal nonvolatile memory can be stored up to 70000 records. Log file can be periodically uploaded to dedicated server by HTTP Post.

Applications

- **Environmental monitoring** – The device can monitor temperature, humidity, barometric pressure, CO₂ etc.
- **Server room monitoring** - The device can monitor AC power supply, smoke concentration, door opening, battery voltage, room temperature and control the cooling system.
- **Industrial process automation** – Monitoring of industrial sensors with 0-5 V, 0-10 V and 4-20 mA output.
- **M2M systems** - The device can send periodically information to monitoring server and execute its commands.
- **Data logging of facilities** - The device can log and display the measured data. It can be used as a standalone device or as a part of SCADA system.

Interfaces



100 Mbit
Ethernet



2x
Digital Inputs



0-10V
2x
Analog Inputs



2x
Relay Outputs



8x
1-Wire Sensors

Basic features

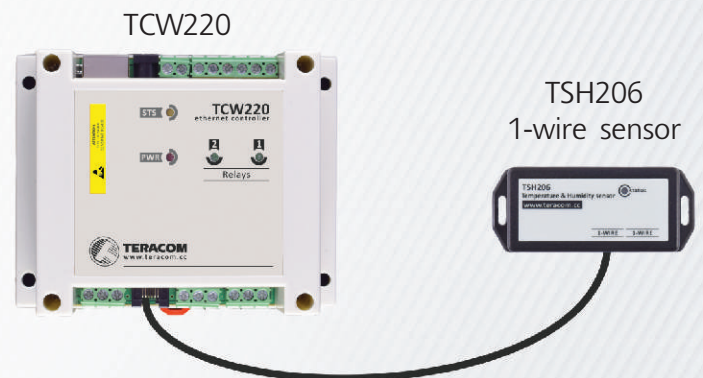
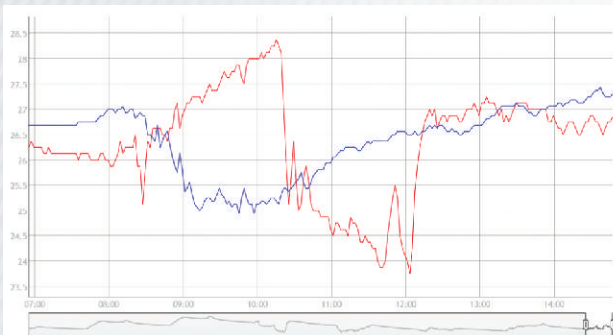
- Data Logger for 70000 records;
- Graphical view of logged data;
- Automatic upload of logged data in CSV format;
- MODBUS/TCP support;
- SMTP support for e-mail alert
- SNMP v2 support with trap alert;
- HTTP Post service with API commands;
- XML/JSON status report files;
- NTP protocol support configurations;
- Back-up/Restore of configurations



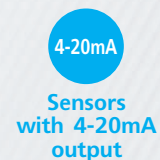
Short specification

Supply voltage, VDC	10 - 32
Maximum current (with all relays ON), mA	240 @ 12VDC
Weight, g	170
Dimensions, mm	115 x 90 x 40
Operating temperature, °C	-20 to + 55
Maximum humidity, %RH	70
Supply voltage for 1-Wire bus (VDD), VDC	5.0 ± 0.3
Maximum output current for 1-Wire bus (VDD), A	0.2
Analog inputs range, VDC	0 to 10
Analog inputs resolution, VDC	0.001
Analog inputs accuracy, %	± 1
Maximum switchable relay current, A	3
Maximum switchable relay voltage, VAC/VDC	42/60

Typical application



Supported sensors and detectors



Software

- TC Monitor
- TCW Control for Android
- TCW Control for iOS
- Third party software applications