



www.MIPonline.com

MIP Ball Diff Instruction Guide

| | | | |
|---|---|--|---|
|  <p>5mm x 9mm Bearing (x2) #00-442</p> |  <p>Spring Washer (x2) #20095</p> |  <p>3/64" Diff Ball (x7) #20095</p> |  <p>Diff Clamp Screw (x1) #20095</p> |
|  <p>2-56 Hex Nut (x1) #20095</p> |  <p>T-Nut (x2) #20091</p> |  <p>3/32" Diff Ball (x9) #20095</p> |  <p>Mini-T Diff Ring (x2) #20095</p> |
|  <p>Mini-T Diff Gear (x1) #20091</p> |  <p>Mini-T Outdrive Cup (x2) #20090</p> |  <p>Mini-T Diff Hub (x2) #20090</p> | |

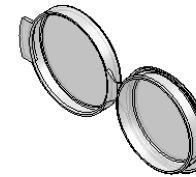


Apply MIP Lube



WARNING!!!
Chemicals in tubes may cause eye/skin irritation and can be harmful if swallowed. If it comes in contact with skin, wash with plenty of soap and water. If in eyes; Rinse with water for fifteen minutes. If irritation persists get medical advice.

For more information & SDS please visit:
www.miponline.com/store/sds.html



Apply MIP Silicone Grease Cup

© 2021
 Moore's Ideal Products, LLC
 830 W. Golden Grove Way
 Covina, CA 91722



MIP Ball Diff Instruction Guide



Use MIP Grease
(Yellow-Brown)

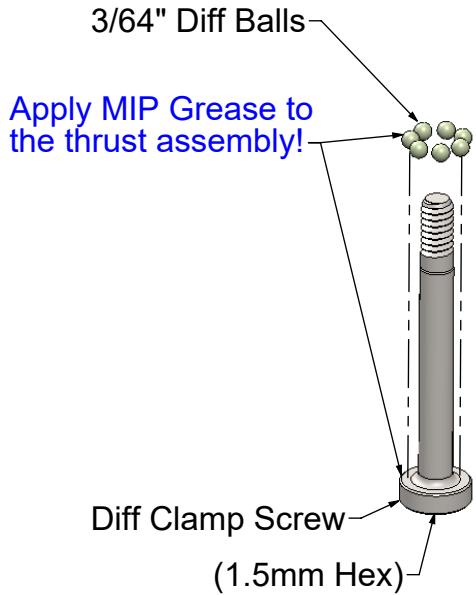


FIGURE: 1

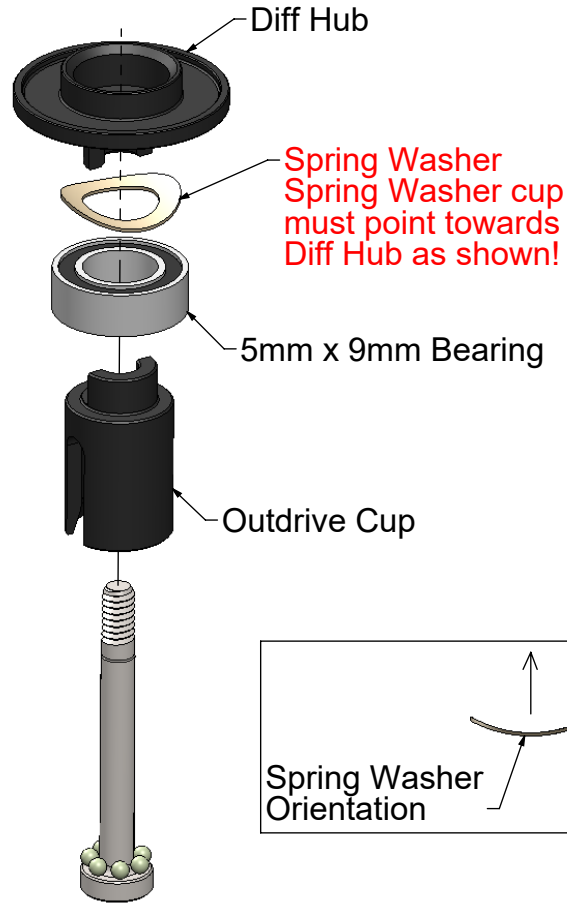
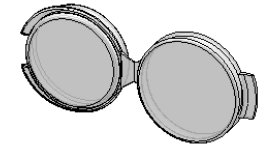


FIGURE: 2



Use MIP Silicone Grease
(Clear)

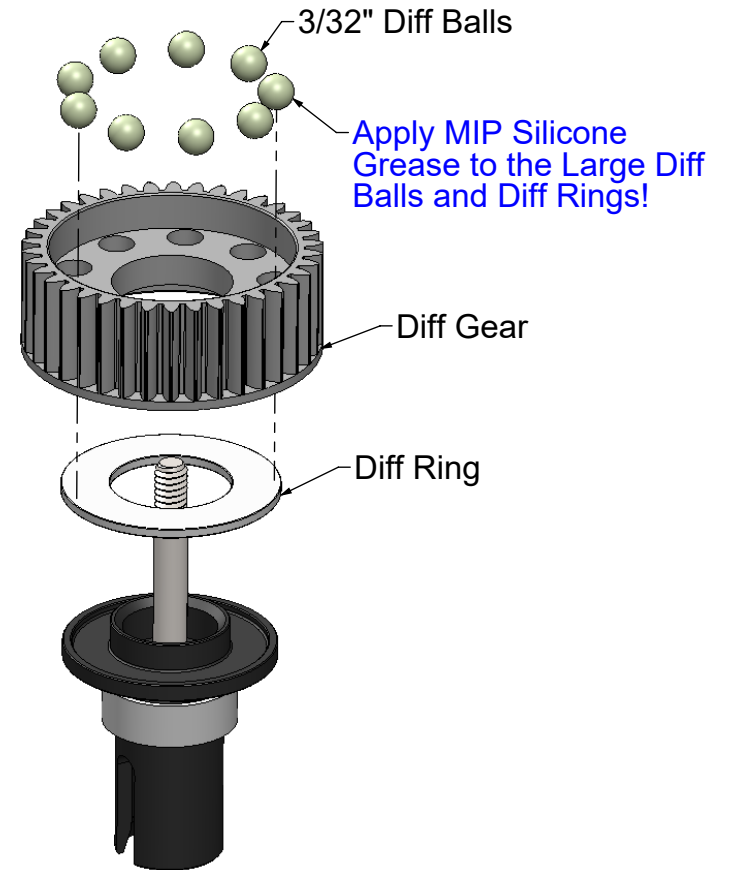
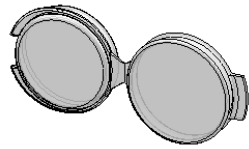


FIGURE: 3



www.MIPonline.com

MIP Ball Diff Instruction Guide



Use MIP Silicone Grease (Clear)

Apply MIP Silicone Grease to the Diff Rings!

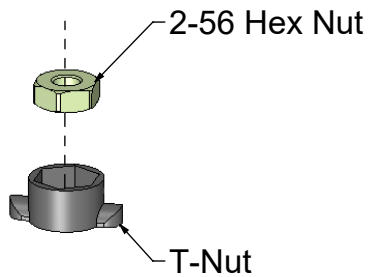
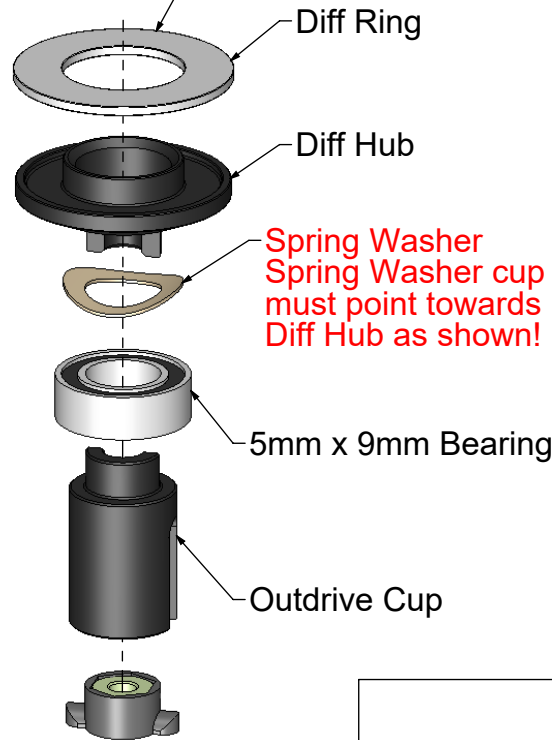


FIGURE: 4

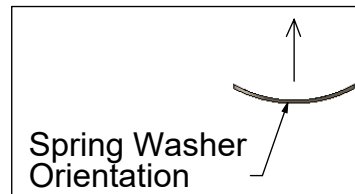
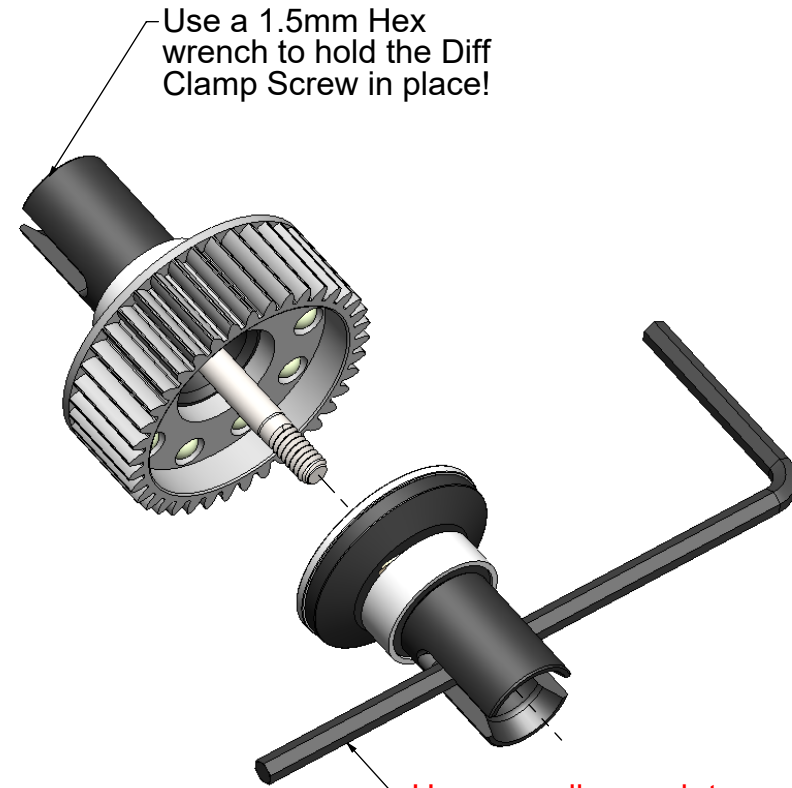


FIGURE: 5



Use a small wrench to hold T-Nut in place when assembling!
***NOT INCLUDED**

FIGURE: 6



www.MIPonline.com

MIP Ball Diff Instruction Guide

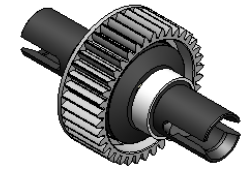


Figure: 1 Using the supplied "Yellow-Brown" grease, install the (7) 3/64" Diff Balls around the Diff Screw and set aside.

Figure: 2 Insert the Diff Clamp Screw through the Outdrive Cup, 5mm x 9mm Bearing, with the Spring Washer & Diff Hub

Figure: 3 Apply a small amount of "Clear" silicone grease to the Diff Ring and Diff Gear generously. Insert the (9) 3/32" Diff Balls into the Diff Gear and set aside.

Figure: 4 Insert the 2-56 Hex Nut into the T-Nut.

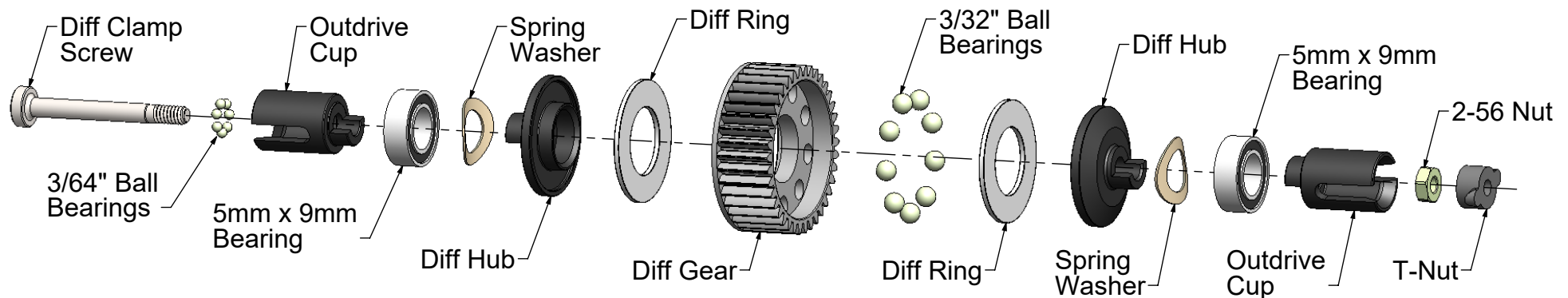
Figure: 5 Insert the T-Nut with 2-56 Nut facing into the Outdrive Cup with a 5mm x 9mm Bearing, Spring Washer, Diff Hub & a Diff Ring. Use a small amount of "Clear" silicone grease to hold the Diff Ring in place!

Figure: 6 Assemble the Diff as shown below using a 1.5mm hex wrench "not supplied" and a small wrench to hold the T-Nut in place.

NOTE: BE SURE SPRING WASHERS ARE FACING TOWARDS CENTER OF THE DIFF!!!

Insert the Clamp Screw with (7) 3/64" balls into the left side Outdrive Cup, through the diff, into the opposite Outdrive Cup. Key the assembled T-Nut into the empty Outdrive Cup. Be sure the flat of the Outdrive Cup is properly "Keyed" to the flats of the Diff Hub. **Tighten diff until Clamp Screw just bottoms out!!!** Back Clamp Screw out 1/4 to 1/2 turns for the initial diff setting.

WARNING! DO NOT run vehicle with the diff slipping excessively! Use MIP Grease's as instructed ONLY!



© 2021
Moore's Ideal Products, LLC
830 W. Golden Grove Way
Covina, CA 91722