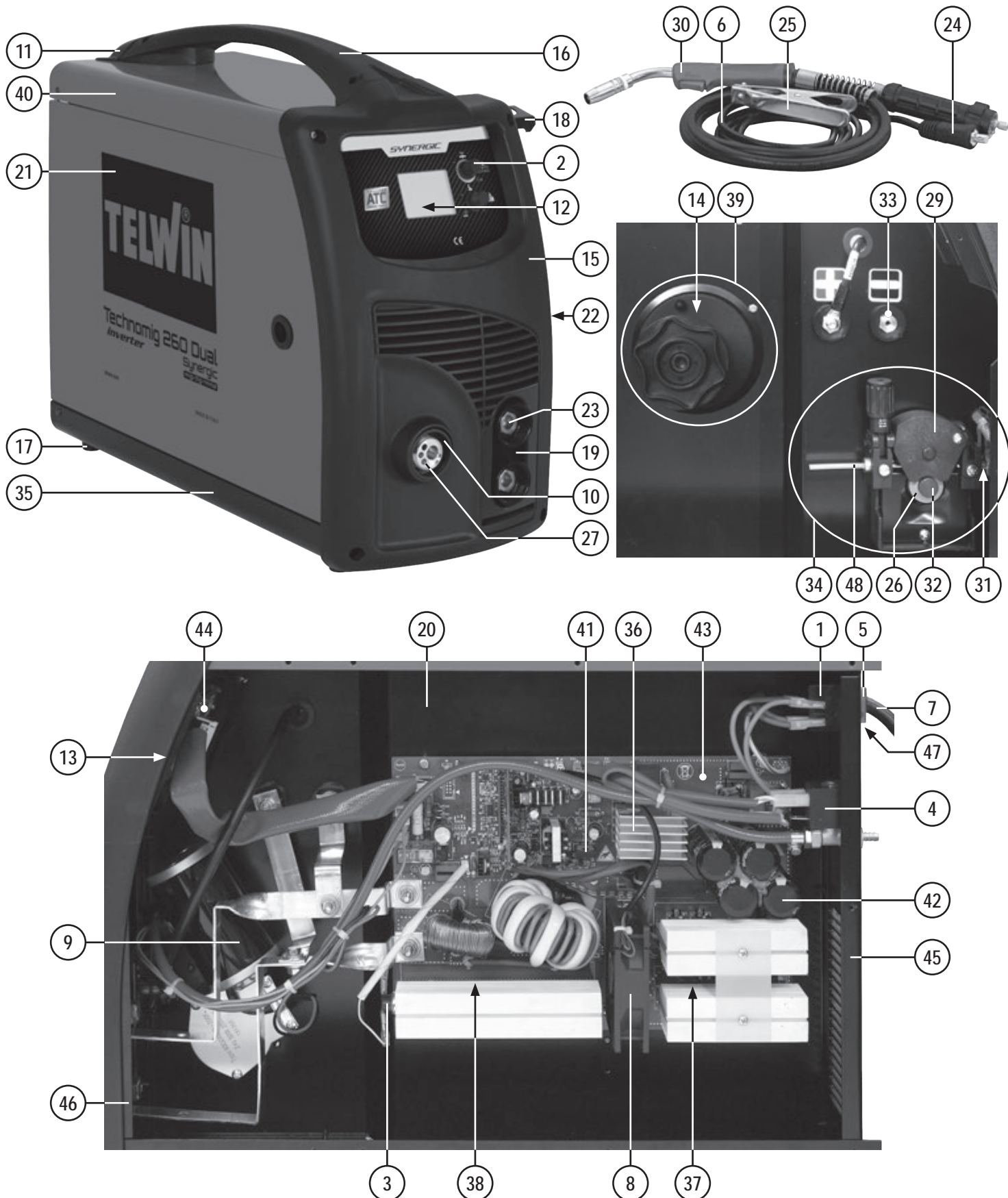


ELENCO PEZZI DI RICAMBIO
 LISTE PIECES DETACHEES
 SPARE PARTS LIST
 ERSATZTEILLISTE
 PIEZAS DE REPUESTO

TECHNOMIG 260 DUAL SYNERGIC



Esplso macchina, Dessin appareil, Machine drawing, Explosions Zeichnung des Geräts, Diseño seccionado maquina.

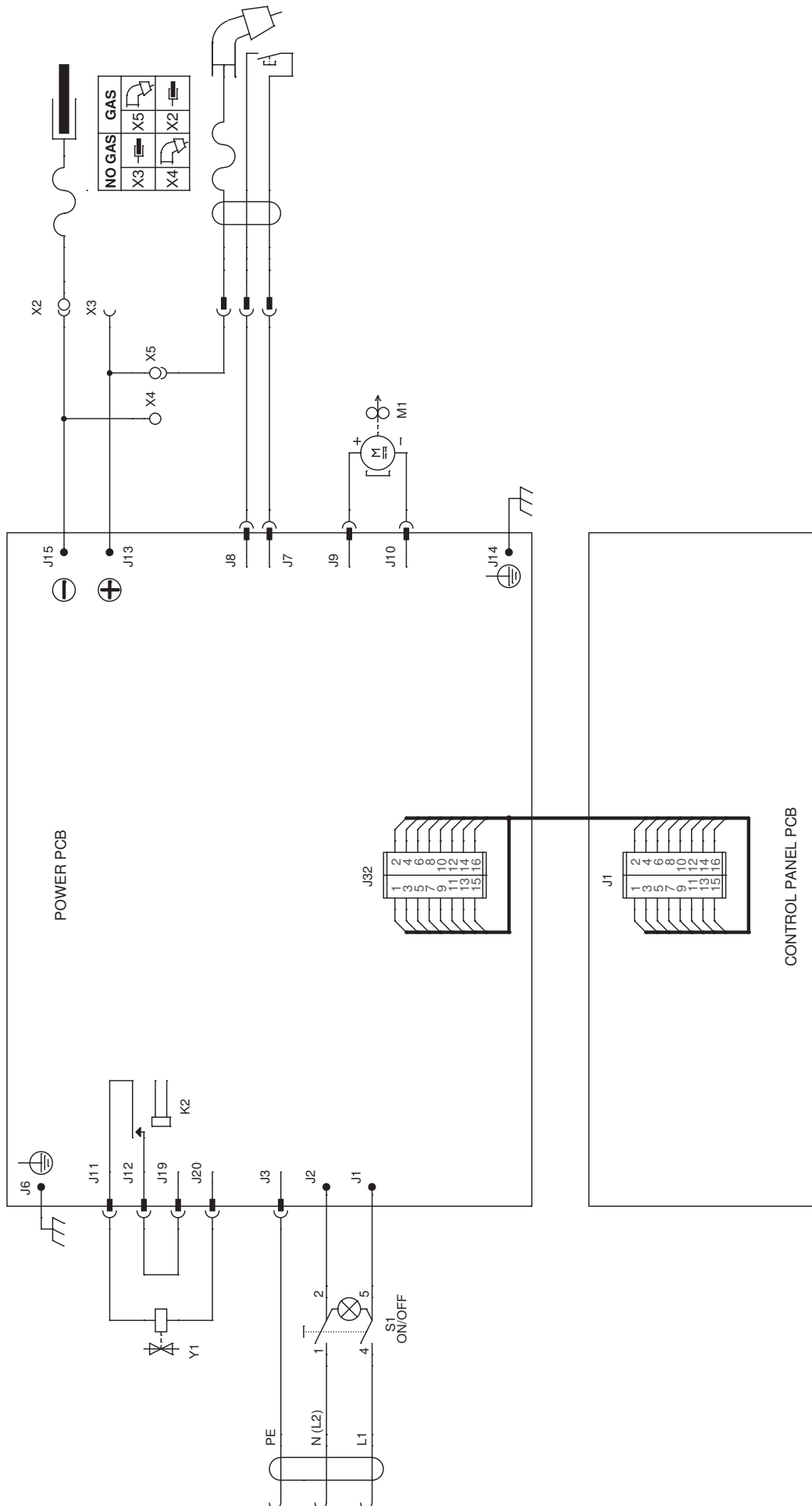


REF.	ELENCO PEZZI DI RICAMBIO PIECES DETACHEES SPARE PARTS LIST ERSATZTEILLISTE PIEZAS DE REPUESTO	CODICE CODE KODE
1	Interruttore Interrupteur Switch Schalter Interruptor	121248
2	Manopola encoder d.15 Poignee encoder d.15 Encoder knob d.15 Griff encoder d.15 Manija encoder d.15	121315
3	Termostato Thermostat Thermostat Thermostat Termostato	121748
4	Elettrovalvola Electrovanne Electrovalve Elektroventil Electrovalvula	121800
5	Copri interruttore Couvre interrupteur Switch cover Schalterdeckel Cubre interruptor	122353
6	Cavo Cable Cable Kabel Cable	124887
7	Cavo alim. 3g04.00 2.00 M Cable alim. 3g04.00 2.00 M Mains cable 3g04.00 2.00 M Netzkaebel 3g04.00 2.00 M Cable alim. 3g04.00 2.00 M	132345
8	Ventilatore Ventilateur Fan Ventilator Ventilador	152293
9	Motore Moteur Motor Motor Motor	153033
10	Protezione attacco torcia Support isolant torche Torch connection protection Brennersisolierlager Sosten isolator antorcha	312105
11	Copertura manico Capot poignee Handlecover Handgriffsdeckel Copertura manija	321142
12	Spessore per schermo Blindage Shield Schild Proteccion	321194
13	Supporto scheda Support fiche Card holder Kartehalter Sosten tarjeta	321196
14	Distanziale per aspo Entretoise pour support bobine Reel spacer Distanzstueck Espaciador por aspa	321210
15	Frontale Partie frontal Front panel Geraetefront Frontal	321215
16	Manico Poignee Handle Handgriff Manija	322883
17	Piedino Embout Foot Fuss Pie	323001
18	Gancio appendi torcia Accrocheur torche Torch hook Haken fuer brenner Gancho fijacion antorcha	645704
19	Supporto dinse Support dinse Dinse holder Dinse halterung Sosten dinse	645728
20	Diaframma Diaphragme Diaphragm Diaphragma Diafragma	645920
21	Sportello Guichet Door Tuer Portezucla	656253

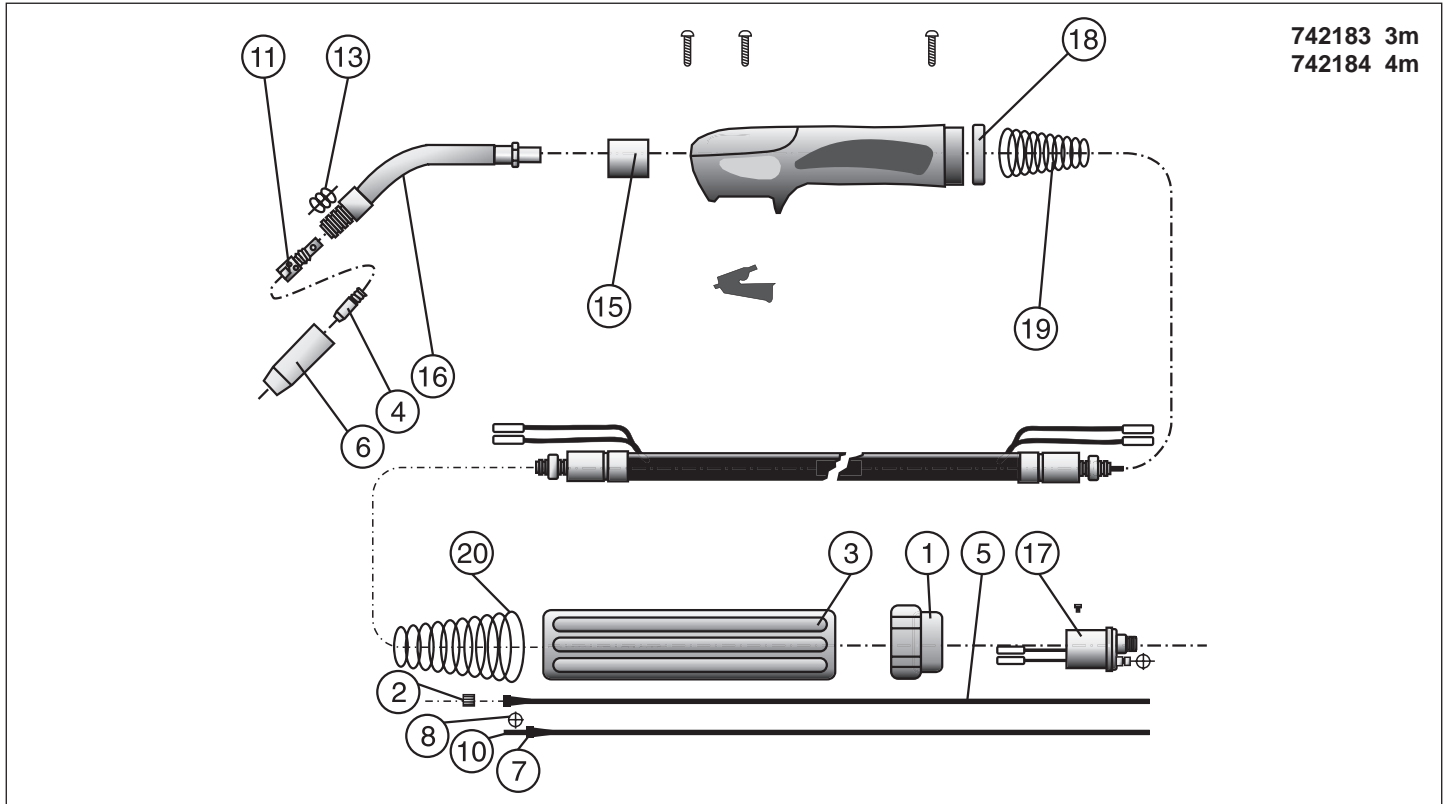
REF.	ELENCO PEZZI DI RICAMBIO PIECES DETACHEES SPARE PARTS LIST ERSATZTEILLISTE PIEZAS DE REPUESTO	CODICE CODE KODE
22	Fianco Partie laterale Side panel Seitenblech Flanco	656254
23	Presa dinse dx 50 Prise dix dx 50 Dinse socket dx 50 Dinse steckdose dx 50 Enchufe dinse dx 50	712036
24	Spina dinse dx 50 Fiche dinse dx 50 Dinse plug dx 50 Dinse stecker dx 50 Enchufe dinse dx 50	712040
25	Toledo 300 pinza di massa 300a Toledo 300 borne de masse 300a Toledo 300 work clamp 300a Toledo 300 masseklemme 300a Toledo 300 borne de masa 300a	712231
26	Rullino d. 0,6-0,8 Mm fe Galet d. 0,6-0,8 Mm fe Feed roll d. 0,6-0,8 Mm fe Vorschubrolle d. 0,6-0,8 Mm fe Roldana d. 0,6-0,8 Mm fe	722112
27	Attacco torcia Attelage torche Torch connection Brenneranschluss Enganche soplete	723229
28	Rullino d. 0,8-1 Mm al Galet d. 0,8-1 Mm al Feed roll d. 0,8-1 Mm al Vorschubrolle d. 0,8-1 Mm al Roldana d. 0,8-1 Mm al	742090
29	Ancora controrullino Ancre contre-galet Anchor for pressure roller Anker für gegenrolle Ancora para contra roldana	742096
30	Mt25 torcia mig 3 m Mt25 torche mig 3 m Mt25 mig torch 3 m Mt25 mig brenner 3 m Mt25 antorcha mig 3 m	742183
31	Tubo capillare ø 2x5 Tuyau capillaire ø 2x5 Wire conduit ø 2x5 Kapillarrohr ø 2x5 Tubo capilar ø 2x5	742365
32	Vite bloccarullino Vis ferme galet Rollerfixing screw Rollerhalterschraube Tornillo bloque roldana	742397
33	Kit morsetto Kit borne Clamp kit Zange kit Kit borne	981383
34	Kit traino due rulli Kit devidoir 2 roleaux Kit 2 rolls wirefeeder Kit 2 raeder drahtvorschub Kit alimentador de hilo 2 rollos	981496
35	Kit fondo Kit chassis Bottom kit Bodenteil kit Kit fondo	981498
36	Kit ponte monofase Kit pont monophasé Single phase bridge kit Einfasige brücke kit Kit puente monofasico	981581
37	Kit igt + diodi Kit igt + diodes Kit igt + diodes Kit igt + dioden Kit igt + diodos	981582
38	Kit diodi Kit diodes Diode kit Diode kit Kit diodo	981583
39	Kit aspo 15kg Kit support bobine 15kg Reel kit 15kg Wickler kit 15kg Kit aspa 15kg	981703
40	Kit mantello Kit capot Cover kit Deckel kit Kit panel de cobertura	981996
41	Kit mosfet flyback Kit mosfet flyback Mosfet flyback kit Mosfet flyback kit Kit mosfet flyback	982126
42	Kit condensatore snap-in Kit condensateur snap-in Condenser kit snap-in Kondensator kit snap-in Kit condensator snap-in	982183

REF.	ELENCO PEZZI DI RICAMBIO PIECES DETACHEES SPARE PARTS LIST ERSATZTEILLISTE PIEZAS DE REPUESTO	CODICE CODE KODE
43	Kit scheda completa Kit platine complete Complete control pcb kit Komplette steuerungskarte kit Kit tarjeta de control completa	982185
44	Kit scheda pannello Kit scheda pannello Kit scheda pannello Kit scheda pannello	982187
45	Kit retro Kit partie arriere Back panel kit Rückseite kit Kit trasera	982188
46	Kit frontale Kit partie frontal Front panel kit Gerätefront kit Kit frontal	982189
47	Kit pressacavo + ghiera Kit presse cable + embout Kit cable bushing + ring nut Kit kabelhalter + nutmutter Kit prensa cable + virola	990046
48	Kit guaina entrata motore Kit gaine entree moteur Gas hose kit Drahtuehrungsseelekit Kit vaina guidera alambre	990097

Schema elettrico, Schéma électrique, Diagram, Schaltplan, Esquema de conexiones.



Esploso torcia, Dessin torche, Torch drawing, Schlauchpaket - Explosionszeichnung, Diseño seccionado antorcha.



REF.	ELENCO PEZZI RICAMBIO TORCIA LISTE PIECES DETACHEES TORCHE SPARE PARTS LIST TORCH ERSATZTEILLISTE SCLAUCHPAKET PIEZAS DE REPUESTO ANTORCHA	CODICE CODE KODE
1	Ghiera Fissaggio Embout Fixage Ring Nut Nutmutter Virola Por Fijacion	722007
2	Dado Fissaggio Guaina Ecrou Fixage Gaine Liner Nut Befestigungsmutter Dado Por Fijacion Vaina	722013
3	Attacco Torcia Attelage Torche Torch Connection Schlauchpaketanschluss Enganche Antorcha	742175
4	Tubetto Di Contatto D. 0,6 Mm Tube Contact D. 0,6 Mm Contact Tip D. 0,6 Mm Kontaktroehrchen D. 0,6 Mm Tubito De Contacto D. 0,6 Mm	722415
4	Tubetto Di Contatto Al/flux D. 1 Mm Nippe Contact Al/flux D. 1 Mm Al/flux Contact Tip D. 1 Mm Al/flux Kontaktroehrchen D.1 Mm Tubito De Contacto Al/flux D. 1 Mm	722552
4	Tubetto Di Contatto Al/flux D. 1,2 Mm Tube Contact Al/flux D. 1,2 Mm Al/flux Contact Tip D. 1,2 Mm Al/flux Kontaktroehrchen D.1,2 Mm Tubito De Contacto Al/flux D. 1,2 Mm	722553
4	Tubetto Di Contatto D.0,8 Tube Contact D.0,8 Contact Tip D.0,8 Kontaktroehrchen D.0,8 Tubito De Contacto D.0,8	722680
4	Tubetto Di Contatto D. 1 Mm Tube Contact D. 1 Mm Contact Tip D. 1 Mm Kontaktroehrchen D. 1 Mm Tubito De Contacto D. 1 Mm	722681
4	Tubetto Di Contatto D. 1,2 Mm Tube Contact D. 1,2 Mm Contact Tip D. 1,2 Mm Kontaktroehrchen D. 1,2 Mm Tubito De Contacto D. 1,2 Mm	722682
5	Guaina Guidafile D. 0,6-0,8 3M Gaine Pour Fil D. 0,6-0,8 3M Liner D. 0,6-0,8 3M Drahtfuehrungsseele D. 0,6-0,8 3M Vaina Guia Hilo D. 0,6-0,8 3M	722437
5	Guaina Guidafile D. 1-1,2 Mm Al Gaine Guide Fil D. 1-1,2 Mm Al Wire Guide Hose D. 1-1,2 Mm Al Drahtfuehrungsseele D. 1-1,2 Mm Al Vaina Guadera Alambre D. 1-1,2 Mm Al	722516
5	Guaina Guidafile D. 1-1,2 Mm 3 M Gaine Pour Fil D. 1-1,2 Mm 3 M Liner D. 1-1,2 Mm 3 M Drahtfuehrungsseele D. 1-1,2 Mm 3 M Vaina Guia Hilo D. 1-1,2 Mm 3 M	722689

REF.	ELENCO PEZZI RICAMBIO TORCIA LISTE PIECES DETACHEES TORCHE SPARE PARTS LIST TORCH ERSATZTEILLISTE SCLAUCHPAKET PIEZAS DE REPUESTO ANTORCHA	CODICE CODE KODE
6	Ugello Cilindrico Buse Cylindrique Cylindrical Nozzle Zylindrische Duese Injector Cilindrico	722684
6	Ugello Conico Buse Conique Conical Nozzle Konische Duese Injector Conico	722685
6	Ugello Testa Fine Buse A Tete Fine Thin Headed Nozzle Verengte Duese Injector Cabeza Fina	722686
6	Ugello Per Puntatura D. 18 Mm Buse Pointage D. 18 Mm Spot Welding Nozzle D. 18 Mm Punktschweissduese D. 18 Mm Injector Por Puntos D. 18 Mm	722687
7	Nipples Ferma Guaina Nipples Serre Gaine Wire Guide Locking Nipples Drahtseeleklammnippel Nipples De Bloqueo Vaina	722598
8	Anello Or Bague Or Or Ring Or Ring Anillo Or	722601
8	Anello Or Anneau Or Or Ring Or Ring Anillo Or	722606
10	Tubetto Ferma Guaina Tuyau Serre Gaine Wire Guide Locking Tube Drahtseeleklammrohr Tubito De Bloqueo Vaina	722600
11	Diffusore Gas Diffuseur Gaz Gas Diffuser Gasdiffusor Diffusor Gas	722688
13	Molla Per Ugello Ressort Pour Buse Nozzle Spring Duesefeder Muelle Por Injector	722690
15	Isolante Corpo Torcia Isolant Corps De Torche Torch Connection Insulation Brenneranschlussblock Isolierteil Aislador Cuerpo De Antorcha	722693
16	Lancia Lance Swan Neck Brennerhals Encorvado	722696

REF.	ELENCO PEZZI RICAMBIO TORCIA LISTE PIECES DETACHEES TORCHE SPARE PARTS LIST TORCH ERSATZTEILLISTE SCLAUCHPAKET PIEZAS DE REPUESTO ANTORCHA	CODICE CODE KODE
17	Corpo Torcia Corp De Torche Torch Assy Brennerskupplung Enganche Antorcha	722441
18	Ghiera Per Torcia Embout Pour Torche Torch Ring Nut Brennernutmutter Virola Antorcha	742171
19	Supporto + Molla Torcia Support + Ressort Torche Torch Holder + Spring Brennerhalter + Feder Sosten Antorcha + Muelle	742173
20	Molla Torcia Ressort Torche Torch Spring Brennerfeder Muelle Antorcha	742174