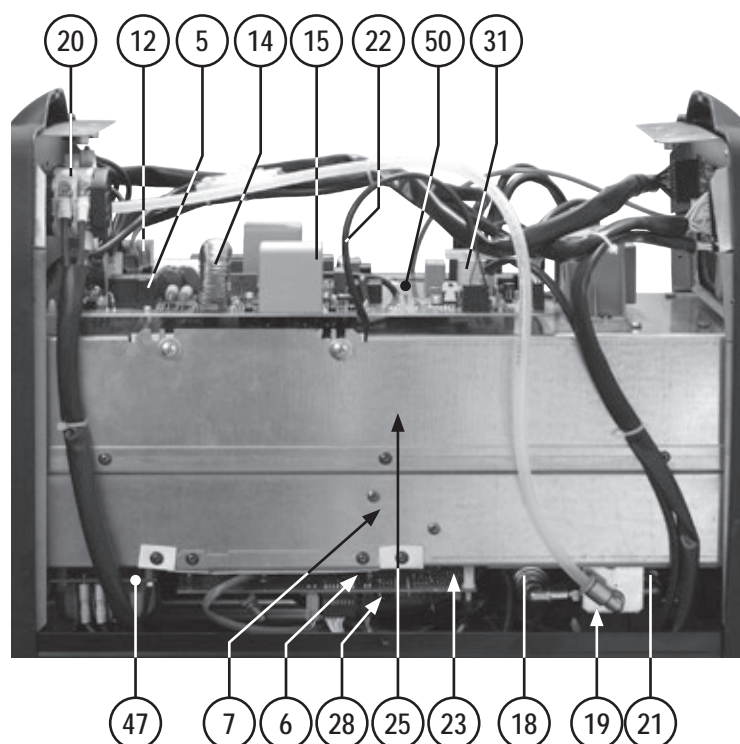
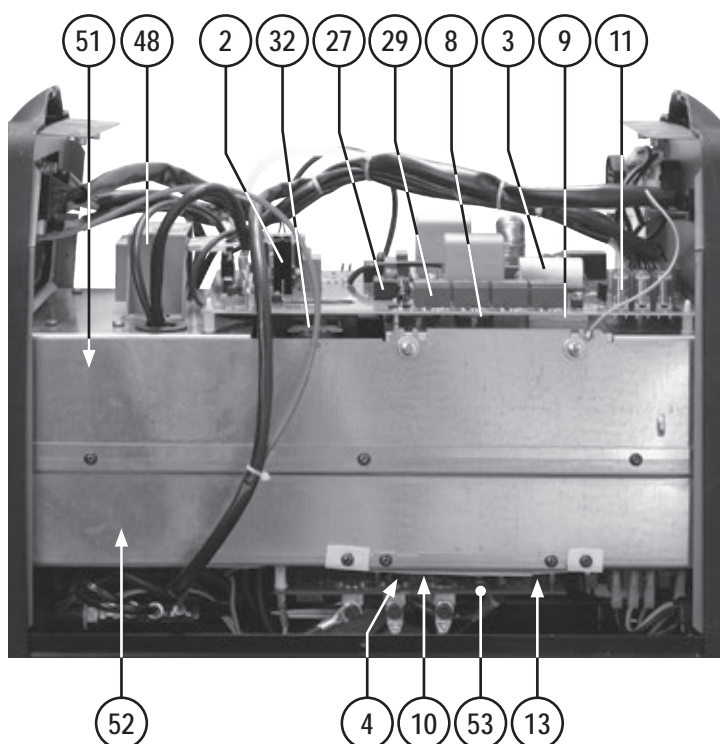
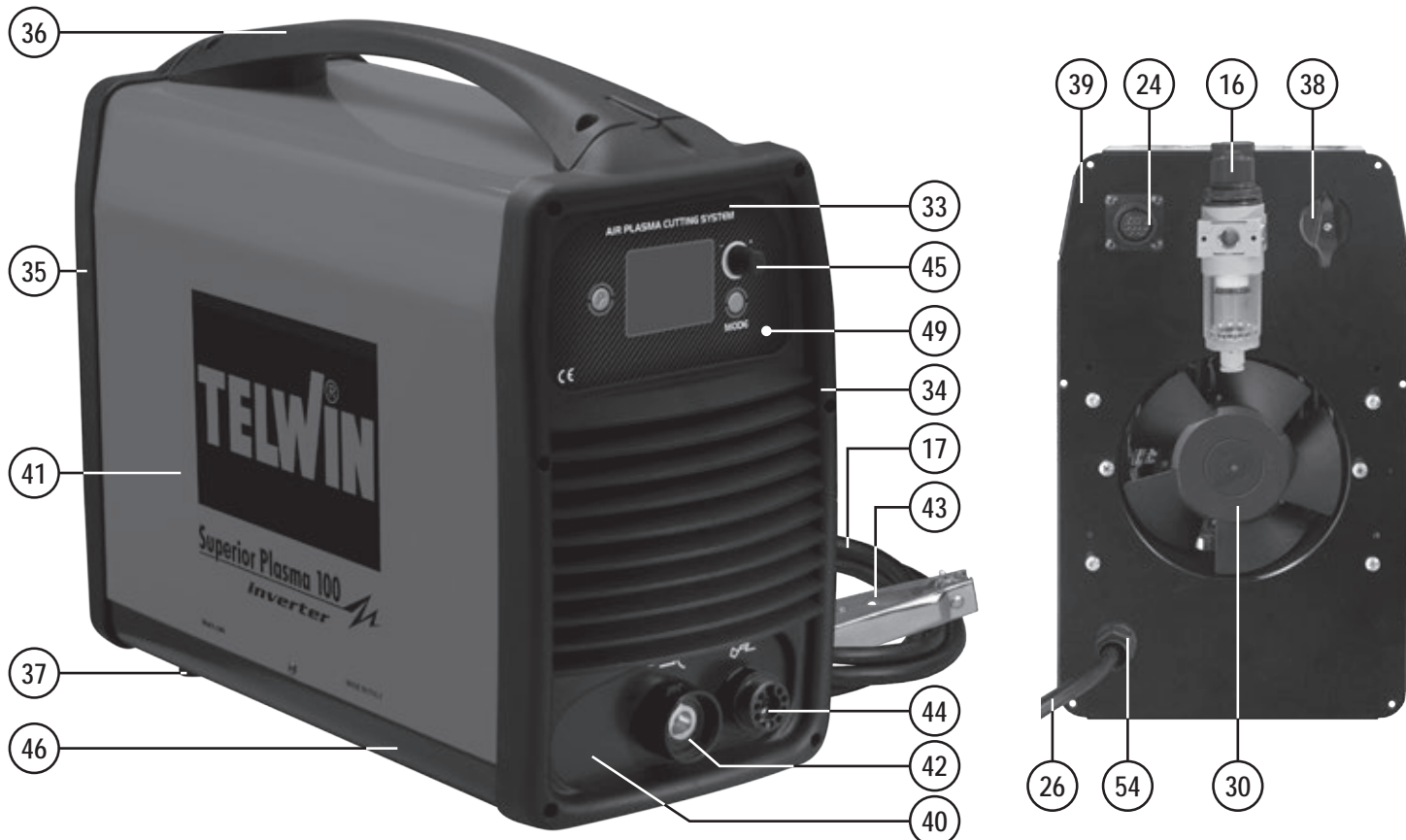


ELENCO PEZZI DI RICAMBIO
 LISTE PIECES DETACHEES
 SPARE PARTS LIST
 ERSATZTEILLISTE
 PIEZAS DE REPUESTO

SUPERIOR PLASMA 100



Esplso macchina, Dessin appareil, Machine drawing, Explosions Zeichnung des Geräts, Diseño seccionado maquina.

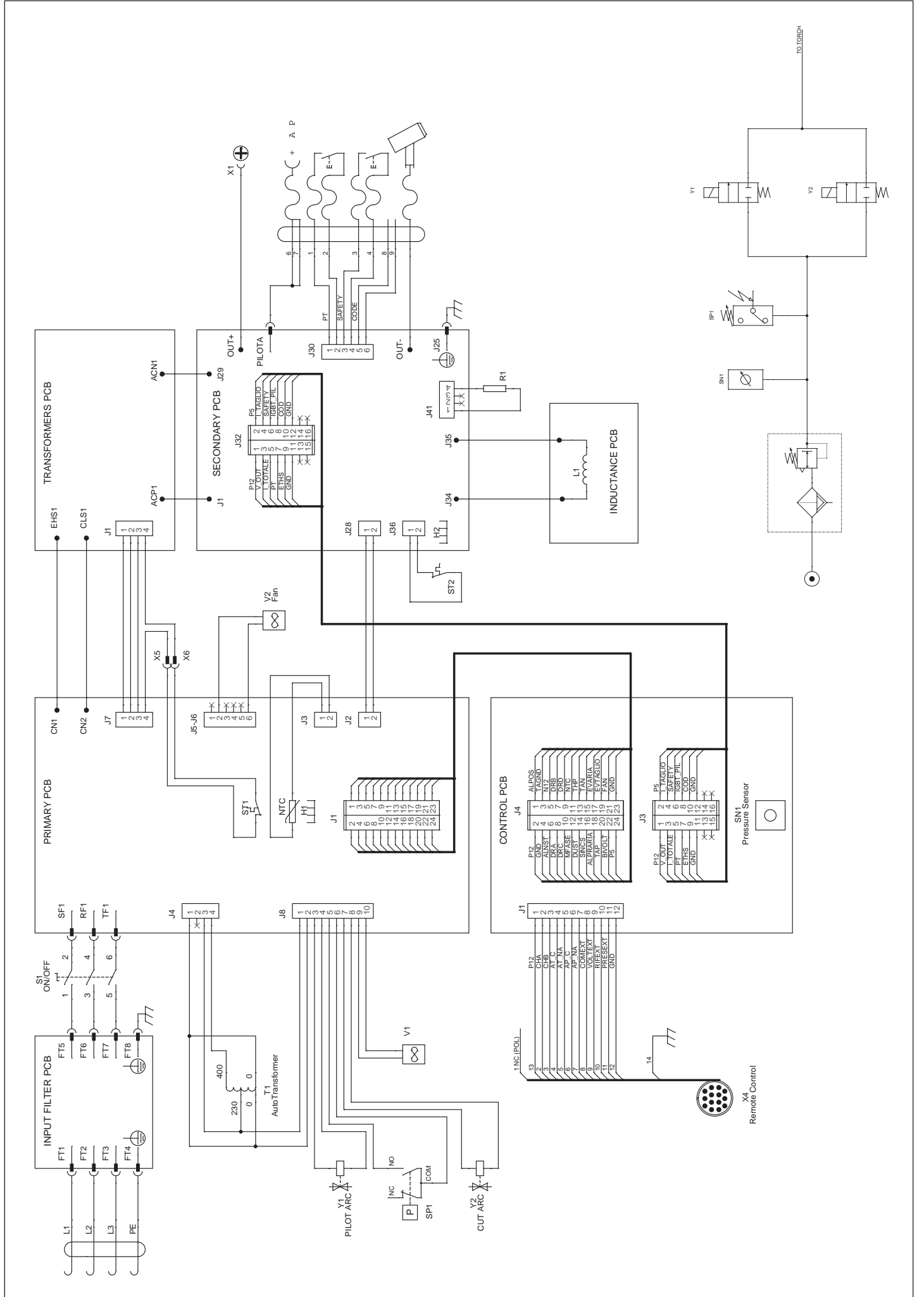


REF.	ELENCO PEZZI DI RICAMBIO PIECES DETACHEES SPARE PARTS LIST ERSATZTEILLISTE PIEZAS DE REPUESTO	CODICE CODE KODE
2	Igbt Igbt Igbt Igbt	111095
3	Condensatore Condensateur Condenser Kondensator Condensator	111099
4	Igbt Igbt Igbt Igbt	111193
5	Rele Relais Relais Relais Conectador	111583
6	Sensore hall Capteur hall Sensor hall Messfühler hall Sensor hall	111304
7	Resistenza Resistance Resistance Widerstand Resistencia	111354
8	Igbt Igbt Igbt Igbt	111394
9	Ponte Pont Bridge Brücke Puente	111465
10	Diode Diode Diode Diode Diode	112023
11	Rele' Relais Relais Relais Relais	113233
12	Rele' Relais Relais Relais Relais	113281
13	Kit diodi Kit diodes Diodes kit Dioden kit Kit diodos	981883
14	Induttanza Inductance Inductance Drossel Induccion	116747
15	Condensatore Condensateur Condenser Kondensator Condensator	116882
16	Riduttore pressione aria Reducteur de presion air Air pressure regulator Luftdruckminderer Reductor presion aire	120203
17	Cavo 10 mmq 5 m - dinse 50 Cable 10 mmq 5 m - dix 50 Cable 10 mmq 5 m - dinse 50 Kabel 10 mmq 5 m - dinse 50 Cable 10 mmq 5 m - dinse 50	120315
18	Pressostato Pressostat Pressure switch Druckanzeige Presostato	121750
19	Elettrovalvola Electrovanne Electro-valve Elektroventil Electrovalvula	121803
20	Commutatore Commutateur Switch Schalter Commutador	122017
21	Elettrovalvola Electrovanne Electrovalve Elektroventil Electrovalvula	121800
22	Cablaggio ntc Cablage ntc Wire set ntc Kabelsatz ntc Cables ntc	124228

REF.	ELENCO PEZZI DI RICAMBIO PIECES DETACHEES SPARE PARTS LIST ERSATZTEILLISTE PIEZAS DE REPUESTO	CODICE CODE KODE
23	Termostato Thermostat Thermostat Thermostat Thermostat	124846
24	Cablaggio comando a distanza Cable pour commande a distance Cable for remote control Fernreglerkabel Cable para mando a distancia	124853
25	Cablaggio ventilatore Cable de ventilateur Fan cable Ventilatorskabel Cable de ventilador	125034
26	Cavo alim. 4g2.5 2.5 M Cable alim. 4g2.5 2.5 M Mains cable 4g2.5 2.5 M Netzkabel 4g2.5 2.5 M Cable alim. 4g2.5 2.5 M	132430
27	Trasformatore di corrente Transformateur de courant Current transformer Stromwandler Transformador de corriente	152230
28	Trasformatore impulsi Transformateur pulsee Pulse transformer Pulse transformator Transformador pulsado	152261
29	Trasformatore impulsi Transformateur pulsee Pulse transformer Pulse transformator Transformador pulsado	152291
30	Ventilatore Ventilateur Fan Ventilator Ventilador	152297
31	Trasformatore Transformateur complet Transformateur complet Trafo Transformateur complet	169627
32	Induttanza primario Inductance primaire Primary inductance Primaer drossel Induccion primario	169642
33	Pannello Panneau Panel Tafel Panel	314651
34	Frontale Partie frontal Front panel Geraetefront Frontal	322881
35	Retro Partie arriere Back panel Rueckseite Trasera	322882
36	Manico Poignee Handle Handgriff Manija	322883
37	Piedino Embout Foot Fuss Pie	323001
38	Assieme manopola per commutatore Set poigne pour commutateur Switch knob set Umschaltergriff set Set manija para conmutador	323101
39	Retro Partie arriere Back panel Rückseite Trasera	642578
40	Frontale Partie frontal Front panel Gerätefront Frontal	642579
41	Mantello Capot Cover Deckel Panel de cobertura	656210
42	Presa dinse dx 50 Prise dix dx 50 Dinse socket dx 50 Dinse steckdose dx 50 Enchufe dinse dx 50	712036
43	Toledo 300 pinza di massa 300a Toledo 300 borne de masse 300a Toledo 300 work clamp 300a Toledo 300 masseklemme 300a Toledo 300 borne de masa 300a	712231

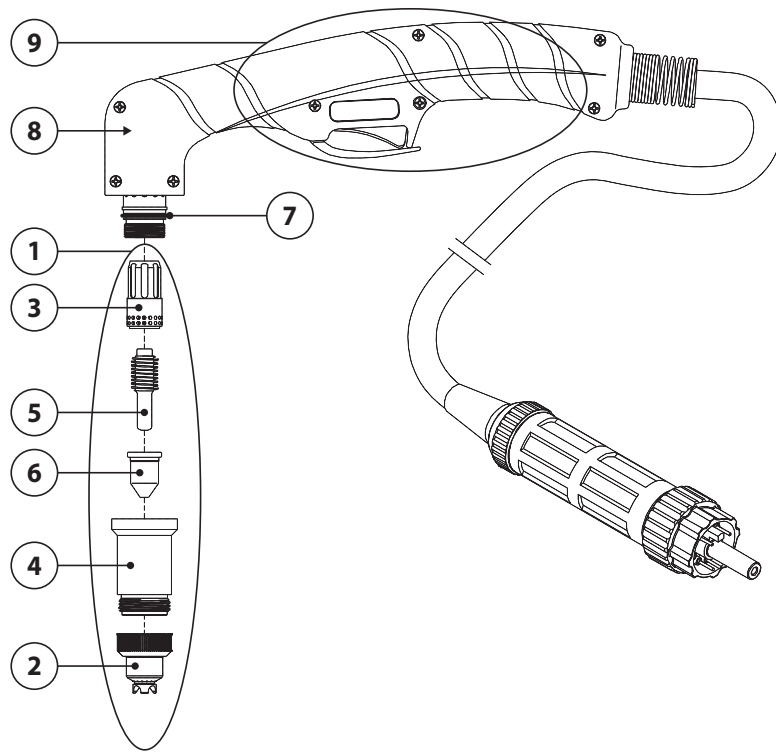
REF.	ELENCO PEZZI DI RICAMBIO PIECES DETACHEES SPARE PARTS LIST ERSATZTEILLISTE PIEZAS DE REPUESTO	CODICE CODE KODE
44	Attacco torcia Attelage torche Torch connection Brenneranschluss Enganche soplete	742642
45	Kit manopola encoder Kit poignee encoder Encoder knob kit Encodergriff kit Kit manija encoder	980520
46	Kit fondo Kit chassis Bottom kit Bodenteil kit Kit fondo	980817
47	Kit scheda filtro Kit platine filtre Filter card kit Filterkarte kit Kit tarjeta filtro	982009
48	Autotrasformatore Autotransformateur Autotransformer Autotransformator Autotransformador	169116
49	Kit ass. Pannello + scheda Kit panneau + fiche Panel + card kit Tafel + karte kit Panel + tarjeta kit	981872
50	Kit scheda primario Kit fiche primaire Primary pcb kit Primärtrafokarte kit Kit tarjeta primario	981873
51	Kit scheda induttanza Kit fiche inductance Inductance card kit Drosselskarte kit Kit tarjeta induccion	981874
52	Kit scheda trasformatore Kit fiche transformateur Transformer board kit Trafo karte kit Kit tarjeta transformador	981875
53	Kit scheda secondario Kit fiche secondaire Secondary pcb kit Sekundärtrafokarte kit Kit tarjeta secundario	981876
54	Kit pressacavo + ghiera Kit presse cable + embout Kit cable bushing + ring nut Kit kabelhalter + nutmutter Kit prensa cable + virola	990046

Schema elettrico, Schéma électrique, Diagram, Schaltplan, Esquema de conexiones.



Esploso torcia, Dessin torche, Torch drawing, Schlauchpaket - Explosionszeichnung, Diseño seccionado antorcha.

742653



REF.	ELENCO PEZZI RICAMBIO TORCIA LISTE PIECES DETACHEES TORCHE SPARE PARTS LIST TORCH ERSATZTEILLISTE SCLAUCHPAKET PIEZAS DE REPUESTO ANTORCHA	CODICE CODE KODE	REF.	ELENCO PEZZI RICAMBIO TORCIA LISTE PIECES DETACHEES TORCHE SPARE PARTS LIST TORCH ERSATZTEILLISTE SCLAUCHPAKET PIEZAS DE REPUESTO ANTORCHA	CODICE CODE KODE	REF.	ELENCO PEZZI RICAMBIO TORCIA LISTE PIECES DETACHEES TORCHE SPARE PARTS LIST TORCH ERSATZTEILLISTE SCLAUCHPAKET PIEZAS DE REPUESTO ANTORCHA	CODICE CODE KODE
1	Starter Kit 45 A Kit Consumables 45 A Starter Kit 45 A Starter Kit 45 A Kit De Inicio 45 A	802958	5	Kit 5 Elettrodi 45-150 A Kit 5 Electrodes 45-150 A Kit 5 Electrodes 45-150 A Kit 5 Elektroden 45-150 A Kit 5 Electrodos 45-150 A	802889			
1	Starter Kit 65 A Kit Consumables 65 A Starter Kit 65 A Starter Kit 65 A Kit De Inicio 65 A	802959	6	Kit 5 Ugelli 45 A Kit 5 Buses 45 A Kit 5 Nozzles 45 A Kit 5 DÜsen 45 A Kit 5 Toberas 45 A	802892			
1	Starter Kit 85 A Kit Consumables 85 A Starter Kit 85 A Starter Kit 85 A Kit De Inicio 85 A	802960	6	Kit 5 Ugelli 65 A Kit 5 Buses 65 A Kit 5 Nozzles 65 A Kit 5 DÜsen 65 A Kit 5 Toberas 65 A	802893			
1	Starter Kit 105 A Kit Consumables 105 A Starter Kit 105 A Starter Kit 105 A Kit De Inicio 105 A	802961	6	Kit 5 Ugelli 85 A Kit 5 Buses 85 A Kit 5 Nozzles 85 A Kit 5 DÜsen 85 A Kit 5 Toberas 85 A	802894			
1	Starter Kit 125 A Kit Consumables 125 A Starter Kit 125 A Starter Kit 125 A Kit De Inicio 125 A	802966	6	Kit 5 Ugelli 105 A Kit 5 Buses 105 A Kit 5 Nozzles 105 A Kit 5 DÜsen 105 A Kit 5 Toberas 105 A	802895			
2	Kit 2 Schermi 45-85 A Kit 2 Boucliers 45-85 A Kit 2 Shields 45-85 A Kit 2 Schutz 45-85 A Kit 2 Protecciones 45-85 A	802963	6	Kit 5 Ugelli 125 A Kit 5 Buses 125 A Kit 5 Nozzles 125 A Kit 5 DÜsen 125 A Kit 5 Toberas 125 A	802896			
2	Kit 2 Schermi 100-150 A Kit 2 Boucliers 100-150 A Kit 2 Shields 100-150 A Kit 2 Schutz 100-150 A Kit 2 Protecciones 100-150 A	802964	6	Kit 5 Ugelli Scriccatura 125 A Kit 5 Buses Decricage 125 A Kit 5 Gouging Nozzles 125 A Kit 5 Fugenhobeln DÜsen 125 A Kit 5 Toberas Torquado 125 A	804017			
2	Kit 3 Schermi Scriccatura 125 A Kit 3 Boucliers Decricage 125 A Kit 3 Gouging Shields 125 A Kit 3 Fugenhobeln Schutz 125 A Kit 3 Protecciones Torchado 125 A	804016	7	Kit 10 O-ring - Torcia Px-pxa Kit 10 O-ring - Torche Px-pxa Kit 10 O-ring - Px-pxa Torch Kit 10 O-ring - Px-pxa Brenner Kit 10 O-ring - Antorcha Px-pxa	804053			
3	Kit 2 Diffusori 45-85 A Kit 2 Diffuseurs 45-85 A Kit 2 Diffusers 45-85 A Kit 2 Diffusoren 45-85 A Kit 2 Diffusores 45-85 A	802888	8	Corpo Torcia Corps Torche Torch Body Schlauchpacketeil Cuerpo De Antorcha	742748			
3	Kit 2 Diffusori 100-150 A Kit 2 Diffuseurs 100-150 A Kit 2 Diffusers 100-150 A Kit 2 Diffusoren 100-150 A Kit 2 Diffusores 100-150 A	802891	9	Impugnatura + Pulsante Poignee + Poussoir Handle + Pushbutton Handgriff + Druckknopf Empunadura + Pulsador	742749			
4	Kit 1 Puntale Torcia 45-85 A Kit 1 Embout Torche 45-85 A Kit 1 Torch Safety Cap 45-85 A Kit 1 Schutzkappe 45-85 A Kit 1 Puntale Antorcha 45-85 A	802887						
4	Kit 1 Puntale Torcia 100-150 A Kit 1 Embout Torche 100-150 A Kit 1 Torch Safety Cap 100-150 A Kit 1 Schutzkappe 100-150 A Kit 1 Puntale Antorcha 100-150 A	802890						