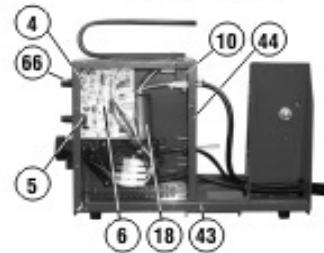
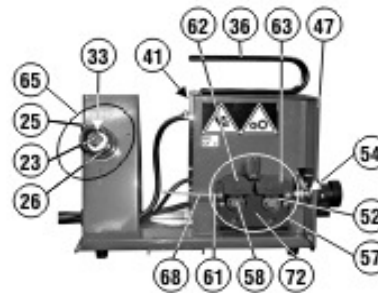
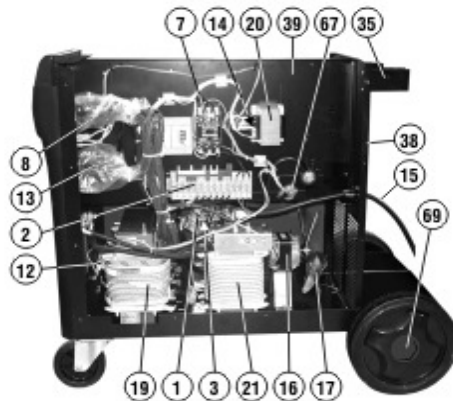
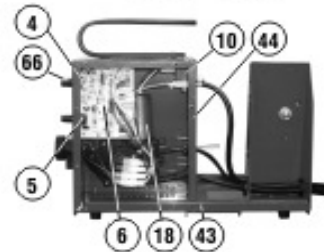
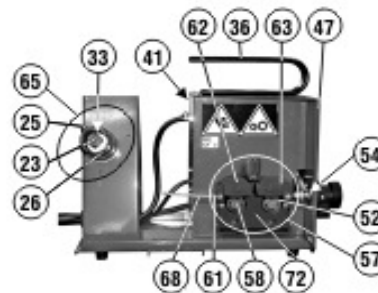
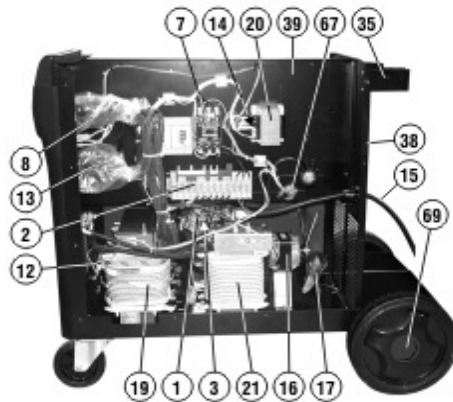


827004 MASTERMIG 400



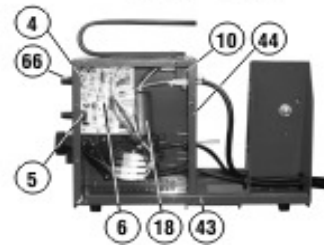
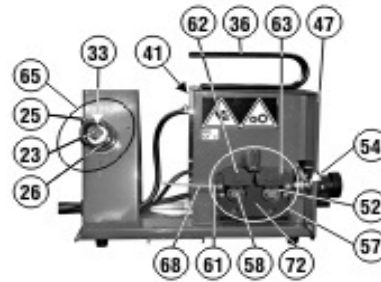
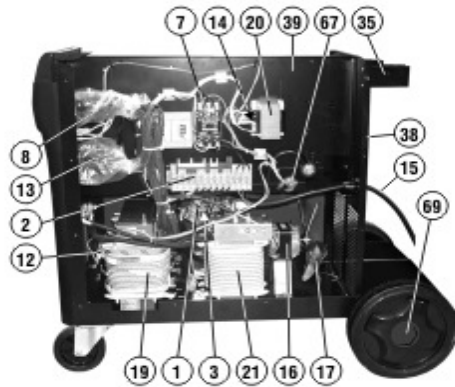
Ref.	Description	Key
1	RECTIFIER	112131
2	VOLTAGE CHANGING CARD	112163
3	RECTIFIER PROTECTION	112182
4	POTENTIOMETER	112363
5	POTENTIOMETER	112380
6	TIMER CONTROL PCB KIT	980714
7	CONTACTOR	121214
8	SWITCH	121514
9	YELLOW PILOT LAMP	122594
10	ELECTRO-VALVE	122682
11	SWITCH	122725
12	THERMOSTAT	122796
13	SWITCH	122802
14	FUSE	122879
15	MAINS CABLE 4G4 2 M	132206
16	MOTOR	152083
17	FAN BLADE	152113
18	WIRE FEED MOTOR	153028
19	TRANSFORMER	164091
20	AUXILIARY TRANSFORMER	164991
21	REACTANCE	169426
22	TORCH CONNECTION PROTECTION	312105
23	REEL HANDWHEEL	312137
24	HANDLE KIT	980082
25	REEL	322081
26	SPACER	322180
27	WHEEL + SWIVEL SUPPORT	322187
28	WHEEL	322772
29	FRAME	322736
30	SWITCH KNOB SET	323101
31	WHEELS AXLE	422020
32	ARGON GAS BOTTLE IT ADAPTOR	432036
33	REEL SPRING	452057
34	TORCH HOOK	644444

827004 MASTERMIG 400

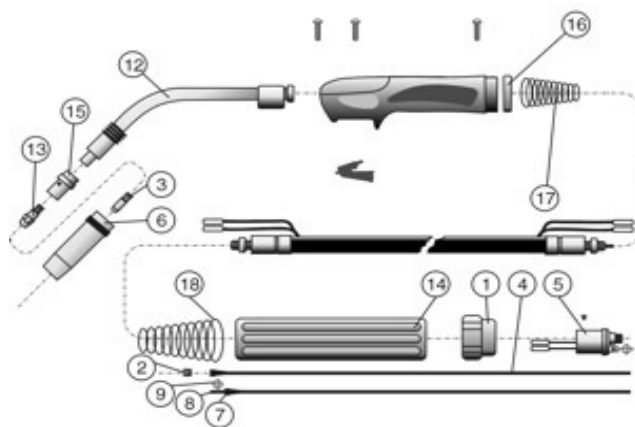


Ref.	Description	Key
35	BOTTLE HOLDER	644447
36	WIRE FEED HANDLE	644449
37	BOTTOM	645102
38	BACK PANEL	645103
39	DIAPHRAGM	645105
40	FRONT PANEL	649769
41	SIDE PANEL	645236
42	SIDE PANEL	651059
43	BOTTOM	645235
44	BACK PANEL	645237
45	DOOR KIT	980918
46	COVER KIT	980866
47	FRONT PANEL	649829
48	TOLEDO 400A WORK CLAMP	712032
49	DINSE SOCKET DX 50	712036
50	DINSE PLUG DX 50	712040
51	ROLL FEEDER FOR WIRE 0,6-0,8	722225
52	ROLL FEEDR FOR WIRE 0,8-1	722227
53	GAS REGULATOR 2 MANOMETERS	722346
54	WIRE CONDUIT Ø 2X5	742365
55	TORCH CONNECTION	723229
56	CABLE 35MMQ 3M-WORK CLAMP DX 50	723030
57	WIRE FEED ASSY	723198
58	ROLLERFIXING SCREW	742397
59	MT36 MIG TORCH 3 M 400 A	742186
60	FEED ROLL D.0,8-1 AL	742304
61	WIRE GUIDE INLET	742064
62	LEFT ANCHOR FOR PRESSURE ROLLER	742307
63	RIGHT ANCHOR FOR PRESSURE ROLLER	742308
64	8 PIN PLUG KIT	990226
65	REEL KIT	990264
66	SWITCH KNOB KIT	990328
67	SOCKET KIT	990330
68	GAS HOSE KIT	990097

827004 MASTERMIG 400



Ref.	Description	Key
69	WHEEL CAP	322773
70	ROLL FEEDER FOR WIRE 1,2-1,6	722241
71	FEED ROLL D.1-1,2	742366
72	COVER	322814
73	ADAPTER	742166
74	MOTOR DRIVE GEAR	742348
75	GEAR	742495



Ref.	Description	Key
1	RING NUT	722007
2	LINER NUT	722013
3	CONTACT TIP AL/FLUX Ø 1,2 MM	722553
3	CONTACT TIP Ø 1,0 MM	722681
3	CONTACT TIP AL/FLUX Ø 1,0 MM	722552
3	CONTACT TIP Ø 1,2 MM	722682
3	CONTACT TIP D. 1,6 MM	722797
3	CONTACT TIP Ø 0,6 MM	722415
3	CONTACT TIP D.0,8	722680
3	CONTACT TIP AL Ø 1,6 MM	722818
4	WIRE GUIDE HOSE Ø 1,6-2 MM ALU	722597
4	WIRE GUIDE HOSE Ø 1-1,2 MM 3 M	722689
4	LINER D. 0,6-0,8 3M	722437
4	WIRE GUIDE HOSE Ø 1-1,2 MM AL	722516
5	TORCH ASSY	722441
6	THIN HEADED NOZZLE	722793
6	CONICAL NOZZLE	722792
6	SPOT WELDING NOZZLE	722794
7	WIRE GUIDE LOCKING NIPPLES	722599
7	WIRE GUIDE LOCKING NIPPLES	722598
8	WIRE GUIDE LOCKING TUBE	722600
8	OR RING	722601
9	OR RING	722606
12	SWAN NECK	722788
13	CONTACT TIP HOLDER	722789
14	TORCH CONNECTION	742175
15	GAS DIFFUSER	722791
16	TORCH RING NUT	742171
17	TORCH HOLDER + SPRING	742173
18	TORCH SPRING	742174