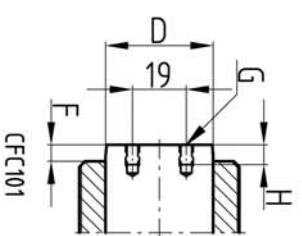
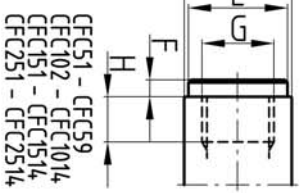


Modell	A	B	C	D	E	F	G	H	J	K	L	M	N	P	R	Vikt
	mm	Ømm	mm	Ømm	Ømm	mm		mm	mm		mm		mm	Ømm	mm	kg
FC1006P - FC10010P																
FC1006	110	38	19	25,4	25	6	3/4"-16 UNF	16	23	1/4"-20 UNC	14	1/2"-16 UN	29	—	—	0,8
FC15P	156	38	19	25,4	25	6	3/4"-16 UNF	16	23	1/4"-20 UNC	14	1/2"-16 UN	29	—	—	1,2
FC1514P	216	38	19	25,4	25	6	3/4"-16 UNF	16	23	1/4"-20 UNC	14	1/2"-16 UN	29	—	—	1,5
FC251P - FC2514P	273	38	19	25,4	25	6	3/4"-16 UNF	16	23	1/4"-20 UNC	14	1/2"-16 UN	29	—	—	1,9
FC51P - FC514P	324	38	19	25,4	25	6	3/4"-16 UNF	16	23	1/4"-20 UNC	14	1/2"-16 UN	29	—	—	2,2
FC101P - FC1014P																
FC502P - FC5013P																
FC15P - FC1514P																
FC251P - FC2514P																
FC51P - FC514P																
FC101P - FC1014P																
FC502	140	85	22	60	50	10	1/2"-16 UNF	25	59	1/2"-13 UNC	19	3/8"-16 UN	49	—	—	5,1
FC15P	165	85	22	60	50	10	1/2"-16 UNF	25	59	1/2"-13 UNC	19	3/8"-16 UN	49	—	—	5,9
FC1514P	216	85	22	60	50	10	1/2"-16 UNF	25	59	1/2"-13 UNC	19	3/8"-16 UN	49	—	—	7,7
FC251P	273	85	22	60	50	10	1/2"-16 UNF	25	59	1/2"-13 UNC	19	3/8"-16 UN	49	—	—	9,7
FC2514P	324	85	22	60	50	10	1/2"-16 UNF	25	59	1/2"-13 UNC	19	3/8"-16 UN	49	—	—	11,3
FC51P	375	85	22	60	50	10	1/2"-16 UNF	25	59	1/2"-13 UNC	19	3/8"-16 UN	49	—	—	13,3
FC514P	424	85	22	60	50	10	1/2"-16 UNF	25	59	1/2"-13 UNC	19	3/8"-16 UN	49	—	—	15
FC101P	473	70	25	48	38	10	1"-8 UNC	25	48	3/8"-16 UNC	13	2 3/4"-16 UN	30	—	—	10,3
FC51	124	70	19	48	38	10	1"-8 UNC	17	48	3/8"-16 UNC	13	2 3/4"-16 UN	30	—	—	3
FC15P	149	70	19	48	38	10	1"-8 UNC	22	48	3/8"-16 UNC	13	2 3/4"-16 UN	30	—	—	3,5
FC1514P	200	70	19	48	38	10	1"-8 UNC	22	48	3/8"-16 UNC	13	2 3/4"-16 UN	30	—	—	4,5
FC251P	272	70	25	48	38	10	1"-8 UNC	25	48	3/8"-16 UNC	13	2 3/4"-16 UN	30	—	—	6,5
FC2514P	322	70	25	48	38	10	1"-8 UNC	25	48	3/8"-16 UNC	13	2 3/4"-16 UN	30	—	—	7,5
FC51P	373	70	25	48	38	10	1"-8 UNC	25	48	3/8"-16 UNC	13	2 3/4"-16 UN	30	—	—	8,5
FC514P	424	70	25	48	38	10	1"-8 UNC	25	48	3/8"-16 UNC	13	2 3/4"-16 UN	30	—	—	9,5
FC101	451	57	19	38	35	6	1"-8 UNC	22	40	5/16"-18 UNC	12	2 1/4"-14 UN	27	—	—	6,8
FC51	90	57	19	38	35	6	10-24 UN	7	40	5/16"-18 UNC	12	2 1/4"-14 UN	27	—	—	1,5
FC15P	121	57	19	38	35	6	1"-8 UNC	17	40	5/16"-18 UNC	12	2 1/4"-14 UN	27	—	—	2
FC1514P	171	57	19	38	35	6	1"-8 UNC	17	40	5/16"-18 UNC	12	2 1/4"-14 UN	27	—	—	2,7
FC251P	247	57	19	38	35	6	1"-8 UNC	22	40	5/16"-18 UNC	12	2 1/4"-14 UN	27	—	—	4
FC2514P	298	57	19	38	35	6	1"-8 UNC	22	40	5/16"-18 UNC	12	2 1/4"-14 UN	27	—	—	4,6
FC51P	349	57	19	38	35	6	1"-8 UNC	22	40	5/16"-18 UNC	12	2 1/4"-14 UN	27	—	—	5,3
FC514P	400	57	19	38	35	6	1"-8 UNC	22	40	5/16"-18 UNC	12	2 1/4"-14 UN	27	—	—	6
FC101	451	57	19	38	35	6	1"-8 UNC	22	40	5/16"-18 UNC	12	2 1/4"-14 UN	27	—	—	6,8



**REHOBOT**

MÄTTNING

REHOBOT MÄTTNING

CFC - CYLINDRAR

B-403,41