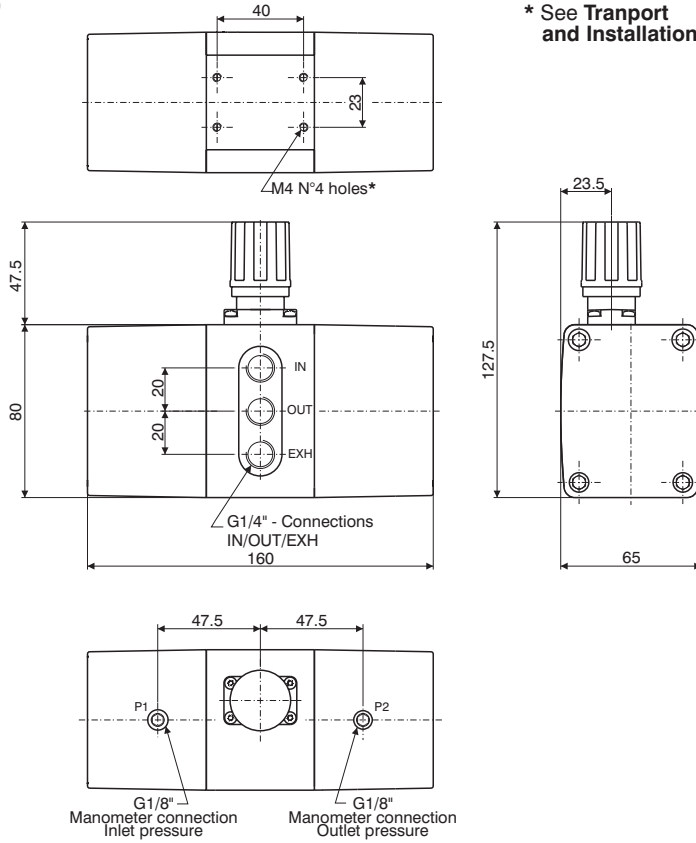
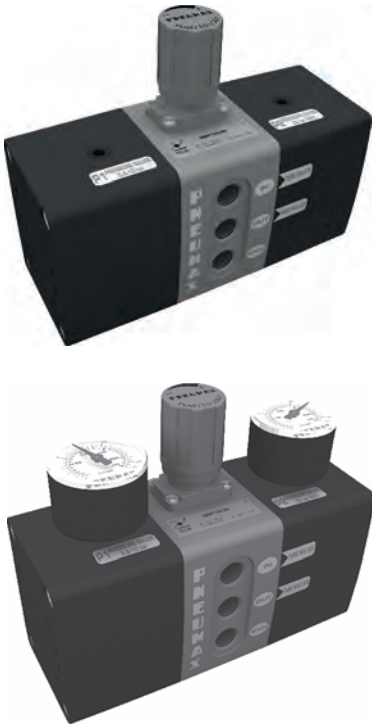




Pressure booster in Technopolymer Ø40
ATEX CE II 3GD



* See Transport and Installation

Ordering code

MDPT40.2R.⊙

MANOMETER OPTIONS

Without options = Standard without manometer

- ⊙ A = Manometer P1 0-12 bar
Manometer P2 0-20 bar
- B = Manometer P1 0-12 bar
Manometer P2 0-16 bar
- C = Manometer P1 0-12 bar
Manometer P2 0-12 bar

Operational characteristics

- Pressure Booster with max. 2:1 Compression ratio
- Automatic operation for use with compressed air only
- Maintains downstream air when the supply pressure fails (Providing the circuit has no leakage)
- Integrated regulator for output pressure control, with overpressure relief valve
- IN,OUT and EXH connections – G1/4" on the same side
- Manometer connections G1/8" to monitor and control the input and output pressures
- Body and cover in technopolymer
- Connections in technopolymer

Technical characteristics

Connections (IN / OUT / EXT)	G1/4"
Manometer connections P1/P2	G1/8"
Working pressure (bar) [Min. - Max.]	2,5 ÷ 10
Working temperature (°C) [Min. - Max.]	-5 ÷ + 50
Multiplication ratio max.	2 : 1
Assembly position	Any
Pressure regulation	Manual with relieving
Weight	905 gr.
Max. fittings torque	G1/8 = 4 N/m G1/4 = 9 N/m

Characteristics curves

