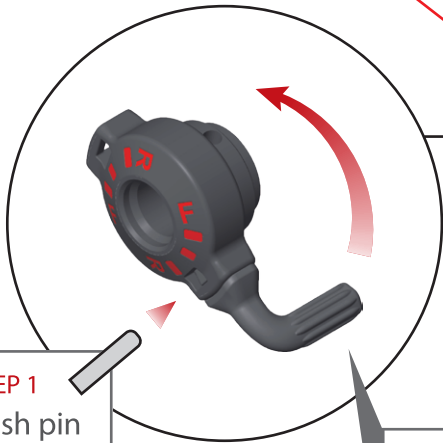


TPT-2824

Premium Series 1" Impact Wrench

New invented Mechoneer drive system optimizes the tool performance in every aspect

360° adjustable side handle rotates fully around the tool for ease of operation



STEP 1
Push pin

STEP 2
Pull tab and insert to the other side

Patented trigger mounted combined forward/reverse/power management switch provides convenient one hand operation

Composite housing with ergonomic handle design

Swivel hose connection keeps you working freely without tangled cords

Best weight to power ratio 3,120 NM / 6.8 kgs

Model	SQ Drive	Free Speed	Busting Torque Reverse		Net Weight		Length		Noise	Vibration Level @load	Average Air Cons. @ Load		Air Inlet NPTF	Hose Size	
	inch	rpm	ft-lb	Nm	lb	kg	inch	mm	dBA	m/s ²	cfm	L/min	inch	inch	mm
TPT-2824	1"	4,300	2,300	3,120	14.9	6.8	9.6	244	102	8.8	10.6	300	1/2	1/2	13
TPT-2824-L	1"	4,300	2,300	3,120	16.5	7.5	15.9	404	102	8.8	10.6	300	1/2	1/2	13

Working air pressure at air inlet : 6.3 kg / cm² (90 PSI)



MECHONEER®

TPT-2825

Premium Series 1" Impact Wrench



**REDUCING
VIBRATION**



**REDUCING
NOISE**



**INCREASING
LIFE**

360° adjustable side handle rotates fully around the tool for ease of operation

Ergonomic handle frame design with over-mold injection provides less vibration and fatigue

8" extended anvil increases accessibility in hard to reach places

+ Short anvil available

Soft touch Trigger

New invented Mechoneer drive system optimizes the tool performance in every aspect

Rubber housing cover & steel core design gives the good durability to resist drops and harsh work environment

Swivel hose connection keeps you working freely without tangled cords

Best weight to power ratio

3,390 NM / 9.2 kgs

Model	SQ Drive	Free Speed	Busting Torque Reverse		Net Weight		Length		Noise	Vibration Level @load	Average Air Cons. @ Load		Air Inlet NPTF	Hose Size	
	inch	rpm	ft-lb	Nm	lb	kg	inch	mm	dBA	m/s ²	cfm	L/min	inch	inch	mm
TPT-2825	1"	6,000	2,500	3,390	18.7	8.5	13.4	340	103	10.8	12	340	1/2	1/2	13
TPT-2825-L	1"	6,000	2,500	3,390	20.2	9.2	20.7	526	103	10.8	12	340	1/2	1/2	13

Working air pressure at air inlet : 6.3 kg / cm² (90 PSI)