

USERS' MANUAL
HYDRAULIC CORNER NOTCHING MACHINE
VARIABLE ANGLE ADJUSTABLE
HNM - 6 VP





EC DECLARATION OF CONFORMITY

MANUFACTURER : **ISITAN MAKİNA SAN. TİC. LTD. ŞTİ**

ADDRESS : Hasanağa Organize Sanayi Bölgesi 8. Cad.

No:1

Nilüfer - Bursa / TÜRKİYE

Name and address of the person : **SERKAN ŞAHİN**

authorized to compile the technical file : Hasanağa Organize Sanayi Bölgesi 8 . Cad.

No:1

Nilüfer - Bursa / TÜRKİYE

The undersigned Company certifies under its sole responsibility that the item of equipment specified below satisfies the requirements of the Machinery Directive **2006/42/EC** which is apply to it.

The item of equipment identified below has been subject to internal manufacturing checks with monitoring of the final assessment by **ISITAN**

PRODUCT : HYDRAULIC CORNER NOTCHING MACHINE-VARIABLE ANGLE ADJUSTABLE

MODEL / TYPE : **HNM - 6 VP**

SERIAL NO :

DIRECTIVES

MACHINERY DIRECTIVE 2006/42/EC

LOW VOLTAGE DIRECTIVE 2014/35/EC

ELECTROMAGNETIC COMPATIBILITY DIRECTIVE 2014/30/EC

Regulations Applied acc. to HARMONIZE STANDARDS

EN ISO 13857 : 2019, EN ISO4413 : 2010, EN ISO 12100:2010

EN 954:1996 EN 60204–1: 2018

Place and date of issue : **Bursa /..... /2020**

Name and position of : **Serkan ŞAHİN**

authorized person : **General Manager**

Signature of authorized person :

||
"
||

= = =

GENERAL NOTES

Introduction

Thank you for choosing us. We are proud to have you in our long list of satisfied customers all over the world.

This User's Manual is absolutely for your safety and is essential for the machine to have a long production life. As long as you keep up with our Manual you will be able to run your machine smoothly and safely. Keep in mind that the machine is designed absolutely to perform maximum safety and for efficient working.

In this Manual you can find instructions and information about:

- Correct installations of the machine
- Description of the functional parts of the machine
- Set-up and start-up adjustments
- Correct standard and scheduled maintenance
- Simple safety regulations and accident prevention.

Therefore, as far as the user's safety is concerned, in this handbook the possible risks connected with machine operation are pointed out as follows:



Attention: Showing the risks of accident, if instructions are not followed.



Warning: Showing the probable damages to the machine or equipment, if the instructions are not strictly followed.



Note: It gives useful information.

It is certainly necessary that the operator should read and understand all the **Attention**, **Warning**, **Note** specified in this Manual before starting with operation of the machine and before any lubrication or maintenance intervention

On all steps of installation, operation and maintenance safety must be your first concern for the protection of yourself, other users and the service of the machine. In case of any failure please first refer to this Manual, and then if a solution cannot be found contact first of all the distributor where you purchased our product. Do not forget to refer to the drawings and the numbers for any spare part needed or to define any problem. Make sure you have the serial number and production year of the machine.

Our technical staff will make their best to help you in the most convenient way.



Transport

As soon as you receive the machine, check for any visible transport damages. If there are any visible damages; report it straight away to the transporter company and of course to us or your supplier.

*Remove any protective crates around the machine and read the instructions on related chapters of this Manual carefully to set up the machine. If the machine is damaged while transport, **immediately take some photographs for insurance** claims.*

Take precautions while loading / unloading or moving the machine to avoid any injuries. Refer also to related chapter of this Manual for the best way of handling the machine.

Electrical Information

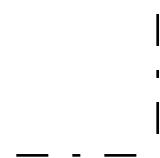
All necessary connection procedure can be found on this Manual. Do not try to connect the machine before reading these procedures and fully understanding the drawings. For any unclear matters get in touch with us or any of our distributors. Have the machine connected by a qualified electric technician. For, as we made clear in the “general conditions of guarantee”, under no circumstances installing mistakes, including electrical connection mistake, can not be covered by guarantee agreement. Always turn off power before making any connections or disconnecting the machine.

Maintenance

Your machine is designed and produced to work efficiently and smoothly. To achieve this you should also take care while operating the machine. Regard Maintenance sections to have the longest life from your machine. Try and use original spare parts where necessary and most importantly do not overload the machine or do not make any unauthorized modifications.

Safety

Take all precautions possible to avoid any personal injury while using the machine. Keep in mind to protect the third party people around the machine. Refer to safety directives.



DESCRIPTIONS

This machine has the function of max. cuts up to 6 mm. T slot top table realizes precise cutting and there is no need for alignment for different sheet thicknesses by means of automatic blade gap adjustment.

INSTALLATION

Before preparing the machine for installation and start-up, a detailed visual account is required in order to detect any possible damages that occurred during transporting and handling.

If one or several parts of the machine have been damaged while shipping, the installation of the machines has to be suspended.

While lifting take care of these points:

- 1. Always lift and carry the machine from the handles*
- 2. Use a steel rope capable of carrying one ton.*
- 3. Take precautions for handling and lifting.*
- 4. Check if the load is properly balanced by lifting it an inch or two.*
- 5. Lift the machine, proceeding with care, without sudden accelerations or quick changes of directions.*



Caution:

Machinery general safety warnings

- For safety, machine must be set up, used and serviced properly*
- Read, understand and follow instructions in the operator's and parts manual which was shipped with your machine.*

When setting up machine:

- Always avoid using machine in damp or poorly lighted work areas.*
- Always be sure machine is securely anchored to the floor.*
- Always keep machine guards in place.*
- Always put start switch in "OFF" position before plugging in machine.*
- Wear proper apparel. No loose clothing or jewelry which can get caught in moving parts. Rubber soled foot wear is recommended for best footing.*
- Never leave the machine running while unattended. Machine shall be shut off whenever it is not in operation.*
- Keep work area clean. Cluttered areas invite accidents.*
- Use only recommended accessories and follow manufacturers instructions pertaining to them.*
- All visitors should be kept at a safe distance from the work area. Make workshop completely safe by using padlocks, master switches, or by removing starter keys.*
- Never place any part of your body at the machine running.*
- Never service machine with motor on.*

SPECIFICATION

ST 37 STEEL	<i>mm (60° - 140°)</i>	6
	<i>mm (30° - 59°)</i>	4
STAINLESS STEEL	<i>mm (60° - 140°)</i>	3
	<i>mm (30° - 59°)</i>	2,5
Motor	<i>kW</i>	4
Table dimension	<i>mm</i>	1150 x 610
Cutting Angle	<i>degree</i>	30 ... 140
Max. Cutting Stroke	<i>Per min.</i>	30
Blade length	<i>mm</i>	200 x 200
Oil Tank Capacity	<i>liter</i>	35
Max. Working Pressure	<i>bar</i>	200
Lenght	<i>mm</i>	1150
Width	<i>mm</i>	1140
Height	<i>mm</i>	1210
Weight(approx)	<i>Kg</i>	650

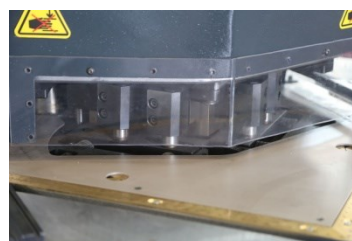
* HNM - 6 V variable rake hydraulic corner notchers have strong frame with its statically and dynamically rigid steel and top beam material.

* T slot top table realizes precise cutting and there is no need for alignment for different sheet thicknesses ny means of automatic blade gap adjustment.

* HNM- 6 V series perform frequent cutting repeatability via 4 hydraulic hold-down cylinders.

Special Equipment

* Automatic feeding system



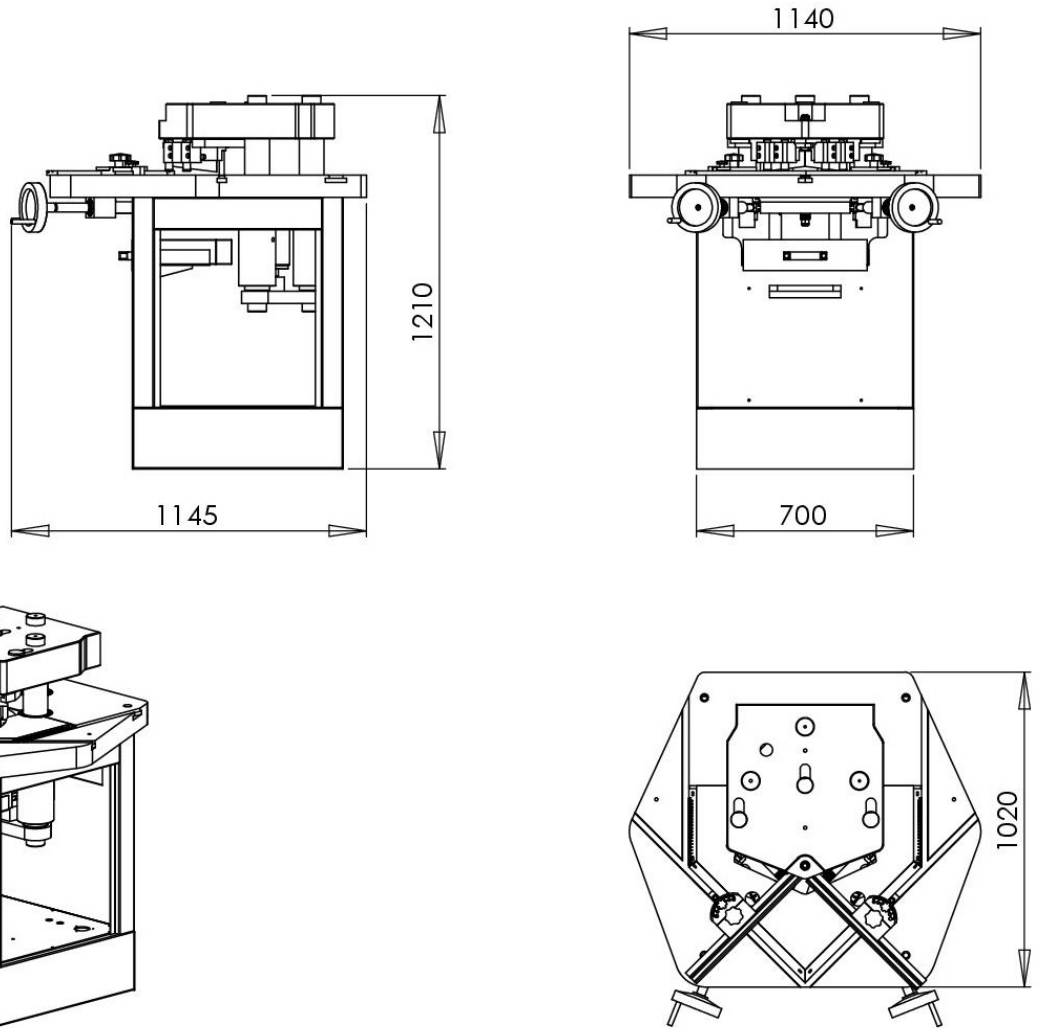
➤ **Angle adjustable blades (standard)**

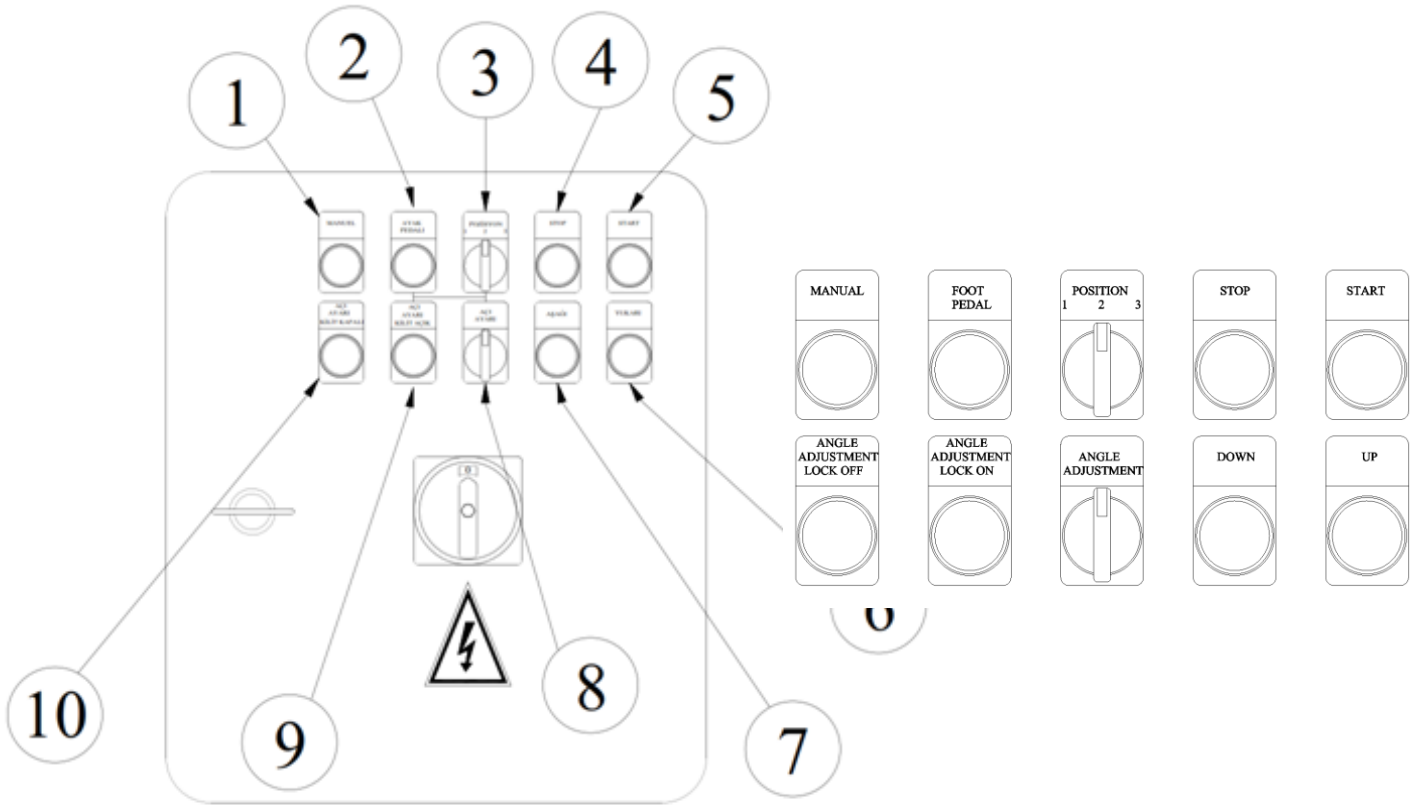
ADJUSTMENT

This machine is fully hydraulic control. Piston rod leads the upper blade moving up and down to cut workpiece.

Before using, check for oil and if necessary inject #32 or #46 hydraulic oil.

OVERALL DIMENSION





Button 1(MANUAL / MANUEL):The machine works with up&down buttons(No.6 and No.7)

Button 2(FOOT PEDAL / AYAK PEDALI):The machine works with foot pedal

Switch 3 : Can be chosen between the modes of the machine

3-1:The machine works in manual mode.

3-2:The machine works with foot pedal. Foot pedal needs to be pressed till the work is done.

3-3:The machine works with foot pedal in semi-auto mode. After pressing the pedal, blades do the notching processes and go back its idle position

Button 4(STOP):Stops the machine. If the red lamp is lit on, motor overload role could be in the progress. Please contact an elctrician or an authorised personel immediately.

Button 5(START): Starts the machine.

Button 6(UP / YUKARI): Upper-Blades move up in the manuel mode.

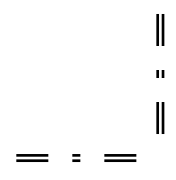
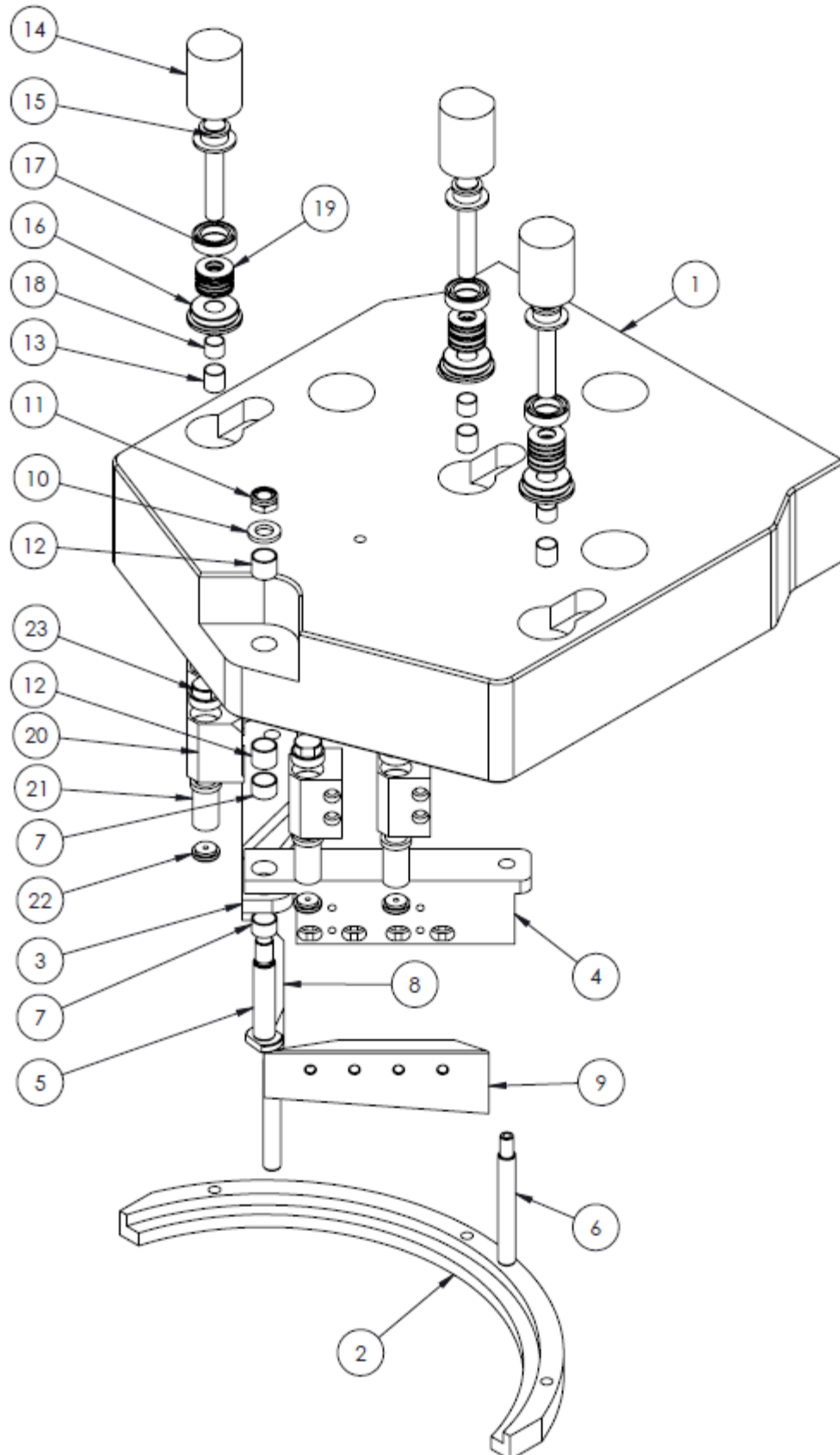
Button 7(DOWN/AŞAĞI): Upper-Blades move down in the manuel mode.

SSwitch 8(ANGLE ADJUSTMENT/AÇI AYARI): Angle mode adjustment switch. In position 1, the machine can be able to work in different angles. In position 2, the machine works in a fixed angle.

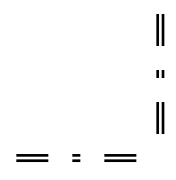
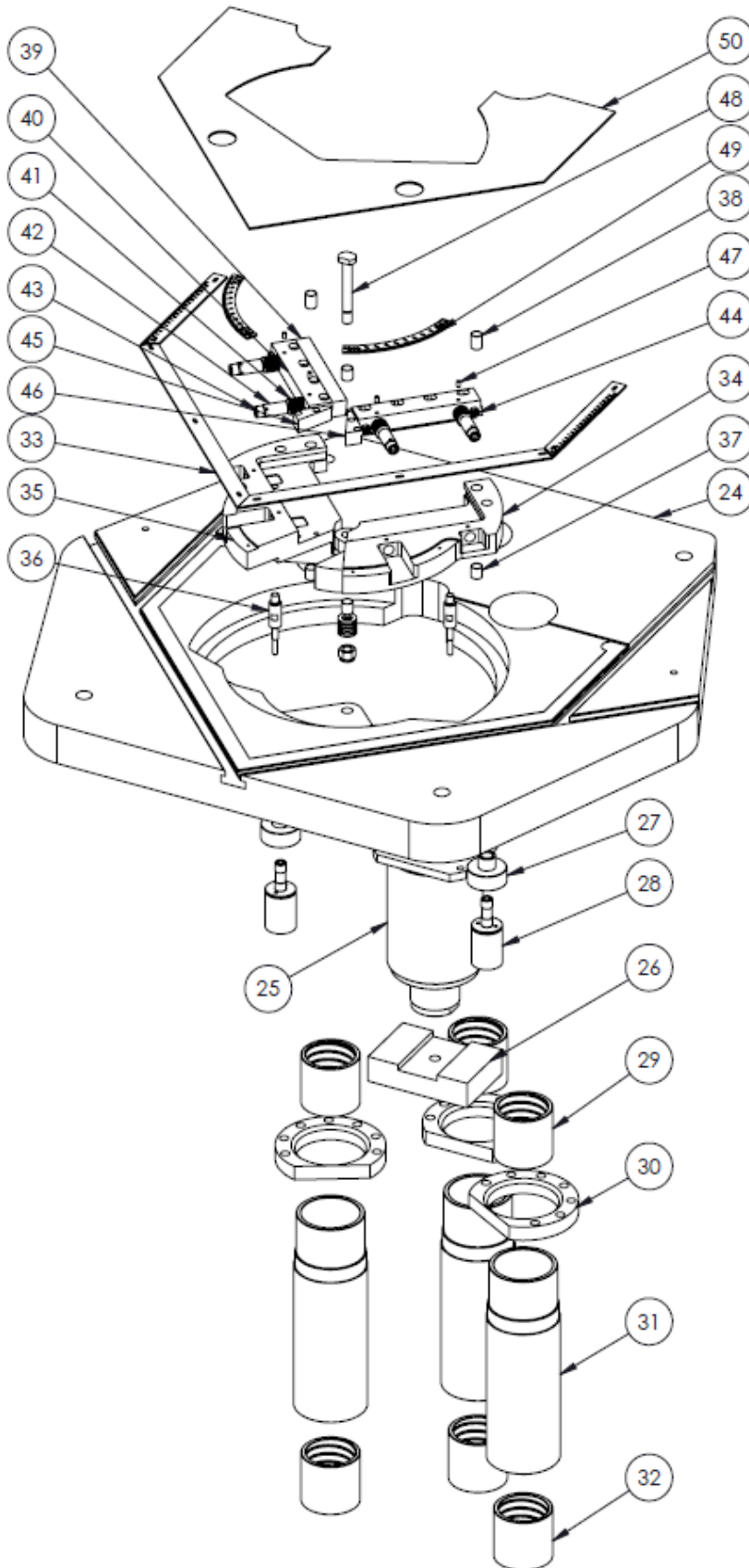
Lamp 9(ANGLE ADJUSTMENT LOCK ON/AÇI AYARI KİLİT AÇIK) : If lamp is lit on, it means that the machine works in **adjustable angle mode**. Operator can change the angle by using handwheels.

Lamp 10(ANGLE ADJUSTMENT LOCK OFF/AÇI AYAR KİLİT KAPALI): If lamp is lit on, the machine works in a **fixed angle** that is adjusted before.

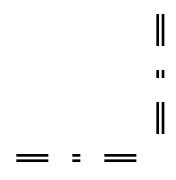
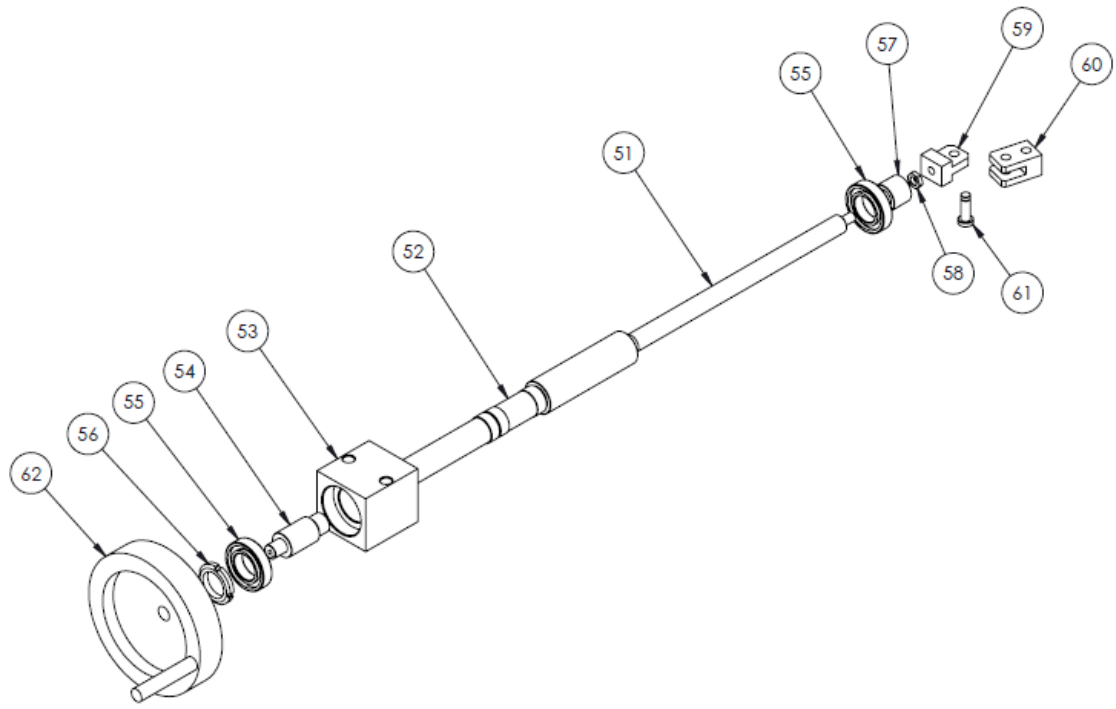
UPPER GROUP MONTAGE VIEW



LOWER GROUP MONTAGE VIEW



HAND WHEEL SYSTEM MONTAGE VIEW

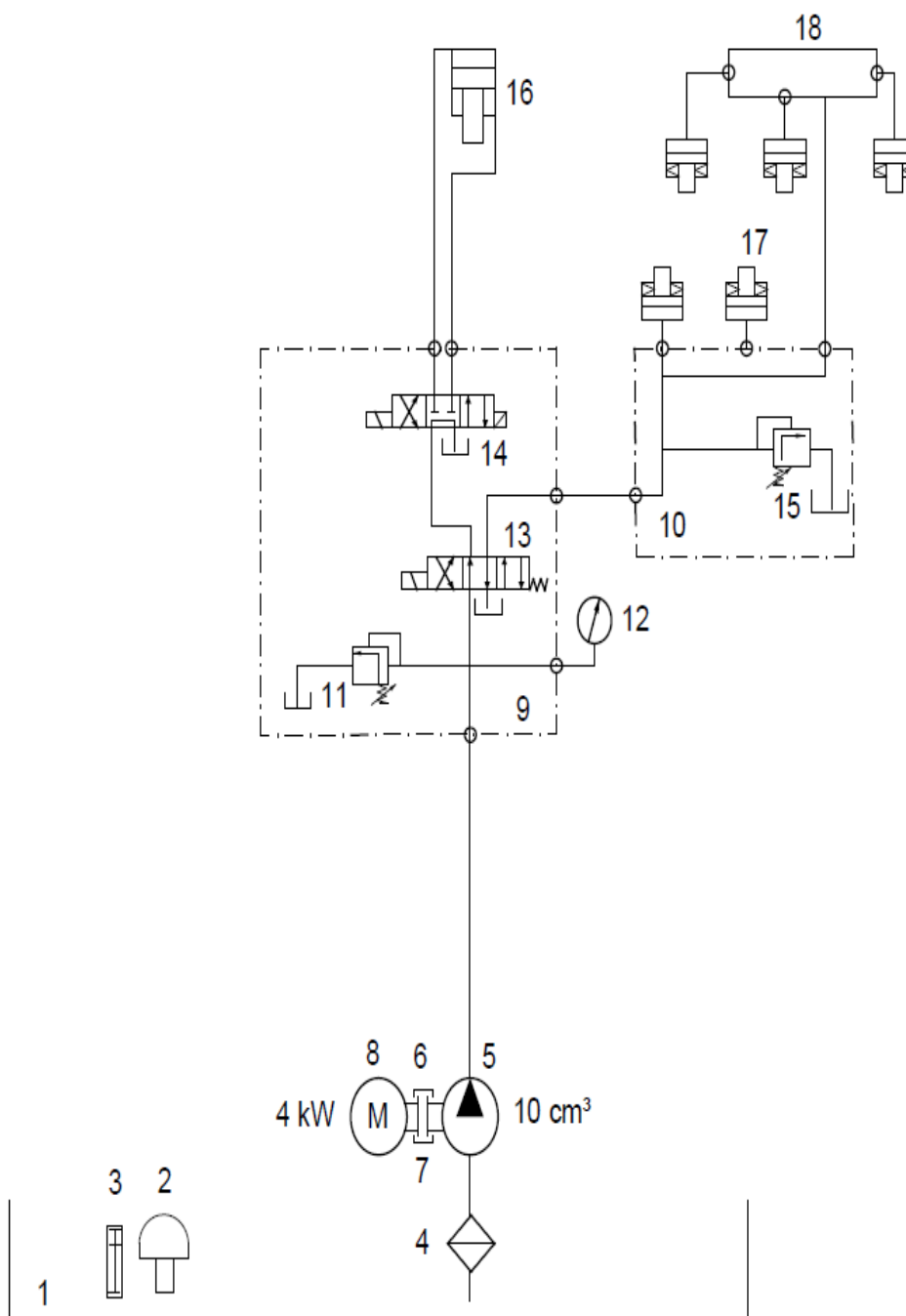


HYDRAULIC PART LIST

HNM 6V(p)

1	60 lt Hydraulic Tank
2	Hydraulic Tank Cap (Ø50)
3	76mm Oil Level Gauge
4	65 lt suction filter
5	10 cm ³ gear pump
6	1 K 250 Hydraulic Flange
7	DC 28 Ø28 1P1 Coupling
8	4 KW 1500 d/d B35 Motor 380 Volt
9	NG6 2'li Special Block
10	Safe-Distribution Manifold -4 directions
11	YF 08-09 1509 (Isitan) Safety valve
12	Ø63mm x 250 Bar Manometer
13	NG6 REsetting Valve 4WE6060 24 V
14	NG6 Open-Center Directinal Valve ADB 3E 04C MRS2
15	LNRV-08G-25-50/315 Safety valve
16	Double Effect Hydraulic Piston
17	Single Effect Hydraulic Piston
18	1/8' quatro Collector System

HNM 6V HÍDROLÍK PLANI - HYDRAULIC PLAN



||
..
||
== = ==