

# Surfex® SR

800 mm | 1000 mm | 1300 mm | 1600 mm

Perfect for manufacturers who need efficient deburring and surface refinement without heavy-duty deslagging, the Surfex® SR delivers a clean, uniform finish straight from upstream cutting processes. Designed as a must-have addition to sheet metal production lines, it enhances paint adhesion, improves part quality, and ensures a refined final touch with minimal processing.



## Essential Surface Finishing Add-On

- NDMF Finishing
- Edge Rounding
- DeBurring
- DeSlagging
- De-Oxidizing



EvoFlow® Conveyor System   Drum Head Module   Rotary Brushes Module   EvoGrit® 3.0 Abrasives   270° Rotary Console

### THE EVOTEC® DIFFERENTIATOR

#### Automated Abrasive Control

Automatically adjusts abrasive compensation, belt balancing, and tracking correction, ensuring consistent precision and efficiency with every pass.

#### AirLock® or MagniLock® System

Dual-action self-cleaning vacuum adsorption or optimized magnetic adsorption efficiently processes small workpieces while maintaining stable and reliable retention.

#### Smart Parameter Recall

Stores and retrieves pre-programmed process parameters, allowing operators to quickly recall settings for repeatable, high-accuracy processing.

#### Multi-Layered Safety Protection

Includes auto power cut-off, anti-pinch mechanisms, and a rapid 4-second emergency braking system, providing enhanced workplace safety.

#### Intelligent Maintenance Monitoring

AI-powered real-time monitoring providing intelligent maintenance alerts to maximize uptime and efficiency.

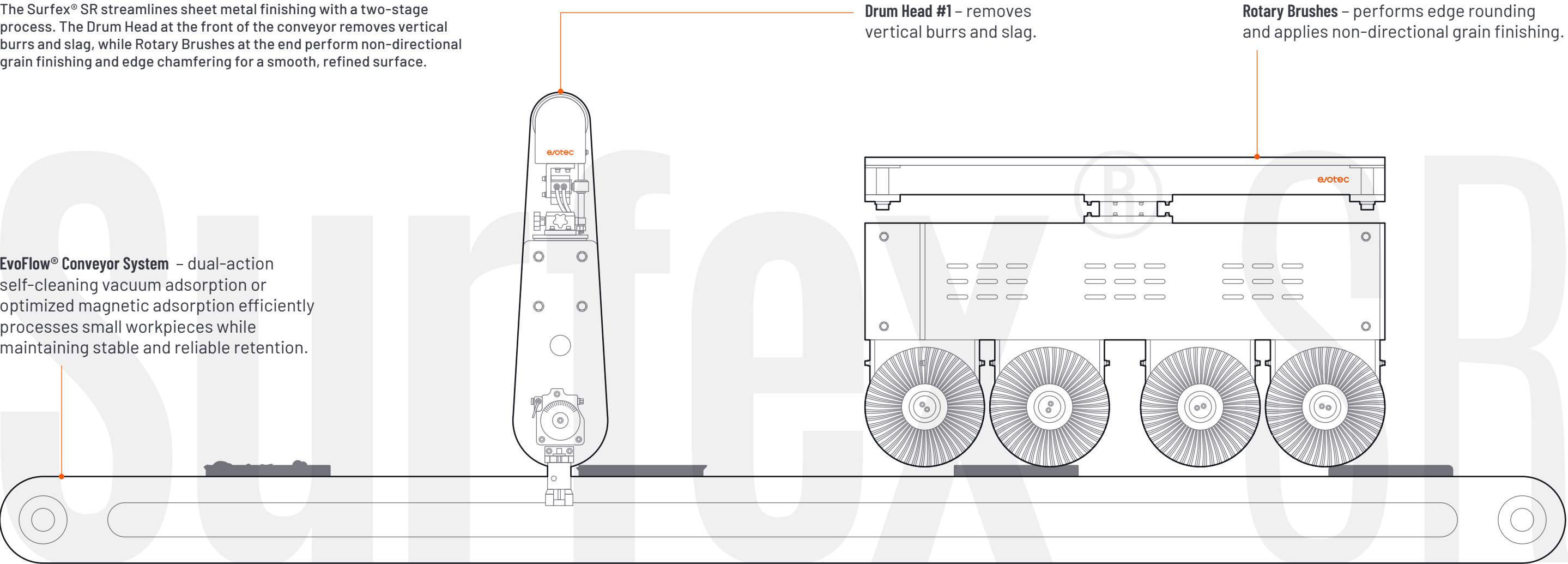
#### Instant Operational Readiness

Designed for seamless deployment, evotec® machines require no complex setup—just plug them in, power up, and start processing immediately.

### CONFIGURATION

The Surfex® SR streamlines sheet metal finishing with a two-stage process. The Drum Head at the front of the conveyor removes vertical burrs and slag, while Rotary Brushes at the end perform non-directional grain finishing and edge chamfering for a smooth, refined surface.

**EvoFlow® Conveyor System** – dual-action self-cleaning vacuum adsorption or optimized magnetic adsorption efficiently processes small workpieces while maintaining stable and reliable retention.



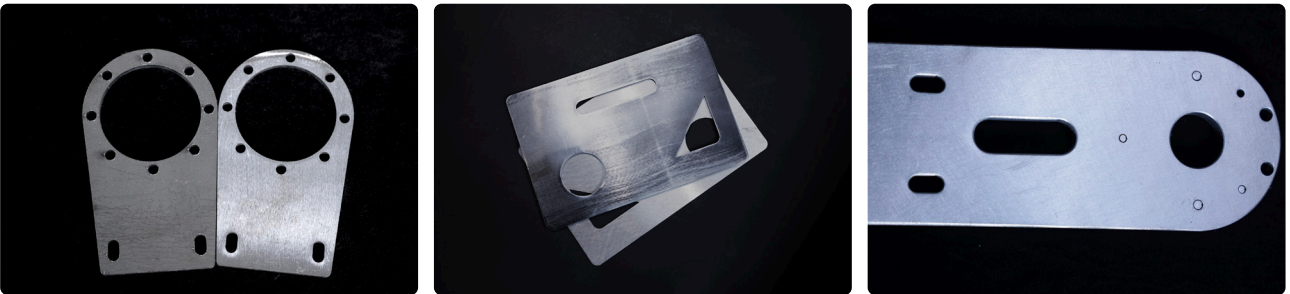
### CUSTOMIZATION CAPABILITIES

evotec® machines offer a range of configurable options, allowing manufacturers to adapt their equipment for specific processing needs. From dust extraction to modular abrasive configurations, each customization enhances performance and optimizes workflow efficiency.

Wet Extraction System	Optional add-on
Dust-removal Workpiece Retention Mechanism	evotec® AirLock® or MagniLock® System
Flexible Abrasive Module Configuration	±1 Drum Head
Conveyor Self-cleaning Module	Electric Rolling Brush
Dual-sided finishing	Revolving Line Solution

### SAMPLES

**Processable Materials:** Stainless steel, carbon steel, aluminum, brass and cold plate



See the precision and consistency of evotec®'s finishing solutions in the samples above. We tailor our finishing solutions to meet the unique requirements of each production line, ensuring optimal results for various materials and applications. Connect with our sales team to discuss your specific needs and request a sample run to experience the evotec® difference firsthand.

### SPECIFICATIONS

Model	SR 600	SR 800	SR 1000	SR 1300	SR 1600
Max. Workpiece Width	600 mm	800 mm	1000 mm	1300 mm	1600 mm
Conveyor Belt Speed	1 - 7 m/min	0.5 - 7 m/min	0.5 - 7 m/min	0.5 - 7 m/min	0.5 - 7 m/min
Max. Table Load Capacity	200 kg	300 kg	500 kg	700 kg	700 kg
Min. Workpiece Size (W × L)	30 × 30 mm	50 × 50 mm	50 × 50 mm	50 × 50 mm	50 × 50 mm
Max. Workpiece Height	1 - 100 mm	0.5 - 100 mm	0.5 - 100 mm	0.5 - 100 mm	0.5 - 100 mm
Abrasive Belt Dimensions (L × W)	1900 × 650 mm	1900 × 820 mm	2200 × 1020 mm	2200 × 1320 mm	2200 × 1320 mm
Rotary Brushes (Multiple)	300 <sup>2</sup> × 40 (mm. set of 4)	300 <sup>2</sup> × 40 (mm. set of 4)	300 <sup>2</sup> × 40 (mm. set of 6)	300 <sup>2</sup> × 40 (mm. set of 8)	300 <sup>2</sup> × 40 (mm. set of 8)
Electrical Input	380 V   50 Hz 100 A	400 V   50 Hz 100 A	400 V   50 Hz 120 A	400 V   50 Hz 180 A	400 V   50 Hz 200 A
Rated Power Consumption	14 kW	32 kW	38 kW	60 kW	65 kW
Machine Dimensions (L × W × H)	2.5 × 1.4 × 2.10 m	2.9 × 1.65 × 2.25 m	3.2 × 1.85 × 2.25 m	3.7 × 2.25 × 2.3 m	3.7 × 2.25 × 2.3 m
Machine Weight	1800 kg	2600 kg	3000 kg	4500 kg	5500 kg
Upstream Processes	Laser cutting, flame cutting, waterjet cutting, NTC punching, and die casting				
Downstream Processes	Bending, forming, welding, powder coating, painting, and assembly				



HEADQUARTERS

2358, Renmin West Road  
Hengshui, Hebei 053000, P.R.C.  
Commercial@evotecgroup.com  
Evotecgroup.com

**Disclaimer:** The data regarding dust extraction efficiency and energy savings are based on internal testing and experiments conducted at our factory. These values represent estimated performance under standard operating conditions. Actual performance may vary depending on specific usage, maintenance, and environmental factors.

The evotec® AirLock® is designed for processing copper, aluminum, stainless steel, and carbon steel. To ensure proper holding, the minimum workpiece size must be at least 50 × 50 mm, with no perforations, holes, or slots, and a maximum thickness of 3 mm. For the evotec® MagniLock®, the minimum processable workpiece size is ≥ 10 × 10 mm.

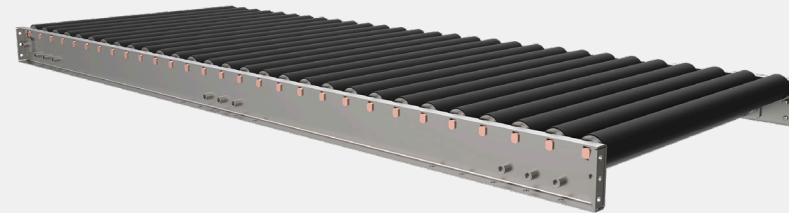
To ensure continuous improvement, specifications, features, configurations, and product designs are subject to change without prior notice. evotec® reserves the right to modify machine designs, components, and technical details to enhance efficiency, durability, and overall functionality. For the latest specifications and customization options, please contact our team.

# evotec® Three Core Technologies



## EvoGrit® 3.0 Abrasives – Engineered for Toughness. Built to Last.

EvoGrit® 3.0 Abrasives are engineered for maximum durability, delivering consistent, high-quality finishes across all evotec® sanding and brushing heads. Designed for long-lasting use, these abrasives reduce the frequency of replacements, cutting operational costs. Available in exclusive configurations for Drum Heads, Rotary Brushes, and Top Brushes, they provide precise deburring, slag removal, and flawless surface finishes with every pass.



## EvoFlow® Conveyor System – Fixed in Place. Perfect in Finish.

The The EvoFlow® Conveyor System ensures precise workpiece retention using either AirLock® Vacuum Retention or MagniLock® Magnetic Holding. AirLock® features powerful suction and a self-cleaning dust system to securely hold small workpieces, maintaining a clean operation. Alternatively, MagniLock® uses high-strength NdFeB magnets for superior retention of ferrous materials and includes an integrated cleaning system to ensure consistent performance.



## EvoTrack® MCS – Intelligent Control. Precision Execution.

EvoTrack® MCS powers evotec®'s automation, ensuring precise parameter recall, real-time monitoring, and optimized processes. Adaptive automation adjusts abrasives and belt tracking for consistent performance, while smart memory recall stores parameters for repeatable results. With Predictive maintenance, the system minimizes downtime by providing proactive alerts, maximizing uptime and efficiency.



## Efficiency that Empowers

evotec® combines over 42 years of industry expertise with cutting-edge automation to redefine deburring, edge rounding, and surface finishing. With an 800,000 M<sup>2</sup> super factory, a global workforce of 1,800+ professionals, and dedicated R&D centers, evotec® is built for high-performance manufacturing. Our global presence spans offices in Germany, Turkey, Hungary, Hong Kong, Mainland China, Japan, the United States, Mexico, and Brazil, enabling us to deliver precision and innovation across the world.

800k+ M <sup>2</sup>	2k +	8 +	1.8k +	2 +	100 +
manufacturing facility	machines delivered yearly	global offices	employees worldwide	technology centers	dedicated R&D engineers



## The Step Up

We empower manufacturers to work smarter, not harder. By automating repetitive tasks and streamlining workflows, we free up time for what truly drives progress —creativity, innovation, and precision engineering. Our intelligent systems ensure every edge is perfected, every surface refined, and every process optimized, delivering efficiency without compromise.

*"The SR has been a seamless addition to our laser cutting shop. We set it up, ran our first batch, and instantly saw the difference—slag and burrs removed in one pass, no extra steps needed. It delivers clean, refined parts right off the line, saving us time and eliminating manual touch-ups. It's efficiency made simple."*

 **Mark Jensen, Operations, Westfield Fabrication**



# Surfex® SR

## SHEET METAL FINISHING

Essential Finishing Add-On for  
Streamlined Sheet Metal Fabrication

