

INSTRUCTIONS FOR USE AND MAINTENANCE

SLING-LINE 3

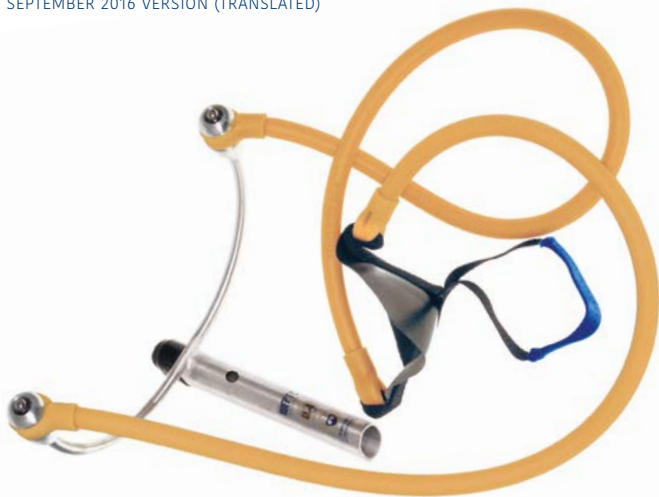
CATAPULT

REF.

FTC/SL3-FEP

SERIAL NUMBER

SEPTEMBER 2016 VERSION (TRANSLATED)



FTC
PLAY WITH GRAVITY

1355, chemin de Malombre • Z.I. Les Plaines
26780 MALATAVERNE • FRANCE • (+33) 475 528 640
contact@ftc-tree.com • www.ftc-tree.com

DATE OF PURCHASE	
FIRST DATE OF USE	
SERIAL NUMBER	

1 TECHNICAL DATA

Weight	1,07 kg
Maximum load	500 g
Minimum load	250 g
Throw height	+/- 35 m (with 300 g throwbag and Stiffline)



NEVER LAUNCH WITHOUT THROW BAG (the elastic tubes can deteriorate)

2 EQUIPMENT DESCRIPTION

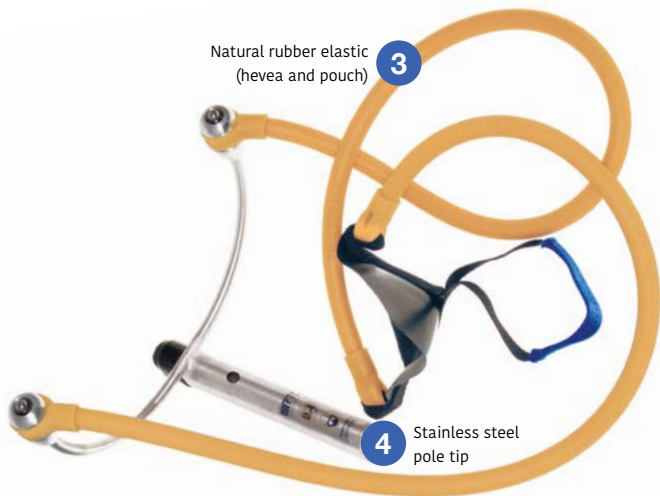
2.1 • HEAD

1 Storage bag



Instructions 2





Natural rubber elastic
(hevea and pouch)

3

4

Stainless steel
pole tip

2.2 • POLE

Only the two lower sections (the largest ones) should be extended.
Never completely extend the upper section.

2.3 • MARKINGS AND LABELS



Safety glasses
and helmet mandatory



Read the
instructions

3 USE

In tree care, the SLING-LINE 3 is used to set up a climbing rope (or access rope) by propelling a throwbag with a throwline.

In rope access or working-at-heights jobs, it can also be used to set up ropes over various obstacles.

The SLING-LINE 3 must be used:

- While wearing protective equipment (safety helmet and glasses) complying with the current labour regulations.
- With throwbags and lines having compatible characteristics (see Chapter 1, Technical data).
- By trained and competent people, and in respect of the manufacturer's and/or seller's recommendations
- Only after having read and understood these instructions.



UNDER NO CIRCUMSTANCES SHOULD THIS PRODUCT BE USED TO LAUNCH LOADS OR OBJECTS OTHER THAN THROW BAGS ATTACHED TO A LINE.

4 TRANSPORT / CARE / STORAGE

4.1 • TRANSPORT

Shocks and other poor treatment can deform or weaken a SLING-LINE's pole and head, causing serious, and even invisible, damage. During transport and use, take the necessary precautions.

Sunlight, grease and oil can cause cracks and significantly increase wear, reduce the rubber tube's performance, and make it fragile and dangerous.

Do not expose the rubber tube to the sun. Do not place in contact with hydrocarbons or other corrosive materials. Protect both head and rubber tube from sunlight.

4.2 • CLEANING / CARE

Head: Clean water less than 40°C, clean cloth, mild detergent.

Pole: Clean water, clean cloth, mild detergent.

4.3 • STORAGE

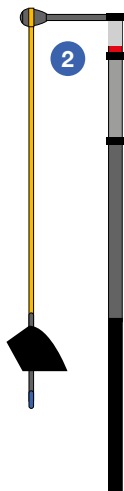
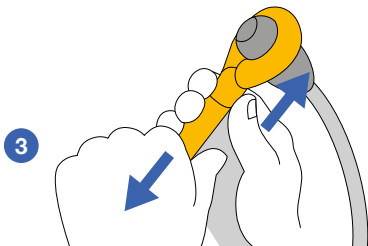
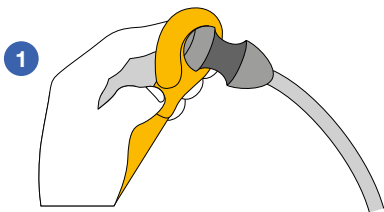
In a dry place, free from exposure to light; weather; shocks; crushing; heat sources more than 40°C; hydrocarbons and other acidic, aggressive or corrosive materials capable of damaging it and/or reducing its technical performance.

When working, do not leave the head exposed to the sun. Place it back in its storage bag away from the light as quickly as possible.

4.4 • REPAIRS

Replacing the elastic:

- Wet the rubber tube with soapy water.
- Position the inclined part of the pouch away from the pole **2**
- Place the eyes of the new tubes around the sheaves **1** taking care to line up the pouch properly **2**
- Close each eye by tightening it using both hands **3**



5 SAFETY INSTRUCTIONS

5.1 • READ THE INSTRUCTIONS

If you have any questions or need additional information, please contact your seller.

5.2 • INSPECT BEFORE AND DURING USE

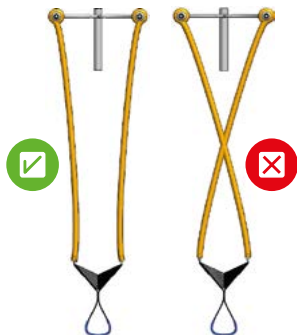
- The competence of the users.
- Wearing of safety helmets and safety glasses by the user and any person that can be indirectly endangered by the launching.
- Set up of a sufficient safety perimeter around the launch area.
- Legibility of symbols (see Chapter 2.3 Markings and labels).
- Good condition of the rubber tubes (no cuts or cracks).
- Correct attachment of the pole (push button and spring clips).
- Protect infrastructures that can break upon impact with throw bag (windows, roof shingles, car, etc.).



**WARNING! AFTER LAUNCHING,
THE RUBBER TUBES CAN TWIST.**

**TURN THE SHEAVES IN ORDER
TO REPOSITION THE TWO
TUBES.**

(see illustrations)



**NEVER BEGIN WORK IF ANY ONE OF THESE FACTORS
IS NOT RESPECTED.**

6 INSTRUCTIONS FOR USE

The SLING-LINE 3 head can be used with the following telescopic poles: Silky Hayauchi (version with 3 elements), ARS Xp-5.5 and Berger 74800 (with an adaptor, not provided here).

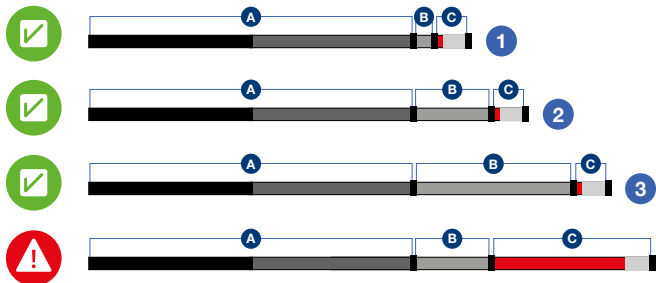


6.1 • ATTACHING THE SLING-LINE 3 HEAD

- Open the small part of the pole a few centimetres in order to pull out the second push button and let it rest against the upper clasp. Clip the red clasp in place.
- Fit the SLING-LINE 3 head to the same part. The front pouch must be located on the opposite side of the red clasp.

6.2 • EXTENDING THE POLE

- Never extend the upper part **C** all the way (this section is exclusively reserved for attaching the other accessories).
- To use the launcher, only the pole's middle section **B** should be extended.
- Three lengths are possible (example with Silky pole).
- For short trees, extend to the first hole **1**
- For medium-sized trees, extend to the second hole **2**
- For taller trees, extend to the third hole **3**



6.3 • POSITIONS FOR LAUNCHING

- The foot of the pole must be on the ground.
- The launching pole must be positioned between the user and the pouch.
- The throwline must be neatly placed more than 1.5 m in front of the foot of the pole.
- The throwbag's centre of gravity must be positioned in the centre of the pouch and the throwline must be towards the front.

6.4 • PULLING THE ELASTIC

Pull the rubber tubes, positioning four fingers on the pouch's blue strap (two left-hand fingers and two right-hand fingers). The pole's axis will aim and direct the launch.

