

INSTRUCTIONS FOR USE AND MAINTENANCE

STIFFLINE THROWLINE

LENGTH			
FIRST DATE OF USE			
DATE OF PURCHASE			
REF. STIFFLINE YELLOW	DIAMETER	1.8 mm	FTC/FDJ 18
REF. STIFFLINE BLUE	DIAMETER	1.8 mm	FTC/FDB 18
REF. STIFFLINE YELLOW	DIAMETER	1.6 mm	FTC/FDJ 16
REF. STIFFLINE GREEN	DIAMETER	1.6 mm	FTC/FDV 16

JULY 2017 VERSION (TRANSLATED)



1355, chemin de Malombre • Z.I. Les Plaines
26780 MALATAVERNE • FRANCE • (+33) 475 528 640
contact@ftc-tree.com • www.ftc-tree.com

1 TECHNICAL DATA

Diameter	1.6 mm	1.8 mm
Minimum	220 daN*	250 daN*
Weight per	1.58 g	1.92 g
Weight for 50 m	80 g	96 g
Materials	Dyneema cover, polypropylene core	

Length: with coloured ends, 40 cm without core, breaking fuse point 16 cm from each end (about 80 daN).

*1 daN (dekanewton, a measure of force) is equal to 1 kg.

2 USE



THIS MATERIAL IS NOT PPE. UNDER NO CIRCUMSTANCES SHOULD IT BE USED FOR BELAYING.

- The STIFFLINE is used for throwing bags in tree care.
- It is used to set up ropes (access, climbing and rigging ropes), cambium saver etc.
- Its solidness and reliability allow many technical tricks: retrieving cambium savers, breaking ddead branches from the ground, lifting gear into the tree etc.

THIS EQUIPMENT MUST BE USED:

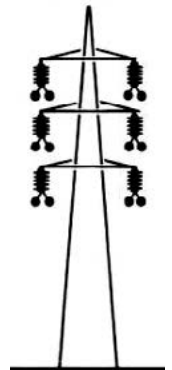
- By trained and/or competent people.
- After verifying its condition and functioning.
- In full respect of the manufacturer's instructions.
- With equipment having the same size and resistance properties.
- **With gloves to avoid burns and cuts.**



FTC CANNOT BE HELD RESPONSIBLE FOR ANY DIRECT, INDIRECT, OR ACCIDENTAL CONSEQUENCES OR ANY OTHER TYPE OF DAMAGE THAT ARISES DURING USE.



TAKE THE NECESSARY PRECAUTIONS WHEN THROWING NEAR ELECTRIC POWER LINES.



3 CARE / STORAGE

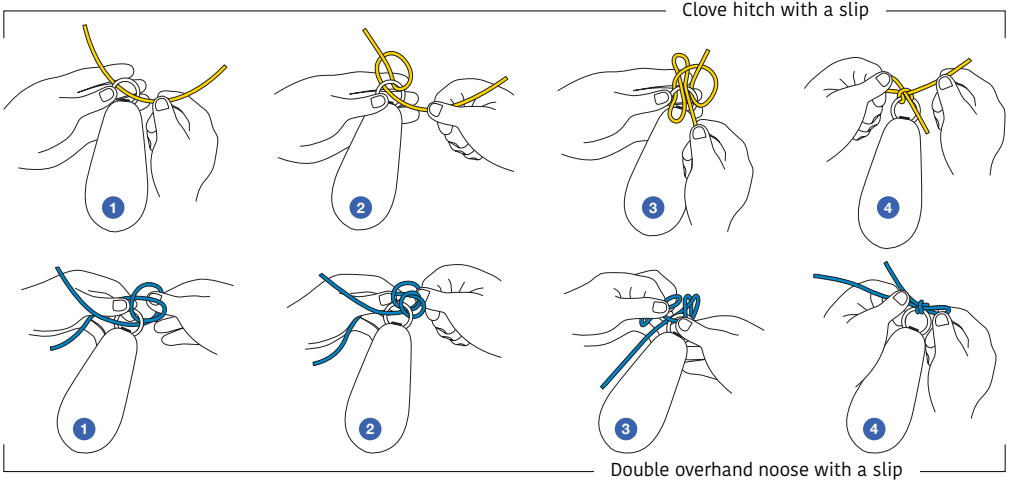
- Avoid putting the product in contact with heat sources and abrasive, acidic or corrosive materials that can damage it or reduce its technical performance (fuel, dirt, mud, sand etc.).
- Store it in a dry, ventilated place away from light and any heat source higher than 40°C. During use or when putting away, do not excessively twist or fold the line in order to avoid bends in the core.
- Do not make knots along the line. This damages the ease of its movement.
- Can be washed with delicate washing powder at a maximum temperature of 30°C. Air dry without exposing to the sun.
- To increase ease of movement, it can be sprayed with teflon.

REPAIRS AND CARE:

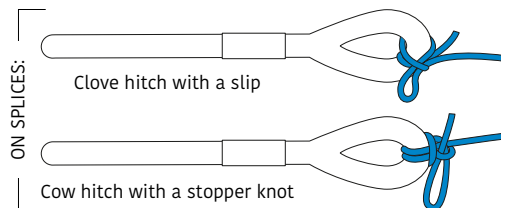
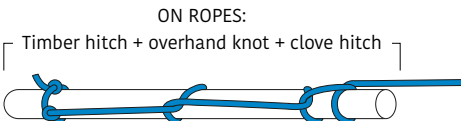
- Preparation of the ends if the breaking fuse point or throwline breaks.
- To make an end more flexible for tying around throwbags or ropes, cut off approximately 40 cm of the core.
- To make a breaking fuse, see chapter 4.

4 EXAMPLES OF USE

KNOTS FOR ATTACHING THROWBAGS

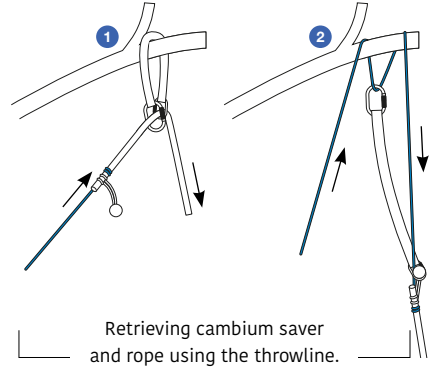
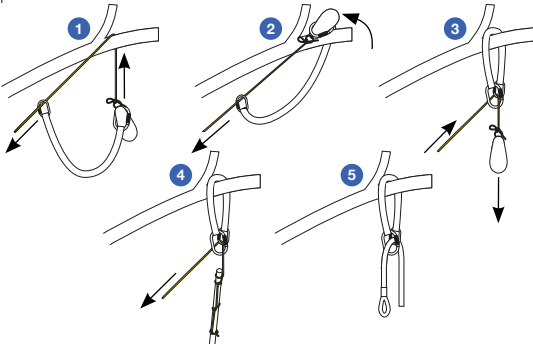


KNOTS FOR ATTACHING ROPES

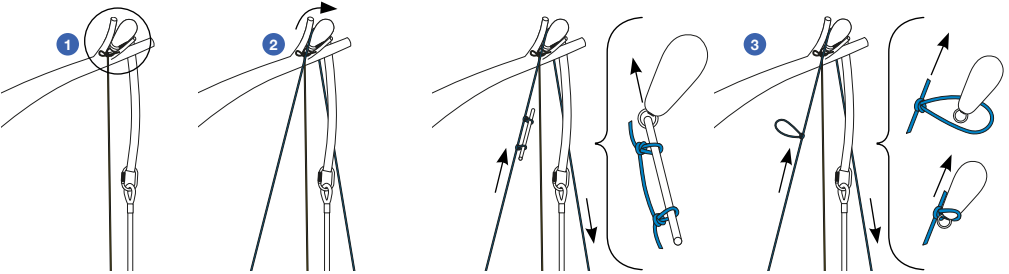


SETTING UP CAMBIUM SAVER

Setting up cambium saver and then rope from the ground.

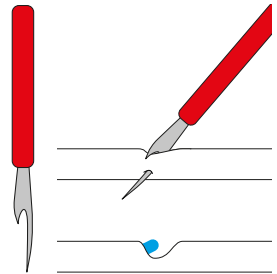


UNHOOKING A STUCK CAMBIUM SAVER



BREAKING POINT

To make a fuse point (deliberate breaking point in case the bag is stuck), cut a bit more than half of the line approximately 16 cm from the end. Use a seam ripper or any other cutting tool (see illustration). By doing this, the line's resistance will be less than 100 kg.



1355, chemin de Malombre • Z.I. Les Plaines
26780 MALATAVERNE • FRANCE • (+33) 475 528 640
contact@ftc-tree.com • www.ftc-tree.com