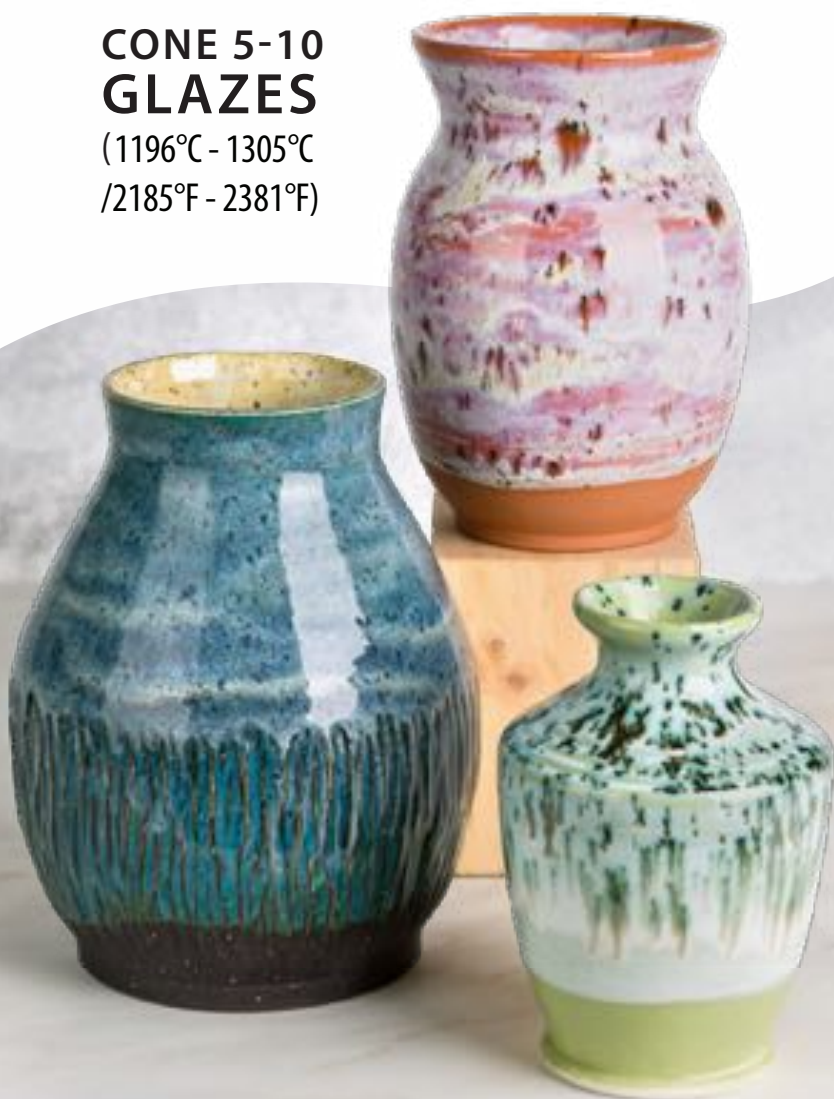




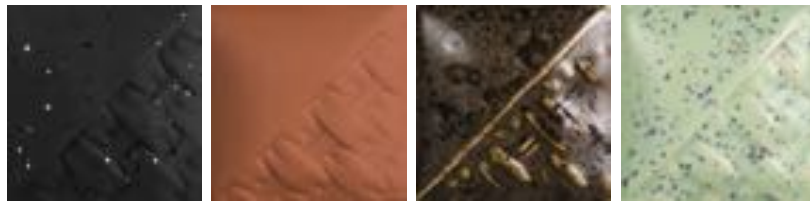
STONEWARE

**CONE 5-10
GLAZES**

(1196°C - 1305°C
/2185°F - 2381°F)



New Glazes!




 **EG006** Sparkle Black Engobe
 **EG007** Terracotta Engobe
SW220 Black Timber
SW221 Mint Speck





 **SW222** Green Jasper
 **SW223** Milk Glass
SW224 Tropical Teal
SW514 Sage Gloss



SW515 Aqua Gloss
 **SG303** Citrus Snow Gem
 **SG304** Berry Snow Gem
 **SG305** Spearmint Snow Gem

 **Dinnerware Safe:** Indicates the fired glaze surface is chemically durable and is free of surface characteristics that could potentially trap bacteria.

 **Dinnerware Safe with Clear Glaze:** Fired surface is Dinnerware Safe when a clear glaze or another Dinnerware Safe glaze is applied on top, creating a sealed and chemically durable finish.

 **Not Dinnerware Safe:** Not recommended for dinnerware as the fired finish is either not chemically durable or has surface characteristics that could potentially trap bacteria. Recommended for the outside of a dinnerware piece, below the lip line or for ornamental use only.

Visit [MaycoColors.com/Resources/Dinnerware-Food-Safety](https://www.mayco.com/Resources/Dinnerware-Food-Safety) for more information.

Cover pieces on white stoneware clay, fired to cone 6 oxidation (1222°C/2232°F):

1. SW169 Frosted Lemon over SW224 Tropical Teal on EG006 Sparkle Black Engobe
2. SW223 Milk Glass over SW155 Winter Wood on EG007 Terracotta Engobe
3. SW222 Green Jasper over SW514 Sage Gloss

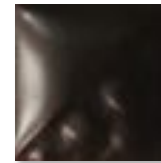
Stoneware glazes offer the depth, sophistication and reliability to artists working from mid-range to high-fire temperatures. Many glazes will break over textures, revealing secondary colors and shades. The choice of clay body, thickness of glaze application, firing process and temperature will affect the fired results.




 **SW100** Blue Surf



 **SW101** Stoned Denim



 **SW104** Black Walnut



 **SW105** Frost Blue



 **SW106** Alabaster



 **SW107** Dunes



 **SW108** Green Tea



 **SW109** Capri Blue



 **SW110** Oyster



 **SW111** Wrought Iron




 **SW112** Tiger's Eye



 **SW113** Speckled Plum



 **SW115** Midnight Rain



 **SW116** Robin's Egg



 **SW117** Honeycomb



 **SW118** Sea Salt



 **SW119** Cinnabar



 **SW120** Northern Woods



 **SW121** Smoke



 **SW122** Maycoshino



 **SW123** Sapphire



 **SW127** Olive



 **SW128** Cordovan



 **SW129** Copper Float



 **SW130** Copper Jade

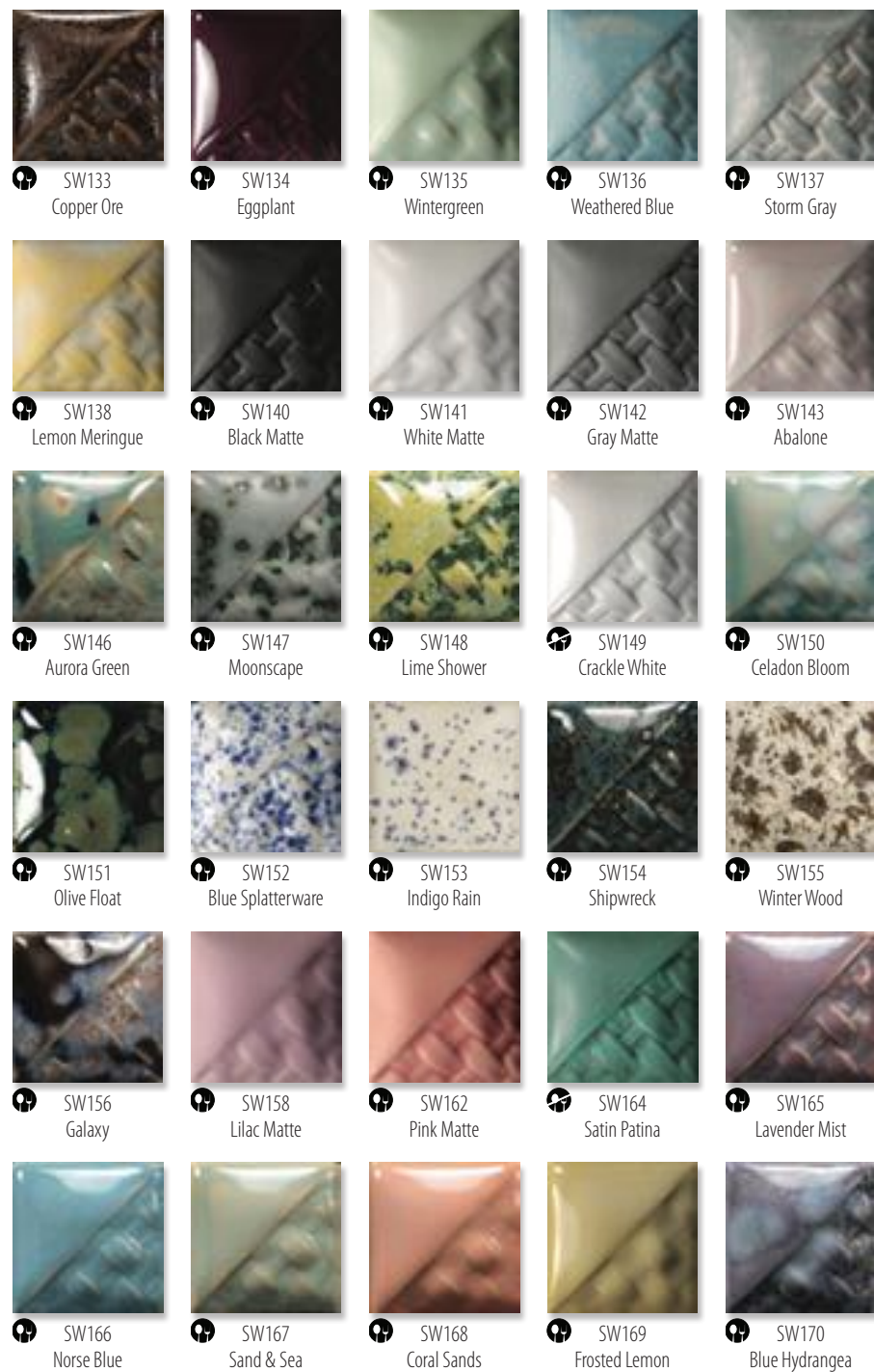


 **SW131** Birch



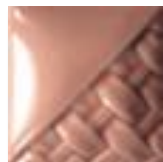
 **SW132** Mirror Black

Chips shown have been fired to cone 6 oxidation (1222°C/2232°F) on white stoneware body.
 Stoneware firing range cone 5 - 10 (1196°C - 1305°C / 2185°F - 2381°F).

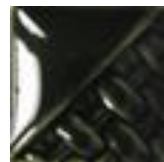




SW204
Amber Topaz



SW205
Coral



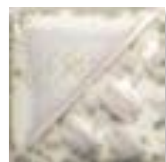
SW210
Emerald



SW211
Glacier Blue



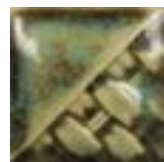
SW212
Peacock



SW214
Micro Pearl



SW215
Micro Champagne



SW216
Micro Jade



SW217
Micro Cerulean



SW218
Micro Ash



SW219
Opal Lustre



SW220
Black Timber



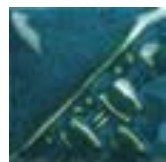
SW221
Mint Speck



SW222
Green Jasper



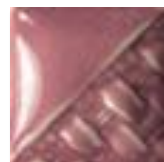
SW223
Milk Glass



SW224
Tropical Teal



SW250
White Opal



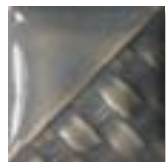
SW251
Pink Opal



SW252
Blue Opal



SW253
Green Opal



SW255
Gray Opal

Used alone, stoneware glazes produce beautiful color variations; one coat will allow the clay body to show through the glaze and two to three coats deepen the color.

Tips for Micros (SW214 - 218)

- Micro is short for micro-crystalline which is a glaze that develops small crystallization from the zinc and silica during the cooling process. These glazes can be fired from cones 5-10, but we suggest a hot cone 6 with a fast cool in a loosely packed kiln for optimum crystallization.
- While Mayco's Stoneware Crystal glazes contain glass frit in the jar, Micros do not contain a glass crystal, rather, the effect is created by the glaze itself during the firing process.

Tips for Crystals

- Crystal glazes are designed to expand upon the surface with dazzling bursts of color.
- Crystals will settle to the bottom of the jar and will need thorough mixing prior to initial use and in between each coat.
- Apply two to three coats using a fan brush. While the glaze is wet, use your brush to redistribute crystals to achieve balanced coverage. Over-application of the crystals can cause pinholing or running.
- Crystals can create movement. Avoid having a heavy concentration of crystals near the bottom of your piece.

STONEWARE GLOSS

Stoneware Gloss glazes can be used in design, all over coverage and are the ideal product for intermixability at mid-range temperatures. The integrity of your design will remain unchanged as these glazes are incredibly stable and will not move or combine with surrounding colors.



SW501
White Gloss



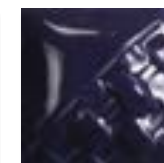
SW502
Yellow Gloss



SW503
Orange Gloss



SW504
Red Gloss



SW505
Purple Gloss



SW506
Bright Blue Gloss



SW507
Bright Green Gloss



SW508
Black Gloss



SW509
Dark Green Gloss



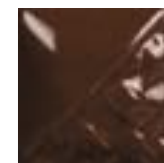
SW510
Blue Gloss



SW511
Pink Gloss



SW512
Coral Gloss



SW513
Brown Gloss



SW514
Sage Gloss



SW515
Aqua Gloss

STONEWARE CLEAR

Mayco Stoneware Clear glazes will preserve and enhance the surface of your work.

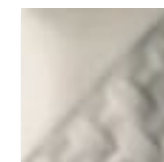
SW001 Clear is formulated for mid-range temperatures up to cone 10 (1305°C / 2381°F).

SW002 Matte Clear fires to a satin matte finish at cone 5/6 (1196°C - 1222°C / 2185°F - 2232°F) and will become more satin at cone 10 (1305°C / 2381°F).

SW004 Zinc-Free Clear is designed for use on products containing chrome-based pigments to ensure that you will get a smooth and clear surface.



SW001
Clear



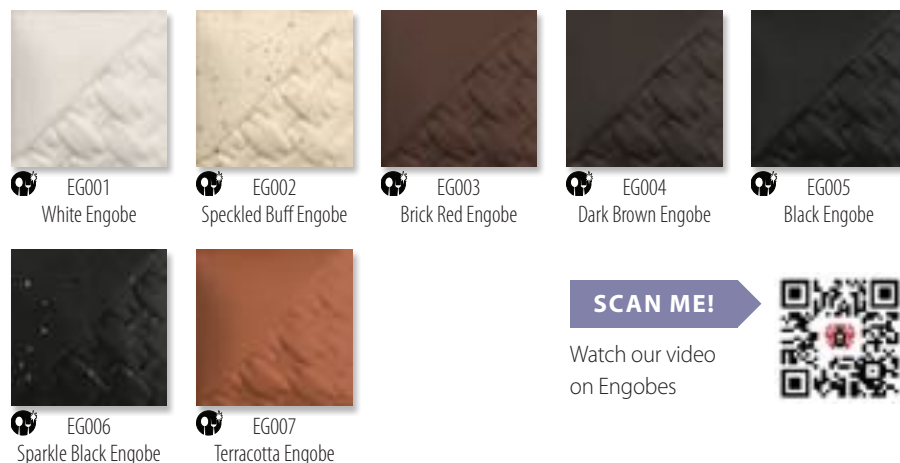
SW002
Matte Clear



SW004
Zinc-Free Clear

ENGOBES

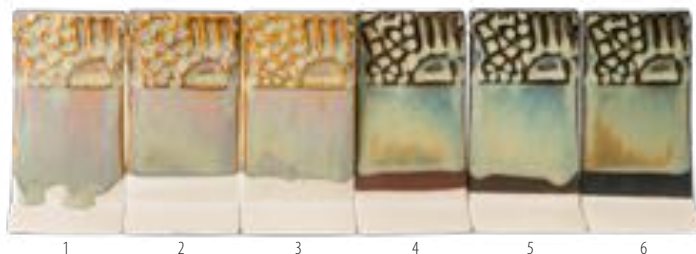
Engobes are a hybrid of slip, glaze and underglaze, used to coat your clay body to your preferred finish/color and are often used for a variety of decorative techniques, such as sgraffito and majolica. They can be applied to wet clay, greenware or bisque and fire from cones 5-10.



Engobes can affect the glaze outcome, as shown below at cone 6 (1222°C / 2232°F):

SW219 Opal Lustre over:

1. Plain white bisque
2. EG001 White Engobe
3. EG002 Speckled Buff Engobe
4. EG003 Brick Red Engobe
5. EG004 Dark Brown Engobe
6. EG005 Black Engobe



Tips for Engobes

- Engobes are used to change the color of your clay color surface without cross contamination and provide easy clean up in your studio.
- The engobes will not stick to kiln shelves when 2 coats are applied, but this result can vary based on the kiln wash you have. ACO01 Mayco Kiln Wash is recommended.
- Engobes will impact glaze results when used as a base.
- Engobes tend to impact flow of glazes.
- We recommend 2 coats of each glaze when using in combination.
- Can use on alternative clay bodies.
- Fires matte. Apply clear glaze to intensify color or for use on dinnerware.
- Can be used in oxidation or reduction firings. Results may vary.
- Do not overbrush/work the **Speckled Buff Engobe (EG002)** to prevent smearing of the specks. The specks may show when used under a sheer glaze but may not show through when using an opaque glaze.
- **Sparkle Black Engobe (EG006)**: To enhance the sparkle and improve texture, use your fingers to burnish/polish the surface of the ware before the last layer is dry. Polishing is not needed when used in combination. We recommend SW004 Zinc-Free Clear for a black finish.

STONEWARE SPECIALTY

Recommended for ornamental use only.

Crackle glazes (SW003 and SW149) will develop a crackle pattern with 2-3 coats. To fill in the cracks, wipe back acrylic or ink after firing.

Mudcrack glazes (SW403 and SW404) have a highly texture raised and cracked surface. Mudcrack can be directly applied to bisqueware or in combination with other mid-range glazes.

Magma glazes (SW405 and SW406) have a rough, cratered surface. The thicker the application of Magma and Mudcrack, the more textured the surface. Magma and Mudcrack can be directly applied on bisqueware or in combination with other mid-range glazes. Can be tinted by layering with Stoneware Gloss glazes and Washes.

Snowfall (SG302) creates a white, textured surface. Stable and consistent at all firing temperatures. Can be tinted with Stroke & Coat®, Foundations®, or underglazes.

Snow Gems (SG303-305) create a white, textured surface with small colorful crystals. Stable and consistent at all firing temperatures. Can be tinted with Stroke & Coat®, Foundations®, or underglazes.



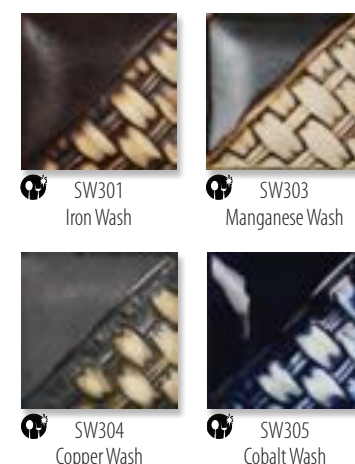
WASHES

Mayco Washes are highly concentrated metallic glaze colorants formulated for ease of use and versatility. These washes can be used alone for staining techniques or with any glaze from low-fire (cone 05/06), mid-range (cone 5/6) and up to cone 10. They are beautiful in oxidation or reduction and can expand the glaze palette for an artist or teacher. Washes are Not Dinnerware Safe unless used in combination with clear or another glaze that creates a sealed and chemically durable finish.



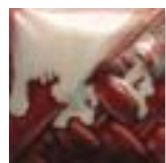
SCAN ME!

For more tips, see our Washes Guide.

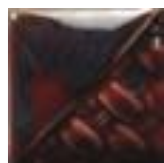


FLUX

Light Flux and Dark Flux are flowing glazes intended for use with other stoneware glazes to enhance movement, promote reactions and add interesting effects. Apply 2-3 coats under or over another mid-range glaze to bring about "hidden colors". Flux can also be used sandwiched in between other glazes.

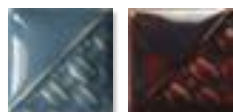


SW401
Light Flux
(over SW119 Cinnabar)

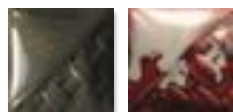


SW402
Dark Flux
(over SW119 Cinnabar)

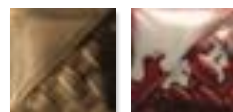
Technique was achieved by brushing on two (2) layers of base glaze. Then apply two (2) layers of top glaze, letting glazes dry between coats.



SW252 Blue Opal over SW402 Dark Flux



SW121 Smoke over SW401 Light Flux



SW173 Amber Quartz over SW401 Light Flux

Dry Glazes

Visit MaycoColors.com for additional resources.

Use Mayco Stoneware Dry glazes (SD#) for fast dipping and layering, creating natural flowing effects. Fine and uniform particle size and a thorough dry mixing process make Mayco Stoneware Dry glaze consistency so perfect that sieving is optional. Available in select 10 lbs. bags. Contact your Mayco Distributor to order.

Your Questions Answered

Not getting desired results? Please contact us for help or check our tutorials on YouTube.

Visit MaycoColors.com/contact to connect with Mayco's technical team.

SCAN ME!

View Mayco's
YouTube channel



GLAZE COMBINATIONS

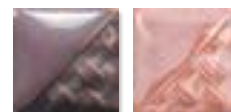
Dramatic and exciting effects with endless glazing possibilities! Artists can achieve incredible finishes with a simple combination of two Stoneware glazes.

SCAN ME!

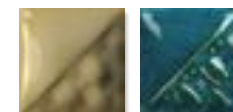
Browse through
1000s of combos!



Technique was achieved by brushing on two (2) layers of base glaze. Then apply two (2) layers of top glaze, letting glazes dry between coats.



SW165 Lavender Mist over SW198 Rose Quartz



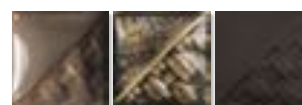
SW169 Frosted Lemon over SW224 Tropical Teal



SW108 Green Tea over SW214 Micro Pearl

GLAZE COMBINATIONS ON ENGObES

Try combos over Mayco Stoneware EngObes for even more potential! EngObes can make all the difference in a striking interaction!



SW110 Oyster over SW218 Micro Ash
on EG004 Dark Brown Engobe



SW100 Blue Surf over SW218 Micro Ash
on EG005 Black Engobe



SW219 Opal Lustre over SW224 Tropical Teal
on EG007 Terracotta Engobe

LOW-FIRE GLAZES AT MID-RANGE AND BEYOND

Artists can incorporate and combine other Mayco products with Stoneware glazes at mid-range (cone 5/6) temperature and beyond. Cone 6 color performance can be found on the left side of the low-fire glaze label. Visit MaycoColors.com for more information on low-fire glazes at mid-range.

Stroke & Coat®

Many Stroke & Coat® glazes perform well at mid-range. Darker colors such as red, orange, yellow, blue and green may darken compared to their cone 06 results. Lighter colors such as tan, purple and pink will fade.



SC104 Grape Expectations, SC028 Blue Isle and SW401 Light Flux applied under SW192 Amaryllis

Elements™

Many Elements™ and Elements™ Chunkies create beautiful effects when used with stoneware at mid-range. Elements™ will be quite fluid and move during the firing process so keep away from the bottom of the ware.



EL149 Lavender Flower over SW110 Oyster and SW134 Eggplant on the rim

Jungle Gems™

Jungle Gems™ glazes perform at mid-range for very interesting results. Crystals will have additional movement at higher temperatures and will act more as a blending agent.



CG1008 Blue Guppy and SW173 Amber Quartz

Designer Liner

Designer Liner enables artists to achieve crisp, non-moving linework from cones 06 - 6 temperatures. To ensure sharpness in line quality, use a non-moving translucent or clear glaze over the top of Designer Liner.



Designer Liner, SW119 Cinnabar and SW001 Clear

Stoneware Glazes at Cone 10 Reduction

Mayco Stoneware glazes are intended for use at cone 5/6, but many are also pleasing and stable at cone 10 oxidation, reduction or other alternative atmospheric firing conditions. Always test prior to use.



CONE 10 REDUCTION RESULTS (1305°C / 2381°F)



SW100
Blue Surf



SW101
Stoned Denim



SW104
Black Walnut



SW105
Frost Blue



SW106
Alabaster



SW107
Dunes



SW108
Green Tea



SW109
Capri Blue



SW110
Oyster



SW111
Wrought Iron



SW112
Tiger's Eye



SW113
Speckled Plum



SW115
Midnight Rain



SW116
Robin's Egg



SW117
Honeycomb



SW118
Sea Salt



SW119
Cinnabar



SW120
Northern Woods



SW121
Smoke



SW122
Maycoshino



SW123
Sapphire



SW127
Olivine



SW128
Cordovan



SW129
Copper Float



SW130
Copper Jade



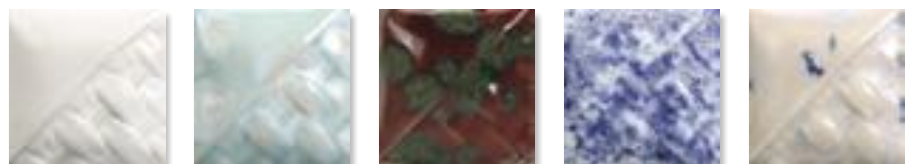
SW131 Birch
SW132 Mirror Black
SW133 Copper Ore
SW134 Eggplant
SW135 Wintergreen



SW136 Weathered Blue
SW137 Storm Gray
SW138 Lemon Meringue
SW140 Black Matte
SW141 White Matte



SW142 Gray Matte
SW143 Abalone
SW146 Aurora Green
SW147 Moonscape
SW148 Lime Shower



SW149 Crackle White
SW150 Celadon Bloom
SW151 Olive Float
SW152 Blue Splatterware
SW153 Indigo Rain



SW154 Shipwreck
SW155 Winter Wood
SW156 Galaxy
SW158 Lilac Matte
SW162 Pink Matte



SW164 Satin Patina
SW165 Lavender Mist
SW166 Norse Blue
SW167 Sand & Sea
SW168 Coral Sands



SW169 Frosted Lemon
SW170 Blue Hydrangea
SW171 Enchanted Forest
SW172 Macadamia
SW173 Amber Quartz



SW174 Leather
SW175 Rusted Iron
SW176 Sandstone
SW177 Raspberry Mist
SW178 Fool's Gold



SW179 Muddy Waters
SW180 Desert Dusk
SW181 Night Moth
SW182 Antique Brass
SW183 Oxblood



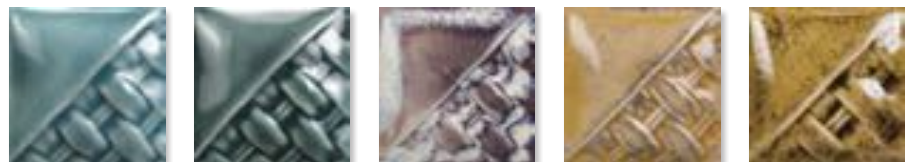
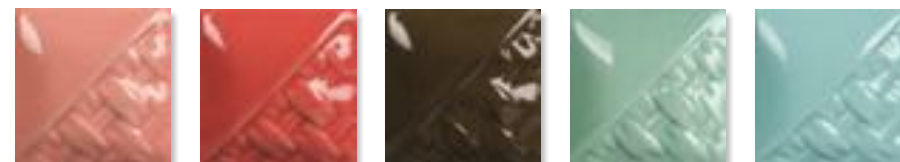
SW184 Speckled Toad
SW185 Rainforest
SW186 Azurite
SW187 Himalayan Salt
SW189 Cenote



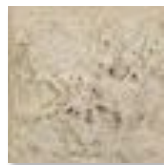
SW190 Passion Flower
SW191 Peppered Plum
SW192 Amaryllis
SW193 Ivy
SW194 Nimbus



SW195 Riptide
SW196 Sand Dollar
SW197 Fossil Rock
SW198 Rose Quartz
SW199 Purple Aster

SW201
TurquoiseSW203
Root BeerSW204
Amber TopazSW205
CoralSW210
EmeraldSW211
Glacier BlueSW212
PeacockSW214
Micro PearlSW215
Micro ChampagneSW216
Micro JadeSW217
Micro CeruleanSW218
Micro AshSW219
Opal LustreSW220
Black TimberSW221
Mint SpeckSW222
Green JasperSW223
Milk GlassSW224
Tropical TealSW250
White OpalSW251
Pink OpalSW252
Blue OpalSW253
Green OpalSW255
Gray Opal**STONEWARE CLEAR**SW001
ClearSW002
Matte ClearSW004
Zinc-Free Clear**STONEWARE GLOSS**SW501
White GlossSW502
Yellow GlossSW503
Orange GlossSW504
Red GlossSW505
Purple GlossSW506
Bright Blue GlossSW507
Bright Green GlossSW508
Black GlossSW509
Dark Green GlossSW510
Blue GlossSW511
Pink GlossSW512
Coral GlossSW513
Brown GlossSW514
Sage GlossSW515
Aqua Gloss**STONEWARE ENGOBE**EG001
White EngobeEG002
Speckled Buff EngobeEG003
Brick Red EngobeEG004
Dark Brown EngobeEG005
Black EngobeEG006
Sparkle Black EngobeEG007
Terracotta Engobe

STONEWARE SPECIALTY

SW003
Crackle Matte ClearSW149
Crackle WhiteSW403
White MudcrackSW404
Black MudcrackSW405
Light MagmaSW406
Dark MagmaSG302
SnowfallSG303
Citrus Snow GemSG304
Berry Snow GemSG305
Spearmint Snow Gem

WASHES

SW301
Iron WashSW303
Manganese WashSW304
Copper WashSW305
Cobalt Wash

FLUX

SW401
Light Flux
(over SW119 Cinnabar)SW402
Dark Flux
(over SW119 Cinnabar)

Movement will be more pronounced at higher temperatures. Take extra care to prevent run-off by tapering your application.

Technique was achieved by brushing on two (2) layers of base glaze. Then apply two (2) layers of top glaze, letting glazes dry between coats:



SW401 Light Flux over SW112 Tiger's Eye



SW167 Sand & Sea over SW402 Dark Flux

GLAZE COMBINATIONS

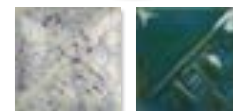
Dramatic and exciting effects with endless glazing possibilities! Artists can achieve incredible finishes with a simple combination of two Stoneware glazes.

SCAN ME!

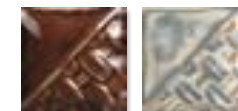


Browse through
1000s of combos!

Technique was achieved by brushing on two (2) layers of base glaze. Then apply two (2) layers of top glaze, letting glazes dry between coats:



SW221 Mint Speck over SW224 Tropical Teal



SW129 Copper Float over SW187 Himalayan Salt



SW219 Opal Lustre over SW224 Tropical Teal



SW146 Aurora Green over SW196 Sand Dollar



SW251 Pink Opal over SW189 Cenote



SW106 Alabaster over SW199 Purple Aster

Get Inspired

Visit MaycoColors.com to access our Project Library.

Explore ideas, draw inspiration, or choose your next project from our extensive project library, such as the popular peacock technique!



Stroke & Coat®

The Creative Choice

An intermixable, versatile glaze
perfect for the classroom or studio.



Jungle Gems™ Crystal Glaze

Featuring crystals that bloom into
unique and beautiful surfaces. Try in
combination with other glazes.



Underglazes

Fundamentals® | Designer Liner | E-Z Stroke®

Vibrant color, highly versatile and
a staple for ceramic artists.



Expand your palette with other products
from Mayco at all firing temperatures
(Cone 06-10 / 999-1305°C / 1830-2381°F).



MC508E 5/25

Mayco Colors
Coloramics, LLC
4077 Weaver Court South
Hilliard, OH 43026

614-675-2020
info@maycocolors.com
MaycoColors.com

