



Celadon



Cone 5/6



Celadon

Tiles are AMACO 11-M A-Mix White Stoneware Clay. Fired to Cone 5.

Category: Mid-High Fire Glaze
Firing Temperature: Cone 5 - Cone 6



**AP glazes safe for Spray Application



C-11
Mixing Clear



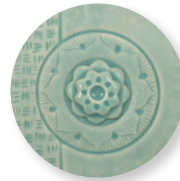
C-10
Snow



C-23
Ice



C-40
Aqua



C-19
Glacier



C-22
Fog



C-24
Succulent



New!

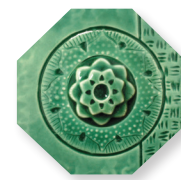
C-42
Saguaro



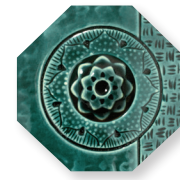
C-41
Pear



C-43
Wasabi



C-47
Jade



C-49
Rainforest



C-27
Storm



C-29
Deep Sea



New!

C-26
Lagoon



C-21
Sky



C-20
Cobalt



C-25
Downpour



C-56
Lavender



C-57
Mulberry



C-50
Cherry Blossom



C-60
Marigold



C-65
Tangelo



New!

C-33
Sandalwood

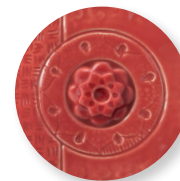


C-55
Poppy



New!

C-52
Red Rock



C-54
Snapdragon



C-53
Weeping Plum



C-32
Ochre



C-3
Smoke



C-36
Iron



C-5
Charcoal



C-1
Obsidian

the CELADON ADVANTAGE

- Great for highlighting texture
- Stiff - won't run when fired
- Bold color at Cone 5/6
- Translucent, glossy finish
- Great for layering with Potter's Choice line
- All colors available in 16oz for brushing
- Six colors available in 1gal for brushing
- All colors available in 10lb dry buckets for dipping

FAQ

Apply to... Cone 04 Bisqueware

Fire to... Cone 5 - Cone 6

Note: Celadons are formulated to be most vibrant at Cone 5. Most celadons are stable up to Cone 10 but do experience color shifts at higher temperatures.

Food safe? Yes. All Celadon glazes hold a food safety status.

MIX IT UP

AMACO Celadons are fully mixable - perfect for creating your own palette. Mix glazes with C-11 Mixing Clear to soften or combine colors to create something entirely new!

Head to www.youtube.com/amacobrent and check out our "Volumetric Mixing" video to see how we mix color!



100% C-27
Storm



75% C-27
25% C-11



50% C-27
50% C-11



25% C-27
75% C-11



10% C-27
90% C-11

Soften

C-27 Storm + C-11 Mixing Clear



100% C-53
Weeping Plum



75% C-53
25% C-60



50% C-53
50% C-60



25% C-53
75% C-60



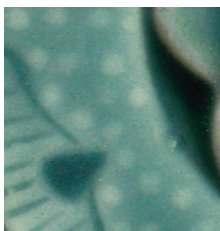
100% C-60
Marigold

Customize

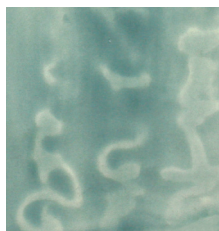
C-53 Weeping Plum +
C-60 Marigold

TEXTURE-TASTIC!

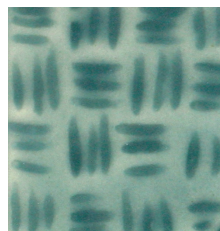
AMACO Celadons pool and break over any kind of texture, creating beautiful depth and variety in your work.



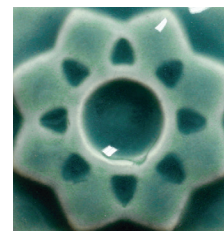
Slip Trailing



Water Etching



Carving



Relief

Head to www.youtube.com/amacobrent and check out our "Carving Clay" video to see the Celadons in action!

LAYERING

Head to www.amaco.com/layering for specs and to check out tons of other layering combinations!

Potter's Choice over Celadons



PC-36 Ironstone
over C-1 Obsidian



PC-59 Deep Firebrick
over C-41 Pear



PCF-18 Honeydew over
C-27 Storm



PC-21 Arctic Blue over
C-53 Weeping Plum

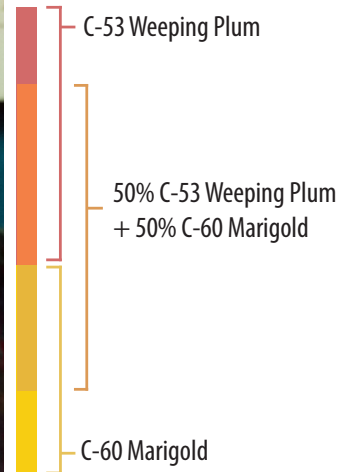
get INSPIRED

Check out these artists using AMACO Celadons.



Pops of Color
Brittany Posten

Over Velvets
Kathy Skaggs



On Speckled Clay
Bethany Sheesley



Marbling
Danielle Khalife

Mixing / Layering
Lorrie Wolaver

want more?



Visit our 5/6 Forum page at
[Facebook.com/groups/potterschoiceex](https://www.facebook.com/groups/potterschoiceex)
to find inspiration, share results, and discuss
with other AMACO customers!

Questions? Call (800) 374-1600