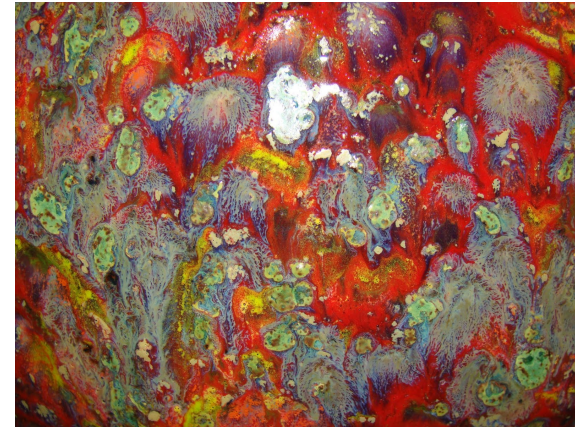
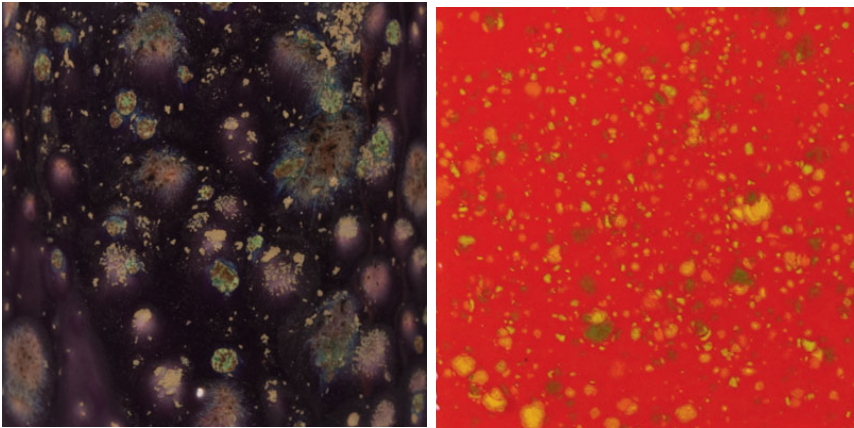


Kristallglasyr från Mayco kombinationer

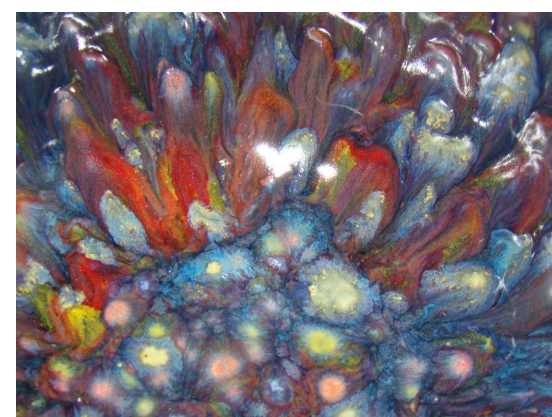
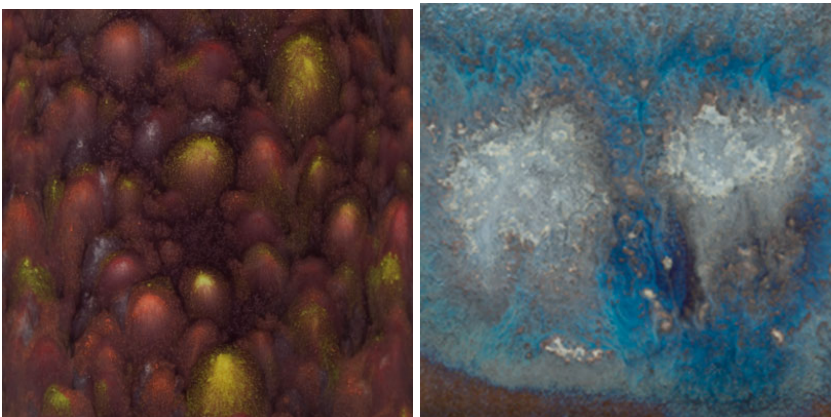
Två lager av den första + ett lager av den andra glasyren

=



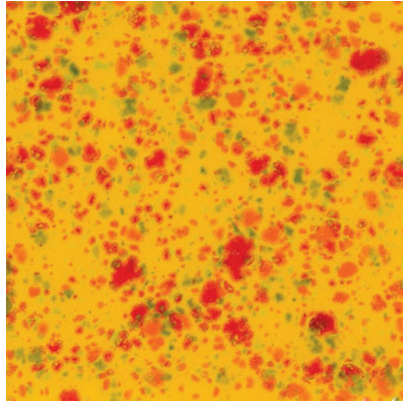
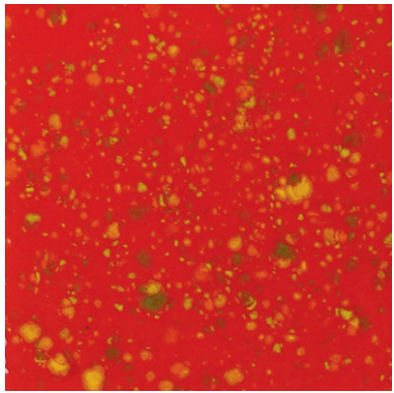
CG-971 Purple Cosmos + CG-756 Firecracker

=



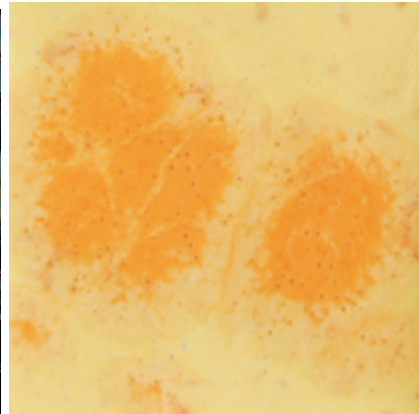
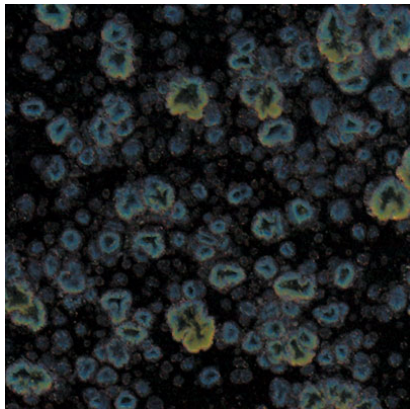
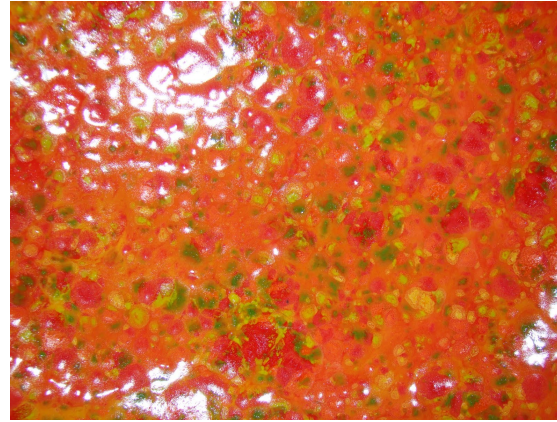
CG-969 Floral Fantasy + EI-209 Night Sky

=



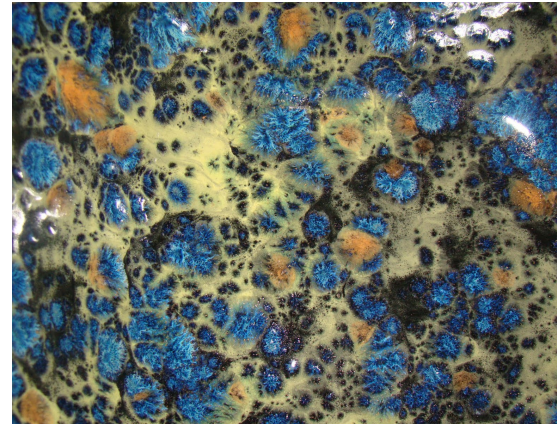
1 coat CG-756 Firecracker + 1 coat CG-753 Sassy Orange

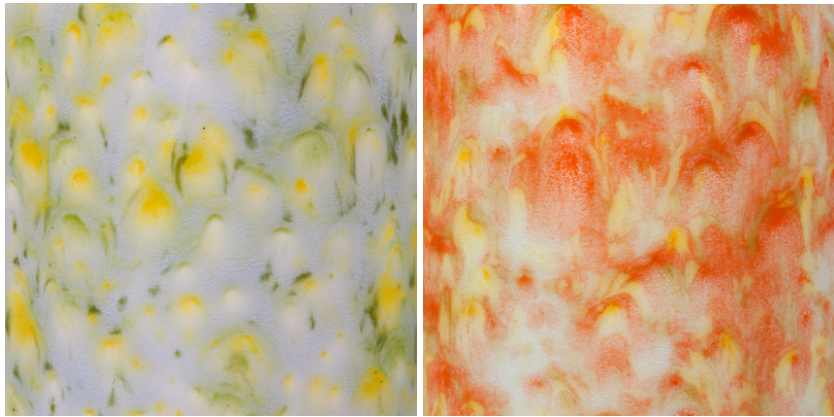
=



CG-786 Obsidian + S-2729 Citrus Splash

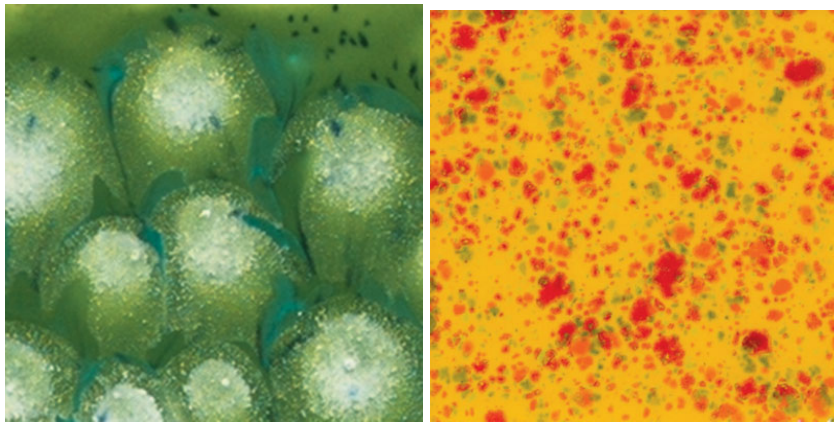
=





2 coats CG-963 Lemon Lime + 2 coats CG-966 Tiger Lily

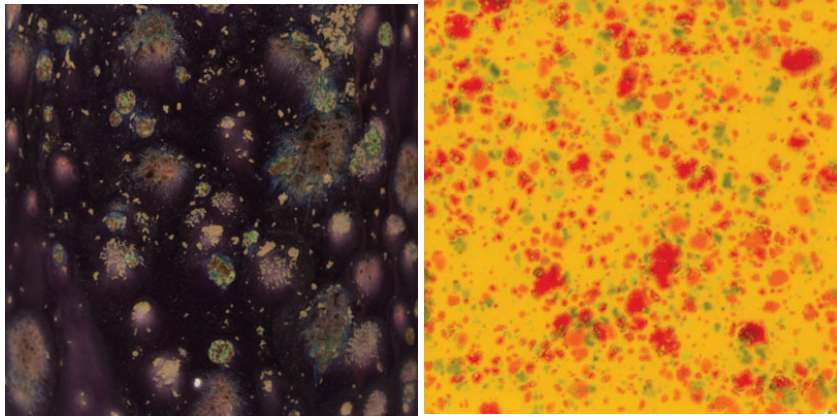
=



S-2715 Spotted Kiwi + CG-753 Sassy Orange

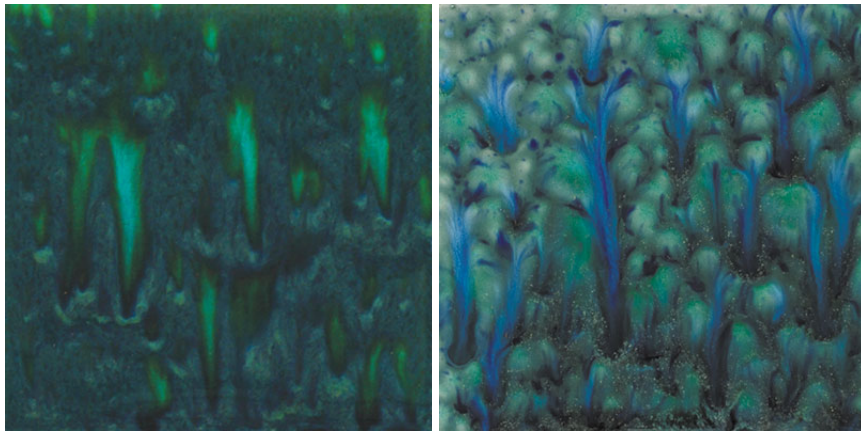
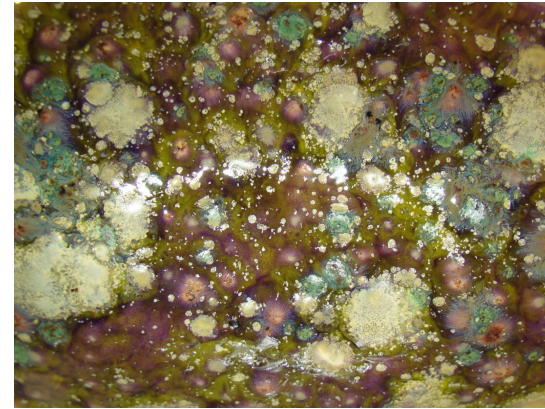
=





CG- 971 Purple Cosmos + CG-753 Sassy Orange

=



CG-713 Peacock Green + CG-962 Blue Azure

=

