

# AMACO LAYERING

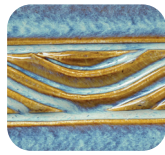
Dipping & Layering / Dipping & Layering



Top Coat



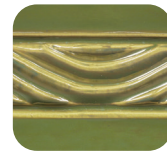
DL-23  
Ultramarine



DL-20  
Floating Blue



DL-70  
Oxblood



DL-42  
River Moss

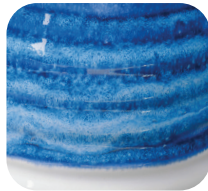


DL-60  
Honeycomb

Base Coat



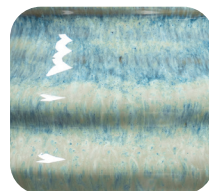
DL-11  
Enamel White



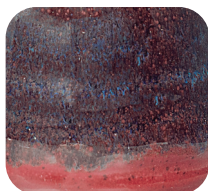
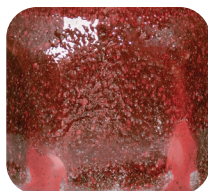
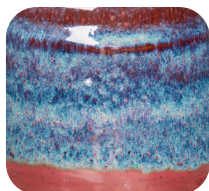
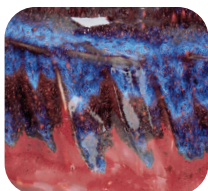
DL-33  
Low Tide



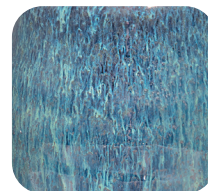
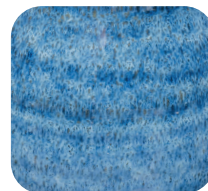
DL-25  
Coastline



DL-59  
Brick Red



DL-12  
Midnight Blue



Layering tiles are 2 second dips over 2 second dips. Fired to Cone 6 on AMACO 11M white stoneware clay.

# AMACO LAYERING

Dipping & Layering / Dipping & Layering



Top Coat



DL-11  
Enamel White



DL-33  
Low Tide



DL-59  
Brick Red



DL-25  
Coastline

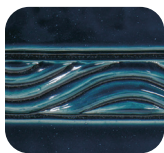


DL-63  
Stardust

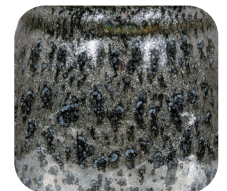
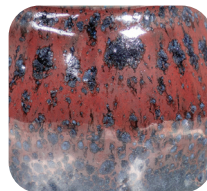
Base Coat



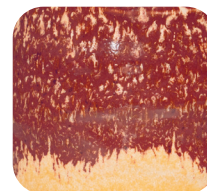
DL-01  
Ebony



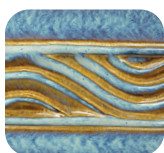
DL-27  
Storm Cloud



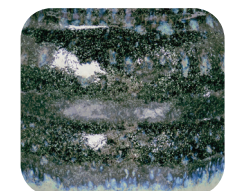
DL-60  
Honeycomb



DL-70  
Oxblood



DL-20  
Floating Blue



Layering tiles are 2 second dips over 2 second dips. Fired to Cone 6 on AMACO 11M white stoneware clay.