

	Model	X108	X136	X163
DISPLAY SPECIFICATIONS	LED Type	Micro LED	Micro LED	Micro LED
	Diagonal Size (inches)	108"	136"	163"
	Screen Dimensions (W x H)(mm)	2400*1350	3000*1687.5	3600*2025
	Screen Dimensions Including Bezel (W x H xD)(mm)	2410*1395*39.3(Non-Touch) 2442*1426*39.3(Touch version)	3010*1732.5*39.3(Non-Touch) 3042*1764*39.3(Touch version)	3610*2070*39.3(Non-Touch) 3642*2101*39.3(Touch version)
	Pixel Pitch(mm)	1.25	1.56	1.87
	Screen Resolution (dots)	1920*1080	1920*1080	1920*1080
	Built-in Speakers	2x15W	2x15W	2x15W
	Brightness (nit)	600	600	600
	Contrast Ratio	15000:1	15000:1	15000:1
	Processing Depth (bit)	14	13	14
	Refresh Rate (Hz)	3840	3840	3840
	Viewing Angle (Horizontal/Vertical) (°)	160/160	160/160	160/160
	TOUCH OPTION	Minimum Identifier (mm)	6	6
Touch Accuracy (mm)		±1	±1	±1
Touch Points		20	20	20
Response Speed (ms)		9	11	13
ELECTRICAL SPECIFICATIONS	AC Power Supply (V)	AC 100-240V	AC 100-240V	AC 100-240V
	Avg./Max. Power Consumption (W)	376/1128	543/1628	671/2005
	Android System	Android 11.0		
SYSTEM SPECIFICATIONS	Processor Core	Main frequency 1.8G 64-bit quad-core processor, Mail G52 GPU		
	System Memory	DDR4-4GB		
	Storage	32GB eMMC5.1		
	Control Interface	RJ45*1, RS232		
	Input/output Interface	HDMI1.3 IN*1, HDMI1.3 OUT*1, USB2.0*4, Audio OUT*1, SPDIF OUT*1		
	Windows System	Optional		
APPLICATION SPECIFICATIONS	Operating Temperature(°C)	-10°C~40°C		
	Operating Humidity(RH)	10~80%RH		
	IP Rating(Front/Rear)	IP40/IP21		
	Service Access	Front		
	Certification	FCC, ETL, CE		

★ Shenzhen Absen Optoelectronic Co., Ltd. reserves the right to modify product design, specifications, and parameters without further notice.
Photos are used for illustration purpose only as products may differ from these photos. All rights reserved by Shenzhen Absen Optoelectronic Co., Ltd.

Absen Optoelectronic Co.,Ltd
18-20F Building 3A, Cloud Park, Bantian,
Longgang District Shenzhen, 518129, P.R.China
T: +86-755-89747399 E: absen@absen.com
F: +86-755-89747599 W: www.absen.com

Absen Inc.
7120 Lake Ellenor Drive, Orlando,
Florida 32809, USA
T: +1-407-203-8870 E: info@usabsen.com
F: +1-407-203-8873 W: www.usabsen.com

Absen GmbH
Hessenring 4c, 64546 Moerfelden-Walldorf (Frankfurt am Main),
Germany
T: +49 (0) 6105 718941-0 E: europe@absen.com
F: +49 (0) 6105 718941-29 W: www.absen-europe.com



Absenicon X Series

The Future Meets Excellence

Redefine Display Standards

Large Format

108" 136" 163" sizes

Immersive view



Improved Clarity

Micro LED technology

Redefine image quality



Easy-to-use

Intelligent functions and systems

Easy to install and maintenance



Comfortable

Stay cool, enjoy more

Softer and uniform light



Rediscover the World Through *Absenicon X*

Born for revolutionary visual experience, features the Micro LED technology, Absenicon X series is an innovative all-in-one direct view LED screen

108"/136"/163"

big screen sizes

600nits

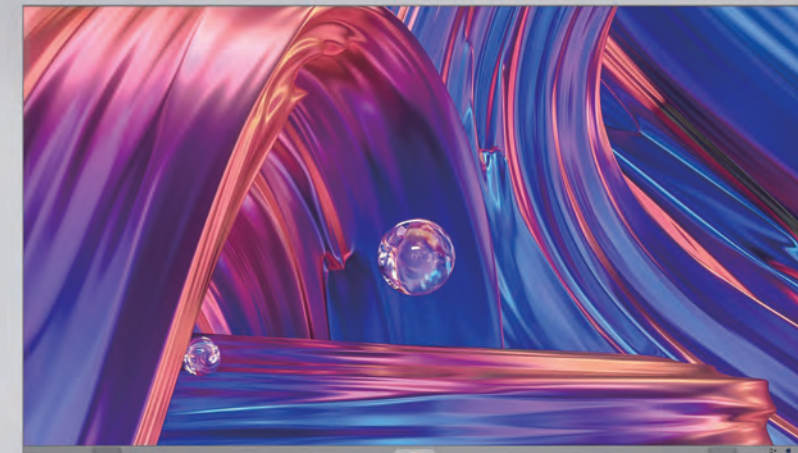
clear imagery under sunlight

160°

ultra-wide viewing angle

Micro LED Technology

approved next-generation technology



Unrivaled Visual Experience

Integrating multiple Absen image optimization technologies, the Absenicon X Series enhances the clarity and visibility to bring out natural details and vivid colors for realistic and incredible images



Full-screen calibration
perfect image consistency



90% BT2020
cinematic color gamut



ΔE≤0.9
color precision



15000:1
high contrast ratio



The Purest Deep Black

The surface is covered with a black coating of polymer material, which brings amazing black consistency, bringing a deep and pure black, which improves the visual performance to an unprecedented level



intense black immersion



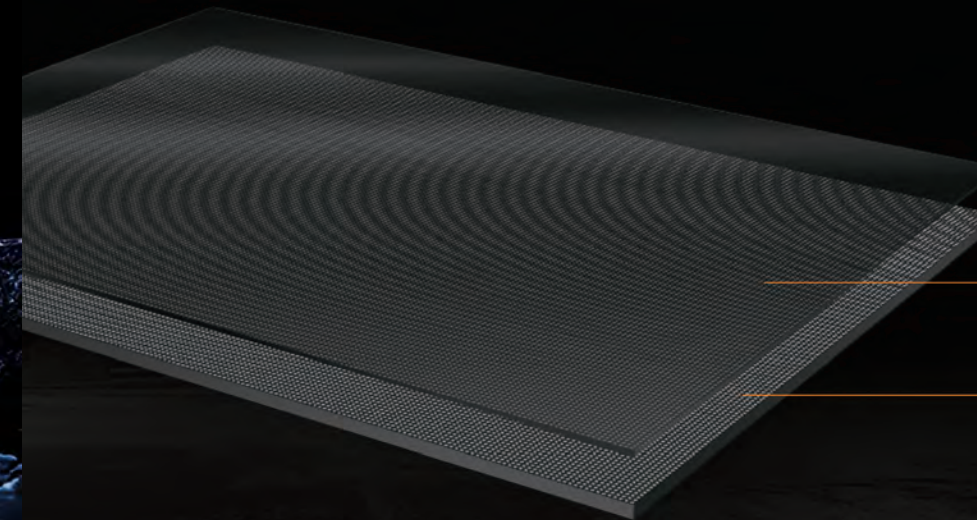
high flatness



exceptional black consistency



no glare and reflection



Avoid reflection and modularization

Black coating technology

Micro LED technology

Creating a Comfortable Experience



Eye-caring

The non-glare surface light source brings softer and uniform light, relieving the eye fatigue experience when watching the screen for a long time



Stay cool, enjoy more

Thanks to the Micro LED technology and Absen's HBB common cathode technology, the screen can always stay cool, diving into the fantastic visual world without breaking a sweat



Mute operation

Operating noise is reduced to 25dB to ensure a comfortable experience

All-in-one Design with Delicate Details

The Absenicon X Series comes as a complete kit ready to install, including controller, audio, PSU and all necessary display elements needed for the installation. There's no need for complex wiring and debugging, it's easy to install and use. The design of lift type control box satisfies the 97% above high screen ratio and the convenience of installation and maintenance



Signal antenna preposition



Lift type control box



2*15w Built-in Speakers

Step Into the Future Where Accuracy Meets Interactivity

Equipped with a high-precision infrared touch system, the Absenicon X Series revolutionizes interactivity and elevating user engagement. With 1mm touch accuracy and support for 20-point multi-touch and smart gestures, it delivers seamless and intuitive interactions

±1mm

Touch accuracy

20point

Multi-touch



Smart gestures



Scan to share



-  Single touch
-  Two point scaling
-  Multipoint movement
-  Hand erase
-  Set background
-  Select handwriting color and thickness

* The touchscreen functionality cannot be enabled when an external device is connected via HDMI.

Remote Control for Easy Operation

Remote control for on/off switches, brightness adjustment, content switching, settings, etc. An infrared & Bluetooth remote control that covers a transmission distance of 10m



Compatible with AV Control Systems

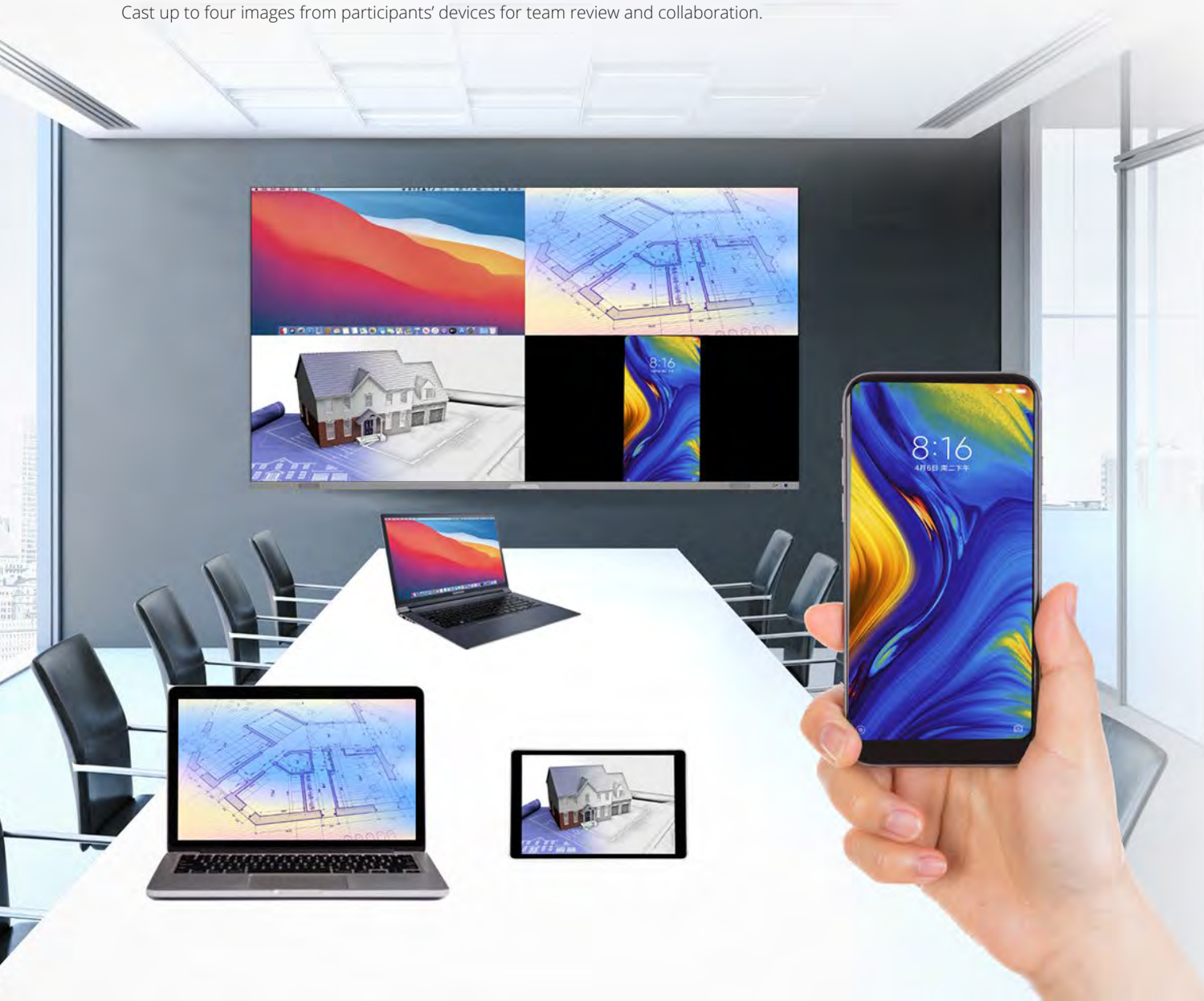
Ethernet control protocols are provided for control systems such as Crestron and Extron making for easy integration which saves the system integrator both time and money with onsite programming.



Intelligent Wireless Screen-mirroring

Wireless screen mirroring from phones, computers and other devices

Cast up to four images from participants' devices for team review and collaboration.



Intelligent System with Upgraded Performance

The Absenicon X Series comes with a standard Android 11.0 operating system. A Windows operating system is available through an additional OPS computer. An Ultra-large memory and a powerful 4-core processor are included for a smooth and fast performance for wireless screen mirroring from phones, computers, and other devices



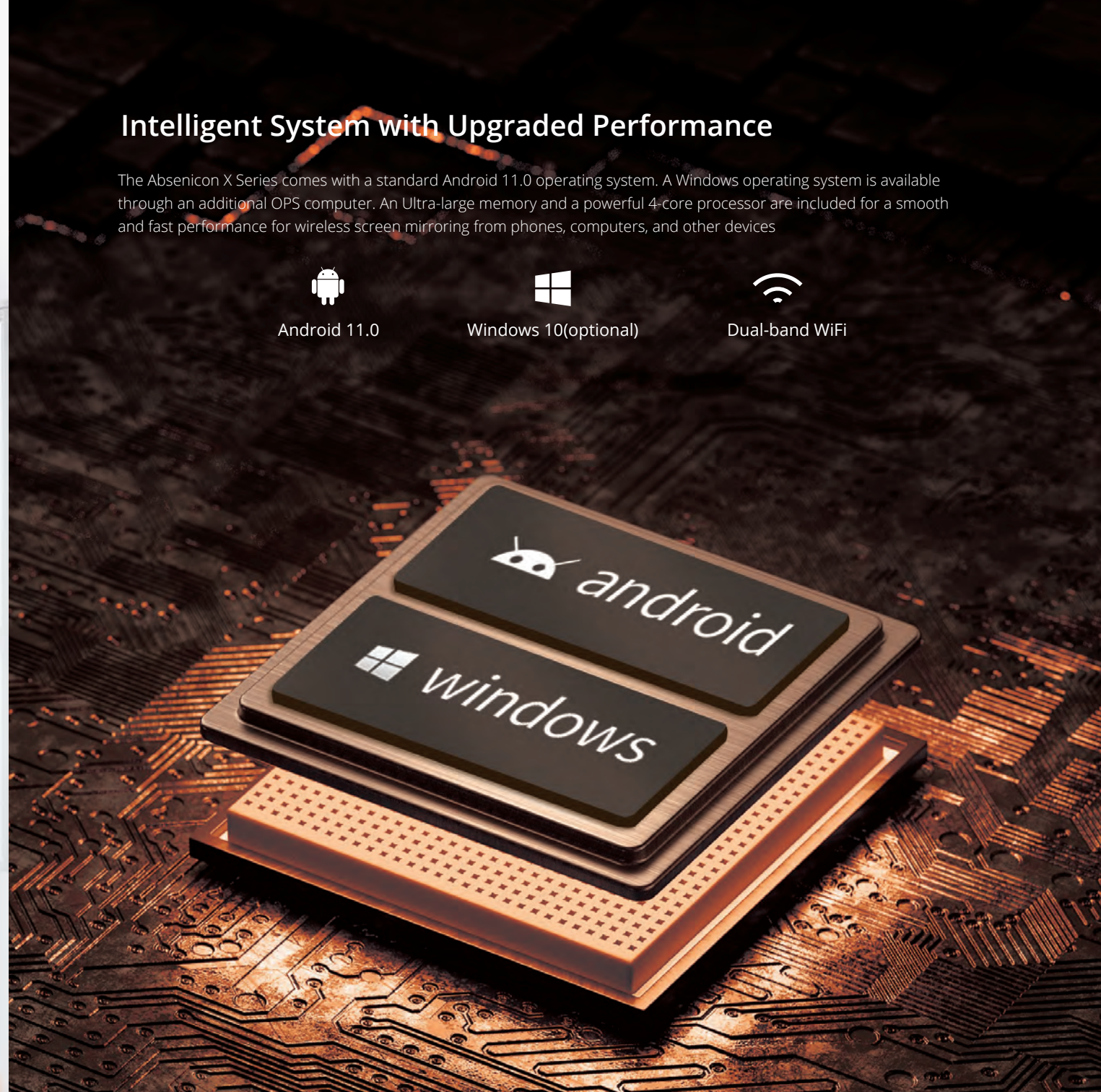
Android 11.0



Windows 10(optional)



Dual-band WiFi



Remote Video Conferencing

Compatible with popular video conferencing apps, experience smooth and efficient video conferencing



Durability in Demanding Spaces

The panel-type encapsulation technology effectively protects the display from external impact. The ultra-long service life of 100,000 hours providing a lower cost of ownership and reduced carbon foot print.



Anti-touch marks



Water-resistant



Dust-resistant



Anti-collision



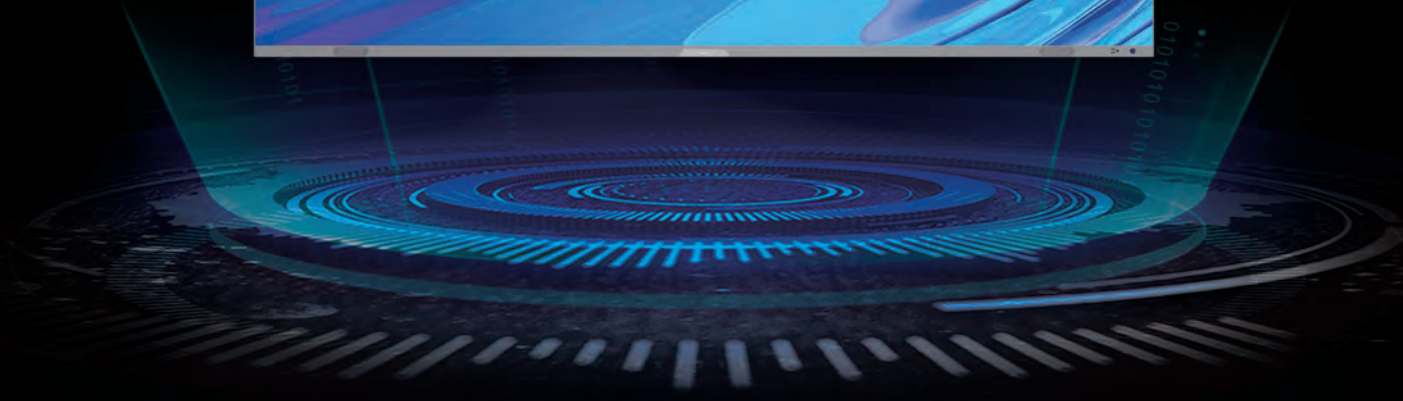
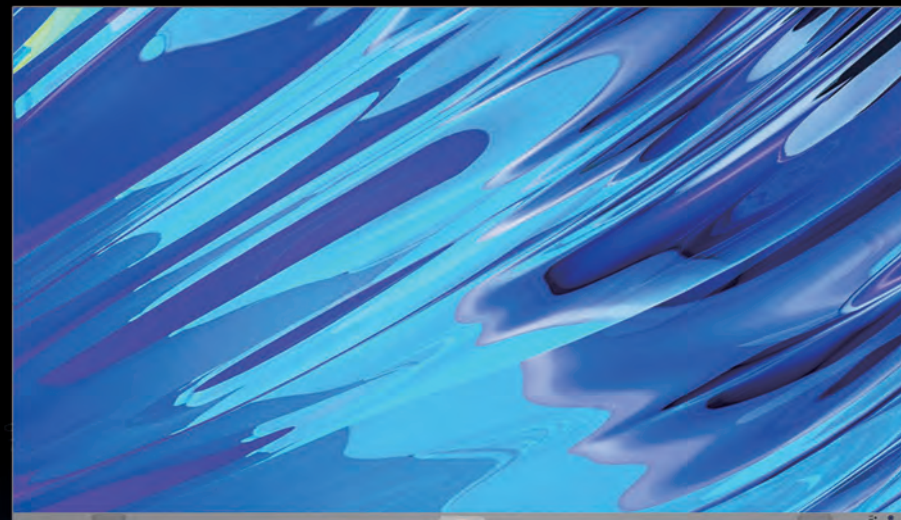
Anti-blue light



Anti-static



Anti-oxidation



Delicate Design, Less Consumption

40% energy saving is achieved by a combination of technological innovations, and adopted recyclable carton packaging design, practicing the "Absen Green" concept

Dynamic Energy Management

dynamically adjust the output current



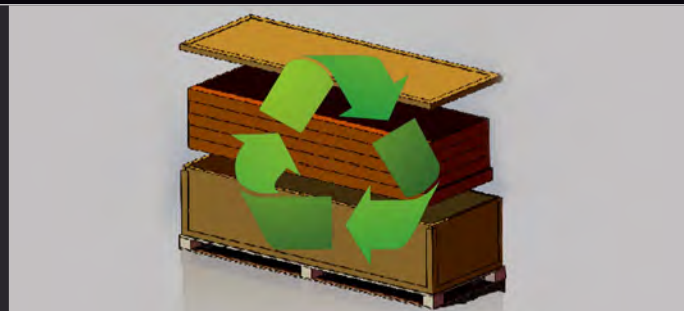
Black Screen Technology

Low-power mode saving $\geq 80\%$



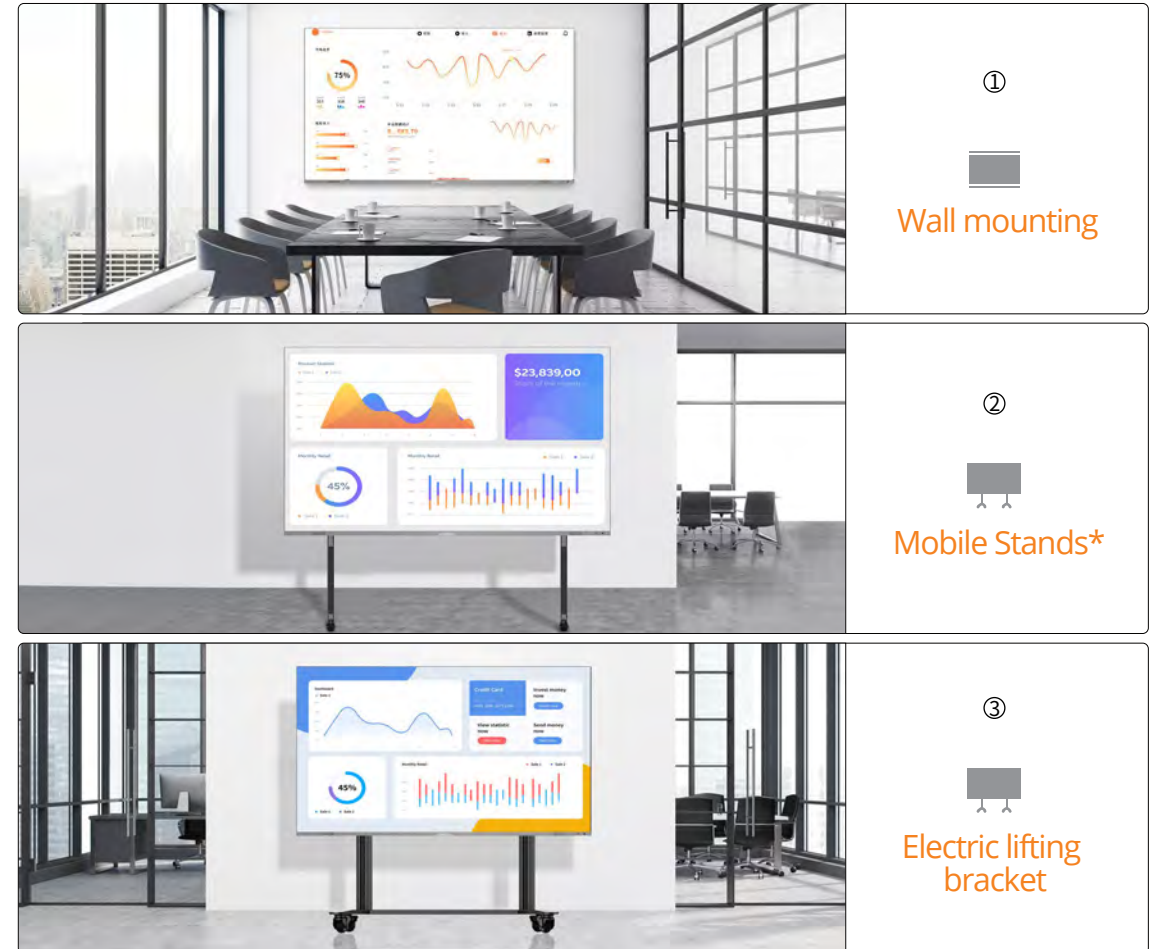
Eco-friendly Packaging

recyclable carton design



Modular Design, Flexible Installation

The modular design enables it to be easily transported to offices and in elevators. The Absenicon X Series can be mounted on a wall or on a mobile stand, or on the innovative electric lifting bracket for height adjustment. The endless installation possibilities fit your needs in any environment



*X163 does not support mobile stands installation

Easy to Clean & Maintain

The screen allows repair in modules without the need to reserve extra space. The protection level of the front panel reaches IPX4. A wet towel can be used for usual cleaning, making screen maintenance easier and cheaper.



All in One, One For All



Meeting Rooms & Boardrooms



Lecture Theaters



Auditorium



Lobbies



Clubs/Pubs



Exhibitions

Professional service, best experience

Absen has established a worldwide network, enabling the delivery of timely and expert local services.

Absen Service Ability



Comprehensive Support

Experience a 2-year warranty, an optional extended 1 - 3-year warranty, lifetime maintenance, and access to 10+ professional service solutions designed to help you solve any challenges.



Global Coverage

Benefit from a network of 500+ Absen Certified Partners and 3,000+ Engineers, with a global reach covering most markets. Our service network is continuously expanding.



Multiple Service Channels

Providing service via multiple channels such as Hot line, WeChat, WhatsApp, E-mail and official website to quickly take care of service requirements



24 / 7 Response

We are available 24/7/365 with a quick response time in as little as 10 seconds.



One-stop Service

Experience exclusive and expert support throughout the entire sales process, from pre-sales to post-sales.

Absen Service Philosophy

Initiative

Proactive care and return visits, regular touring inspection services for customers

Efficiency

All service channels respond within 10 seconds, intelligently match the best local service resources, and enjoy a fast service experience

Standardization

Comprehensive service engineer training system, ACE professional training and certification, ACP professional certification; establishing customer's product files and record the entire service process

Thoughtfulness

Extended warranty for peace of mind and uncompromising quality assurance



Service Channels

Hot line: +86 400-700-3278
WeChat: 13923413428
WhatsApp: 008613923413428
E-mail: service@absen.com
Official website: www.absen.com



Service Time(GMT+8)

7X24 hours online service