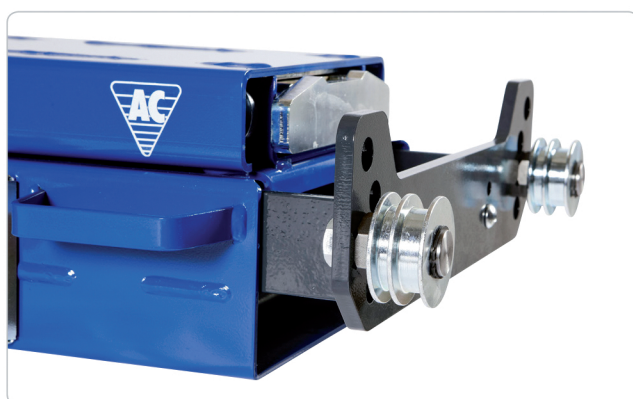




AC Hydraulic^{A/S}

NO COMPROMISE



SD32PHL

SD40PHL

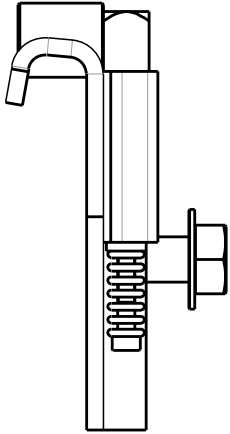
DK Ophængsliste for saksedonkraft

Lift	Model, type, (evt. årgang og andre bemærkninger)	Varenr.
Lift	Model, Type, (Year and other comments)	Item No.
Hebebühne	Modell, Typ, (Baujahr und weitere Hinweise)	Artikel Nr.
Pont	Modèle, Marque (année et d'autres remarques)	Référence
ATT	HYMAX X6000	63 269 00
Cascos	C470/460	63 262 00
Nussbaum	Unilift 6000, 4,8H	63 269 00
	Unilift 8000	63 268 00
	Unilift 5000 NT/CLT fra/von/from/de 04/2013	63 283 00
	4.65 (m. lys, with lifth, mit Licht, avec éclairage)	63 353 50
Ravaglioli	4650 / 4800 (m kant, with edge, mit Kante, avec rail)	63 263 00
Rotary	RJ-40X	63 281 00
Stenhøj	Maxi 80	63 265 00
	Biglift 550 (alternativ : 63 264 75)	63 262 00
	Major 7230-60S	63 264 25
	Major 7230 lifte fra 2012 u. kant. KUN anvendelig på lifte uden lys eller med LED lys monteret. For lifts from 2012 without rail. Only for lifts without light or w/LED. . Für Bühnen von 2012 ohne Kante. Nur für Bühnen ohne Licht oder mit LED. Pour ponts à partir de 2012 sans rail. Seulement pour ponts sans éclairage ou avec LED.	63 282 00
Stertil-Koni	ST4100	63 262 00
	ST4070, ST4400, ST4055	63 353 00
	ST4120	63 265 00
	Sikkerhedskit til, safety kit, for, Aushubsicherung für, jeu de sécurité pour : 63 265 00	63 352 14
Werther	480	63 265 50

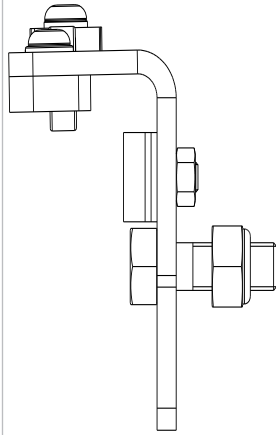


Denne liste er baseret på enkelte eksemplarer af de pågældende lifte. AC tager forbehold for eventuelle ændringer i liftproducenternes produkter. Erfaringer med kombineret af lifte og ophæng modtages gerne.

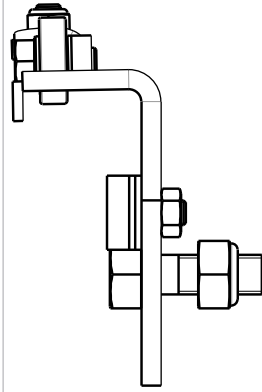
63 262 00



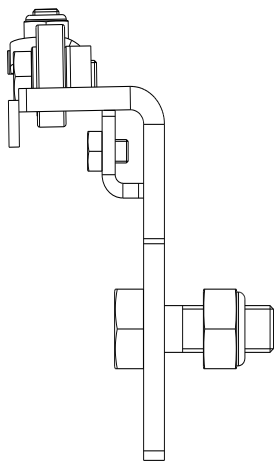
63 263 00



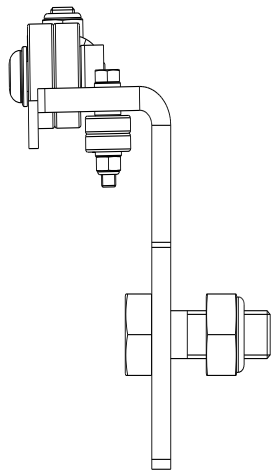
63 264 00



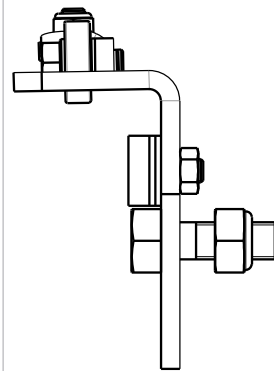
63 264 25



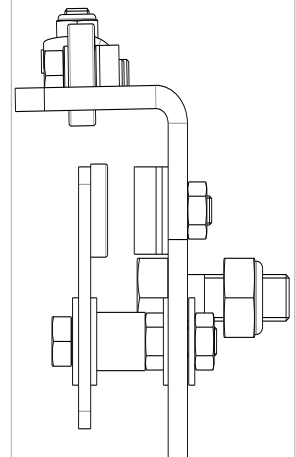
63 264 75



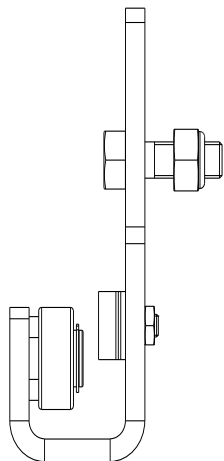
63 265 00



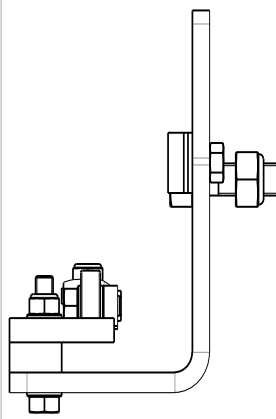
63 265 50



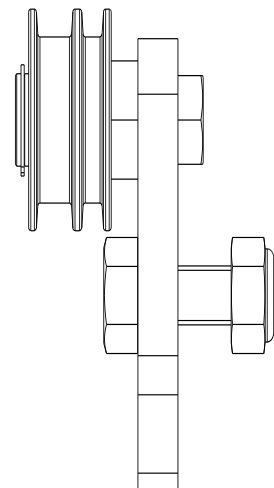
63 268 00



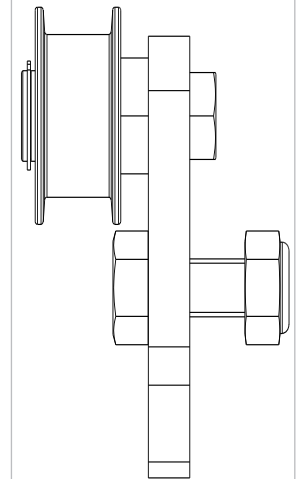
63 269 00



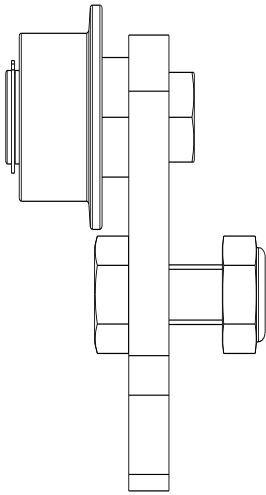
63 270 00



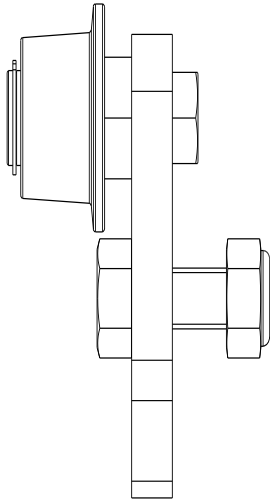
63 272 00



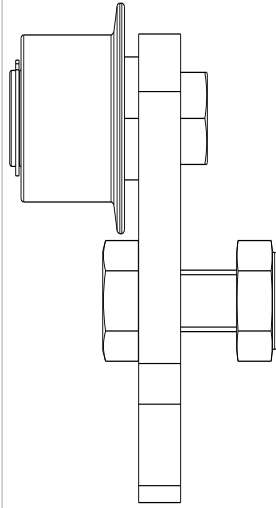
63 273 00



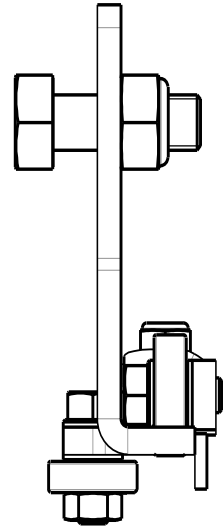
63 274 00



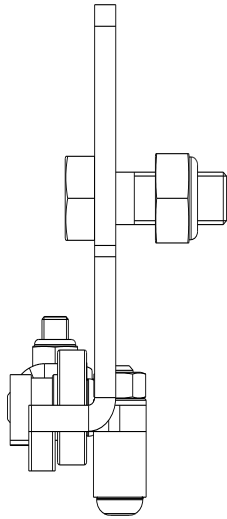
63 275 00



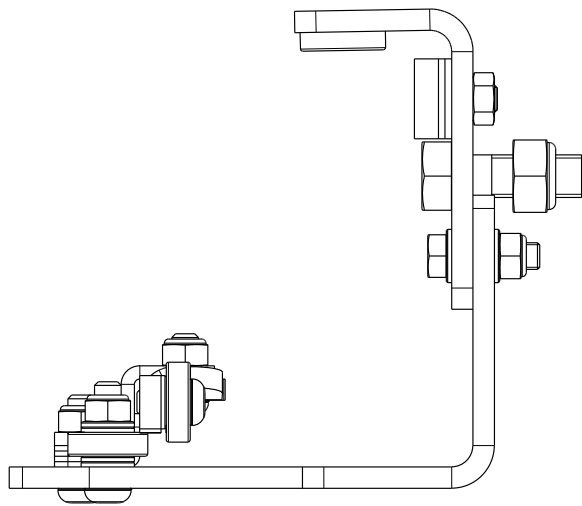
63 280 00



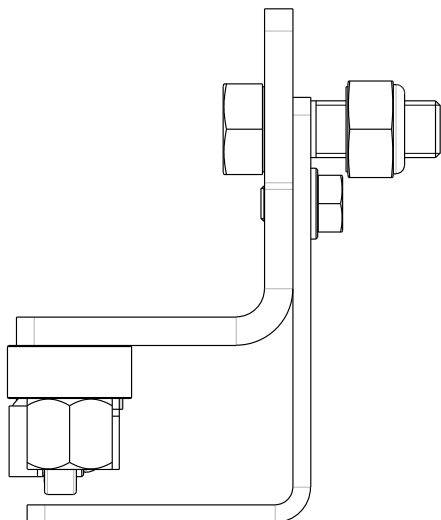
63 281 00



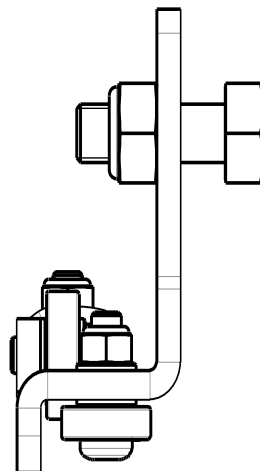
63 282 00



63 283 00

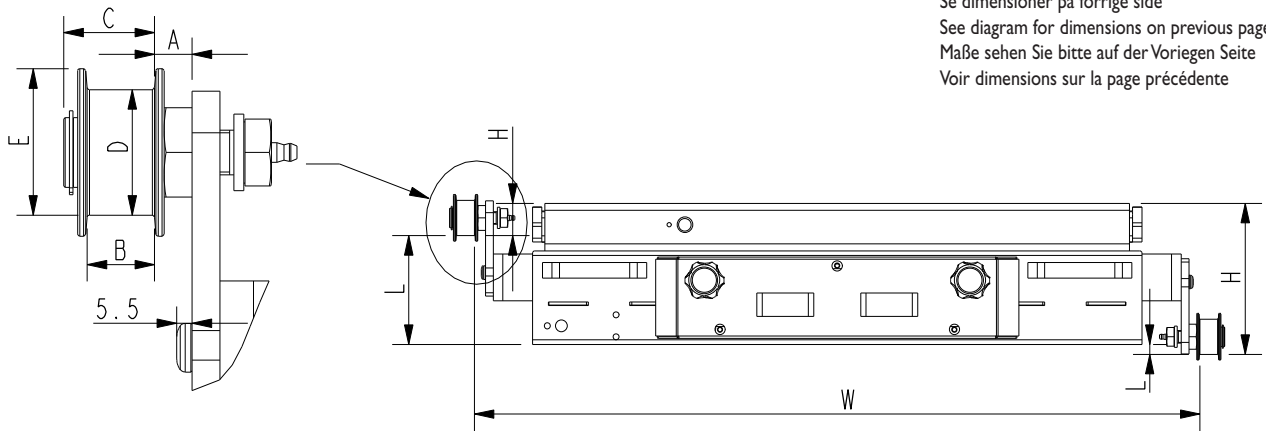


63 353 00



Varenr. Article no. Artikel Nr. Référence	A	B	C	D	E	L		H		W							
						min.	max.	min.	max.	min.	max.						
						63 262 00	-	20	(29)	∅26	-	164	128	7	71	822	1262
						63 263 00	-	-	(48)	∅35	-	144	208	27	91	824	1264
63 264 00	-	-	(46,5)	∅35	-	166	230	3	67	824	1264						
63 264 25		-	30,5	∅35	35	165,5	229,5	3,5	67,5	839	1279						
63 264 75	27,5-44	3-20	15-32	∅35	35	166	230	3	67	852	1292-1326						
63 265 00	-	-	(49)	∅35	-	157	221	14	78	824	1264						
63 265 50	-	-	(49)	∅35	-	157	221	14	78	824	1264						
63 268 00	-	-	-	∅45	-	19	45	189	253	828	1268						
63 269 00		-	-	∅35	-	-14	50	185	249	828	1268						
63 270 00	14,5	7/12,5	33,5	∅45	52,5	22	181	54	213	840	1280						
63 272 00	14,5	24	33,5	∅45	52,5	22	181	54	213	840	1280						
63 273 00	16	26	32	∅45	52,5	22	181	54	213	840	1280						
63 274 00	16	26	32	∅45	52,5	22	181	54	213	840	1280						
63 275 00	10	33	38,5	∅43,5	52	23	182	53	212	830	1270						
63 280 00	5,5-18	7-19,5	23,5-16	∅35	35	20	84	149	213	807	1247-1272						
63 281 00	13-0,5	2-14,5	32,5-20	∅35	35	21	85	150	214	797	1237						
63 282 00	-	-	(45)	-	(15)	164	178	57	71	840	1264						
63 283 00	37,5	-	(35)	∅30	(41)	21	60	175	214	871	1311						
63 353 00	37-27	2-12	32-22	∅35	35	44	108	127	191	850	1290						

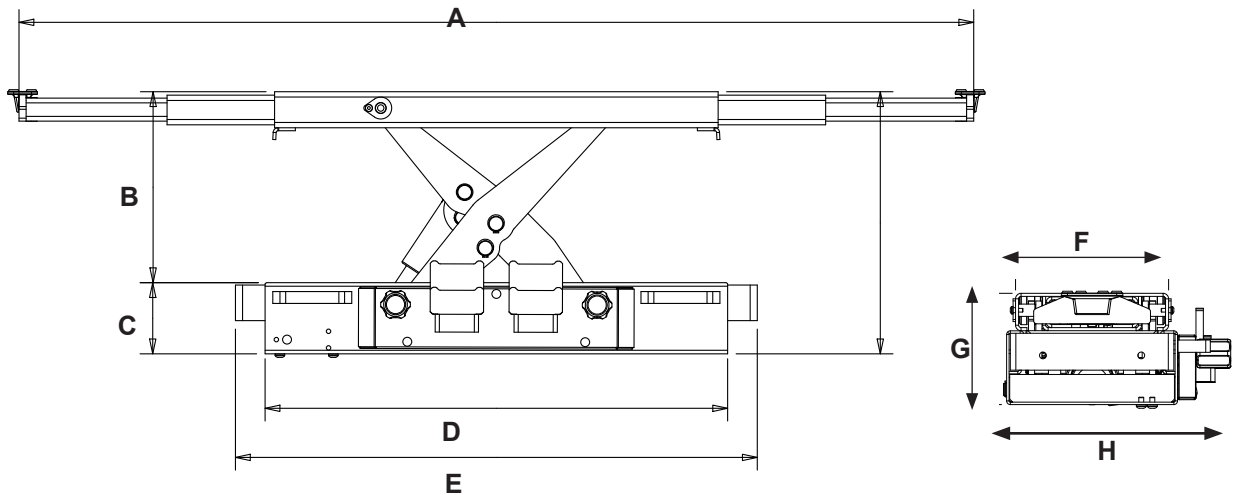
Ophæng for saksedonkrafte
Support arms for jacking beams
Aufhängungen für Scherenheber
Jeux d'accroches pour traverses de levage



Se dimensioner på forrige side
 See diagram for dimensions on previous page
 Maße sehen Sie bitte auf der Vorliegen Seite
 Voir dimensions sur la page précédente

<p>A Teleskopudtræk/Løftearme mm Telescopic arms mm. Teleskopauszug/Hubarme mm Bras télescopique mm</p> <p>B Slaglængde mm Stroke mm Kolbenhub mm Course mm</p>	<p>C Rammehøjde mm Frameheight mm Chassishöhe mmm Hauteur de cadre mm</p> <p>D Rammebredde mm Framewidth mm Rahmenbreite mm Longueur de cadre mm</p>	<p>E Bredde incl. udtræk mm Frame width mm Auszug Aufhängung mm Longeur de bras rallonge mm</p> <p>F Løfteramme bredde mm Lifting frame width mm Hubrahmen Breite mm Largeur de cadre de levage mm</p>	<p>G Min. højde mm Min. height mm Min. Höhe mm Hauteur mini mm</p> <p>H Total bredde mm Total width mm Gesamtbreite mm Largeur totale mm</p>
-------------------------------------------------------------------------------------------------------------------------------------------------------------------------------------------------------------------------------------------------------------	--------------------------------------------------------------------------------------------------------------------------------------------------------------------------------------------------------------------------------------------------	----------------------------------------------------------------------------------------------------------------------------------------------------------------------------------------------------------------------------------------------------------------------------------------------------	------------------------------------------------------------------------------------------------------------------------------------------------------------------------------------------------------------------------------------------

SD40PHL



Model	A	B	C	D	E	F	G	H
SD40PHL	780-1500	70-320	160	780	780-1220	343	230	475