

AST5114

Trailing Arm Bush Removal / Installation Kit – ON CAR



Auto Service Tools Ltd

AST5114 Trailing Arm Bush Removal / Installation Kit – ON CAR

Applications:

Rear Suspension - Trailing Arm Bush on

FORD:

Galaxy (06-14) Mondeo (07-14) S-Max (06-14)

VOLVO:

S60 II (10-14) V70 III (07-14)

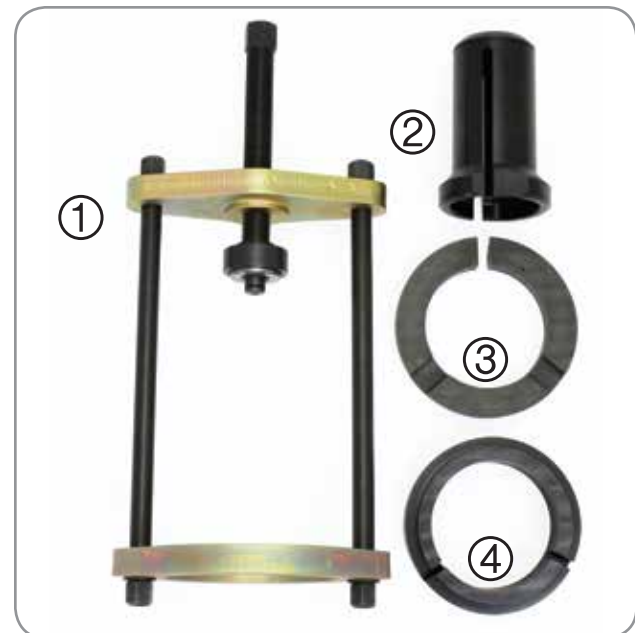
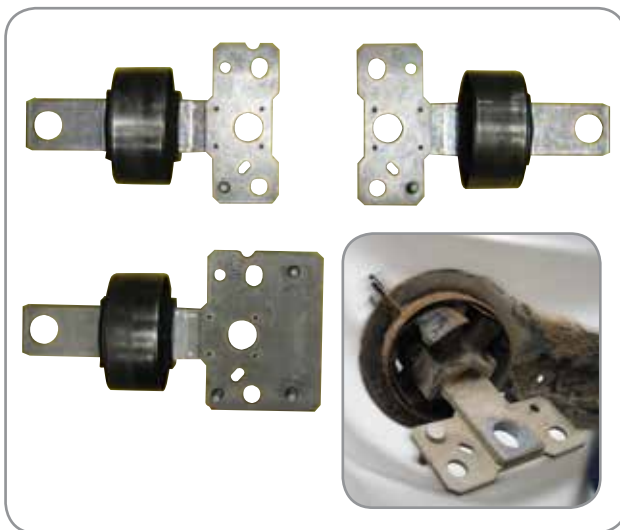
V60 (10-14) XC70 / V70XC (07-14)

XC60 (10-14)



AST5114

Kit Contents / Spares:



AST5114 Trailing Arm Bush Remover/Installer Kit is designed for **ON CAR** applications. This minimises the amount of disassembly required, significantly reducing the length of time taken to replace the bushes.

The trailing arm bushes suffer delamination of the rubber/metal bonding, causing the rubber core of the bush to become detached from the outer sleeve.

In order to remove and install the trailing arm bushes successfully, the tool, bush and arm must be correctly aligned. The design of **AST5114 Trailing Arm Bush Remover/Installer Kit** incorporates the required angular setup, allowing quick and simple replacement of the bushes.

Some Volvo applications use a different bush with a longer head, **AST5114 Trailing Arm Bush Remover/Installer Kit** accommodates both long and short bushes.

Item	Part Number	Description
1	AST5114-1	Frame Assembly (comprises items 5-11)
2	AST5114-2	Thrust Tube
3	AST5114-3	Bush Removal Adaptor Plate
4	AST5114-4	Bush Installation Adaptor Plate
5	AST5114-5	Top Plate
6	AST5114-6	Side Rods (PAIR c/w 4x Nuts & Washers)
7	AST5114-7	Bottom Plate
8	AST4725-7	Force Screw
9	AST4321-7	Bearing Housing
10	AST4321-9	Bearing
11	AST4321-10	Circlip

IMPORTANT: Always refer to the vehicle manufacturer's service instructions, or proprietary manual, to establish the current procedures and data. Product Information Sets detail applications and use of the tools with any general instructions provided as a guide only.

AST has a policy of continuous development & reserve the right to change product specification or appearance without prior notice.

Trailing Arm Bush replacement Removal

**ALWAYS KEEP FORCE
SCREW WELL LUBRICATED**



DO NOT USE AIR TOOLS



IMPORTANT: Safety goggles, footwear and gloves should be worn when carrying out this procedure.

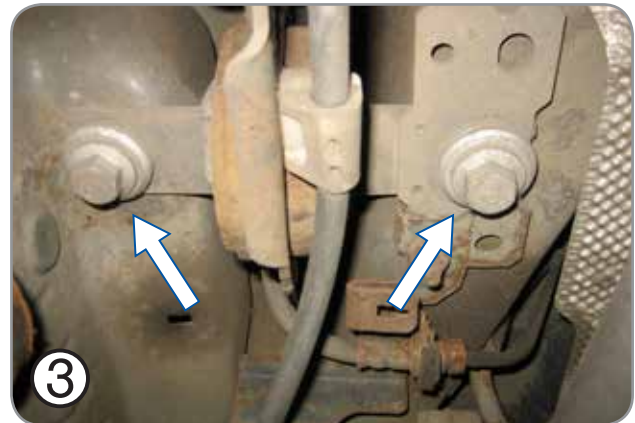
Safely and securely raise and support the vehicle, giving access to the underside of the vehicle.



Remove the bottom bolt of the shock absorber and the support link bar bolt from the trailing arm.



Unclip the cables and the electrical wiring from the trailing arm, detach the bracket that is bolted to the trailing arm bush.

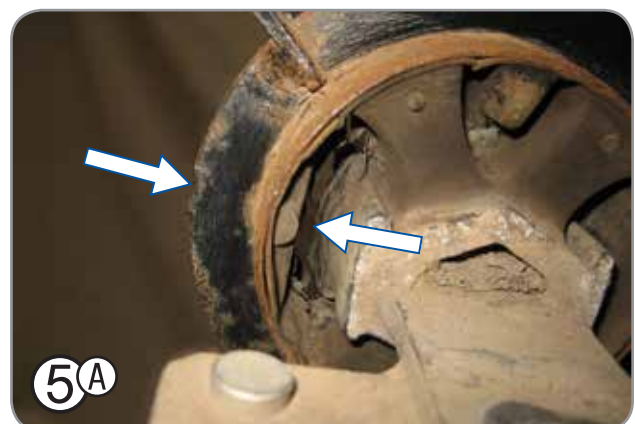


Remove the 2 bolts that secure the front end of the trailing arm to the underside of the vehicle.



Pull the front of the trailing arm down, away from the underside of the vehicle, giving access to the bush.

Using a suitable method such as a wire brush, remove any loose pieces of corroded metal from the outer sleeve of the bush.



AST5114

Trailing Arm Bush Removal / Installation Kit – ON CAR



Auto Service Tools Ltd



Before removing the trailing arm bush, take note of the position of the bush, including the distance that the outer sleeve of the bush protrudes from the outside of the trailing arm.

NOTE: During installation, the replacement bush will be aligned using a rubber moulded lug that corresponds to a cut out in the end of the trailing arm. If the cut out or moulded lug are not present, the arm can be paint marked prior to removing the old bush to ensure correct bush alignment is maintained.



Fit **AST5114-3 Removal Adaptor Plate** over the 'T' shaped end of the bush and position it flat against the arm so that the cable stay bracket is positioned in the recess of the adaptor plate.



Fit **AST5114-1 Frame assembly** over the bush and trailing arm, then position it so that the lug of the frame bottom plate is located in the slot of **AST5114-3 removal adaptor plate**. Fit **AST5114-2 Thrust Tube** over the trailing arm bush and tighten the force screw **hand tight only** at this stage, so that the frame is retained in position, but not forcing the bush from the arm.



Before pressing the bush from the arm, check that the tool is correctly aligned. Misalignment of the tool may lead to the bush being pressed out at an angle, causing damage to the tool and the trailing arm.



When the bush and bush tool are correctly aligned, use a 24mm spanner to tighten the Force Screw of the Bush Tool, slowly and smoothly pressing the bush out of the trailing arm.

AST5114

Trailing Arm Bush Removal / Installation Kit – ON CAR



Auto Service Tools Ltd

**ALWAYS KEEP FORCE
SCREW WELL LUBRICATED**



DO NOT USE AIR TOOLS



Installation

Ensure that the aperture of the trailing arm is clean and free from dirt/corrosion.



Assemble **AST5114-4 Bush Installation Adaptor Plate** into **AST5114-1 Frame Assembly**, ensuring that the lug on the bottom plate of the frame assembly is fully located in the groove of the adaptor plate.



Fit the assembled **Frame and Adaptor Plate** over the trailing arm, locating the cable stay bracket into the slot of the installation adaptor plate. This will position the frame at the correct angle for installation of the bush.



Position the replacement bush in the slot of **AST5114-2 Thrust Tube**, locating the outer sleeve of the bush onto the end face of the Thrust Tube.



Position **AST5114-2 Thrust Tube** and the replacement bush in the Frame. Then tighten the force screw **hand tight only** at this stage, so that the frame and bush are retained in position, but the bush is not forced into the arm.



Check that the **Bush, Trailing Arm and Frame assembly** are correctly aligned. The rubber lug moulded into the bush should align with the cut out at the end of the trailing arm (or paint marks if used). The **Force Screw, Thrust Tube and Central bar** of the bush must all be aligned to ensure that the bush is pressed into the trailing arm correctly.

AST5114

Trailing Arm Bush Removal / Installation Kit – ON CAR



Auto Service Tools Ltd



**ALWAYS KEEP FORCE
SCREW WELL LUBRICATED**



DO NOT USE AIR TOOLS



When the bush and bush tool are correctly aligned to the trailing arm, use a 24mm spanner to tighten the Force Screw of the Bush Tool, slowly and smoothly pressing the bush into the trailing arm. Continue until the outer sleeve of the bush is positioned correctly within the arm. Monitor the movement of the bush, ensuring that it remains square as it enters the trailing arm.

Remove **AST5114 bush tool** from the trailing arm.
Lift the trailing arm and refit the 2 bolts that secure the front end of the arm to the underside of the vehicle.
Refit the bracket that is bolted to the trailing arm bush.
Reassemble the trailing arm, including the shock absorber, drop link and cabling.