

Engine Stand | 800 Kg



SPECIFICATIONS

- Two swivel and two fixed castors
- Turntable 360° rotatable via 90° offset crank wheel
- Four mounting arms with elongated holes for optimal motor alignment
- Large drip tray prevents soiling of the floor when dismantling the oil pan, cylinder head, etc.

Max. Capacity: 800 Kg

Height: 1100 mm

Width: 940 mm

Depth: 1300 mm

INTENDED USE

This product is a device used to mount an automotive type of engine when removed from a vehicle. This device is designed to provide access to the engine for servicing and/or rebuilding. The stand incorporates a locking, rotating mounting plate so that the user can turn the engine for ease access. The stand also incorporates wheels and casters to allow mobility across a smooth and flat surface.

ATTENTION

Read the operating instructions and all safety instructions contained therein carefully before using the product. Use the product correctly, with care and only according to the intended purpose. Non-compliance of the safety instructions may lead to damage, personal injury and to termination of the warranty. Keep these instructions in a safe and dry location for future reference. Enclose the operating instructions when handing over the product to third parties.

SAFETY NOTES

When using this tool, fundamental precautionary measures must always be ensured, in order to reduce the risk of personal injury and property damage.

- Keep children and unauthorised persons away from the work area.
- Do not let any children play with the tool or its packaging.
- Make sure that the work area is sufficiently illuminated.
- Keep the work area clean, organised, dry and free from other materials.
- Do not allow untrained persons to work with this lifting tool.
- Do not make any changes to the product.
- Only use accessories that are designed for use with lifting tools.
- Maintain the tool carefully to ensure safe use.
- Check the product for cracks, warpage, and other damage at regular intervals.
- Do not use the product if it is damaged. It have to repaired by a qualified personal.
- Store the tool in a dry and safe location out of the reach of children..

IMPORTANT NOTES ON PERSONAL SAFETY

- Operate the tool using common sense.
- Always ensure a firm foothold, in order to be able to maintain your balance at all times.
- Do not reach through moving parts of the lifting tool.
- Always work with a second person present; in event of an accident, this person can call for help or medical assistance.
- Do not use this tool if you are under the influence of medication, alcohol or drugs, or if you are tired. Read the package insert of your medicine in order, to rule out an impairment of your judgement or reflexes.
- Do not use the device if there is any doubt about the functionality of this tool.
- Always stay aware. During work, observe your workplace and carry out work with utmost care.
- Before use, check the tool for damage. If a part is damaged, use the tool again only after all damaged parts have been repaired by an authorised specialist only.
- Do not use this product for climbing, hanging or swinging. Misuse of this tool can result in serious injury.
- Only use this product on firm and level ground. Failure to do so could result in tipping over and causing serious injury and property damage.
- Do not overload the lifting tool, pay attention to the max. rated load.
- Use only attachment and adapters supplied and approved by the manufacturer. Do not make any alterations to this product.
- Use only slings or chains with a rated capacity greater than the weight of the load being lifted.
- Do not allow load to swing or drop violently while lowering or moving.
- Center load prior to lifting.
- Do not rock the vehicle while working on or around equipment.
- Do not use this product for any other use than the manufacturer specified usage.
- Secure the rotating mechanism of the mounting plate and hold the plate in place before mounting a motor on the stand.
- Make sure that the motor is centered on the mounting plate and is securely attached. Non-centered loads on the rotating mounting plate cause the motor to suddenly swing to the left or right after the rotating mechanism has been released. You should therefore always loosen the rotating mechanism very slowly and carefully.
- Only move the stand on a level surface with a motor mounted on it. Cracks and gaps in the floor can cause the stand to stall and tip over.
- Never work directly below a mounted motor.
- Use only the manufacturer-provided accessories and replacement parts for this stand. Do not make any modifications to the stand
- Failure to heed these markings may result in personal injury and/or property damage.

OCCUPATIONAL SAFETY

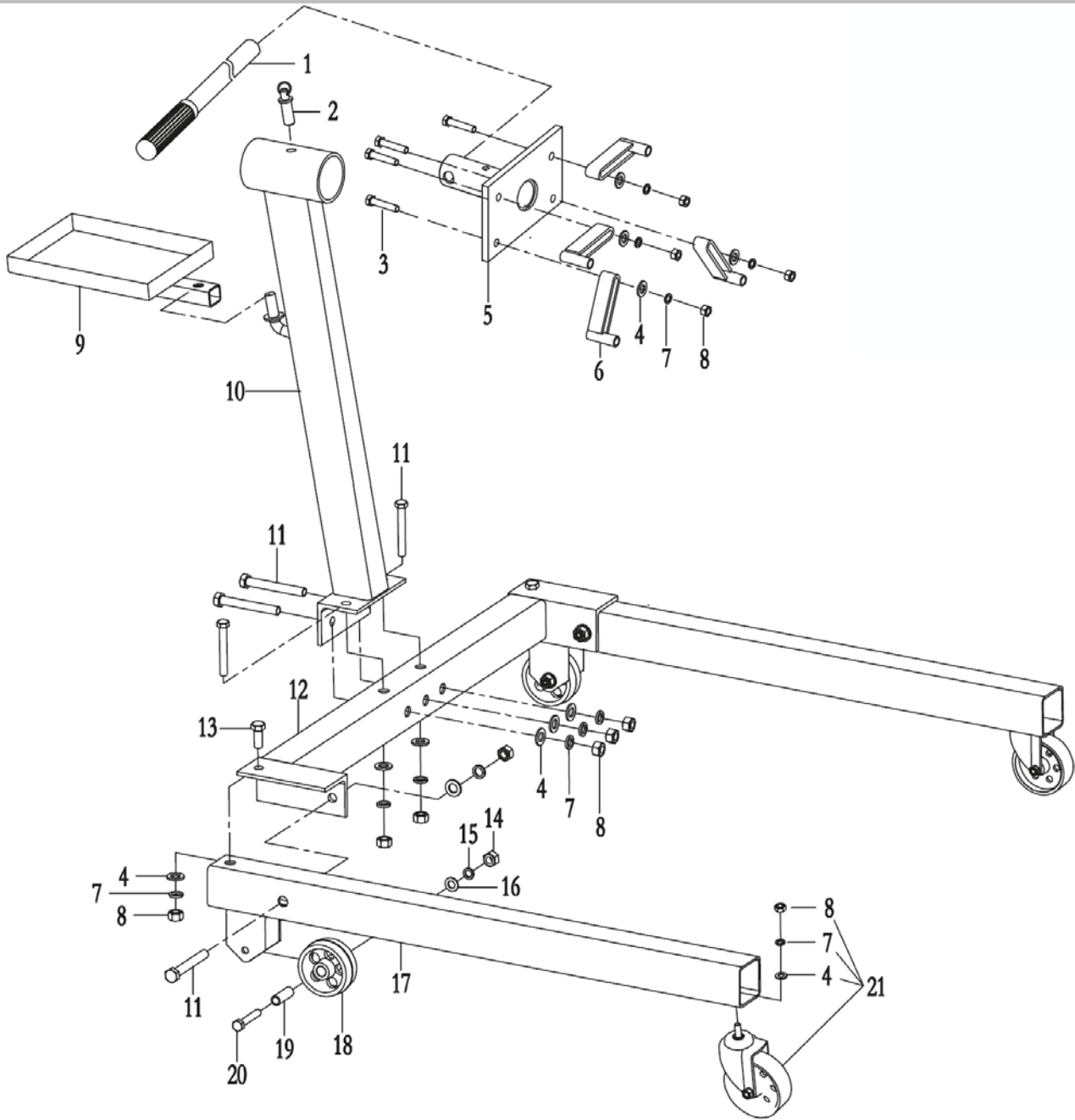
Always wear suitable protective equipment when using this tool.
Always wear following protective equipment:

- Anti-slip safety shoes
- Safety work gloves

**UNPACKING**

When unpacking, make sure that all parts are present.
Contact your dealer if parts are missing or damaged.

EXPLODED VIEW



PARTS LIST

No.	Description	QTY	
1	Stand	4	
2	Turntable	1	
3	Stand column	1	
4	Wheel	1	
5	Drip pan	1	
6	Pedestal	1	
7	Universal wheel	2	
8	Directional wheel	2	
9	Inner hexagon bolt	M10x20 mm	1
10	Washer	10 mm	1
11	Gasket	10x48 mm	1
12	Outer hexagon bolt	M14x35	4
13	Gasket	14 mm	4
14	Outer hexagon bolt	M12x25 mm	4
15	Gasket	12 mm	4
16	Eyebolt	M6	2
17	Flat gasket	6 mm	2
18	Outer hexagon bolt	M8x16 mm	16
19	Gasket	8 mm	16
20	Self-locking nut	M8	16
21	Gasket	8 mm	1
22	Washer	8 mm	1
23	Bolt	M8x16 mm	1
24	Mobile handle		1
25	Gasket	10 mm	2
26	Nut	M10	2

ASSEMBLY INSTRUCTIONS

Assemble all components as shown in the exploded view.

1. Mount the 2 fixed castors (8) on the base (6), using the screws (18), washers (19) and the nuts (20).
2. Mount the 2 swivel castors (7) on the base (6), using the screws (18), washers (19) and nuts (20).
3. Place the drip tray (5) in the base (6) and place the discs (17) and the eyebolts (16).
4. Attach the stand column (3) to the base (6), using the 6 washers (15) and the 6 external hexagon screws (16).
5. Attach the handle (24) to the column (3), using the washers (25) and nuts (26).
6. Place the crank wheel (4) on the shaft of the column (3) and fasten it, using the large washer (21), small washer (22) and the screw (23).
7. Place the turntable (2) on the shaft on the column (3) and fasten it, using the large washer (11), small washer (10) and the screw (9).
8. Attach all 4 mounting arms (1) to the turntable (2), using washers (13) and nuts (12).
9. Finally, check all screw connections are tight and tighten them if necessary.

OPERATION

Mounting engine

1. Adjust the turntable to the required position by turning the crank wheel.
2. Use an engine crane (lifting tool) to raise the engine to the level of the stand and secure it.
3. Loosen the mounting arms (do not remove them) and attach the motor to the movable mounting arms on the transmission side. To do this, use the original screws from the removed one
4. Motors (not included).
5. Check that the motor is mounted straight, tight and centered on the turntable. Tighten the mounting arms on the turntable and motor again.
6. After you have checked all connections for their strength, slowly lower the motor crane (lifting tool) with the motor and transfer the weight of the motor to the motor stand.

Engine disassembly

1. Attach the engine to an engine crane (lifting tool) using a sling or chain.
2. After the engine is attached to the lifting tool, carefully raise the engine to relieve the load on the engine stand.
3. Now loosen and remove the screws of the mounting arms from the engine.
4. After all screws have been removed, the motor is dismantled from the stand and the stand can be removed.

INSPECTION

Before each use, the stand should be completely checked for visible damage. Pay particular attention to any heavy rust, broken or cracked weld seams loose or missing parts. Check the unrestricted running properties of the rollers and the turntable rotating mechanism. Check the rotating mechanism of the turntable before load on the engine stand. If damage is found, contact your dealer and do not continue to use the engine stand until it has been repaired.

WARTUNG

Always keep the engine stand clean and well lubricated. Lubricate all fixed casters and swivel casters with engine oil or a light machine oil. Grease the roller bearings once a year. If necessary, at least once a year, coat the mounting arms and the mounting plate with a thin layer of grease.

STORAGE

Store this product in a dry place out of the reach of children.
Lubricate fixed casters, swivel casters and rotating device when not in use for a long time.

ENVIRONMENTAL PROTECTION

Recycle unwanted materials instead of disposing of them as waste. Packaging is sorted, taken to a recycling collection point and disposed of in an environmentally friendly manner. Check with your local waste authority about recycling measures.





**EU-KONFORMITÄTSERKLÄRUNG
EC DECLARATION OF CONFORMITY
DÉCLARATION „CE“ DE CONFORMITE
DECLARATION DE CONFORMIDAD UE**

Wir erklären in alleiniger Verantwortung, dass die Bauart des Produktes:
We declare that the following designated product:
Nous déclarons sous propre responsabilité que ce produit:
Declaramos bajo nuestra sola responsabilidad que este producto:

Motorständer | 800 kg (BGS Art.: 71100)

Engine Stand | 80 kg

Support moteur | 800 kg

Support moteur | 800 kg

folgenden einschlägigen Bestimmungen entspricht:
complies with the requirements of the:
est en conformité avec les réglementations ci-dessous:
esta conforme a las normas:

Machinery Directive 2006/42/EC

Angewandte Normen:

Identification of regulations/standards:

Norme appliquée:

Normas aplicadas:

EN ISO 12100:2010

Certificate No.: CMSH24032055902 / 71100

Test Report No.: MD-TCF-240320-55902

Wermelskirchen, den 25.05.2024

ppa.

Frank Schottke, Prokurist

BGS technic KG, Bandwinkerstrasse 3, D-42929 Wermelskirchen