



COIL SPRING COMPRESSOR CT1945 ORIGINAL INSTRUCTIONS



INSTRUCTIONS

It is important that you read and understand this instruction manual before using this product. You will need this manual for the safety warnings and precautions, assembly, operating, parts list and assembly diagram. Failure to follow instructions and safety warnings may result in personal injury or property

EC DECLARATION OF CONFORMITY

We CANNON TOOLS LTD

20 Station road, Rowley Regis, West Midlands, B65 0JU.U.K.

Declare that the following machine complies with the appropriate basic safety and health requirements of the EC Directive based on its design and type, as brought into circulation by us.

In case of alteration of the machine, not agreed upon by us, this declaration will lose its validity.

Product description: COIL SPRING COMPRESSOR

Model: CT1945

Applicable EC Directives:

EC Machinery Directive 2006/42/EC

Harmonized standards

EN ISO 12100, EN 1494

20 Station Road, Rowley Regis, West Midlands, B65 0JU.U.K.

Mr. Gurcharan Tony Singh Sanghera

Managing Director

CANNON TOOLS LTD



2017-06-16



SAFETY WARNINGS AND PRECAUTIONS

1. **KEEP WORK AREA CLEAN AND DRY.** Cluttered, damp or wet work areas invite injuries.
2. **KEEP CHILDREN AWAY FROM WORK AREA.** Do not allow children to handle this product.
3. **STORE IDLE EQUIPMENT.** When not in use, tools and equipment should be stored in a dry location to inhibit rust. Always lock up tools and equipment and keep out of reach of children.
4. **DO NOT USE THIS PRODUCT IF UNDER THE INFLUENCE OF ALCOHOL OR DRUGS.** Read warning labels on prescriptions to determine if your judgment or reflexes are impaired while taking drugs. If there is any doubt, do not attempt to use this product.
5. **DRESS SAFELY.** Non-skid footwear or safety shoes should be used when working with this product. So not wear loose clothing or jewelry as they can become caught moving parts. Wear a protective hair covering to prevent long hair from becoming caught in moving parts. If wearing a long-sleeve shirt, roll sleeves up above elbows.
6. **DO NOT OVERREACH.** Keep proper footing and balance at all times to prevent tripping, falling, back injury, etcetera.
7. **STAY ALERT.** Watch what you are doing at all times. Use common sense. Do not use this Product when you are tired or distracted from the job at hand.
8. **CHECK FOR DAMAGED PARTS.** Before using this product, carefully check that it will operate properly and perform its intended function. Check for damaged parts and any other conditions that may affect the operation of this product. Replace or repair damaged or worn parts immediately.
9. **REPLACEMENT PARTS AND ACCESSORIES.** When servicing, use only identical replacement parts. Only use accessories intended for use with this product. Approved accessories are available from distributor.
10. **MAINTAIN THIS PRODUCT WITH CARE.** Keep this tool clean and dry, and keep saw blades clean and sharp for better and safer performance.
11. **MAINTENANCE:** For your safety, service and maintenance should be performed regularly by a qualified technician.
12. **USE THE RIGHT PRODUCT FOR THE RIGHT JOB.** There are certain applications for which this product was designed. No not use small equipment, tools or attachments to do the work of larger industrial equipment, tools or attachments. Do not use this Product for a purpose for which it was not intended.

ASSEMBLY INSTRUCTIONS

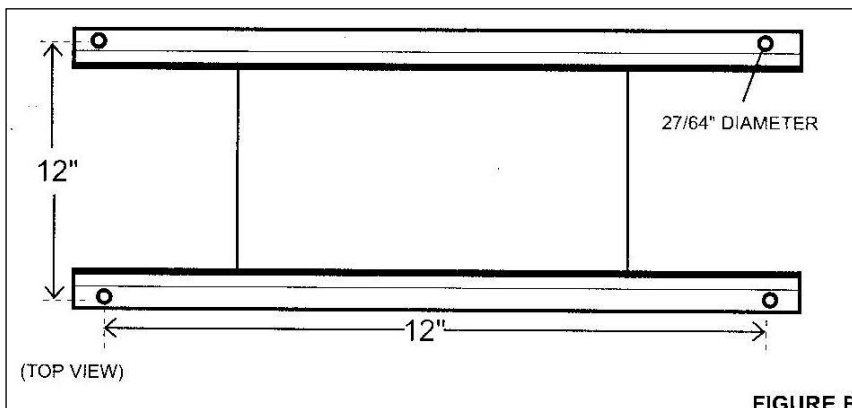
For additional references to the parts listed below, refer to the Assemble Diagrams.

To Assemble the Strut Spring Compressor:

1. Slowly depress the Discharge Pedal (#32) to lower the Power Unit (#21A) all the way down.
2. Lightly grease all four sides, from top to bottom, of the Upright (#1A)
3. Slide the Lower Strut Support (#10A) down the Upright (#1A) until the Lower Strut Support rests firmly on the Cylinder (#8) of the Power Unit (#21A)
4. Slid the Upper Strut Support (#2A) down the Upright (#1A) until the two holes in the Upper Strut Support align with two holes in the Upright. Then, insert two Bolts (#3A) through the aligned holes in the Upper Strut Support and Upright. Firmly secure the Upper Strut Support to Upright by wrench tightening two Nuts (#22A) onto the Bolts.
5. Insert the Spring Clasp Assemble (#4A or #16A) onto the Upper Strut Support with the pin(#9A) and Bolt (#5A).
6. Insert the Small Spring Clasp Assembly (#4A or #16A) onto the Lower Strut Support (#10A) with the pin(#9A).

To Securely Mount The Strut Spring Compressor Onto A Floor:

1. NOTE: For better and safer product performance, it is recommended that the Strut Spring Compressor be mounted only on a clean, solid, flat, level, concrete surface floor that is capable of supporting the weight of the product and the spring it's supporting.
2. Drill four $27/64$ " diameter holes approximately 3" deep in the surface of the concrete floor. Drill the holes according to the dimensions shown in Figure B.



3. With assistance, align the four mounting holes in the Foot Brackets (#14A) with the holes in the concrete floor.
4. Firmly secure the Strut Spring Compressor to the concrete floor, using four 27/64"x3-1/4" long concrete molly bolts (not provided).

OPERATING INSTRUCTIONS

NOTE: For additional references to the parts listed below, refer to the Assembly Diagrams on pages 5 and 6 of this manual.

To Secure The Vehicle's Strut Assembly Onto Strut Spring Compressor:

1. NOTE: For the purpose of this manual, it is assumed that this tool will be used to remove a Strut Spring from a generic type of Strut Assembly previously removed from a vehicle.
2. Loosen the Piston Rod Nut on top of the Shock 1 turn. BUT DO NOT REMOVE IT. Caution: The Spring has a considerable amount of energy stored in it. Do not, under any circumstances, remove the Piston Rod Nut without first compressing the spring. If you do not compress the spring first, the Piston Rod Nut and the Shock will fly off at high speed, and may cause serious personal injury.
3. De-grease the spring to be compressed. Never attempt to compress a dirty spring.
4. Make sure you have the proper size Spring Clasp(#4A or #16A) for the Spring.
5. Depress the Discharge Pedal (part#32), and lower the Ram (part# 21A) in its lowest position.
6. Insert the lowest portion of the vehicle's Shock into the spring clasp(#4A or #16A). Make sure the vehicle's Lower Spring Cap is resting on the top surface of the Lower Strut Support.

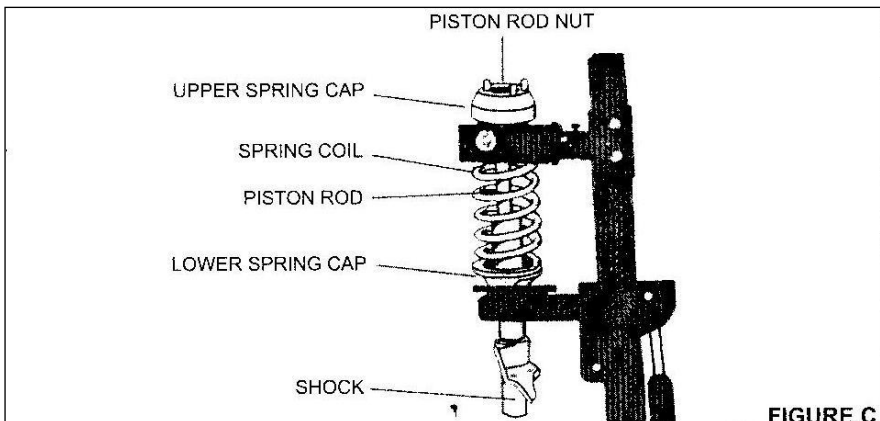


FIGURE C

7. Observe the approximate height at which the top coil of the vehicle's Spring reaches. Then, temporarily remove the vehicle Strut Assembly from the Strut Spring Compressor.
8. While holding the Big Spring Clasp (part#4A) in place, remove the two Bolts (part#3A) and Nuts (part#22A) which secure the Upper Strut Support (part#2A) in position.
9. Then, slide the Upper Strut Support (part#2A), and its attached Big Spring Clasp (part#4), up or down along the Upright (part#1A) until the Big Spring Clasp is at about the same height as was the top coil of the vehicle's Spring is the previous Step above.
10. Once the desired height of the Big Spring Clasp (part#4) is reached, secure the Upper Strut Support (part#2A), and its attached Big Spring Clasp, on the Upright (part#1A), by re-inserting and wrench tightening the two Bolts (part#3A) and Nuts (part#22A) into the holes in the Upper Strut Support and Upright.
11. Then, re-position the vehicle Strut Assembly onto the Strut Spring Compressor, following the instruction in Step #6 above.
12. Once the vehicle's Strut Assembly is placed on the Strut Spring Compressor, make the recessed Spring Clasp(#4A) fully contact the furthestmost top and bottom spring coils within the strut assembly.
13. Next, slowly pump the Foot Pedal (part#14) to raise the entire vehicle's Struct Assembly until the Spring Clasp(#4A) fully encircle the back, right, and left sides of the vehicles' top spring coil. Also make sure the bottom edge of the vehicle's Upper Spring Cap is resting on the top edge of the Spring Clasp(#4A).
14. Check to make sure that both the top and bottom of the vehicle's Strut Assembly is firmly secured in place.

To Compress The Vehicle's Spring. Remove and Replace The Strut Assembly Parts:

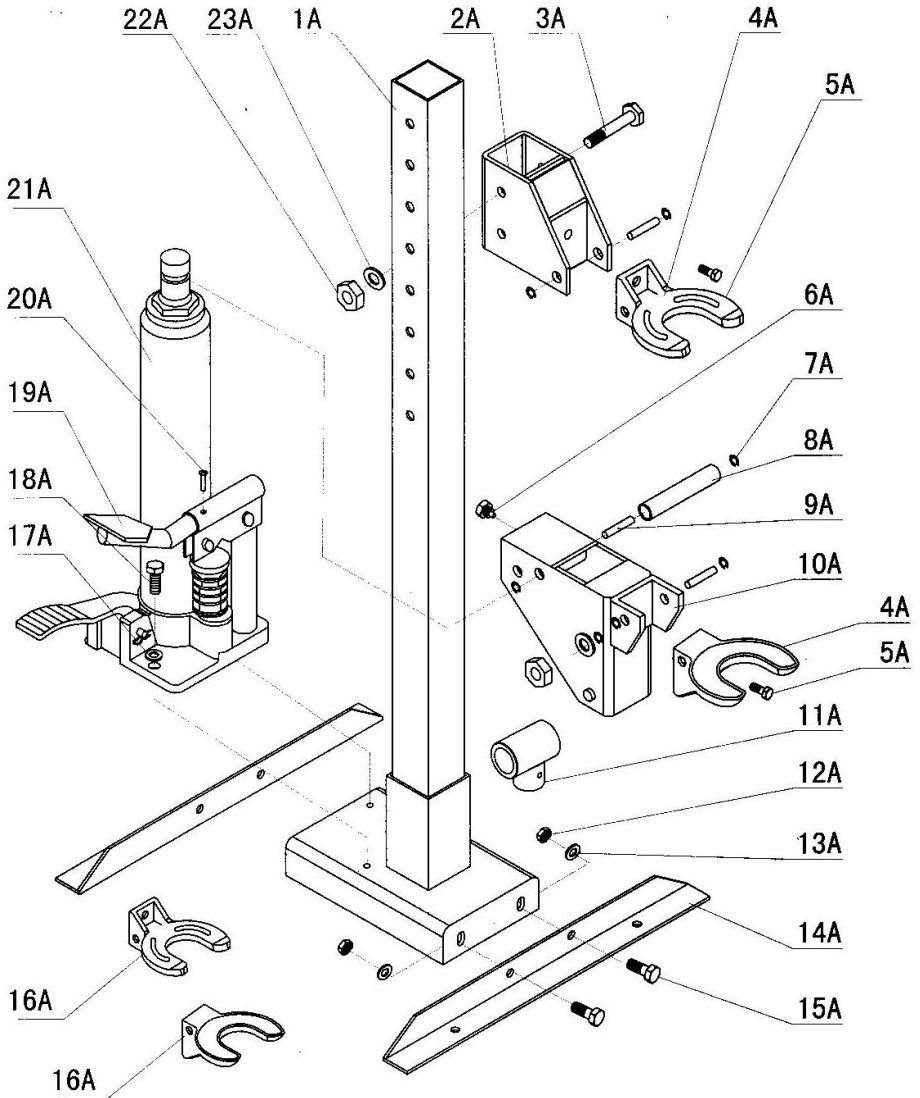
1. Once the vehicle's Strut Assembly is firmly secured onto the Strut Spring Compressor, slowly pump the Foot Pedal (part#14) to compress the vehicle's Spring.
2. When the vehicle's Spring has been compressed, unscrew and remove the vehicle's Piston Rod Nut on the Shock.
3. Next, slowly depress the Discharge Pedal (part#32) to lower the Ram(part#21A) all the way down and release the load on the Strut Spring Compressor.
4. The vehicle's Strut Assembly can now be removed from the Strut Spring Compressor in order to replace the vehicle's Strut Assembly parts (i.e., Upper Spring Cap, Spring, Lower Spring Cap, Shock ,Shock Cap, etc)

To Reassemble The Vehicle's Strut Assembly Parts:

1. With the exception of the vehicle's Upper Spring Cap and Piston Rod Nut reassemble the vehicle's remaining Strut Assembly Parts.
2. Next, follow the Steps previously discussed in this manual to secure the vehicle's Strut Assembly onto the Strut Spring Compressor and to compress the vehicle's spring.
3. When the vehicle's spring has been compressed, place the vehicle's Upper Spring Cap in the top coil of the spring. Next, secure the Upper Spring Cap to the vehicle's Strut Assembly by wrench tightening the Piston Rod Nut onto the Piston Rod.
4. Next, slowly depress the Discharge Pedal (#32) to lower the Ram (part#21A) all the way down and release the load on the Strut Spring Compressor.
5. The vehicle's repaired Strut Assembly can now be removed from the strut Spring Compressor.

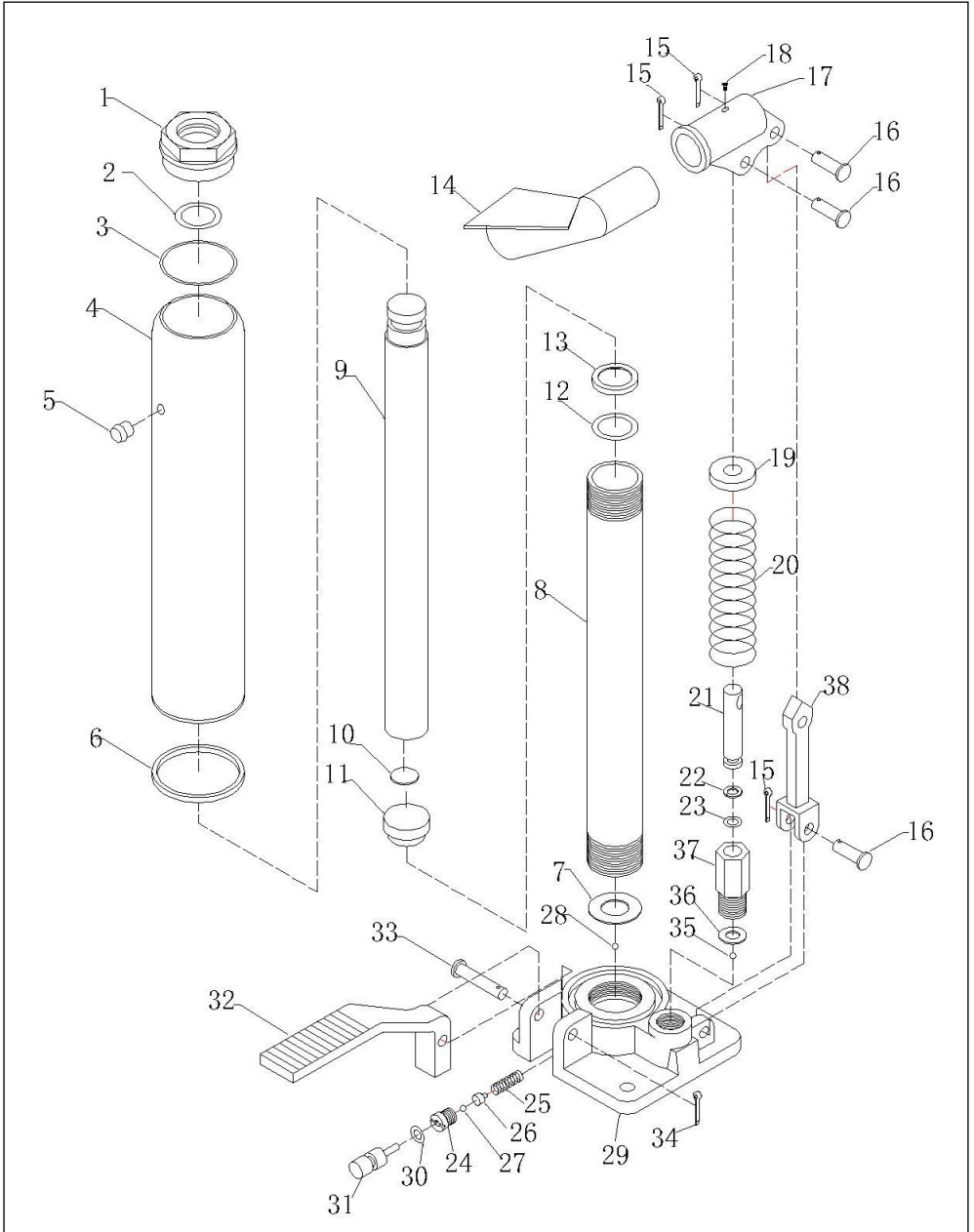
DRAWING A & PARTS LIST

Part #	Description	Qty	Part #	Description	Qty
1A	Post Assembly	1	13A	Flat Washer Ø10	4
2A	Strut Support, Upper	1	14A	Foot Bracket	2
3A	Bolt M12x90	2	15A	Bolt M10x25	4
4A	Big Spring Clasp	2	16A	Small Spring Clasp	2
5A	Bolt M12x25	2	17A	Flat Washer Ø8	2
6A	Lock Screw	1	18A	Bolt M8x20	2
7A	Snap Ring	10	19A	Foot Pedal	1
8A	Bushing	2	20A	Screw	1
9A	Pin	5	21A	Power Unit Assembly	1
10A	Strut Support, Lower	1	22A	Nut M12	2
11A	Connector	1	23A	Flat Washer Ø12	2
12A	Nut M10	4			



NOTE: Some parts are listed and shown for illustration purposes only, and are not available individually as replacement parts.

PUMP DRAWING & PARTS LIST



Part	Description	Qty	Part #	Description	Qty
1	Tank Nut	1	20	Compressing Spring	1
2	O-Ring	1	21	Pump Core	1
3	Rectangle Ring	1	22	Retaining Ring	1
4	Outer Case	1	23	O-Ring	1
5	Oil Fill Plug	1	24	Adjustable Screw	1
6	Rectangle Ring	1	25	Adjustable Spring	1
7	Copper Washer	1	26	Ball	1
8	Cylinder	1	27	Steel Ball Ø4	1
9	Piston Rod	1	28	Steel Ball Ø6	1
10	Retaining Ring	1	29	Base	1
11	Piston	1	30	O-Ring	1
12	O-Ring	1	31	Discharge Valve Rod	1
13	Bowl Washer	1	32	Discharge Pedal	1
14	Foot Pedal	1	33	Pin	1
15	Cotter Pin	3	34	Cotter Pin	1
16	Pin	3	35	Steel Ball	1
17	Pedal Holder	1	36	Pump Washer	1
18	Screw	1	37	Pump Case	1
19	Spring Cover	1	38	Linkage Rod	1

NOTE: Some parts are listed and shown for illustration purposes only, and are not available individually as replacement parts.

CANNON TOOLS LTD
Add: 20 station road, Rowley Regis, west midlands,B65 0JU.U.K.
Made in China