



## 12V MINI DIESEL PUMP 51MM CT5262



### TECHNICAL SPECIFICATIONS:

Voltage: 12V(DC)

Power: 60W

Load current: 4Amps

Outlet diameter: 19mm

Motor Racing Speed: 8500r/min

Diameter: 51mm


Flowing: 30L/min

Head: 3m

Self-Priming: Yes

With longer filter

Length of cable include battery clips: 3m

 **CAUTION:** Please read this manual carefully before operating the pump!

## EC DECLARATION OF CONFORMITY

We **CANNON TOOLS LTD**

20 Station road, Rowley Regis, West Midlands, B65 0JU.U.K.

Declare that the following machine complies with the appropriate basic safety and health requirements of the EC Directive based on its design and type, as brought into circulation by us.

In case of alteration of the machine, not agreed upon by us, this declaration will lose its validity.

**Product description : 12V MINI DIESEL PUMP 51MM**

**Model: CT 5262**

Applicable EC Directives:

EC Machinery Directive 2006/42/EC

EC Low Voltage Directive 2014/35/EU

EC Directive of Electromagnetic Compatibility 2014/30/EU

**Harmonized standards:**

EN ISO 12100, EN 60335-1, EN 60335-2-41, EN 55014-1,

EN 55014-2, EN 61000-3-2, EN 61000-3-3, EN 61000-6-1, EN 61000-6-3

20 Station Road, Rowley Regis, West Midlands, B65 0JU.U.K.

Mr. Gurcharan Tony Singh Sanghera

Managing Director

**CANNON TOOLS LTD**



2019-12-04



**Remarks: Correctly install the positive plate and negative plate. Must be ensured that bottom of pump fully submerged into the liquid**

**WARNING:**

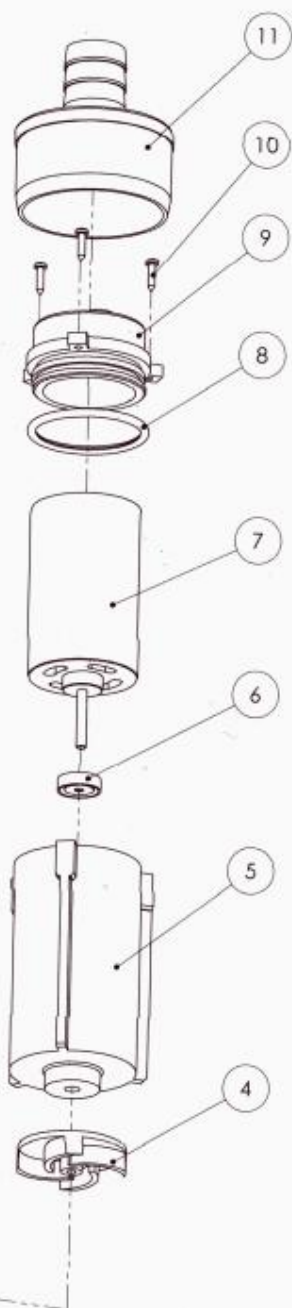
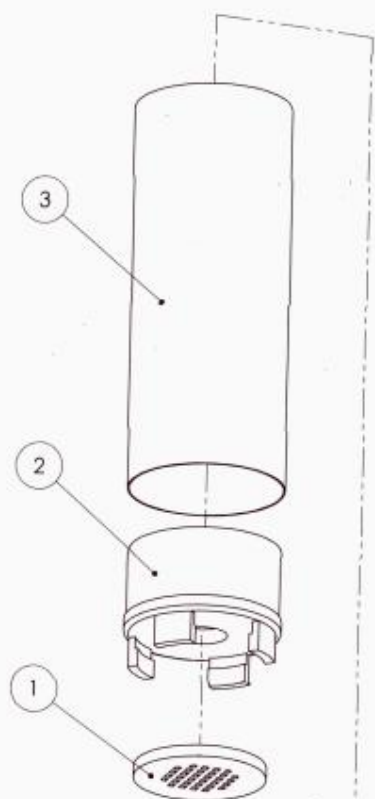
1. The pump is not explosion- proof. It can not work in explosion danger area.
2. The pump is not antiseptic. It can not be used for transporting chemical liquid.
3. Pump is applied to diesel, kerosene.

**OTHER APPLICATIONS INCLUDE:**

Bilge discharging of boats and similar vessels  
Storage tanks to various vehicles.

**FAILURE & REPAIR:**

<b>Failure</b>	<b>Reason</b>	<b>Treatment</b>
No oil comes from diesel pump for the first use	Whether (+) (-) is installed correctly	Check the (+) (-) and adjust
	Whether outlet hose leaks	Repair outlet hose and lock the hose lock tightly
oil pump capacity is less	Whether the voltage is lower	Increase the voltage, but don't exceed the rated voltage
	Whether suction or lift exceeds range	Adjust the suction and lift properly
	Foreign bodies block the filter	Remove the foreign bodies
	Whether the small impeller is broken	Change new impeller



## 1013-Submersible pump spare parts list

Item	Name	QTY
1	Filter	1
2	Base	1
3	Pump case	1
4	Impeller	1
5	motor case	1
6	oil seal	1
7	Motor	1
8	seal ring33x21	1
9	Seal cap	1
10	Screw2.5x10	1
11	Upper cover	1

CANNON TOOLS LTD

Add: 20 station road, Rowley Regis, west midlands,B65 0JU.U.K.

Made in China