



CURV-O-MARK
PRODUCT BROCHURE



CURV-O-MARK

PIPE MARKERS



4-7

***LEVELS AND FLANGE
ALIGNING TOOL***



8-10

WRAP-A-ROUNDS



11

CURV-O-MARK CONTOUR PIPE MARKERS



- CENTER HEAD STANDARD -



- CENTER HEAD JUMBO -



- DIAL AND LEVEL -

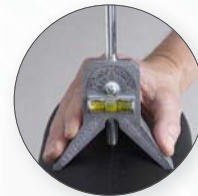


- CENTER PUNCH -

CURV-O-MARK CENTER HEAD STANDARD

CENTER HEAD STANDARD (#14775)

The centering head aids in the setting of centre lines, establishing angles and marks, for butt-ins, locating points inside pipes and tanks, laying out keyways and measuring declivity. The standard model is used on pipe 1/2" diameter and larger and is fitted with an adjustable dial set level and a manually operated hardened centering pin.



CENTER HEAD JUMBO (#14776)

This model is used on pipe 1" diameter and larger and is fitted with an adjustable dial set level and a spring-loaded hardened centering pin which eliminates the need for a hammer. Just make the alignment and press the trigger.

DIAL AND LEVEL (#14797)

The DSL is an adjustable bubble protractor used with a number of Curv-O-Mark tools (see the related product links). The protractor covers 180 degrees through two 90 degree quadrants, reading in 2-1/2 degree increments. The bubble is cast in the aluminum dial.

SPECIFICATIONS

Item no.	Type	Jackson item no.	Jackson Sku. no.
35170210	CENTER HEAD STANDARD	J1879	14775
35170225	CENTER HEAD JUMBO	J1880	14776
35170280	DIAL AND LEVEL	J1905	14797
35170290	CENTER PUNCH	J1906	14798

CURV-O-MARK CONTOUR PIPE MARKERS



CURV-O-MARK RADIUS MARKERS



CONTOUR RADIUS MARKERS

Models available in four sizes for scribing circles up to 80" in diameter 40" radius. All are a folding type design—the three smaller models will fit conveniently into a shirt pocket.

All have sturdy friction joints to maintain rigidity and accuracy, and are made from lightweight, rustproof aluminum for long wear.

A soapstone crayon is already installed in each radius marker. The scribe holder will accept round square or flat soapstone crayon, pencil, or steel point scribe.

SPECIFICATIONS

Item no.	Type	Jackson item no.	Jackson Sku. no.
35170400	MINI	J1884	14780
35170410	SMALL	J1885	14781
35170420	STANDARD	J1886	14782
35170430	JUMBO	J1887	14783



CURV-O-MARK CIRCLE-ELLIPSE PROJECTOR



CIRCLE-ELLIPSE PROJECTOR Ø38-457 MM

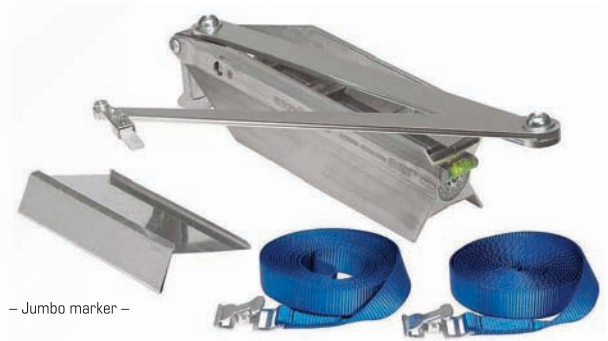
Perfect circles, ellipses or oblong circles can now be easily made on any irregular flat or round surface. The Projector features a protractor with sliding rods and an adjustable lever to lock in the specified layout. A strong, 20-pound pull magnetic base holds the Projector in position during layout.

A durable web strap (included) holds the unit secure on non-magnetic surfaces and can be used on either side of the vertical column. The Projector can also be used to lay out lateral intersections of different diameter pipes, or to project circles from 1-1/2 to 18 in. diameter on flat surfaces intersecting at angles from 0 to 70 degrees from vertical. Attachments to develop larger diameter circles are available. The Projector is equipped with a soapstone crayon and also works with chalk, pencil or steel scribe.

SPECIFICATIONS

Item no.	Type	Jackson item no.	Jackson Sku. no.
35170500	CIRCLE-ELLIPSE PROJECTOR	J1888	14784

CURV-O-MARK CONTOUR PIPE MARKERS



CURV-O-MARK STANDARD AND JUMBO MARKER

CONTOUR STANDARD MARKER

The Curv-O-Mark Contour Marker is a compact, timesaving tool used to lay out pipe and structural steel joints. Laterals at any angle, tees, wyes, crosses, elbows—any type or size of joint can be quickly and precisely laid out. No more complicated mathematical formulas. No more cut and try. No more needless material waste. The Contour Marker can be used to lay out pipe from 1-1/2 to 18 in. diameter, or structural steel members up to 18 in.

The Contour Marker consists of an X-shaped frame, calibrated protractor, and a triple-jointed marking arm and holder. The holder accepts a soapstone crayon (included), felt pen or pencil. The frame easily folds into a compact tool that fits into a pocket or carrying case. It can be used rightside up or upside down, depending on the direction of the line to be scribed. The protractor is calibrated on both sides—one in degrees, the other in rise-inches-per-foot—to service any type of measurement need.



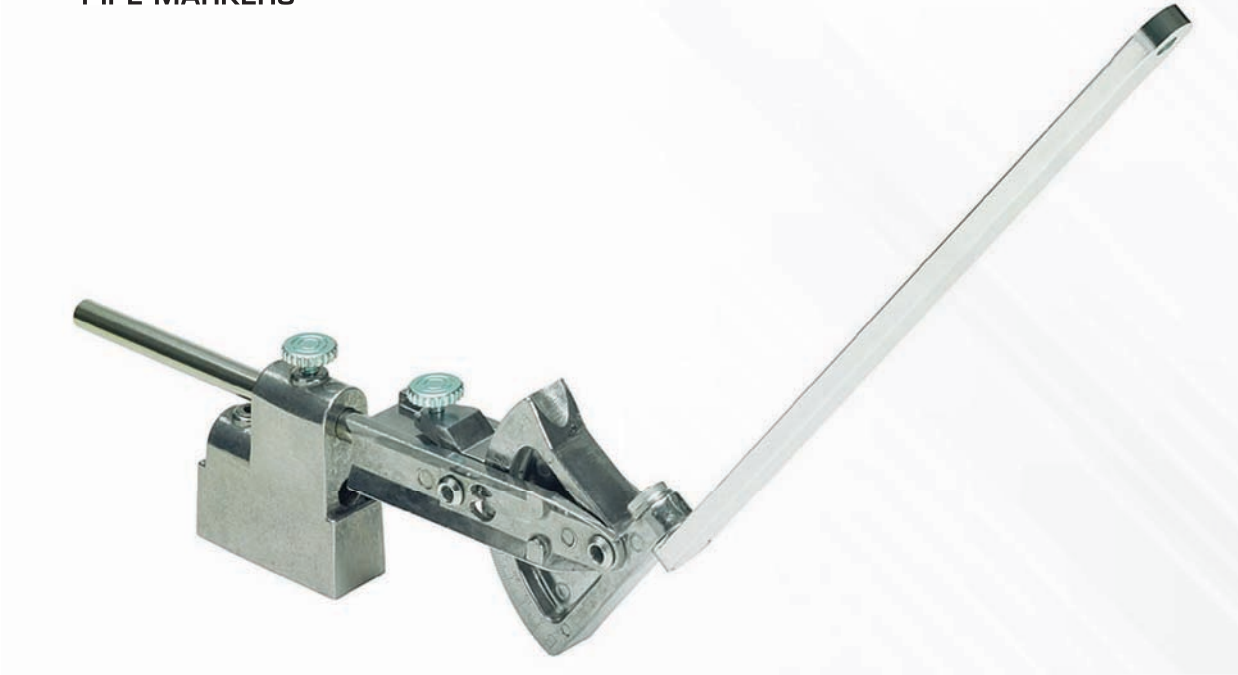
The unit comes with a Structural Adaptor designed to simplify the layout of structural joints, including I-beams, angles, channels, square tubing and similar shapes.

The optional Combination Adaptor Accessory allows the Contour Marker to lay out joints on larger size pipe, as well as scribe compound angles with just one setting. The Contour Marker is made from durable, lightweight aluminum. It requires minimal maintenance, only occasional oiling of the joints, to provide long service life.

SPECIFICATIONS

Item no.	Type	Jackson item no.	Jackson Sku. no.
35170510	STANDARD MARKER	J1874	14771
35170410	JUMBO MARKER	J1877	14781
35170522	ADAPTOR FOR STANDARD MARKER	J1875	14772
35170430	ADAPTOR FOR JUMBO MARKER	J1878	14774

CURV-O-MARK CONTOUR PIPE MARKERS



CURV-O-MARK WELDING PROTRACTOR

CONTOUR WELDING PROTRACTOR

This 90-degree protractor has a matching locking lever to set and hold the tool at the desired angle.

It is equipped with a 5/8 in. by 10 in. tapered arm to complete finding of angles or desired bends, or to determine any portions of elbows.

The tool is mounted in a 3/4-in. wide frame with a 3/8-in. by 6-in. cast-in rod. It comes with a 25-pound pull magnetic base for holding the protractor frame in position.

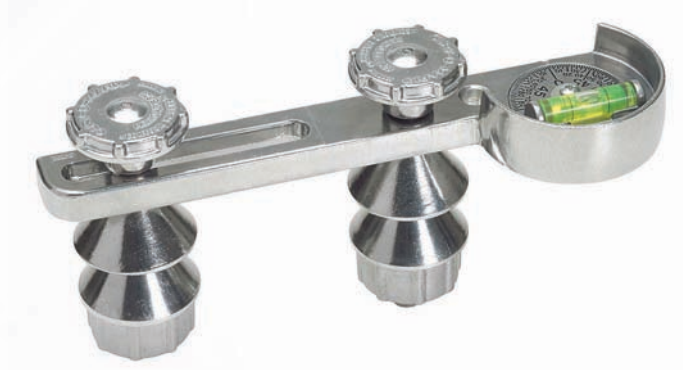
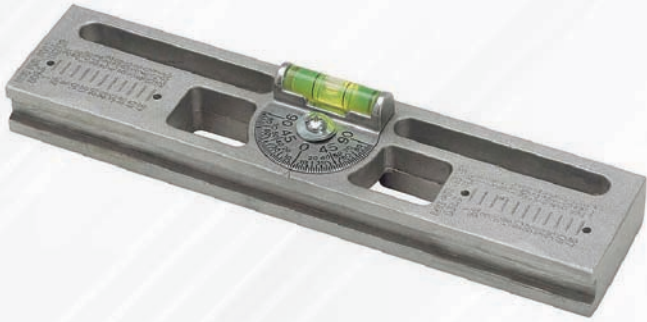
The unit can be used manually or with a magnetic base, as shown above.



SPECIFICATIONS

Item no.	Type	Jackson item no.	Jackson Sku. no.
35170330	WELDING PROTRACTOR	J1882	14778

CURV-O-MARK CONTOUR LEVELS AND FLANGE ALIGNING TOOLS



CURV-O-MARK PRO-MAG LEVEL

CURV-O-MARK PRO-MAG LEVEL



CONTOUR PRO-MAG LEVEL

A lightweight, easy to use tool for determining angles, the Pro-Mag Level has two cast-in 25 pound pull magnets that hold securely to any steel surface.

The unit has a 360 degree adjustable DSL with two 90 degree quadrants graduated in 2-1/2 degree increments. Also cast in are tables used to convert degree-of-angle to rise in inches per foot or millimeters per meter. A groove on the bottom edge permits use on a small pipe.

The unit is ideal for pipefitter, welder, jig builder or anyone who has to determine angles or do setup work. Craft required to use a level or a plumb bob.

CONTOUR PRO-MAG LEVEL

A versatile tool that can be used as a dial degree utility level or, with attachments, for two-holing flange alignment. The unit is made of cast aluminum with a protective housing containing an adjustable DSL. It is also fitted with a threaded, self-aligning conical spacer and conical nut and bolt units for fastening the Level to a pipe flange.

One of the nut and bolt units is stationary, while the other slides up to 5-1/2 in. along a slot in the level to accommodate various flange bolt hole spacings from 2 to 5-1/2 inches. The body of the tool is 1/2-in. thick with a machined surface. The level bubble is protected from weld splatter and breakage with a built-in housing around the DSL.

SPECIFICATIONS

Item no.	Type	Jackson item no.	Jackson Sku. no.
35170330	PRO-MAG LEVEL	J1881	14777

SPECIFICATIONS

Item no.	Type	Jackson item no.	Jackson Sku. no.
35170330	PRO-MAG LEVEL	J1891	14786

SPARE PART

Item no.	Type	Jackson item no.	Jackson Sku. no.
35170280	DIAL AND LEVEL	J1905	14797

CURV-O-MARK CONTOUR

LEVELS AND FLANGE ALIGNING TOOLS



CURV-O-MARK
PIPE FLANGE ALIGNER



CURV-O-MARK
FLANGE ALIGNER BASE



CONTOUR PIPE FLANGE ALIGNER

Fast, accurate pipe construction is possible with this self-determining flange aligning tool.

The Aligner inserts easily into pipe, centers snugly against the inside pipe diameter and automatically aligns with the pipe axis. The Pipe Flange Aligner is quickly adjustable for all types of flanges or pipe sizes ranging from 3 to 12 in. diameter.

CONTOUR FLANGE ALIGNER BASE

Remove the difficulty of flange aligning and squaring with a simple tool that holds a square in the needed position without tying up one's hands. The Curv-O-Mark Aligner Base is notched at either end for ease in aligning on the centerline of the pipe and has two 25-pound pull, cast-in magnets for holding either a flat horizontal or vertical position.

The Base will accept either leg of a standard or combination square and will work on pipe diameters from 1 in. on up, requiring only the extension of the legs of the square being used to accommodate larger diameters. The Flange Aligner Base is made from lightweight, durable aluminum.

SPECIFICATIONS

Item no.	Type	Jackson item no.	Jackson Sku. no.
35170375	PIPE FLANGE ALIGNER	J1883	14779
35170380	FLANGE ALIGNER BASE	J1903	14795

CURV-O-MARK CONTOUR LEVELS AND FLANGE ALIGNING TOOLS



CURV-O-MARK UNIVERSAL LEVEL

CONTOUR UNIVERSAL LEVEL

The Curv-O-Mark Universal Level is a multi-purpose tool. The unit features a 360-degree adjustable protractor dial bubble (DSL) that ensures accurate leveling and permits the following additional uses:

- Setting a predetermined pitch of a string of pipe
- Setting the angle of laterals to a precise degree
- Trueing vertical runs
- Two-holing flanges

The Level has two cast-in 25-pound magnets (exerting a 50- pound pull) to securely hold the unit in place on any steel surface, including the underside of a pipe or beam. This permits hands-free leveling, a welcome aid in tight spots. And, since the bubble is mounted on a protractor dial, the Level may be used in any position and still read accurately. While one face of the Level is magnetic, both faces have deep, cast-in grooves that make the Level self-centering on the contour of the pipe.



Because the magnets are cast in, they do not interfere with the use of the Level on nonmagnetic materials, such as aluminum, copper, lumber, stone or other materials requiring leveling.

For aligning pipe flanges (two-holing), the Level comes with a two-threaded, self-aligning conical spacer and conical nut and bolt units. These are designed to fit any size bolt hole spaced between 2-1/4 in. to 8-in. centers on flanges. This permits the orientation of flange bolt holes for any size pipe. Designed primarily for pipefitting applications, the Universal Level is a valuable tool for any craft required to use a level or a plumb bob.

SPECIFICATIONS

Item no.	Type	Jackson item no.	Jackson Sku. no.
35170330	UNIVERSAL LEVEL	J1904	14796

SPARE PART

Item no.	Type	Jackson item no.	Jackson Sku. no.
35170280	DIAL AND LEVEL	J1905	14797

CURV-O-MARK WRAP-A-ROUND

WRAP-A-ROUNDS



CURV-O-MARK STANDARD MARKER

WRAP-A-ROUND STANDARD MARKER

An inexpensive tool for marking straight lines around pipe, or for use as a straight edge. Made out of flexible gasket material, with good resistance to heat and cold. All Wrap-A-Rounds are available in two colors.

These designate material type and service temperature.

- “B” (Black) material has a service temperature up to 177°C.
- “GG” (Gray) material is used for high temperature applications up to 288°C.



Both material types are asbestos free. All sizes are printed with a inch and metric scale, pitch chart, tangent chart and other useful markings.

SPECIFICATIONS

Item no.	Type	Size	Dimension	Pipe diameter	Max. Temperature	Jackson Sku. no.
35170610	“B” (Black)	MEDIUM	3.88" x 4'	3" to 6"	175°C / 350°F	14752
35170620	“B” (Black)	LARGE	3.88" x 6'	3" to 10"	175°C / 350°F	14753
35170630	“B” (Black)	X-LARGE	5.00" x 7'	4" to 12"	175°C / 350°F	14754
35170640	“B” (Black)	XX-LARGE	5.00" x 9'	6" to 16"	175°C / 350°F	14756
35170710	“GG” (Gray)	MEDIUM	3.88" x 4'	3" to 6"	280°C / 550°F	14763
35170720	“GG” (Gray)	LARGE	3.88" x 6'	3" to 10"	280°C / 550°F	14764
35170730	“GG” (Gray)	X-LARGE	5.00" x 7'	4" to 12"	280°C / 550°F	14766
35170740	“GG” (Gray)	XX-LARGE	5.00" x 9'	6" to 16"	280°C / 550°F	14767

Diesella

- din globale værktøjs leverandør