

Precautions

Our products are designed to be used correctly and with care for the purpose for which they are intended. No liability is accepted by the Tool Connection for incorrect use of any of our products, and the Tool Connection cannot be held responsible for any damage to personnel, property or equipment when using the tools. Incorrect use will also invalidate the warranty.

If applicable, the applications database and any instructional information provided has been designed to offer general guidance for a particular tool's use and while all attention is given to the accuracy of the data no project should be attempted without referring first to the manufacturer's technical documentation (workshop or instruction manual) or the use of a recognised authority such as Autodata.

It is our policy to continually improve our products and thus we reserve the right to alter specifications and components without prior notice. It is the responsibility of the user to ensure the suitability of the tools and information prior to their use.

12 April 2017 10:13 AM

Guarantee

If this product fails through faulty materials or workmanship, contact our service department direct on: **+44 (0) 1926 818186**. Normal wear and tear are excluded as are consumable items and abuse.



Distributed by The Tool Connection Ltd

Kineton Road, Southam, Warwickshire CV47 0DR
T +44 (0) 1926 815000 F +44 (0) 1926 815888
info@toolconnection.co.uk www.toolconnection.co.uk

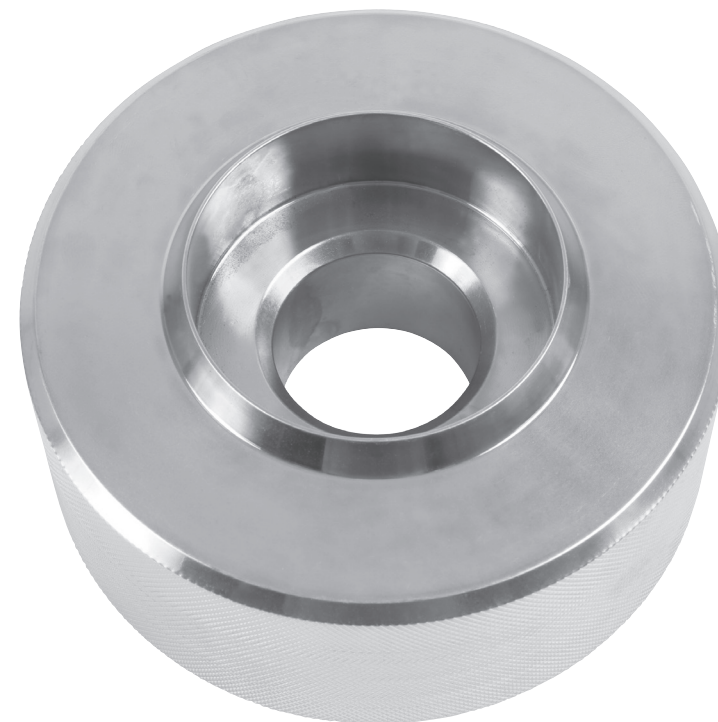


LASER[®]

6907

DSG Clutch Gauge Block

Volkswagen/Audi



www.lasertools.co.uk

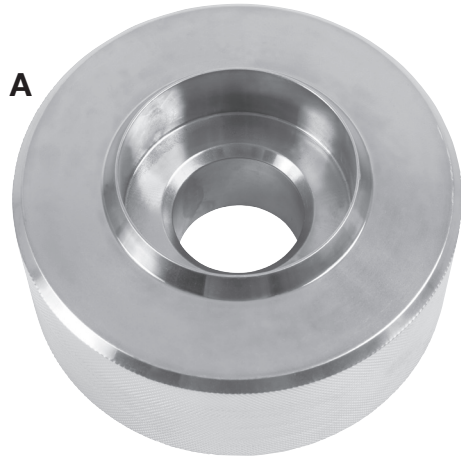
www.lasertools.co.uk

DSG Clutch Gauge Block – Volkswagen/Audi

This DSG (Direct-Shift Gearbox) clutch Gauge Block is designed to check and adjust the position of the clutch engagement bearings.

- Application: DSG (7 speed) gearboxes found in the Volkswagen/Audi ranges (VAG) from 2011 onwards.
- Equivalent to T10466.
- Used to set and adjust the position of clutch engagement bearings.
- Use with Laser 6718 DSG clutch kit, Laser 5371 straight edge and a suitable vernier caliper Laser 4263.
- Manufactured from S45C steel.

Components



Ref	OEM Number	Description
A	T10466	DSG Clutch Gauge Block

The following information is for guidance only. Please refer to OEM derived data such as the vehicles manufactures own data or Autodata.

The use of this clutch tool is purely down to the user's discretion and The Tool Connection Ltd cannot be held responsible for any damage caused what so ever.

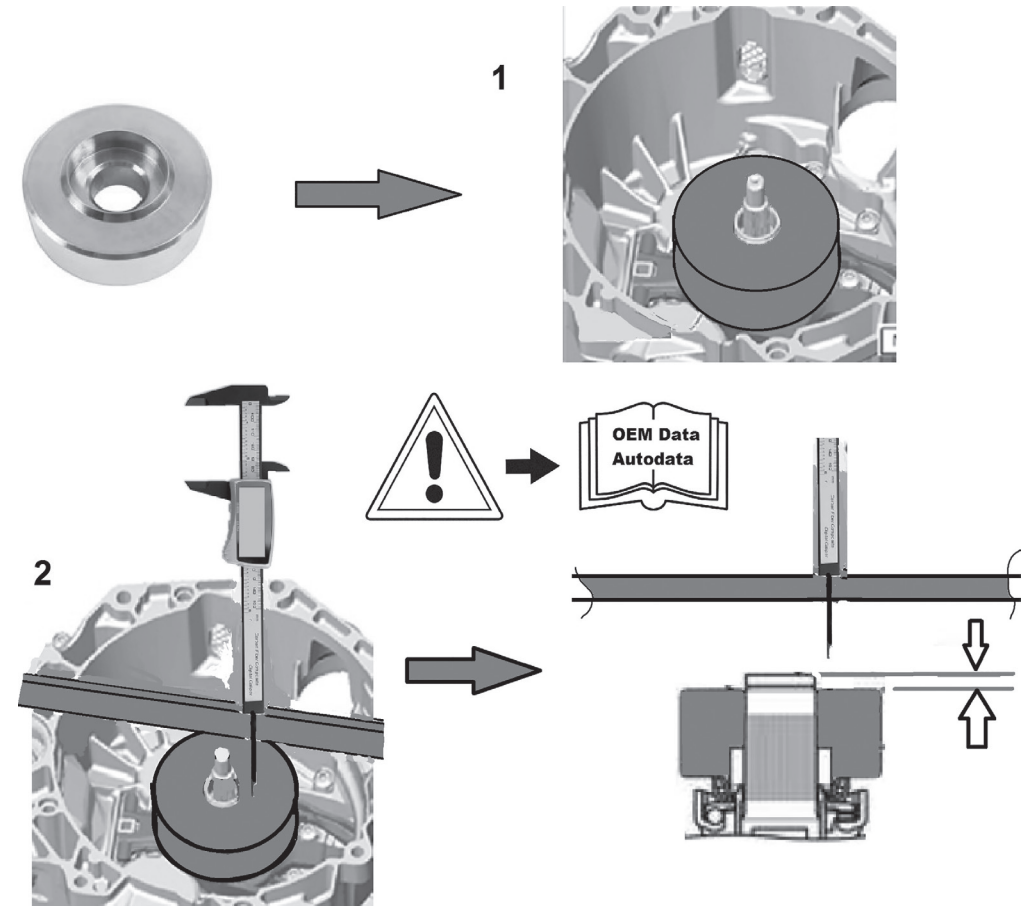


Due to the range of manufacturers and vehicles covered by this kit it is not possible to give detailed instructions for each vehicle application. Therefore we recommend the use of OEM derived information and instructions.

N.B: Remove the transmission from the vehicle as described by the vehicle manufacturer.

Basic Method of Use

1. Fit the tool as shown below
2. Refer to the Manufacturer's data for dimensions and full setting procedures



For clutch reassembly please refer to manufacturer instructions.