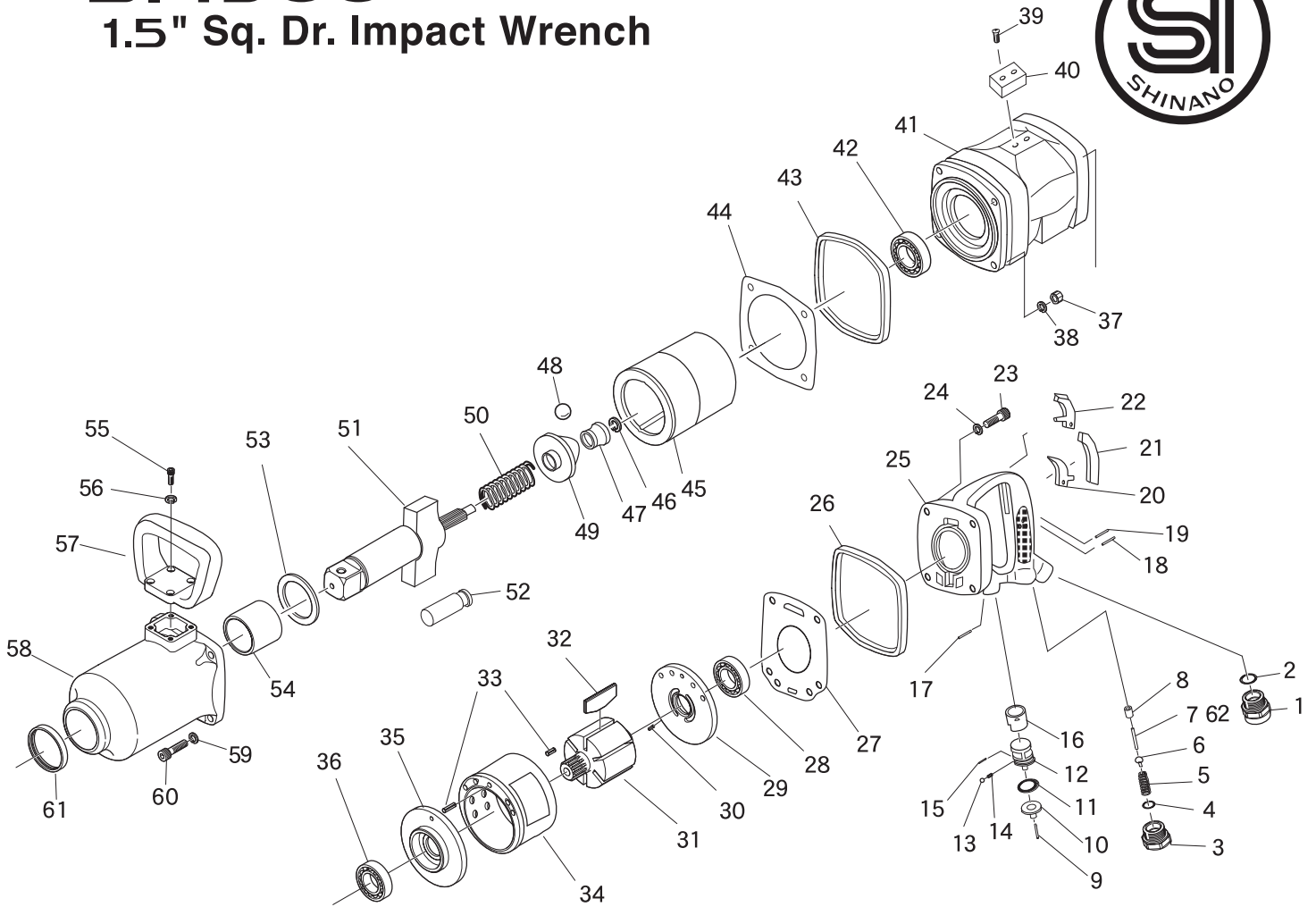


SI-1900

1.5" Sq. Dr. Impact Wrench



Ref. No.	Parts No.	Description	Q'ty	Ref. No.	Parts No.	Description	Q'ty
1	1901-46	Inlet Bushing	1	32	1903-30	Rotor Blade	6
2	P-20	O-Ring	1	33	40-20	Roll Pin	2
3	1902-48	Valve Plug	1	34	1903-31A	Cylinder Assembly (incl.40-20)	1
4	P-20	O-Ring	1	35	1903-28	Front Plate	1
5	1902-44	Valve Spring	1	36	1903-27	Ball Bearing	1
6	1901-43	Valve	1	37	N1-M80	Nut	4
7	1902-42	Valve Pin (for Outside Lever)	1	38	1900-23	Washer	4
8	1901-41	Valve Bushing	1	39	1903-80	Cap Screw	2
9	30-24	Roll Pin	1	40	1903-79	Exhaust Rubber	1
10	1903-58	Reverse Lever	1	41	1903-25A	Motor Housing	1
11	P-16	O-Ring	1	42	1903-38	Ball Bearing	1
12	1901-52A	Reverse Valve Assy (incl.30-8)	1	43	1903-17	Front Housing Band	1
13	SB-40	Steel Ball	1	44	1903-16	Gasket	1
14	1901-53	Spring	1	45	1903-11	Hammer Cage	1
15	30-8	Roll Pin	1	46	1903-9	Retainer Ring	1
16	1901-51	Reverse Valve Bushing	1	47	1903-15	Ball Guide	1
17	40-30	Roll Pin	1	48	1903-13	Steel Ball	1
18	1901-63B	Needle Pin	1	49	1903-14	Cam	1
19	40-26	Roll Pin	1	50	1903-10	Cam Spring	1
20	1901-60B	Inside Trigger	1	51	1903-8	Anvil	1
21	1901-61	Outside Plug	1	52	1903-12	Hammer Pin	2
22	1902-60	Out Side Trigger	1	53	1903-5	Thrust Washer	1
23	Z-M80-300	Cap Screw	4	54	1903-4	Anvil Bushing	1
24	1900-23	Washer	4	55	Z-M60-180	Cap Screw	4
25	1903-40A	Frame Handle Assembly (incl.1901-41,1901-51)	1	56	HSW-60	Washer	4
26	1903-37	Rear Housing Band	1	57	1903-18	Dead Handle	1
27	1902-36	Gasket	1	58	1903-3A	Hammer Case Assembly (incl.1903-4,1903-2)	1
28	6205	Ball Bearing	1	59	1900-23	Washer	4
29	1902-33A	Rear End Plate Assembly (incl.1902-34)	1	60	1903-22	Cap Screw	4
30	1902-34	Roll Pin	1	61	1903-2	Oil Seal	1
31	1903-29	Rotor	1	62	1902-42B	Valve Pin (for Inside Lever)	1