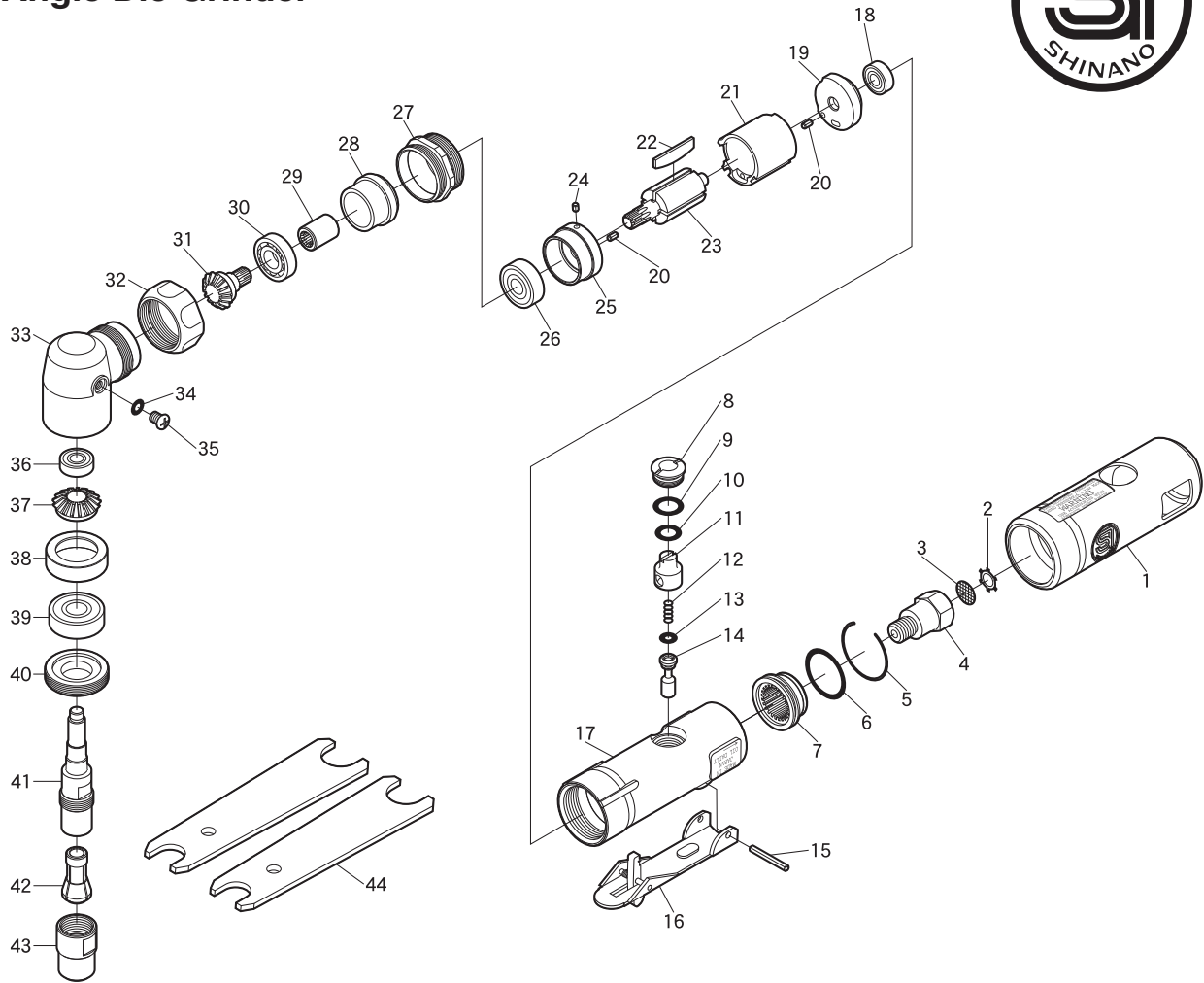


SI-2005HD

Angle Die Grinder



Ref. No.	Parts No.	Description	Q'ty	Ref. No.	Parts No.	Description	Q'ty
1	117-1	Housing Cover	1	25	114DA-11	Front Plate	1
2	CRTW-12	Retainer	1	26	608ZZ	Ball Bearing	1
3	680-28A	Screen	1	27	115-26	Motor Clamp Nut	1
4	610-2	Inlet Bushing	1	28	114DA-10	Collar	1
5	610-30	Retaining Ring	1	29	114DA-7	Coupling	1
6	620-28	O-Ring	1	30	EE3	Ball Bearing	1
7	610-29	Deflector	1	31	114H-3	Pinion Gear	1
8	330-10	Valve Screw	1	32	114-4	Angle Head Coupling Nut	1
9	P-10	O-Ring	1	33	114DA-3B	Angle Head	1
10	P-8	O-Ring	1	34	S-5	O-Ring	1
11	330-8A	Air Regulator	1	35	A-M50--60	Screw	1
12	350-7	Valve Spring	1	36	R4ZZ	Ball Bearing	1
13	P-4	O-Ring	1	37	114H-4	Bevel Gear	1
14	330-5	Valve Stem	1	38	114DA-9	Spacer	1
15	30-24	Roll Pin (3Ø-24 mm)	1	39	6000ZZ	Ball Bearing	1
16	350-2L	Throttle Lever	1	40	114DA-8	Spindle Nut	1
17	612-1	Motor Housing incl. Bush (330-4)	1	41	114-1	Spindle	1
18	696ZZ	Ball Bearing	1	42	330-24	1/4" Collet	1
19	610-12	Rear Plate	1	43	330-23	Collet Nut	1
20	25-5	Roll Pin(2.5Ø-5mm)	2	44	330-28	Spanner Wrench (11x17mm)	2
21	330-17	Cylinder	1	◆ 45	330-19	6 mm Collet	
22	330-16	Rotor Blade	4	◆ 46	330-25	1/8" Collet	
23	114DA-1	Rotor	1	◆ 47	330-26	3 mm Collet	
24	25-3.5	Roll Pin(2.5Ø-3.5mm)	1	◆ 48	MC08D-6	Tungsten Carbide Rotary Burr-6mm Shank Ball Nosed Cylinder-	