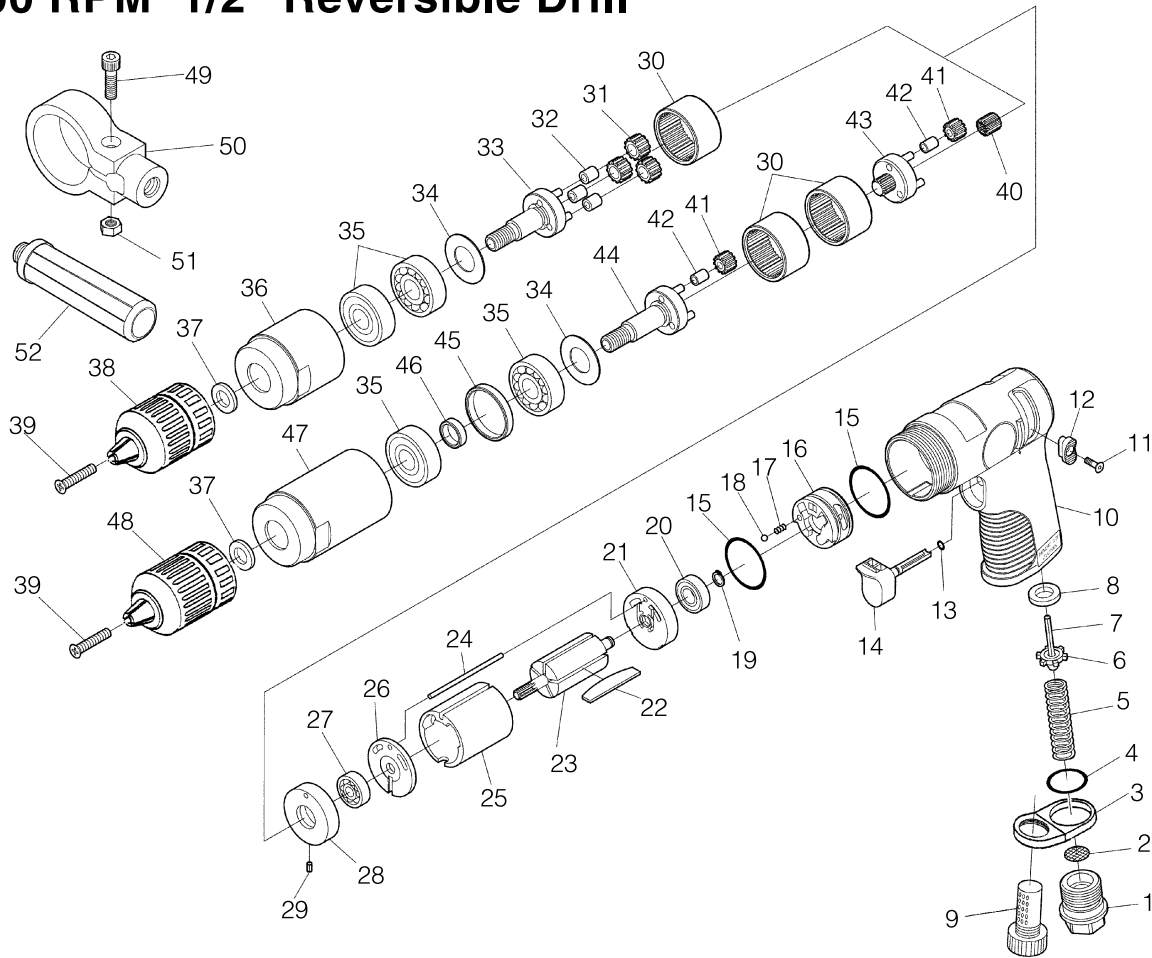


# SI-5405

## 1500 RPM 3/8" Reversible Drill

# SI-5405-6

## 600 RPM 1/2" Reversible Drill



Ref. No.	Parts No.	Description	Q'ty	Ref. No.	Parts No.	Description	Q'ty
1	991-5	Inlet Bushing	1	28	215RA-4	Spacer	1
2	1071C-21	Screen	1	29	25-5	Roll Pin(2.5φ-5mm)	1
3	911A-15	Muffler Retainer	1	30	217-10	Internal Gear	1(2)
4	991-7	O-Ring	1	☆31	217-12	Planet Gear incl. Bush (217-33)	3
5	991-8	Valve Spring	1	☆32	217-33	Bush	3
6	960-35	Valve	1	☆33	215-40	Work Spindle incl. Pins (300-21×3)	1
7	30-32	Roll Pin(3φ-32mm)	1	34	957-35	Washer	1
8	960-34	Valve Seat	1	35	6201-Z	Ball Bearing	2
9	215RA-9	Muffler	1	☆36	215-41	Clamp Nut	1
10	215RA-7	Motor Housing incl. Motor Insert (215RA-5)	1	37	680-7	Spacer	1
11	EZM30-100	Screw	2	☆38	LX10	3/8"Cap. Keyless Chuck (3/8"Thd)	1
12	210R-4	Reverse Lever	2	39	215-1	Chuck Screw	1
13	215RA-8	O-Ring	1	★40	217-8-4	Pinion Gear	1
14	215RA-3	Trigger	1	★41	217-8-2	Planet Gear incl. Bush(217-8-3)	6
15	1091C-20	O-Ring	2	★42	217-8-3	Bush	6
16	215RA-1	Reverse Valve	1	★43	217-8-5	Reduction Spindle incl. Pinion & Pins (217-8-6,300-21×3)	1
17	960-50	Spring	1	★44	215-8-1	Work Spindle incl.Pins (300-21×3)	1
18	SB-1/8	Steel Ball	1	★45	215-8-2	Outer Collar	1
19	JS-6	Retaining Ring	1	★46	215-8-3	Inner Collar	1
20	696-ZZ	Ball Bearing	1	★47	215-8-5	Clamp Nut	1
21	215RA-2	Rear Plate	1	★48	LM13W	1/2"Cap. Keyless Chuck (3/8"Thd)	1
22	350-16	Rotor Blade	5	★49	Z-M60-200	Cap Screw	1
23	217-17	Rotor	1	★50	210-5-1	Clamp Ring	1
24	200-34	Cylinder Pin	1	★51	N1-M60	Nut	1
25	217-15	Cylinder	1	★52	240-50	Handle	
26	217-14	End Plate	1				
27	626	Ball Bearing	1				