

GREAT OFFERS AND BIG SAVINGS

TOOLHITS

Measuring tools, workshop tools and
misc. equipment for the
industrial market

MAGNETIC STAND

Mechanical magnetic measuring stand with central locking mechanism. Mounting for clamping shank Ø6 mm, Ø8 mm and dovetail, fine adjustment at the indicator holder.



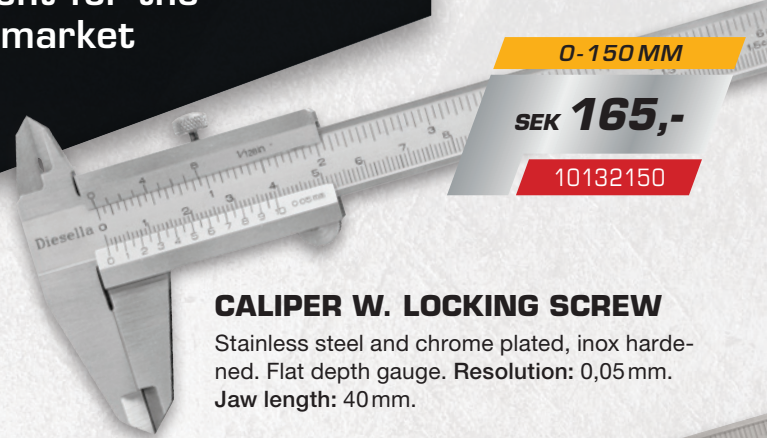
SEK **465,-**

10384225

SEK **760,-**

10384240

Item no.	Base LxBxH	Arm length	Clamp. force
10384225	60x50x55 mm	290 mm	80 kg
10384240	73x50x55 mm	380 mm	100 kg



0-150 MM

SEK **165,-**

10132150

CALIPER W. LOCKING SCREW

Stainless steel and chrome plated, inox hardened. Flat depth gauge. Resolution: 0,05 mm. Jaw length: 40 mm.



0-300 MM

SEK **540,-**

10134300

CALIPER W. LOCKING SCREW

Stainless steel and chrome plated, inox hardened. Flat depth gauge. Resolution: 0,05. Jaw length: 55 mm.

DIGITAL HEIGHT GAUGE

Digital height and marking gauge with fine adjustment and LCD display. Sturdy stand with ground base. Carbide tipped scriber. Reading: 0,01 mm.



300 MM

SEK **1.870,-**

10326300

500 MM

SEK **2.475,-**

10326500



FROM
SEK **43,-**

10313710

MEASURING TAPE CLASS 2

Prof. measuring tape with auto-lock and nylon-coated tape. Black mm-scale and red numbers for every 10 cm.

ABS plastic mount included.

Item no.	Width	Length	Price SEK
10313710	16 mm	3,0 m	43,-
10313720	19 mm	5,0 m	66,-
10313730	25 mm	7,5 m	97,-



LOOP / with straps

SEK **2.635,-**

70070143

POCKET / with pockets

SEK **2.635,-**

70070130

SOLAIRE ROLL BAG

Synthetic black leather with 15 pockets.
Dimensions: 680x320mm. Weight: 0,34 kg.
Tools not included.



SEK **124,-**

70265165

TOOLCASE GO LOOP/POCKET

Practical and professional toolcase with TROLLEY that covers most needs.

Dimension: 485x375x200 mm.
Volume: 36L. Tools not included.



TECHNICIANS NOTEBOOK TOOL BAG

Padded room for laptop and waterproof bottom.

Inner dimensions:
440x320x180 mm.

Outer dimensions:
450x340x200 mm.

Weight: 2,7 kg.
Max. load: 12 kg.

Tools not included.



SEK **795,-**

70215165

BLACK OUTDOOR CASE WITH FOAM

Very durable case, tested under extreme conditions. It can withstand temperatures from -40° C to + 80° C. The case is 100% waterproof (tested to a depth of 5 m), dust-proof, airtight (with pressure relief valve) and is resistant to chemicals and corrosion. Extremely impact resistant. Black color and with foam inserts.

Item no.	Size mm	Volume	Price SEK
70515005	228 x 182 x 92	2L	360,-
70515205	247 x 175 x 153,5	6,6L	680,-
70515405	384 x 264 x 164	16,6L	1.180,-
70515615	475 x 350 x 130	21,5L	2.250,-
70515675	535 x 360 x 225	42,8L	3.130,-
70515685	585 x 410 x 295	70,9L	4.510,-



SEK **525,-**

15305105

AUTO REFRACTOMETER WITH ADBLUE

With the Auto Refractometer you can easily check the freezing point in your antifreeze, windscreen wash and battery fluid (measure propylene, glycol and ethylene + checking of electrolytic batteries). Build-in automatic temperature compensation (ATC).

Plastic box with instruction manual, calibration tool and pipette included.

WRKPRO WORK LIGHT SLIM X8

Compact work lamp with powerful COB LED with 2 brightnesses. Foldable base with powerful magnet that can be rotated 180°. Built-in hook function that can be rotated 360° horizontally. Rechargeable Li-Ion battery.

SEK **370,-**

50616150



WRKPRO WORK LIGHT SLIM X5

Compact work lamp with powerful COB LED with 2 brightnesses and SMD LED top light as lamp function. Flexible gooseneck light head that can be rotated / bent 360° horizontally and vertically. Rechargeable Li-Ion battery. Strong magnet at the bottom incl. hook function.

SEK **525,-**

50616120



WRKPRO WORK LIGHT H5

Powerful work lamp with powerful COB LED with 2 brightness and lamp function (top light). Extendable and tiltable base with powerful magnet that can be rotated 360°. Built-in hook function that can be rotated 360° horizontally. Rechargeable Li-Ion battery.

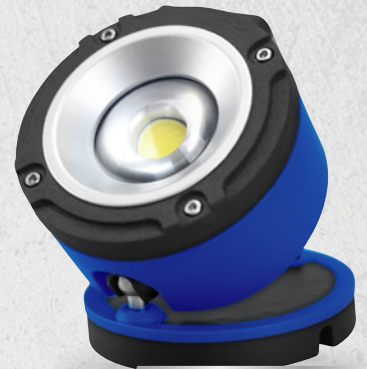


SEK **500,-**

50617260

WRKPRO WORK LIGHT M3

IP65 work lamp with powerful magnetic base and tiltable COB LED light source which makes it extremely easy to adapt the light to the task. Built-in hook function for hanging on various surfaces or wires. Rechargeable Li-Ion battery.



SEK **347,-**

50618420



WRKPRO WORK LIGHT SLIM X1

IP54 Mini lamp with very powerful OSRAM LED. Rechargeable Li-Ion battery, hook and clip function and magnetic base.

SEK **208,-**

50616050





VULCAN PROF. VATERPAS

- 3 solid acrylic vials
- Magnified horizontal vial
- Plumb Site® Dual-View™
- Shock absorbing rubber
- VPA certified
- V-groove for pipe/conduit
- Milled surface up to 120 cm
- Wall thickness: 2,0 mm
- Ergonomic grib
- Accuracy: 0.5 mm/m

Item no.	Model	Length	Price SEK
10461720	Standard	60 cm	255,-
10461730	Standard	80 cm	295,-
10461740	Standard	100 cm	325,-
10461750	Standard	120 cm	380,-
10461820	Standard	60 cm	355,-
10461830	Magnetisk	80 cm	410,-
10461850	Magnetisk	120 cm	470,-



CONDOR PROF. VATERPAS

- 2 solid acrylic vials
- OPTIVISION™ technology
- Plumb Site® Dual-View™
- Shock absorbing rubber
- Gradient lines 1% & 2%
- Wall grip feature
- Milled surface up to 120 cm
- Wall thickness: 1,6 mm
- VPA certified
- Accuracy: 0.5 mm/m

Item no.	Model	Length	Price SEK
10462105	Standard	60 cm	247,-
10462115	Standard	80 cm	285,-
10462125	Standard	100 cm	350,-
10462135	Standard	120 cm	385,-
10462145	Standard	180 cm	535,-



CHALK LINE SET

Plumb bob design with 113g. Blue chalk bottle included. 30 m line. 85g capacity.

SEK 108,-

10465310



SEK 65,-

10464055



POSTRITE PLASTIC POST LEVEL

With 3 easy-to-read vials, 4 strong magnets and elastic band. Perfect for leveling posts, pipes and signs. Compact size allows for storage within your tool box.

OPTIVISION® RED TECHNOLOGY

Creates highly visible red bubble edges, for exact placement between the reading lines and optimal vision in bright and low light. Increases vial visibility up to 8 times.



PLUMB SITE® DUAL-VIEW™

Plumb Site® Dual-View™ technology allows you to read the vial from the front end and helps prevent neck and back strain. Unique front view of the vertical vial through a 1-to-1 reflection of the vial



SEK 172,-

10464010



SMARTY TOOLBOX LEVEL

The perfect choice for the toolbox - with OPTIVISION™ technology, magnets and clip belt housing. Gradient lines 1% and 2%. Accuracy: 0,5 mm/m.



SEK **403,-**

35170210

CURV-O-MARK CONTOUR CENTER HEAD

Standard: The centering head aids in the setting of centre lines, establishing angles and marks, for butt-ins, locating points inside pipes and tanks, laying out keyways and measuring declivity. The standard model is used on pipe ½" diameter and larger and is fitted with an adjustable dial set level and a manually operated hardened centering pin.

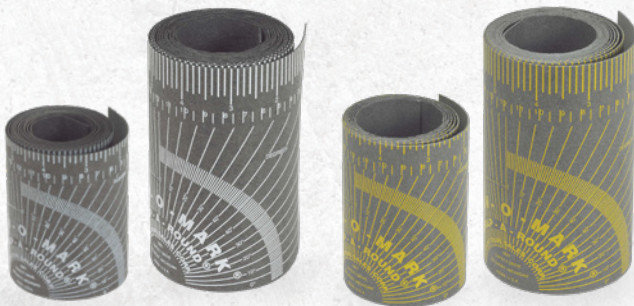


SEK **485,-**

35170225

CONTOUR CENTER HEAD

Jumbo: This model is used on pipe 1" diameter and larger and is fitted with an adjustable dial set level and a spring-loaded hardened centering pin which eliminates the need for a hammer. Just make the alignment and press the trigger.



CURV-O-MARK WRAP-A-ROUND

An inexpensive tool for marking straight lines around pipe, or for use as a straight edge. Made out of flexible gasket material, with good resistance to heat and cold. All Wrap-A-Rounds are available in two colors. These designate material type and service temperature.

– **B** (black) material has a service temperature up to 175°C
 – **GG** (grey) material is used for high temperature applications up to 280°C

Both material types are asbestos free. All sizes are printed with a inch and metric scale, pitch chart, tangent chart and other useful markings.



WELDING BLANKET 550°C, 750°C OG 1100°C

550°C: Light-duty uncoated glassfiber. Light brown.
750°C: Medium-/heavy-duty vermiculate coating glassfiber. Black.
100°C: Heavy-duty High Silica fiberglass. Tan.

Item no.	Model	Size	Price SEK
35170610	164B / Black	M / Ø3-6"	170,-
35170620	176B / Black	L / Ø3-10"	178,-
35170630	177B / Black	XL / Ø4-12"	225,-
35170640	179B / Black	XXL / Ø6-16"	255,-
35170710	164GG / Grey	M / Ø3-6"	208,-
35170720	176GG / Grey	L / Ø3-10"	255,-
35170730	177GG / Grey	XL / Ø4-12"	310,-
35170740	179GG / Grey	XXL / Ø6-16"	385,-

Item no.	Max. temp.	Size	Price SEK
35205110	550°C	1 × 2 M	240,-
35205115	550°C	2 × 2 M	450,-
35205120	550°C	2 × 3 M	650,-
35205125	550°C	1 × 25 M in roll	1.970,-
35210110	750°C	1 × 2 M	610,-
35210115	750°C	2 × 2 M	1.150,-
35210120	750°C	2 × 3 M	1.725,-
35210125	750°C	1 × 25 M in roll	4.320,-
35215110	1100°C	0,92 × 2 M	795,-
35215115	1100°C	1,8 × 2 M	1.525,-
35215120	1100°C	1,8 × 3 M	2.225,-
35215125	1100°C	0,92 × 25 M in roll	6.725,-

WORKPIECE STOP EASYMAG

with Ø30 mm magnetic base.
Holding force: 200N.



SEK **640,-**

50387110

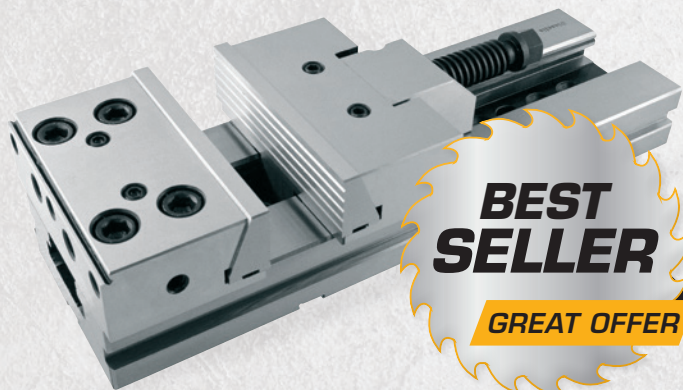
WORKPIECE STOP FLEXIMAG

with Ø30 mm magnetic base.
Holding force: 200N.



SEK **1.185,-**

50387120



PRECISION MACHINE VICE

Precision vice for CNC and other machines. Incl. accessories.
Produced of high alloy quality steel (20Cr.Mn.Ti).
Surface hardness: 58-68 HRC.

Item no.	Jaw W×H	Max. opening	Price SEK
40335150	125 x 40 mm	150 mm	5.485,-
40335175	150 x 50 mm	200 mm	5.915,-
40335200	150 x 50 mm	300 mm	6.805,-
40335250	175 x 60 mm	300 mm	9.455,-
40335275	175 x 60 mm	400 mm	10.110,-
40335350	200 x 65 mm	300 mm	12.235,-
40335375	200 x 65 mm	400 mm	14.055,-
40335400	200 x 65 mm	500 mm	16.375,-
40335425	200 x 65 mm	600 mm	18.640,-



5 MM

10 MM

SEK **1.625,-**

50352005

SEK **1.820,-**

50352010

PARALLEL GAUGES IN SET 14 PAIRS

Grounded, hardness 55-60 HRC. Accuracy: Height tolerance ± 0.01 mm, width tolerance ± 0.02 mm. For parallel mounting of components in machine vices or jigs. Length: 150 mm.

REVOLVING TAILSTOCK CENTER

Ground and hardend body.
Tip angle: 60°. Accuracy: 0,006 mm.



Item no.	MK	Max. weight	Max. RPM	Price SEK
50301520	2	400 kg	2.800	410,-
50301530	3	800 kg	2.000	520,-
50301540	4	1.250 kg	1.800	565,-
50301550	5	1.500 kg	1.300	860,-
50302620	2	140 kg	5000	770,-
50302630	3	400 kg	3000	905,-
50302640	4	500 kg	2800	1.070,-
50302650	5	1200 kg	1200	1.785,-



TAPPING CHUCK

Diesella reversible tapping chuck with overload-pin, adjustable torque and double speed at reversing. Incl. taper shank and 2 pcs. collet chucks.

Item no.	Thread	Price SEK
50445107	M2-M7 m. MK1 + MK3 (J6) (JSN07)	3.025,-
50445212	M5-M12 m. MK3 + MK4 (J6)	3.295,-
50445320	M8-M20 m. MK3 + MK4 (M20x2,5) (JSN20)	3.730,-

HOLE SAW HSS M42 BI-METAL

Combitand 4/6. The strong construction makes this cavity suitable for cuts in alloyed and non-alloy steel, aluminum, cast iron, stainless steel, copper, bronze, wood and plastic. Contains 8% cobalt.



Item no.	ø mm	Price SEK	Item no.	ø mm	Price SEK
60266016	16	30,-	60266051	51	68,-
60266019	19	33,-	60266057	57	74,-
60266020	20	33,-	60266060	60	80,-
60266022	22	37,-	60266064	64	82,-
60266025	25	39,-	60266070	70	93,-
60266027	27	44,-	60266076	76	101,-
60266029	29	46,-	60266083	83	110,-
60266032	32	47,-	60266089	89	120,-
60266035	35	50,-	60266102	102	138,-
60266038	38	54,-	60266105	105	142,-
60266041	41	57,-	60266114	114	158,-
60266044	44	60,-	60266160	160	216,-
60266048	48	64,-	60266168	168	235,-

OTHER DIMENSIONS AVAILABLE ON STOCK

HOLE SAW KIT HSS M42 BIMETAL

9 pcs. in case. Cut-diameter: Ø44 - 76 mm. Contains 8% cobalt.

SEK 550,-

60266310



SEK 650,-

60266300



HOLE SAW KIT HSS M42 BIMETAL

13 pcs. in case. Cut-diameter: Ø22 - 79 mm. Contains 8% cobalt.



SEK 895,-

60705305

TAP AND DIE SET HSS METRIC M3-M12

Tap and Die set with 32 parts.

COUNTERSINK HSS-TIN

DIN335, 90°, form C, cylindrical shank.



Item no.	Head	Tap	Shank	Length	Price SEK
60016063	6,3 mm	1,5 mm	5 mm	45 mm	70,-
60016083	8,3 mm	2,0 mm	6 mm	50 mm	80,-
60016104	10,4 mm	2,5 mm	6 mm	50 mm	83,-
60016124	12,4 mm	2,8 mm	8 mm	56 mm	97,-
60016165	16,5 mm	3,2 mm	10 mm	60 mm	121,-
60016205	20,5 mm	3,3 mm	10 mm	63 mm	165,-
60016250	25,0 mm	3,8 mm	10 mm	67 mm	232,-
60016310	31,0 mm	4,2 mm	12 mm	71 mm	350,-

TWIST DRILLS HSS-CO 1-13 MM X 0,5 MM

DIN338 – Set with 25 pcs. grinded drills (0,5 mm intervals).

SEK 600,-

60227130



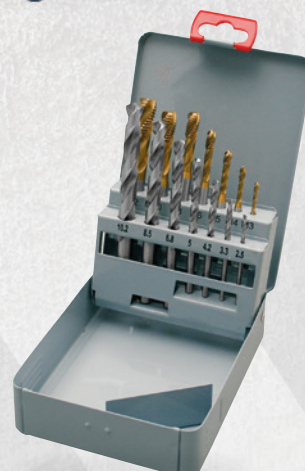
SPIRALTAPPE 45° HSS-TIN MED BOR

14 pcs in case. Steel cassette included. 7 pcs drills: Ø2,5 - 3,3 - 4,2 - 5,0 - 6,8 - 8,5 - 10,2 mm.

7 machine taps: M3 - M4 - M5 - M6 - M8 - M10 - M12.

SEK 590,-

60207425





SEK 158,-

FREE CHOICE

- Black × 10 pcs.
ART. 20147250
- Blue × 10 pcs.
ART. 20147240
- Green × 10 pcs.
ART. 20147260
- Red × 10 pcs.
ART. 20147230

PERMANENT MARKERS 10 PCS.

For permanent marking and writing on almost any material, for example plastic, carton, metal, glass, rubber, wood. Fadeless and quick drying. Low smell ink without Xylene / Toluene.

EURO TYPE FOUNT SET WITH NUMBERS, LETTERS AND HANDLE

Contains 100 characters with mix of numbers, letters, punctuation marks and blank spacers.

- 2 mm: ART. 20138520
- 3 mm: ART. 20138530
- 4 mm: ART. 20138540
- 5 mm: ART. 20138550



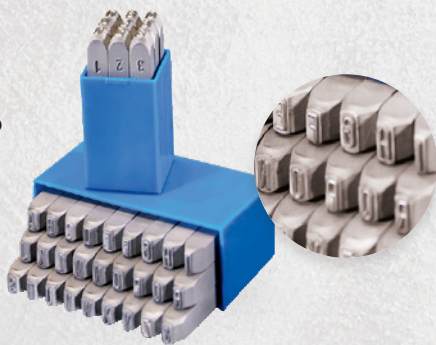
SEK 3.925,-

FREE CHOICE

STANDARD

Tensile strength up to 800N/mm².

Sharp engraving.



Item no.	Size	Embossing	Price SEK
20134130	4 mm	Numbers (0-9)	85,-
20134135	5 mm	Numbers (0-9)	93,-
20134140	6 mm	Numbers (0-9)	100,-
20134150	8 mm	Numbers (0-9)	139,-
20134160	10 mm	Numbers (0-9)	185,-
20134230	4 mm	Letters (A-Z + &)	247,-
20134235	5 mm	Letters (A-Z + &)	270,-
20134240	6 mm	Letters (A-Z + &)	300,-
20134250	8 mm	Letters (A-Z + &)	416,-
20134260	10 mm	Letters (A-Z + &)	550,-



SEK 50,-

FREE CHOICE

- Red × 12 pcs.
ART. 20149130
- Blue × 12 pcs.
ART. 20149140
- Black × 12 pcs.
ART. 20149150
- Yellow × 12 pcs.
ART. 20149160
- White × 12 pcs.
ART. 20149170
- Green × 12 pcs.
ART. 20149180

MARKING CRAYON 12 PCS.

For marking on dry and wet wood, paper, carton, metal, stone, concrete, tiles, plastic, diameter 12 mm, Wiping proof and weather resistant, without label. Length 120 mm. Diameter 12 mm



SEK 735,-

20138025

SAFETY PUNCH GRIP IN METAL HEAVY DUTY!

With spring locking.

STANDARD EXTRA

Tensile strength up to 1200N/mm².

Sharp engraving.



Item no.	Size	Embossing	Price SEK
20134315	4 mm	Numbers (0-9)	185,-
20134320	5 mm	Numbers (0-9)	200,-
20134325	6 mm	Numbers (0-9)	248,-
20134335	8 mm	Numbers (0-9)	331,-
20134340	10 mm	Numbers (0-9)	408,-
20134415	4 mm	Letters (A-Z + &)	550,-
20134420	5 mm	Letters (A-Z + &)	585,-
20134425	6 mm	Letters (A-Z + &)	750,-
20134435	8 mm	Letters (A-Z + &)	970,-
20134440	10 mm	Letters (A-Z + &)	1.220,-

LASER DISTANCE METER

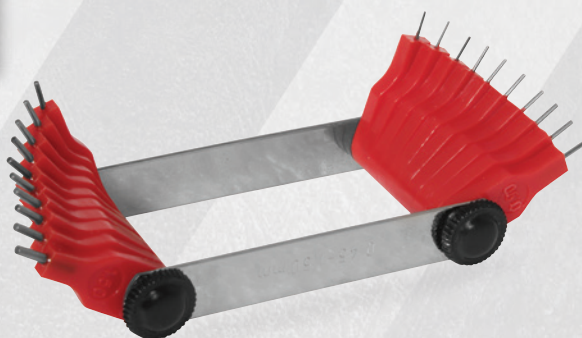
Smart and simple laser distance meter with LCD display and many features for various types of measurements. Can store up to 100 measurements.

Max. range: 60 m.
Accuracy: ± 2,0 mm.
Light in display: Yes.
IP class: IP54.
Pouch: Yes.
Battery: 2× AAA.
Operating temp.: 0°-50° C.
Storage temp.: -20°-70° C.
Laser class: 620-680 mm (class 2).



SEK 850,-

10460060



PRECISION JET GAUGE

Used to determine the size of a hole or nozzle.

Item no.	Blades	Measuring range	Price SEK
10593100	20 pcs.	0,45 - 1,50 mm	79,-
10593200	16 pcs.	1,50 - 3,00 mm	79,-



KNIFE W. AUTO LOCK & BLADE STORAGE 18 MM.

Rubber handle for maximum grip, blade storage for extra knife blades.
Blades: 18 × 100 × 0,5 mm.

SEK 27,-

20615110



KNIFE IN ZINC-ALLOY HOUSING W. AUTO LOCK 18 MM.

Rubber handle for maximum grip, blade storage for extra knife blades.
Blades: 18 × 100 × 0,5 mm.

SEK 69,-

20615407

MAGNETIC CHIP COLLECTORS W. QUICK RELEASE 3 MODELS

Quick and safe pick up of iron and steel of-cuts, chips, swarf and small components. No re-magnetization needed.



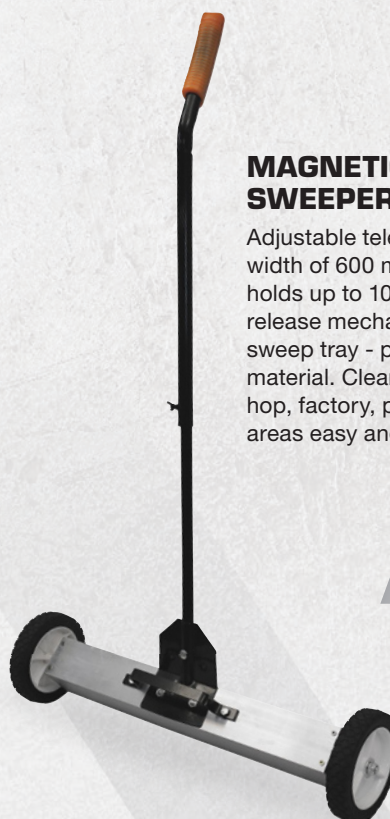
ART. 30185210

MAGNETIC FLOOR SWEEPER 600 MM

Adjustable telescopic handle with tray width of 600 mm, height up to 860 mm, holds up to 10 kg of material. Quick release mechanism mounted on the sweep tray - pull the handle and release material. Cleans the floor of the workshop, factory, parking lot and similar areas easy and quickly.

SEK 762,-

30185435



ART. 30185200

Item no.	Length	Lifting cap.	Price SEK
30185150	400 mm	6 kg	386,-
30185200	240 mm (Ø125 mm)	15,5 kg	193,-
30185210	685 mm (Ø90 mm)	13,5 kg	193,-

KEY-BAK CHUCK KEY RETRATOR

Attachment: Bracket mounting.
Cord material: Stainless steel.
Cord length: 600 mm.



SEK 180,-

20180175

KEY-BAK KEY REEL

KEY-BAK model 488B-HDK with carabiner and 1,2 m kevlar cord. Holds up to 15 keys.



SEK 186,-

20180145



SEK 200,-

20180095

KEY-BAK KEY REEL S48K

With belt clips, kevlar cord and right/left side opening. Holds up to 15 keys. Cord length: 120 cm. Withdrawal force: 225g. Weight: 97g.



SEK 180,-

20327220

KEY TAGS IN PLASTIC 100 PCS. ASS.

S-type key tag.

BRASS/STAINLESS STEEL TAG

Brass
Ø27 × 0,8 mm m.
Ø4 mm hole. 100 pcs.

Stainless steel
Ø32 × 1,2 mm m.
Ø4 mm hole. 50 pcs.

100 PCS.

SEK 386,-

20327015

50 PCS.

SEK 265,-

20327045



SEK 1.425,-

18560110

PARCEL SCALE 120 KG X 20 G

Very compact and durable scale which is optimal for many industrial applications. Steel pan 305 x 305 mm and LCD display in plastic housing with 2 meter cable for flexible placement of the display. Capacity: 120kg. Minimumvægt: 400g.

KEY RINGS SIZE 20-38 MM



Item no.	Outer dia.	Inner dia.	Type	Packing	Price SEK
20326046	24 mm	22 mm	Nickel	100 pcs.	108,-
20326054	26 mm	23 mm	Nickel	100 pcs.	100,-
20326062	30 mm	27 mm	Nickel	50 pcs.	79,-
20326070	35 mm	31 mm	Nickel	50 pcs.	108,-
20326078	38 mm	34 mm	Nickel	50 pcs.	115,-
20326140	20 mm	17 mm	Stainless	100 pcs.	186,-
20326148	25 mm	21 mm	Stainless	100 pcs.	236,-
20326156	30 mm	26 mm	Stainless	50 pcs.	186,-



SEK **147,-**

20118245

TELESCOPIC MAGNET WITH LED LIGHT AND POCKET CLIP

Powerful telescopic magnet with bright LED light, convenient for collection of magnetic objects such as bolts, nuts and more.



SEK **240,-**

15040425

TELESCOPIC INSPECTION MIRROR Ø30 MM WITH LED LIGHT

Very robust and powerful LED light source, flexible double-sided mirror that can be rotated in all directions. Pocket clip for quick and easy storage in shirt or trousers. A must-have for quick inspections. Telescopic length: 665 mm.

HANDHELD MAGNIFIER 10X

With glass lens and LED light which eliminate the problem of shadow effect during use.

Battery: 2xAA 1,5 V
- not included.

Magnification: 10x
Lens dia.: Ø26 mm
Material: Glass/ ABS plastic
Size: 38 x 105 x 25 mm



SEK **207,-**

15405010

PRECISION SCALE LOUP

7x magnification. Lens size Ø25 mm. 1 scale included.



SEK **475,-**

15405207



MAGNIFYING LAMP 19X16 CM LENS

Magnifying lamp with 19x16 cm lens, 10W. **Light source:** 60xSMD LED. ON/OFF button on the head. Integrated dust cap. Available with 3D dioptri (= 1,75X magnification) and 5D dioptri (= 2,25X magnification). **Power supply:** 220V~ 240V. **Cord:** 1,5m with plug. **Color:** White. **Height:** 80cm. **Weight:** 3,9 kg. 950 Lm. CE certified.

Mounting clamp included.

3D

SEK **1.060,-**

15406195

5D

SEK **1.145,-**

15406200

HANDHELD MAGNIFIER 3X/5X/7X WITH LED LIGHT

3X (50x50 mm).
5X + 7X (20x25 mm).
Glasslens, ABS plastic housing.
Size: 117 x 61 x 9 mm.
Uses 2x CR2032 batteries.



SEK **86,-**

15405007

HEAD MAGNIFIER WITH LED LIGHT

With 5 exchangeable lenses. The LED light unit can be easily removed and used as table lighting. Strong headband with a strong tightening screw.

Strong storage box for lenses included (1.0X, 1.5X, 2.0X, 2.5X, 3.0X, 3.5X).



SEK **260,-**

15405335

OUTLET

Big savings on quality tools
Only valid while stock lasts!

TABLE MAGNIFIER

Made in ABS plastic with quality glass lens. Very easy to use. An ideal product for those with impaired vision or to assist in reading labels, books, drawings, etc..

Magnification: 3,5X
Size: Ø92 × 45 mm
Lens. dia.: 70 mm
Material: ABS plastic (soft)
Battery: 2× CR2016



SEK **100,-**

15405185



IP54 DIGITAL CALIPER

DIN862. Manuel ON/OFF after 5 min., zero setting, switch mm/inches. ABS-function.

0-150 MM

SEK **355,-**

10218710

0-200 MM

SEK **465,-**

10218725

0-300 MM

SEK **620,-**

10218740

10 PCS.



SEK **240,-**

10313930

WOODEN FOLDING RULER 2M

Size: 2M with 10 joints (3,2×16 mm).
Material: Beech wood.
Joints: Steel, hidden rivets and hardened spring.
Scale: Duplex metric.

SCREW SUPPORTER WITH MAGNET

High quality screw supporter with adjustable height for support of work pieces. The built-in magnet ensures optimum retention and allows fastening/supporting in both horizontal and vertical direction.



Item no.	Height mm	ØD mm	ØF mm	Price SEK
50338235	40 - 50	45	35	310,-
50338240	50 - 65	45	35	325,-
50338245	65 - 85	45	35	400,-
50338250	85 - 110	45	40	440,-
50338255	110 - 165	50	45	525,-
50338260	165 - 265	60	50	700,-



CARBIDE BURR SINGLECUT

For use in material which produces long chips. Suitable for: Cast iron, cast steel, Bronze, Hardened Aluminium alloys, Titanium alloys and stainless steel. Suitable for processing of slot and right angled corners. Shank: 6 mm.

Form	B	C	D	E	F	G	M	Price SEK
Ø6 mm	60187010	60188010	60189010	60190010	60191010	60192010	60193025	72,-
Ø8 mm	-	60188025	60189025	60190025	60191025	60192025	-	79,-
Ø10 mm	60187025	60188040	60189040	60190040	60191040	60192040	60193040	86,-
Ø12 mm	60187040	60188055	60189055	60190055	60191055	60192055	60193055	98,-
Length	56-70 mm	56-70 mm	52-56 mm	56-65 mm	56-70 mm	56-70 mm	53-70 mm	

OUTLET products only valid while stock lasts

All prices are net. prices ex. VAT and are valid from 01.02.20 to 30.04.20. Subject to sold goods and printing errors.