

JUST SCAN IT

Aoralscan 3
An Intra Oral Scanner.



Technical Specifications

Aoralscan 3

Scan Field	Standard tip: 16 x 12 x 22 mm Small tip: 12 x 9 x 22 mm
Scan Principle	Non-contact with structured light
Dimension (L x W x H)	281 x 33 x 46 mm
Weight	240 ± 10 g (Without Cables)
Output	STL, OBJ, PLY
Connector	USB 3.0
Power Input	12V DC/3A

Recommended PC Configuration

Aoralscan 3

CPU	Intel Core i7-8700 or higher
RAM	16 Gigabytes (GB) or more
Hard Drive	256 Gigabytes (GB) SSD or more
GPU (Graphic Card)	NVIDIA® RTX 2060 6GB or better
Operating System	Windows 10 Professional (64-bit) or later versions of Windows operating system
Screen Resolution	1920 x 1080, 60Hz or more
I/O Ports	More than 2 type-A USB 3.0 (Or higher) ports

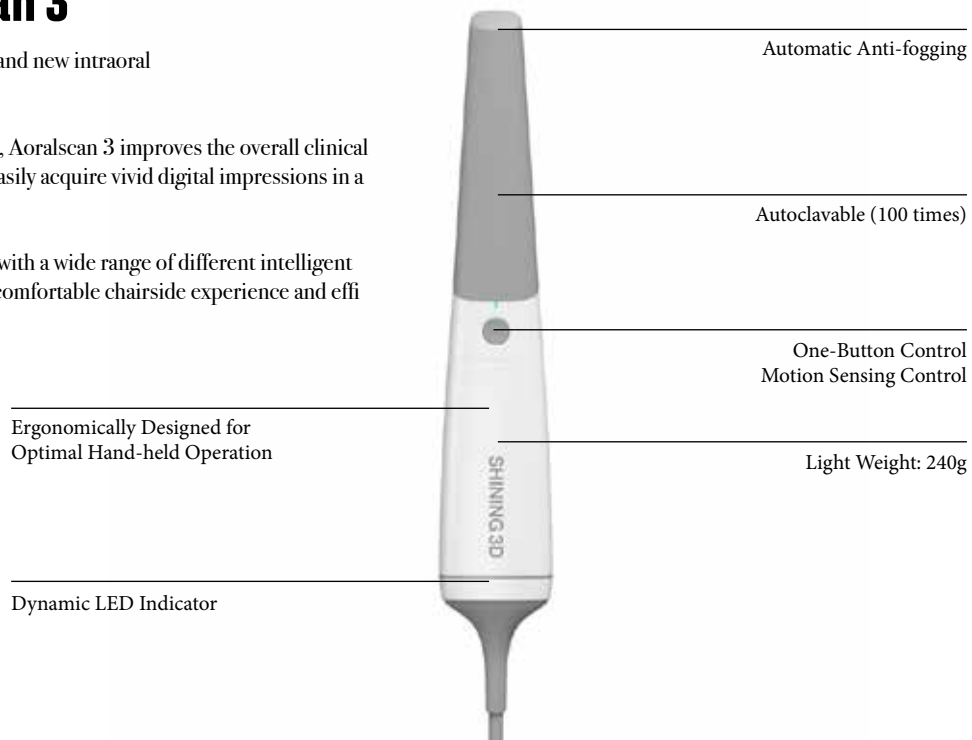


Meet Aoralscan 3

Say hello to SHINING 3D's brand new intraoral scanner, Aoralscan 3!

Exceptional, smart and elegant, Aoralscan 3 improves the overall clinical experience. It allows users to easily acquire vivid digital impressions in a faster and more accurate way.

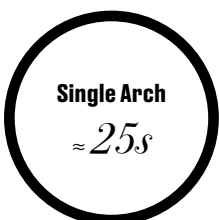
Moreover, AoralScan 3 comes with a wide range of different intelligent functions, guaranteeing more comfortable chairside experience and efficient clinic-lab collaboration.



Capture Digital Impressions in Real Time

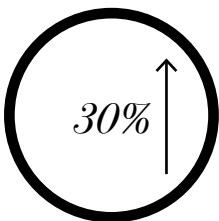
Fast, Accurate and Exceptional Scan Performance

The constant optimization and innovation of SHINING 3D's hardware and software system, led to the release of its latest and finest intraoral scanner, Aoralscan 3.



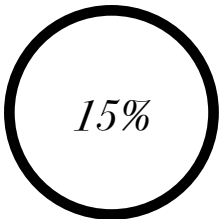
FASTER SCAN

The scan speed is 30% faster than the last generation due to Aoralscan 3's drastically upgraded scanning technology.



MORE ACCURATE SCAN

Thanks to optimized algorithms and imaging mechanisms, Aoralscan 3 carries out more accurate and precise results by 30%, meeting the clinical needs of different applications.



LONGER SCAN TIP

Slimmer and 15% longer autoclavable scanner tips offer patients a more comfortable clinical experience.



GREATER SCAN DEPTH

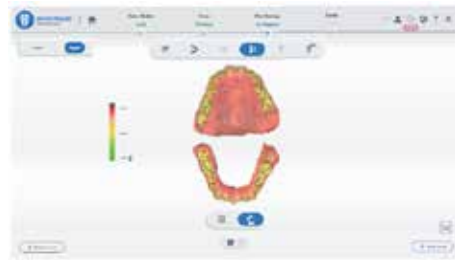
Aoralscan 3 is suitable for various clinical scenarios including acquiring scan bodies and periodontal scans.

Clinical Toolkit

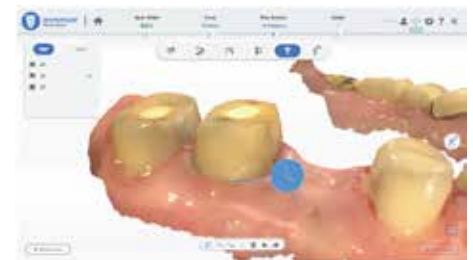
The clinical toolkit assists dentists to evaluate and pre-design the scanned data in their own clinic. It facilitates effective communication with dental labs to deliver quality dental work with high efficiency.



Undercut Check



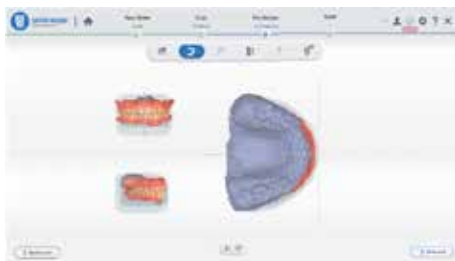
Bite Check



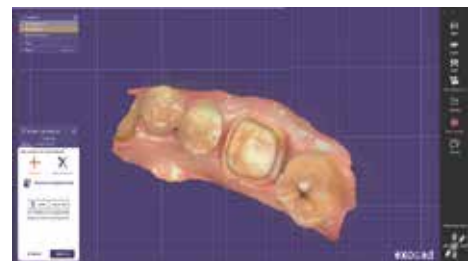
Margin Line Auto Extraction



Tooth Marking



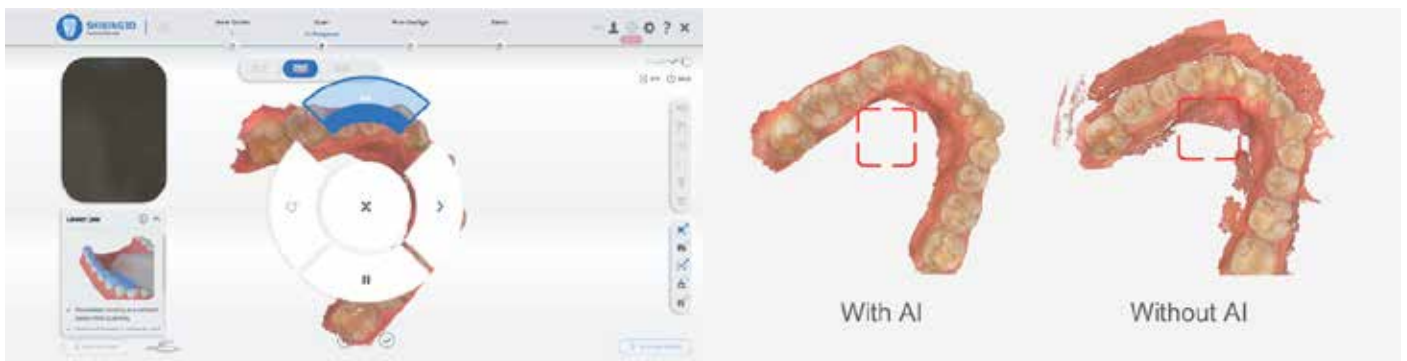
Coordinate Adjustment



Direct Export to exocad

User-Friendly

Smart and Intuitive - Smooth Scanning Experience



AI SCAN

Automatically identifies and filters out unnecessary soft tissue data during scanning resulting in a quicker and cleaner scan process.

MOTION SENSING

Dentists can scan with minimal contact with the computer, ensuring a safe and efficient scan experience.

Distributed By



Pottenborgsvägen 4D
SE-263 57 Höganäs
info@brotech.se
+46 (0)42 400 20 42
www.brotech.se