

RELIANCE ORTHODONTICS INTRODUCES

TKO Composite Paste

Light Cure Multi-Purpose Composite

TKO is a versatile composite with strength and a low modulus of elasticity. TKO composite paste is effective in both laboratory and chairside applications.

ONLY FROM  **RELIANCE®**

Proprietary Working Properties for Specific Applications

CURES STRONG AND SMOOTH WITH MODEST PLIABILITY

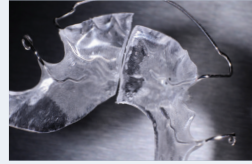
- Resists Opposing enamel wear
- Soft cure resin matrix for patient comfort

VISCOSITY PERFECTED FOR VARIED APPLICATIONS

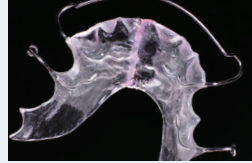
- Controlled needle tip dispensing
- Flexes and recovers with acrylic appliances

PINK SHADE

- Aids in placement, removal and clean up
- Matches acrylic appliances



ACRYLIC APPLIANCE REPAIRS



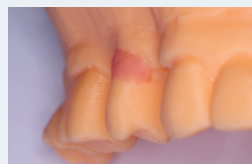
OCCUSAL BUILD-UPS



BITE OPENING RAMPS



LABORATORY BLOCK OUT APPLICATIONS



 **TKO INSTRUCTIONAL VIDEO AVAILABLE AT RELIANCEU.TECH**