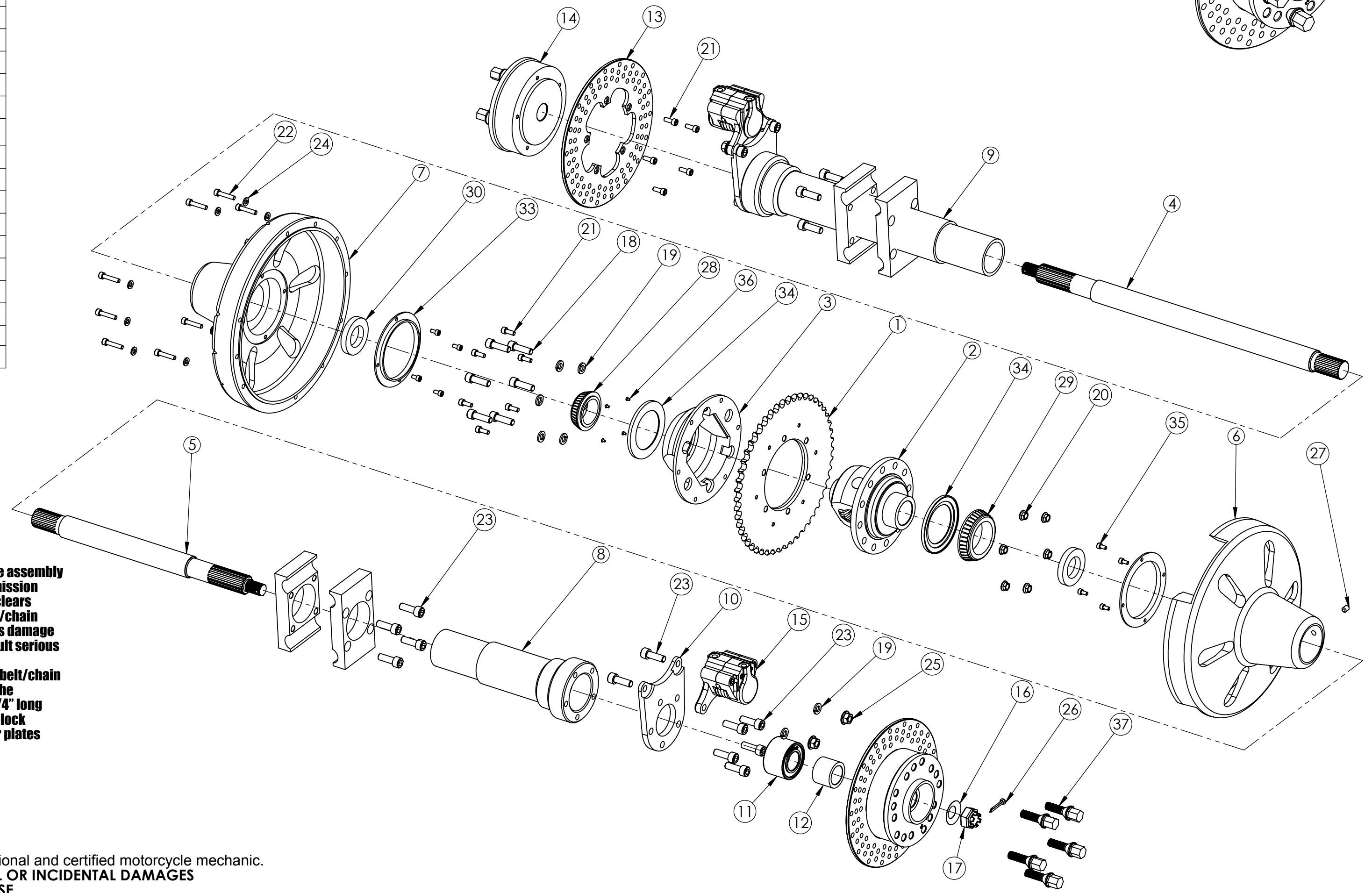
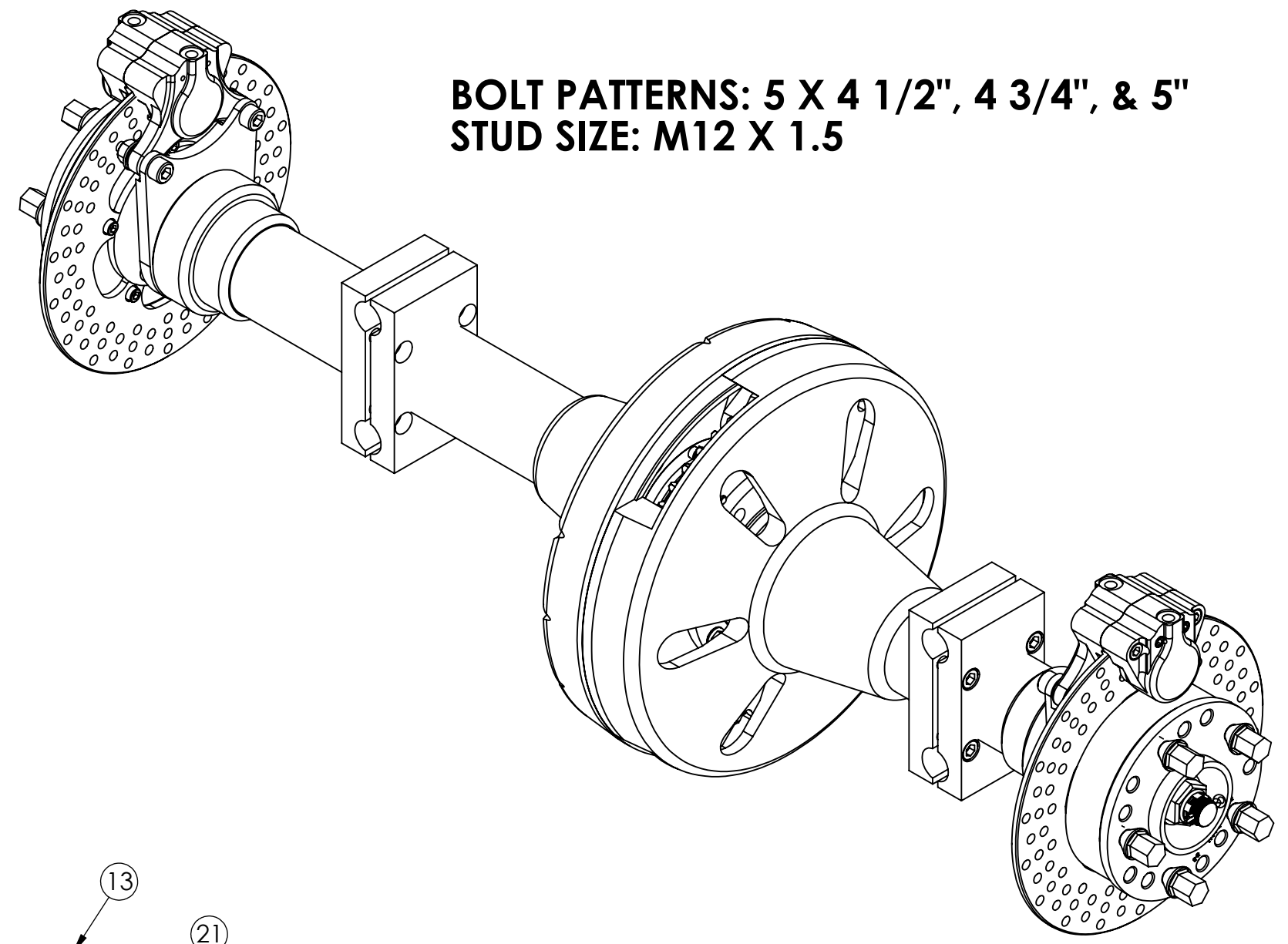


ITEM NO.	QTY.	PART NUMBER	DESCRIPTION
1	1	M-AXS-1000	51 Tooth Sprocket
2	1	M-AX-2000-01	Differential
3	1	M - A X - 2 0 0 0 - 0 7	Differential Cover
4	1	M - A X - 2 0 0 0 - 2 3	35 x 608mm Drive Shaft
5	1	M - A X - 2 0 0 0 - 2 4	35 x 432mm Drive Shaft
6	1	M - A X - 2 0 0 2 - 1 1	Sprocket Housing (Windowed)
7	1	M - A X - 2 0 0 2 - 1 2	Sprocket Housing
8	1	M - A X - 2 0 0 0 - 0 6 L	Drive Shaft Sleeve (Short)
9	1	M - A X - 2 0 0 0 - 0 6 R	Drive Shaft Sleeve (Long)
10	2	M-BC-1007	2 Piston Brake Caliper Bracket
11	2	M-AX-2000-15	60mm x 30mm x 37mm Bearing
12	2	M - A X - 2 0 0 0 - 2 5	42mm x 32 mm Spacer
13	2	M-RT-4050	Trike Brake Rotor
14	2	M - A X - 2 0 0 0 - 0 4	Wheel Hub
15	2	M-BC-1005	2 Piston Brake Caliper
16	2	M - A X - 2 0 0 0 - 1 8	Lock Washer
17	2	M - A X - 2 0 0 0 - 2 1	Shaft Slotted Nut
18	6	---	3/8-16 X 1.25 Socket Head Bolt
19	10	---	3/8 Spring Lock Washer
20	6	---	3/8-16 Flange Nut
21	16	---	M6-1.0 X 16 Socket Head Bolt
22	10	---	M6-1.0 X 30 Socket Head Bolt
23	22	---	M10-1.5 X 30 Socket Head Bolt
24	10	---	M6 Washer
25	4	---	M10-1.5 Flange Nut
26	2	---	Cotter Pin
27	2	---	M8 -1.25 X 10 Socket Head Bolt
28	1	M-AXB-1000-1	63mm x 41mm x 20mm Bearing
29	1	M-AXB-1000-2	82mm x 54mm x 20mm Bearing
30	2	M-AX-2000-10	Shaft Bearing Seals
31	2	M - A X - 2 0 0 0 - 0 8	Mounting Cling Block Threaded
32	2	M - A X - 2 0 0 0 - 0 9	Mounting Cling Block
33	2	M-AXB-1002	Bearing Bolt-on seal
34	2	M-AXB-1003	Bearing Base seal
35	8		
36	4		
37	10	M-AX-2000ST	M12 X 1.5 Lug Bolt

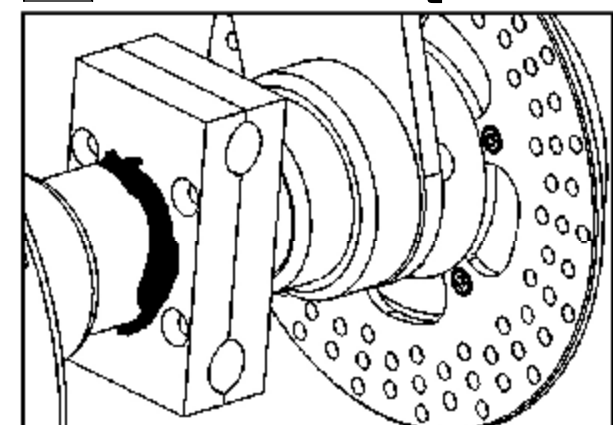
Brake Caliper Replacement Parts	Part Number
2 Piston Brake Pads	M-BC-1011
2 Piston Brake Caliper Rebuild Kit	M-BC-1024
Banjo Bolt	M-BB-1000
Bleeder Screw	M-BC-1001

BOLT PATTERNS: 5 X 4 1/2", 4 3/4", & 5"
STUD SIZE: M12 X 1.5



Torque Value	Item #
15/17 Ft/Lbs. - 20/23 Nm	27, 28, 33
45/50 Ft/Lbs. - 61/68 Nm	24, 26, 29
85/90 Ft/Lbs. - 115/122 Nm	22, 37

! WELDING IS REQUIRED



Before Welding: make sure the axle assembly is properly aligned with the transmission drive pulley, and the belt or chain clears the windows on housing, if the belt/chain does not clear the windows serious damage may occur to housing and may result serious injury to the rider.
After performing your side-to-side belt/chain alignment and rotational index of the belt/chain windows, place three 3/4" long welds around the axle (12, 4, & 8 o'clock position) on the left and right inner plates (as shown on illustration)

- Legend:**
 ◆ Apply 242 Blue Loctite
 ⊗ Not Included

DNA Specialty Inc. Property & Confidential
WARNING!!! The Installation of this product should be done by a professional and certified motorcycle mechanic.
DNA SPECIALTY WILL NOT BE HELD LIABLE FOR ANY CONSEQUENTIAL OR INCIDENTAL DAMAGES RESULTING FROM IMPROPER INSTALLATION, MODIFICATION, OR ABUSE