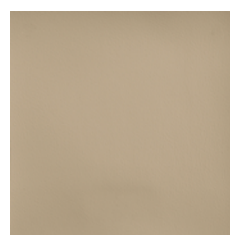




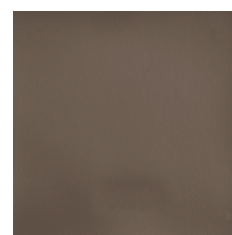
D18



D27



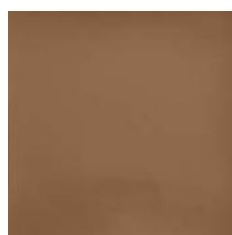
DB2



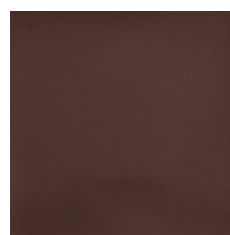
FD5



D37



E16



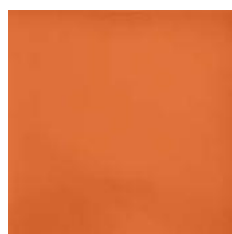
F42



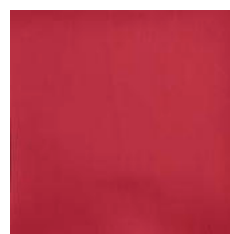
F84



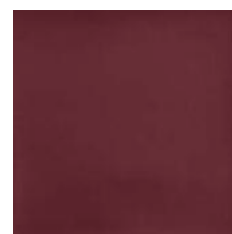
Q73



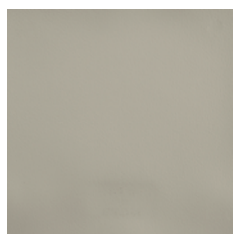
CA9



CD6



F71



BA8



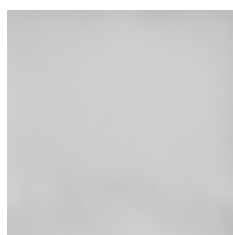
CD5



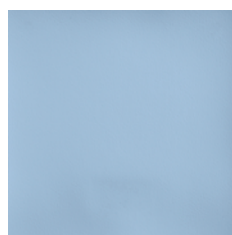
EB2



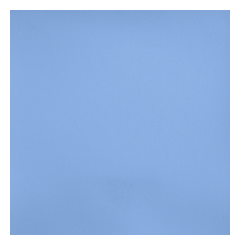
EZ5



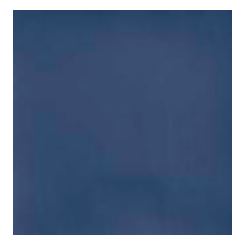
B41



GB5



G03



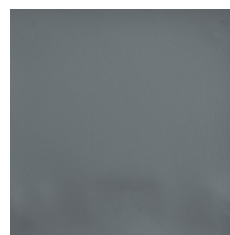
HA4



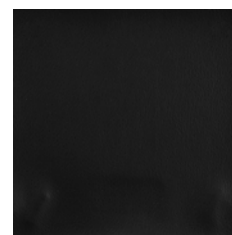
P35



BB3

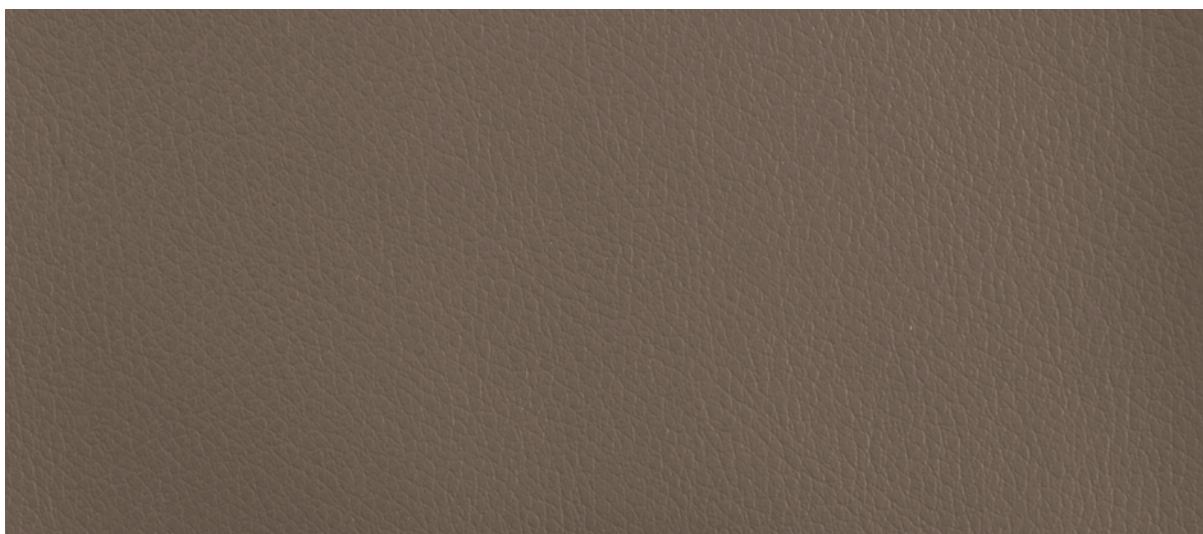


M31



B99

Altri colori disponibili su richiesta / More colors available upon request



FD5

Composizione Spalmato PVC 90%
Supporto poliammide 10%


Peso 710 gr/m² + 5%

Altezza 138 cm + 5%

**Resistenza all'abrasione
Martindale ISO 5470-2** 100.000 cicli

**Solidità alla luce
xeno - ISO 105 B02** 4-5

**Certificati di
resistenza al fuoco** UNI 9175 Classe 11M
UNI 1021-1+2:2014
BS 5852 IS 1+2
BS 5852 IS CRIB 5
IMO RES.MSC 61 (16)
FMVSS 302
FAR 25.853

Manutenzione 
Pulire con panno o spugna inumiditi e detergente neutro. Non usare alcol, solventi e candeggine o altri prodotti corrosivi

Particolarità Outdoor, impermeabile, antibatterico, antimuffa, antimicrobico e idrorepellente. Reach conforme, esente da Ftalati e DOP

Indicato per uso contract Grado di resistenza all'uso:
intenso ●●●○

Il tessuto spalmato ha caratteristiche di assorbenza ed è soggetta a trasferimenti di colore. Si potrebbe macchiare indelebilmente in caso di: contatto con materiali e tessuti scuri, jeans blu/neri o capi di abbigliamento non trattati e inchiostro di penna. La garanzia sul prodotto non copre questo tipo di danni

Attenzione I tessuti indoor direttamente esposti alla luce del sole a ridosso di vetrate sono soggetti a deterioramento

Composition PVC coating 90%
Nylon backing 10%


Weight 710 gr/m² + 5%

Width 138 cm + 5%

**Abrasion test
Martindale ISO 5470-2** 100.000 cycles

**Lightfastness
xeno - ISO 105 B02** 4-5

**Fiammability
certificates** UNI 9175 Class 11M
UNI 1021-1+2:2014
BS 5852 IS 1+2
BS 5852 IS CRIB 5
IMO RES.MSC 61 (16)
FMVSS 302
FAR 25.853

Maintenance 
Clean with cloth or sponge imngued with mild soap. Do not use alcohol, solvents and bleaches, or other corrosive detergents

Particularity Outdoor, waterproof, antibacterial, anti-mold, antimicrobial and water repellent. Reach complaint, Phthalate and DOP free

**Fabric for commercial
and Horeca use** Wear and tear resistance:
extreme ●●●○

Faux leather absorbs easily and is subject to color transfer. It may be indelibly stained if it comes into contact with: dark fabrics and faux leather, blue/black jeans or untreated clothes and pen ink. The product warranty does not cover this type of damages

Warning Indoor fabrics that are exposed to direct sunlight close to windows are subject to deterioration

