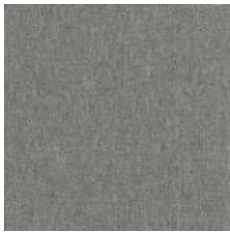




# MINI MELANGE

CAT. LUSO

Jaquard



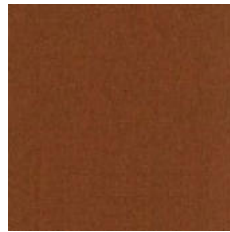
8504



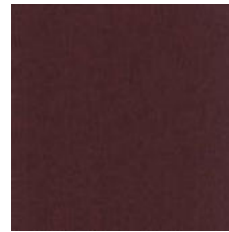
1514



3508



4530



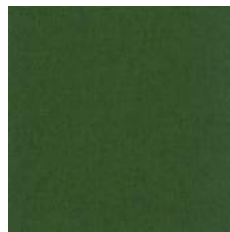
4503



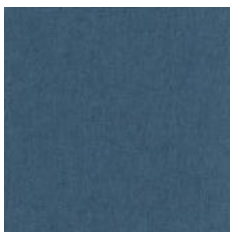
6509



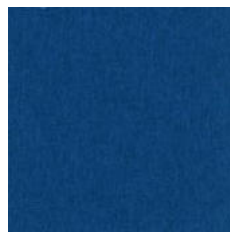
7522



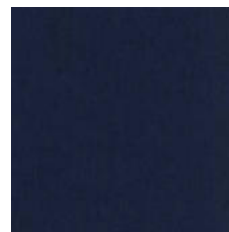
7509



6512



6504

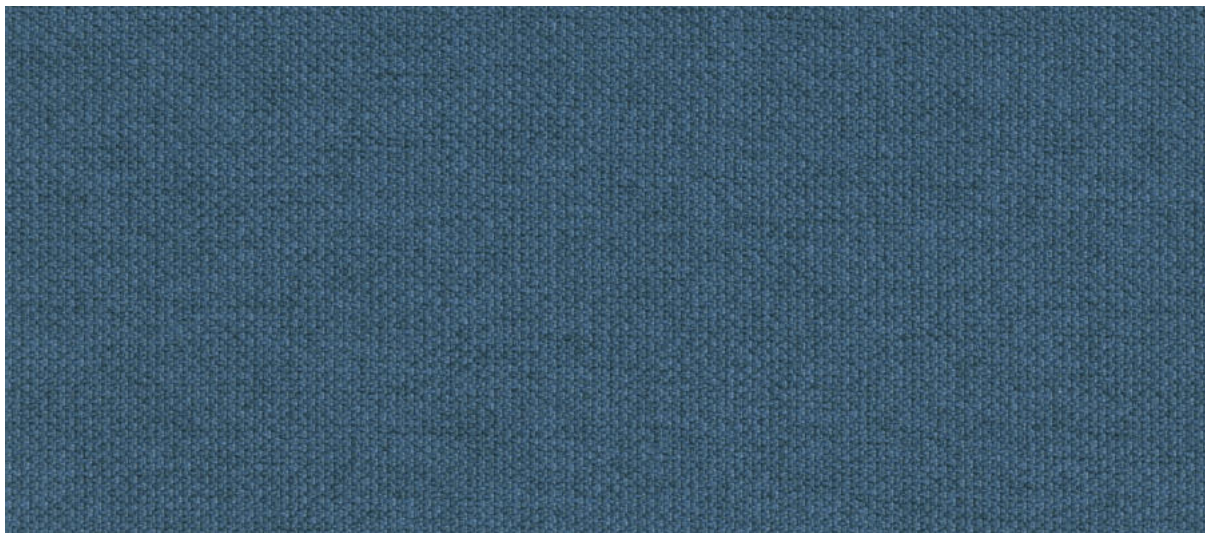


6515







7503

Altri colori disponibili su richiesta / More colors available upon request



6512

<b>Composizione</b>	Poliestere FR 100% 
<b>Peso</b>	340 gr/m <sup>2</sup> ± 5%
<b>Altezza</b>	140 cm ± 2%
<b>Resistenza all'abrasione Martindale ISO 12947-2</b>	100.000 cicli ± 10%
<b>Solidità alla luce xeno - ISO 105 B02</b>	6
<b>Certificati di resistenza al fuoco</b>	UNI 9175 Classe 1IM UNI 9174-8456 Classe C1 EN 1021-1+2:2014 EN 13773 Classe 1 NF-92501-7 Classe M1 NF-D 60013 Classe AM18 DIN 4102 Classe B1 BS 5852 IS CRIB 5 BS 7176:2006 Medium Hazard California TB 117:2013 NFPA 701 NFPA 260 B1-Q1-TR1 Önorm FTP Code 307(88):10 Annex 1 Part. 8
<b>Manutenzione</b>	
<b>Indicato per uso contract</b>	Grado di resistenza all'uso: intenso ●●●○
<b>Attenzione</b>	I tessuti indoor direttamente esposti alla luce del sole a ridosso di vetrate sono soggetti a deterioramento

<b>Composition</b>	Polyester FR 100% 
<b>Weight</b>	340 gr/m <sup>2</sup> ± 5%
<b>Width</b>	140 cm ± 2%
<b>Abrasion test Martindale ISO 12947-2</b>	100.000 cycles ± 10%
<b>Lightfastness xeno - ISO 105 B02</b>	6
<b>Fiammability certificates</b>	UNI 9175 Class 1IM UNI 9174-8456 Class C1 EN 1021-1+2:2014 EN 13773 Class 1 NF-92501-7 Class M1 NF-D 60013 Class AM18 DIN 4102 Class B1 BS 5852 IS CRIB 5 BS 7176:2006 Medium Hazard California TB 117:2013 NFPA 701 NFPA 260 B1-Q1-TR1 Önorm FTP Code 307(88):10 Annex 1 Part. 8
<b>Maintenance</b>	
<b>Particularity</b>	Wear and tear resistance: extreme ●●●○
<b>Warning</b>	Indoor fabrics that are exposed to direct sunlight close to windows are subject to deterioration

