



1001



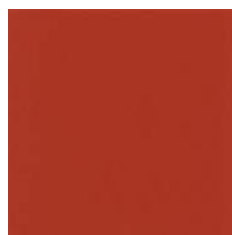
3530



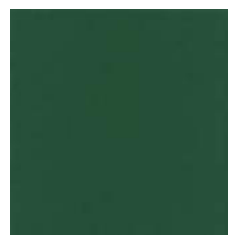
7521



1006



4066



7029



2519



4037



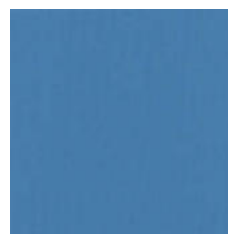
7026



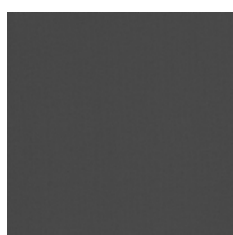
8504



4067



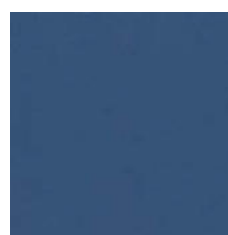
6024



8017



4021

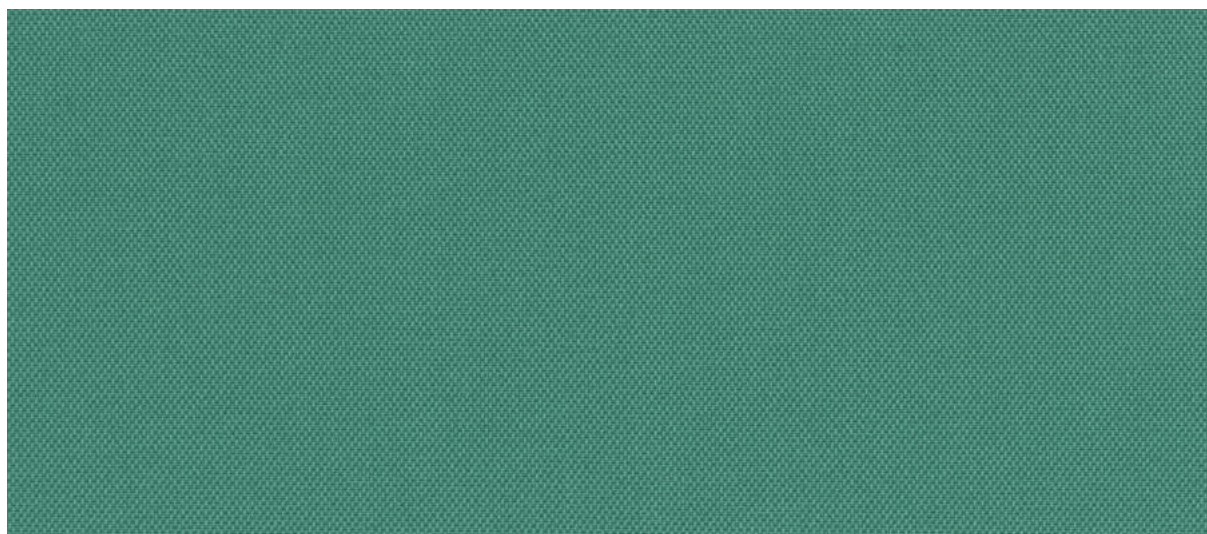


6512





4503

Altri colori disponibili su richiesta / More colors available upon request



7026

Composizione	Poliestere riciclato 100%
Peso	350 gr/m ² ± 5%
Altezza	150 cm ± 5%
Resistenza all'abrasione Martindale ISO 12947-2	100.000 cicli ± 10%
Solidità alla luce xeno - ISO 105 B02	6
Certificati di resistenza al fuoco	UNI 9175 Classe 1IM EN 1021-1+2:2014 BS 5852 IS CRIB 5 BS 7176:2007 Medium Hazard California TB 117:2013 FTP Code 307(88):10 Annex 1 Part. 8
Certificato di assorbimento acustico	UNI EN ISO 354:2003
Manutenzione	
Particolarità	Fonoassorbente. Tessuto creato interamente da bottiglie di plastica riciclata post-consumo
Indicato per uso contract	Grado di resistenza all'uso: intenso ●●●○
Attenzione	I tessuti indoor direttamente esposti alla luce del sole a ridosso di vetrate sono soggetti a deterioramento

Composition	Recycled polyester 100%
Weight	350 gr/m ² ± 5%
Width	150 cm ± 5%
Abrasion test Martindale ISO 12947-2	100.000 cycles ± 10%
Lightfastness xeno - ISO 105 B02	6
Fiammability certificates	UNI 9175 Class 1IM EN 1021-1+2:2014 BS 5852 IS CRIB 5 BS 7176:2007 Medium Hazard California TB 117:2013 FTP Code 307(88):10 Annex 1 Part. 8
Acoustic test sound absorption	UNI EN ISO 354:2003
Maintenance	
Particularity	Sound absorbing. Fabric created entirely from post-consumer recycled plastic bottles
Fabric for commercial and Horeca use	Wear and tear resistance: extreme ●●●○
Warning	Indoor fabrics that are exposed to direct sunlight close to windows are subject to deterioration

