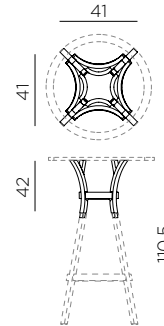







# KIT COMBO HIGH

design Raffaello Galiotto



**Ref. 031**



-  1,8 peso prodotto in kg  
weight of product in kg
-  1 imballo cartonato - pz e volume in m<sup>3</sup>  
0,076 m<sup>3</sup> carton packing - pcs and volume in cbm
-  30 pz pz su pallet  
pcs on pallet
-  prodotto da montare  
assembly required
-  CATAS prodotto testato a norma da Catas  
product tested by Catas



Life Cycle Assesment  
For more information visit  
[www.nardioutdoor.com/sustainability](http://www.nardioutdoor.com/sustainability)

**IT** Sistema di rialzo per tavolo Combo 60-70 (da 75 cm a 110,5 cm).  
Materiale: polipropilene fiberglass rigenerato\* trattato anti-UV e colorato in massa. Finitura opaca. Montaggio facile con sistema a clip. Resina riciclabile.

**EN** Height Lifting System (from 75 cm to 110,5 cm) for Combo 60-70 Table.  
Material: regenerated uniformly colored fiberglass polypropylene resins\* with UV additives. Matt finish. Easy assembly with clip system. Recyclable resin.

**FR** Système de hauteur pour table Combo 60-70 (de 75 cm à 110,5 cm).  
Matériau: polypropylène fiberglass régénérée\* traité anti-UV et coloré dans la masse. Effet mat. Installation facile avec système de clips. Résine recyclable.

**DE** Untergestell für Tisch Combo 60-70 (von 75 cm bis 110,5 cm).  
Material: regeneriertem UV-beständigem fiberglass-Polypropylen\*, voll durchgefärbt. Matt-Effekt. Einfache Installation durch Clip-System. Recyclebarer Kunststoff.

**ES** Accesorio de elevación de mesa Combo 60-70 (de 75 cm a 110,5 cm).  
Material: polipropileno fiberglass regenerado\* tratado anti-UV y teñido en masa. Efecto mate. Montaje fácil con sistema de clips. Resina reciclable.

**PT** Sistema de elevação para mesa Combo 60-70 (de 75 cm a 110,5 cm).  
Material: polipropileno fiberglass regenerado\* com tratamento anti-UV colorido na totalidade. Acabamento fosco. Montagem fácil com sistema de grampo. Resina reciclável.



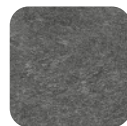
TERRA  
40031.44.000



GESSO  
40031.29.000



CACTUS  
40031.27.000



BASALTO  
40031.25.000

\* **IT** Il polipropilene fiberglass rigenerato può presentare delle variazioni di colore dovute all'utilizzo di materiale riciclato. **EN** Regenerated fiberglass polypropylene may vary in color due to the use of recycled material. **FR** Polypropylène fiberglass régénérée peut présenter variations de couleur en raison de l'utilisation de matériaux recyclés. **DE** Regeneriertem fiberglass-Polypropylen kann aufgrund der Verwendung von recyceltem Material Farbabweichungen aufweisen. **ES** El polipropileno fiberglass regenerado puede presentar variaciones de color debido al uso de material reciclado. **PT** O polipropileno fiberglass regenerado pode apresentar variações de cor devido ao uso de material reciclado.