

## ACCESSORIES FOR CABINETS AND OPEN RACKS

BASE

## Plinth side panels

There are three types of plinth side panels available - see the picture. Each type has the standard height of 99 mm. Side panels can be removed even when the cabinet is loaded with equipment.

## Material

Sheet steel, powder painted in light grey (RAL 7035) or black (RAL 9005).

## Scope of delivery

Panel with fixing elements.

Product name	Length of side panel [mm]	Length of plinth's side [mm]	Catalogue number	
			RAL 7035	RAL 9005
Solid side panel	800	1000	WZ-1982-03-08-011	WZ-1982-03-08-161
	600	800	WZ-1982-03-07-011	WZ-1982-03-07-161
	400	600	WZ-1982-03-05-011	WZ-1982-03-05-161
Perforated side panel	800	1000	WZ-1982-05-08-011	WZ-1982-05-08-161
	600	800	WZ-1982-05-07-011	WZ-1982-05-07-161
	400	600	WZ-1982-05-05-011	WZ-1982-05-05-161
Side panel with brush opening	800	1000	WZ-1982-04-08-011	WZ-1982-04-08-161
	600	800	WZ-1982-04-07-011	WZ-1982-04-07-161
	400	600	WZ-1982-04-05-011	WZ-1982-04-05-161

Package: 1 pc.



Solid side panel



Perforated side panel



Side panel with brush opening

## Plinth corners

They are available in two types:

- Simple corners – they can be fixed to the room's floor and provided with rubber vibro shock absorbers.
- Corners with levelling option – with feet.

## Material

Corners: sheet steel powder painted in light grey (RAL 7035) or black (RAL 9005).

Levelling feet: see page 52.

## Scope of delivery

Set of 4 corners include fixing accessories. Corners with levelling option are delivered with adjustable feet.

Product name	Height [mm]	Package	Catalogue number	
			RAL 7035	RAL 9005
Set of 4 simple corners	200	1 set	WZ-2174-05-02-011	WZ-2174-05-02-161
	100	1 set	WZ-1982-08-02-011	WZ-1982-08-02-161
Set of 4 corners with levelling option	200	1 set	WZ-2402-10-00-011	WZ-2402-10-00-161
	100	1 set	WZ-2401-05-02-011	WZ-2401-05-02-161



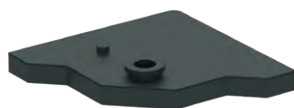
Simple corners



Corners with levelling option

## ACCESSORIES FOR CABINETS AND OPEN RACKS

## BASE



Vibro-shock absorber



Corner with vibro-shock absorber

**Vibro-shock absorbers**

The simple plinths can be optionally equipped with vibroshock absorbers.

Plinth with vibro-shock absorbers should be fixed into the room's floor. Four vibro-shock absorbers are needed for one plinth.

**Material**

10 mm thick rubber

**Scope of delivery**

Set of 4 vibro-shock absorbers without fixing accessories.

Package	Catalogue number
1 set = 4 pcs	M1Z-00-0048



Levelling feet for cabinets and racks

**Levelling feet**

Levelling feet for cabinets and racks.

Thread: M12x38

Ways of adjustment:

- with 19 mm open ended spanner,
- with 5 mm wrench spanner (imbus).

**Material**

Adjustable screw – zinc-coated steel

Base - plastic

**Scope of delivery**

Adjustable feet with lock nuts

- set of 4 pcs.

Package	Catalogue number
1 set = 4 pcs	WZ-5571-42-00-000



Locking castor 150



Non-locking castor 150

**Castors 150**

For cabinets: **SZB IT**, as well as for open racks: **SRD, SRX**.

One cabinet or open rack requires 2 locking and 2 non-locking castors.

Maximum load capacity of 4 castors: 400 kg\*

**Scope of delivery**

Set of 2 castors (locking or non-locking type) with screws and washers for fixing into the cabinet or rack.

Product name	Package	Catalogue number
Locking castor 150	1 set = 2 pcs	WZ-SB72-00-01-000-2
Non-locking castor 150	1 set = 2 pcs	WZ-SB72-00-02-000-2

\* Applicable to castors only. Loading capacity of the cabinet (or open rack) is specified in the description.

ACCESSORIES FOR CABINETS AND OPEN RACKS

BASE

Castors 300

For cabinets: **SZB IT, SIZE2 PC.**  
One cabinet requires 2 locking, 2 non-locking castors and 2 strenghtening bars. One bar with locking castors is fixed at the cabinet's front, and the other bar with non-locking castors at the rear.  
Maximum load capacity of 4 castors: 600 kg\*

**Surface finishing**  
Strenghtening bar for castors - powder painted light grey (RAL 7035).

- Scope of delivery**  
These are available in sets:
- 2 castors (locking or non-locking type) with screws and washers for fixing into the strenghtening bar,
  - 2 supporting bars for castors with screws and washers for fixing into the bottom plate of the cabinet.

Product name	Package	Catalogue number
Locking castors 300 steering type	2 pcs	WZ-SB73-00-01-000-2
Non-locking castors 300 fixed type	2 pcs	WZ-SB73-00-02-000-2
Strenghtening bars600 mm	2 pcs	WZ-SB74-00-01-011-2
for cabinet's width800 mm	2 pcs	WZ-SB74-00-02-011-2

\* Applicable to castors only. Loading capacity of the cabinet is specified in the description.



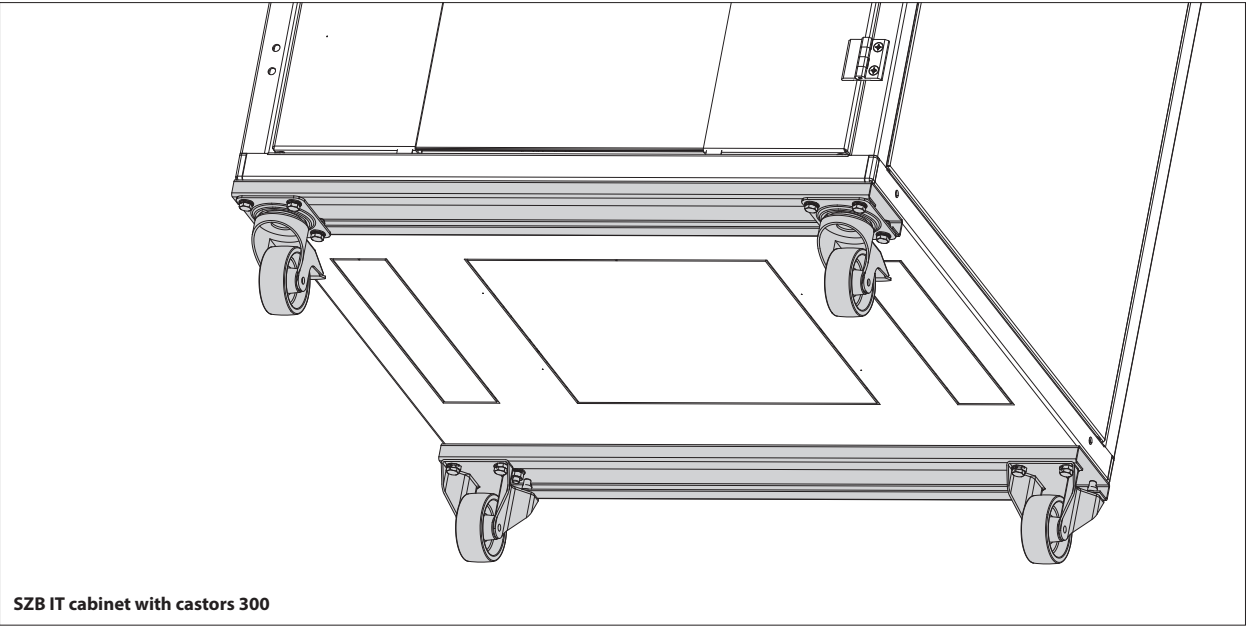
Locking castor 300 steering type



Non-locking castor 300 fixed type



Strenghtening bar for castors 300



SZB IT cabinet with castors 300