

**darrol<sup>®</sup>**

by Retailment

# 700 SERIES WITH FLEXIBLE WOODEN ARMS

---



# DARROL 700 SERIES

## WITH FLEXIBLE WOODEN ARMS

Flexible wooden arms with movable fingers is a trend that has returned.

Darrol has chosen our own solution where you do not have to use shoulder pads or other padding to fill the area between the shoulder joint and the wooden arm to compensate for the ugly folds that occur in - and around this area.

We have simply chosen to keep the "hanger shape" in order to optimize the presentation of the merchandise, respectively on the mannequin as well as on the torso form.



### ART-790

Height	162 cm
Chest	88 cm
Waist	66 cm
Hip	84 cm
Inside leg	84 cm
Heel height	8 cm
Sitter plinth height	45 cm
Shoe size	39



### ART-791

Height	162 cm
Chest	88 cm
Waist	66 cm
Hip	84 cm
Inside leg	84 cm
Heel height	8 cm
Sitter plinth height	45 cm
Shoe size	39



### ART-795

Height	170 cm
Chest	98 cm
Waist	84 cm
Hip	88 cm
Inside leg	90 cm
Sitter plinth height	45 cm
Shoe size	44



### ART-796

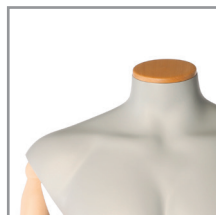
Height	170 cm
Chest	98 cm
Waist	84 cm
Hip	88 cm
Inside leg	90 cm
Sitter plinth height	45 cm
Shoe size	44

### Colour

Standard body colour grey.  
700 series can be delivered  
in any RAL colour.

Each standing mannequin is  
supplied with a Ø 42 cm round  
glass base with calf spike  
support.

The system is based on the already well-known Darrol neck-lock system, we offer a broad palette of flexibility with a neck plate solution or a abstract head. Standard finish neck plate is made of fiberglass, but you can choose between wood or metal finish and maybe even a solution with your own logo, please contact your Darrol dealer for surcharge and conditions regarding this option.



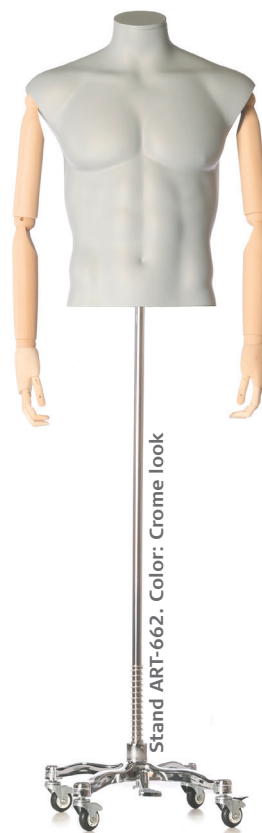
**Option:**  
**Light wood neck plate**  
Male: CAP M03  
Female: CAP F03



**Option:**  
**Neck plate metal**  
Male: CAP M02  
Female: CAP F02



**Option:** Logo plate,  
please contact  
Retailment regarding  
this option



**ART-797**  
Height 170 cm  
Chest 98 cm  
Waist 84 cm



**ART-792**  
Height 162 cm  
Chest 88 cm  
Waist 66 cm

## Convert your headless mannequin or torso



The headless mannequin



Simply remove the neck  
plate



Replace the neck plate  
with your choice of head



All done - you got a man-  
nequin with head



# Retailment

Mannequins & interior

Retailment A/S  
Knud Bro Allé 10  
3660 Stenløse  
Denmark

Telefon +45 4717 1607  
[info@retailment.com](mailto:info@retailment.com)  
[www.retailment.com](http://www.retailment.com)  
[www.deco4shops.com](http://www.deco4shops.com)

