



DUAL CS 618

MANUAL HIFI-TURNTABLE



TRADITIONAL MANUAL TURNTABLE WITH DIRECT DRIVE

Dual direct drive concepts have been synonymous with outstanding durability and quality for decades. The CS 618 impresses with a quiet direct drive that keeps the platter speed precise and silent.

The turntable's twin gimbal precision tonearm is further optimised by the Ortofon 2M Blue to deliver outstanding sound quality. Discover an even more precise and improved audio reproduction for a first-class listening experience.

With an electronic motor stop and automatic lift at the end of the record, the CS 618Q offers the highest level of operating comfort for a manual turntable. In addition, there are the other comfort elements of the CS series. The stepless antiskating can be easily adjusted using a rotary knob with a clear scale. The electronic adjustment of the three speeds is conveniently carried out via a rotary switch, while the appropriate pickup can be easily changed using the headshell.

**HIGH-END TURNTABLE WITH AUTOMATIC LIFT
AND STOP FUNCTION**

THE NEW DUAL CS-SERIES

DEVELOPED IN OUR OWN
DESIGN CENTRE IN GERMANY

PRECISION

From clockwork to turntable

QUALITY

5 year warranty

TRADITION

Building turntables for generations



< ALFRED LANGER
ABOUT THE NEW
DUAL CS-SERIES

INTERCHANGEABLE HEADSHELL

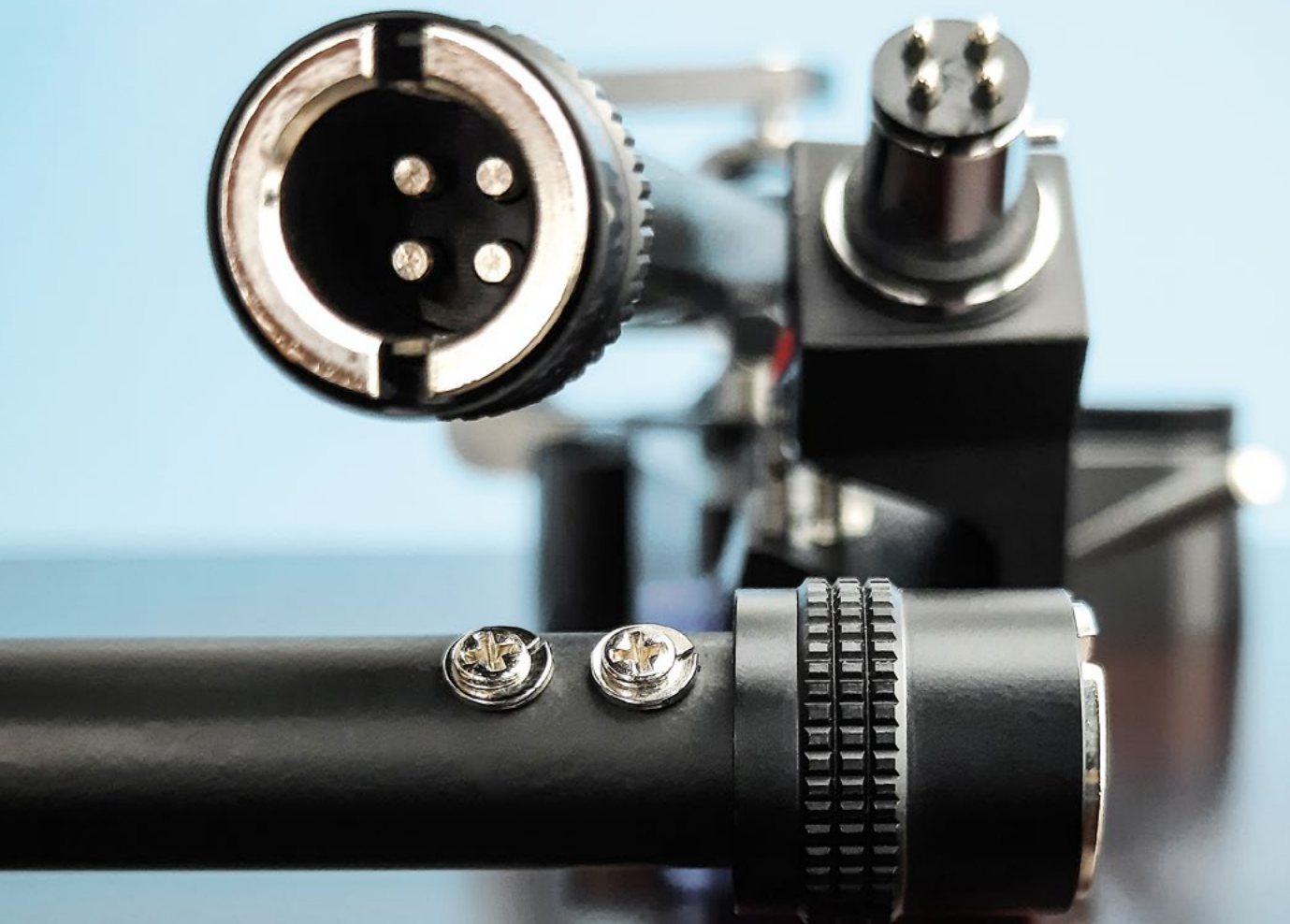
DUAL TECHNOLOGY

Quick and easy

Thanks to the screw mechanism for the headshell and simple adjustment options for tracking force and anti-skating, changing the headshell takes less than a minute.

Always correctly adjusted

Our turntables make it easy to change cartridges without having to readjust them. Your cartridge is mounted and adjusted correctly once so that subsequent changes can be carried out effortlessly. Discover the efficiency and precision of our turntables, which meet the highest standards of user-friendliness.



SPRING LOADED ANTISKATING

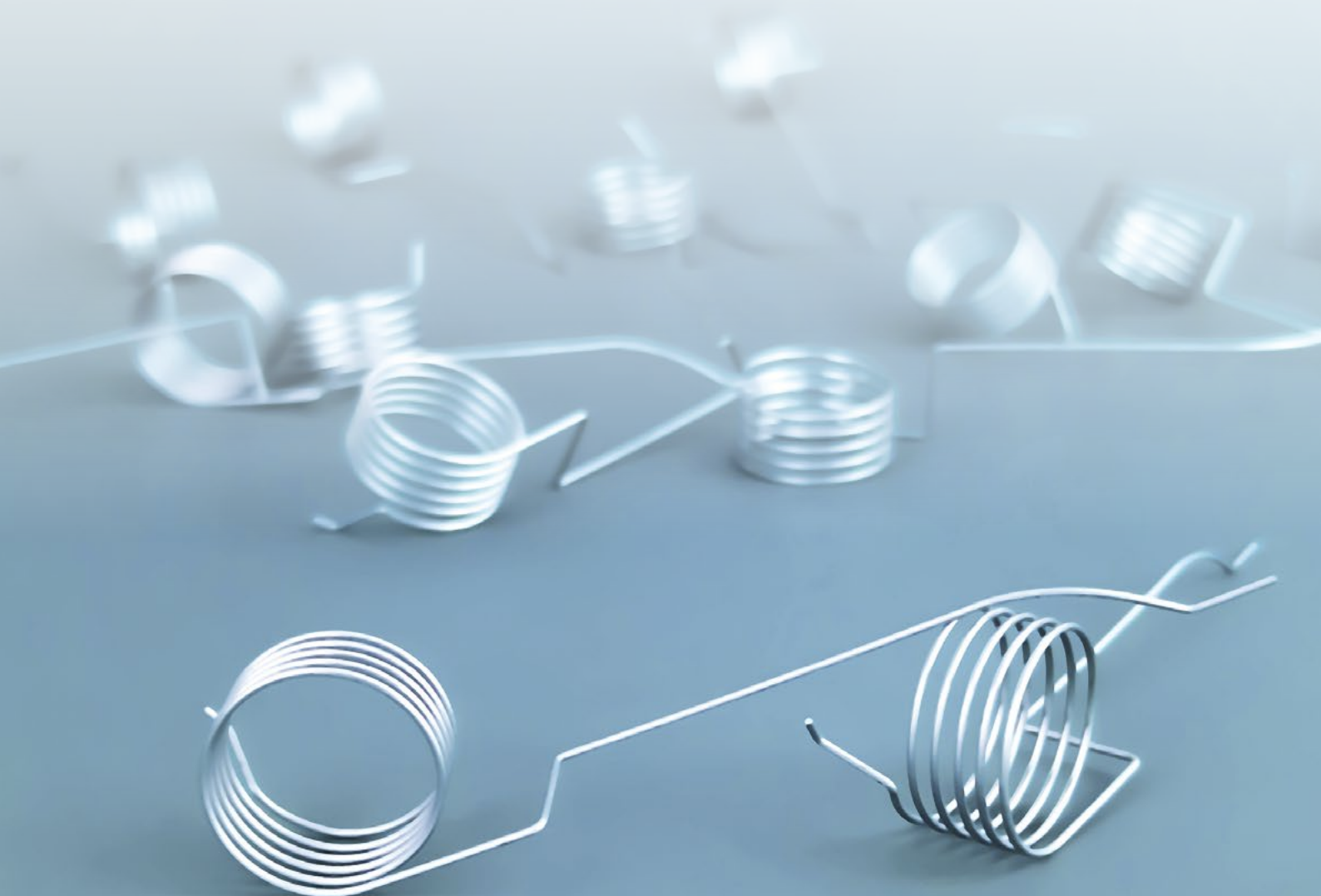
DUAL TECHNOLOGY

Stepless adjustment for fine tuning

Dual turntables offer stepless adjustment using a rotary knob, without predetermined increments. The easy-to-read scale serves as a guideline for quick and easy adjustment of the antiskating.

Precise skating correction

An ingenious mechanism with a specially shaped spring ensures precise skating compensation over the entire playback range. Experience precise adjustment for optimum sound quality with this system.



THE CLASSIC DUAL TONEARM

DUAL TECHNOLOGY

High-precision twin gimbal tonearm bearing

The classic Dual tonearms are characterised by a twin gimbal bearing. The arrangement of the bearing points around the tonearm tube reduces tilting moments to an absolute minimum.

Precision pivot ball bearings for the highest demands

The bearing is based on precision pivot ball bearings in combination with a precise machined tip in the rotation shaft. This design ensures virtually movement-free operation and minimises friction. Experience outstanding sound precision and stability thanks to our innovative technology.



PLINTH: SOLID MDF

- Options: Black vinyl, gloss paint, walnut veneer
- Switchable auto-stop function
- Elastomer vibration absorber inside the feet



PLATTER: ALUMINIUM DIE-CAST

- Heavy and precise aluminium die-cast platter
- Hardened steel spindle integrated in the direct-drive
- Heavy rubber mat for resonance damping



TONEARM: TWIN GIMBAL

- Switchable automatic tonearm lift function
- Solid aluminium gimbal construction
- Four fine pivot ball-bearings



DRIVE: DIRECT-DRIVE

- Quartz stabilised for 33 / 45 / 78
- No vibrations through coreless inductors
- Double shielded to eliminate magnetic fields



DUAL TECHNICAL SPECIFICATIONS

DUAL CS 618

MOTOR

Drive	Direct drive
Speed settings	33/45/78
Wow & Flutter	< ±0,07 % (DIN rated)

ONEARM

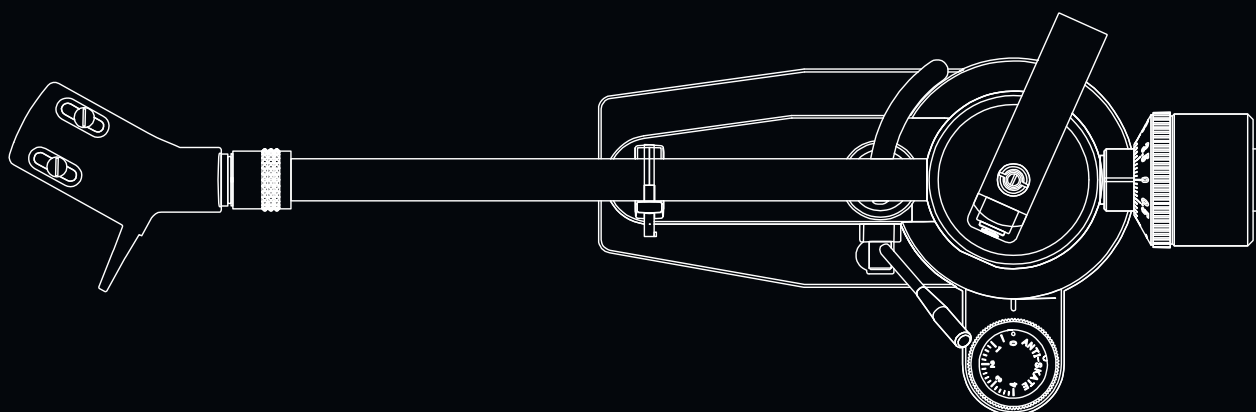
Auto-Start/-Stop-Function	Auto-Stop / Auto Tonarmlift
Bearing	4 x Pivot ball-bearing / twin gimbal mounting
Effective length	221,5 mm
Offset angle	25,6°
Overhang	19 mm
Type	Statically balanced
Stylus pressure range	0 g to 4 g
Cartridge weight range	5 g to 9 g
Factory installed pick up	Ortofon 2M Blue

PLATTER

Material	Aluminium die-cast
Mat	Rubber 2,5 mm
Bearing	Hardened steel spindle Brass bushing
Diameter	305 mm
Weight (incl. Mat)	1450 g

PLINTH

Material	MDF
Surface finish	Vinyl veneer / Black Option: Gloss / Black Option: Veneer Wallnut
Feet	Ø 62 mm / Elastomer
Connection	RCA socket
Connection to phono input	✓
Connection to line input	✓
Digital Output	X
Dimension, closed dustcover	435 x 367 x 145 mm
Dimension, open dustcover	T: 415 mm / H: 400 mm
Weight	7,5 kg



Dual

Dual

**5 YEAR
WARRANTY**

