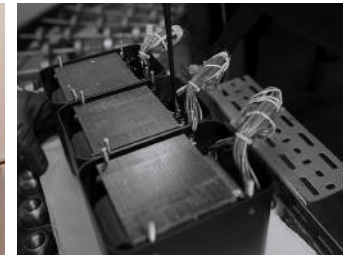
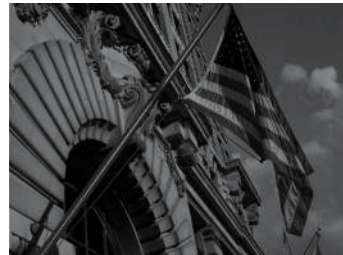


MPC500 power controller

- Inconsistency in power quality can cause costly damage to electronic devices. Protect your home audio investment with the MPC500 Power Controller.
- Featuring cascaded surge protection, the MPC500 delivers AC power line surge protection, such as from a lightning strike, as well as protecting low voltage devices against secondary surges and spikes.
- AC power line protection is accomplished with the use of a thermally protected metal-oxide varistor (TPMOV) – which is far safer than a traditional MOV – that provides you with Line to Neutral protection.
- Low voltage protection provided by Gas Discharge Tubes (GDT), Positive Temperature Coefficient (PTC) thermistors and Transient Voltage Suppression (TVS) components.
- Also provides electromagnetic interference (EMI) filtering of the AC line and over/under voltage protection.
- Available with either Type B¹ (a.k.a. NEMA 5-15R) or Type F¹ (a.k.a. CEE 7/3 or “Schuko”) receptacles.



1. As defined by the International Electrotechnical Commission



Protect Your Home Audio Investment

McIntosh®

LEGENDARY PERFORMANCE*

www.mcintoshlabs.com

MPC500 power controller

AC Power Line Protection:

Thermally protected metal-oxide varistor (TPMOV)

Surge Suppression Type:

AC Line: TPMOV

Secondary Surges: GDTs, PTC thermistors,
TVS components

Number of Receptacles:

With Type B receptacles: 8

With Type F receptacles: 4

Always ON Receptacles:

With Type B receptacles: 2

With Type F receptacles: 1

Programmable Receptacles:

With Type B receptacles: 3 pairs

With Type F receptacles: 3

Overall Dimensions (W x H x D):

17-1/2" (44.45cm) x 6" (15.2cm) x 19" (48.26cm)

Weight:

18.5 lbs (8.39kg) net,

34 lbs (15.42kg) in shipping carton

For the Consumer's Protection:

In order to ensure the highest level of customer satisfaction, new McIntosh products may only be purchased from an Authorized McIntosh Dealer; and, with certain limited exceptions may only be purchased over-the-counter or delivered and installed by the Authorized McIntosh Dealer. McIntosh does not warrant, in any way, products that are purchased from anyone who is not an Authorized McIntosh Dealer, or that have had their serial numbers altered or defaced.



Top: MPC500 with Type B (a.k.a. NEMA 5-15R) receptacles.
Bottom: MPC500 with Type F (a.k.a. CEE 7/3 or "Schuko") receptacles.



Companion Products

The MC312 or MC152 Amplifier, C49 Preamplifier, MA5300 Integrated Amplifier, MS500 Music Streamer, MCD350 SACD/CD Player, and XR50 or XR100 Loudspeakers are logical companions for the MPC500 Power Controller. Your Authorized Dealer can provide additional information on other McIntosh product combinations.

To learn more, please call us at 1.800.538.6576.

McIntosh®

LEGENDARY PERFORMANCE®

www.mcintoshlabs.com