

China Based Analog Manufacturer

Established in 1999



Our team has always adhered to the idea that High Fidelity audio should serve the musical art. Since 2019, we proudly introduces the G series to the world, with the name Skyanalog.

Started as an OEM company, with more than 20 years of research, we gradually developed our core technologies. With the ability to develop and manufacture independently, we had been OEM for many well-known brands from all over the world.

01

Yan(炎) Suspension

A ground-breaking innovation



The key of a MC cartridge lies in the precision of its damping system. It is the heart of the mechanical-to-electrical transducer process dominating how effectively the kinetic energy is transformed into musical information. The art of damping pivots on the principle of "matching" - ensuring that every component works in harmony.



Minimized Information Loss and Distortion



Exceptional Dynamic Range and Lifelike Soundstage



Enhanced Transient Response and Clarity



A SHOWCASE RENDERING
NOT REFLECTING ACTUAL STRUCTURE

02

Specification

Skyanalog REF

PHYSICAL		ELECTRICAL	
CANTILEVER	SAPPHIRE	OUTPUT VOLTAGE	0.35mV
STYLUS	MICRO-RIDGE	IMPEDANCE	50OHMS
STYLUS RADIUS	r/R=3/80μM	FREQUENCY RESPONSE	20-30KHz
VTA	20°	CHANNEL SEPARATION	35dB+
COIL	SQUARE 6N OCC	CHANNEL BALANCE	~0.5dB
WEIGHT	10GRAMS		

DYNAMIC

TRACKING ABILITY @315Hz	80μM
DYNAMIC COMPLIANCE	15μM/mN

SETUP

RECOMMENDED LOADING	100-330 OHMS
TRACKING FORCE	1.0-1.6GRAMS
TONEARM MASS	MEDIUM
OPTIMAL TEMP	23 °C
BREAK-IN PERIOD	30HOURS

ALL RIGHTS RESERVED BY SKYANALOG.

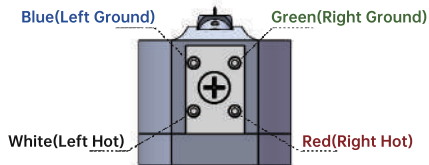
WE HOLD THE RIGHTS TO CHANGE THE SPECIFICATIONS WITHOUT NOTIFYING CUSTOMERS.

03

Installation

A meticulous procedure demanding patient

Connect the lead wires to the pins as defined below with color codings. **Note: Never solder the terminal pins as it may damage the internal coil windings.**



Now, remove the stylus protector and mount the cartridge in the headshell with the supplied screws. Next, adjust the Vertical Tracking Force(VTF) to **~1.3grams**. At this stage, cartridge alignment is required. We recommend using commercially available protractors, templates and tools(not supplied) to ensure the pickup components and the tonearm are properly aligned for optimal tracking.

Try experimenting with different VTF and corresponding VTA and Anti-Skating to find the optimal tracking statistics in your environment. A meticulous setup will be rewarded with better sound performance.

04

Warranty

The cartridge is warranted for a period of TWO YEAR from the date of purchase against electrical and mechanical defects provided the instructions have been adhere to. The warranty does not cover stylus wear or any damage to the stylus assembly resulting from improper use or abuse. The guarantee will be void if the cartridge is damaged due to human error, accident, or modification. The warranty is limited to the region of purchase. Our dealers and distributors are only contractually obligated to service products sold through them and may charge a non-refundable inspection or courier fee if necessary.

Stylus Cleaning

With prolonged use, the stylus can collect dust and other contaminants from vinyl records. This buildup can affect sound quality and even damage the stylus assembly. When cleaning the stylus, use a soft brush and clean from back to front to avoid damage.

Be cautious when using commercial cleaning solutions, as they may be harmful to the stylus and its adhesive. No alcoholic ingredients are allowed.

Skyanalog

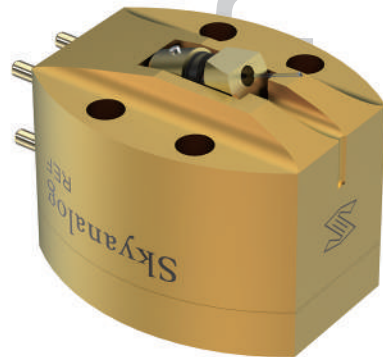
Designed and Manufactured in P.R.C.
www.skyanalog.com
All Rights Reserved By Skyanalog

05

User Manual

REF

Moving Coil
Phono Cartridge
by Skyanalog



USER

MANUAL